



At the heart of the image

DIGITAL CAMERA
COOLPIX
S9

6.1 Megapixels

3x Zoom

2.5-inch LCD



www.nikoncoolpix.info



Stay ahead of the curve.



Nikon presents the COOLPIX S9 – a camera in sync with your sense of style and your passion for self-expression. A joy to own and a pleasure to use, its distinct wave-surface design catches the eye as you capture the moment, while the precision 3x Zoom-Nikkor ED lens and an ample 6.1 megapixels deliver true-to-life color with crystal-sharp clarity. Making it even easier to achieve truly satisfying

6.1
Megapixels

3x
Zoom

2.5
-inch LCD

sharpness and excellent exposure, it offers instant access to three unique Nikon technologies at the mere touch of a button. And as it features the advantage of a generous 2.5-inch LCD, the COOLPIX S9 amplifies the ease of composition and transforms the enjoyment of playback.

Stay ahead of the curve in quality, function and sheer attraction – set your sights on the COOLPIX S9.



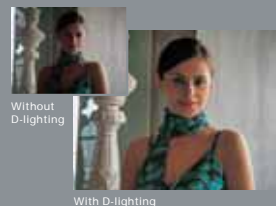
Quality a touch above

With the One-touch portrait button, it's easier than ever before to get great-looking results. Your shortcut to three unique innovations, it offers instant access to Face-priority AF and In-Camera Red-Eye Fix for optimized image capture and lets you transform exposure after the fact with Nikon's powerful D-Lighting advantage.



D-Lighting

Improve underexposed images or shots taken with too much backlight. Nikon's unique D-Lighting function automatically creates a copy with added detail wherever necessary and well-exposed areas left precisely as they are.



Face-priority AF

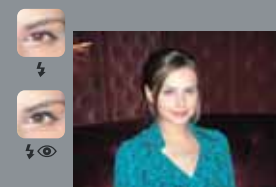
Take satisfyingly sharp portraits, no matter where the subject is in the shot. Face-priority AF* automatically finds, then focuses on people's faces, enabling you to achieve crisp, clear results time after time.

* Face recognition capability may be limited in some shooting conditions.



In-Camera Red-Eye Fix

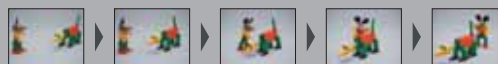
Avoid the annoying red-eye effect sometimes caused by flash. In-Camera Red-Eye Fix automatically detects red eyes in the picture, then cleverly compensates for them in-camera for more flattering, more natural results.



Note: Images shown above are for representation purposes only.

Stop-motion movie

Create your very own animated films! Just take a shot of your models, move them, then shoot again – with the new Stop-motion movie function producing smooth, professional-looking movies.



PictureProject

PictureProject adds value to the entire photographic experience. Supplied with each and every COOLPIX camera, this unique, user-friendly software simplifies picture editing and makes it easy to organize and share images, while a range of available plug-ins let you expand possibilities on demand.



Nikon Digital Camera COOLPIX S9 Specifications

Effective pixels:	6.1 million
CCD:	1/2.5-inch type (approx. 6.36 million total pixels)
Image modes:	High (2816*), Normal (2816), Normal (2048), PC (1024), TV (640)
Lens:	3x Zoom-Nikkor ED; 6.4-19.2mm (35mm [135] format equivalent to approx. 38-114mm); f/3.5-4.3; 13 elements in 10 groups; Digital zoom: up to 4x
Focus range (approx.):	25cm (0.8 ft.) to infinity (∞), 4cm (1.6 in.) to infinity (∞) in Macro mode
LCD monitor:	2.5-inch type, 153,600-dot TFT LCD monitor with brightness adjustment
Storage media:	SD memory card and internal memory (approx. 24MB)
Shooting modes:	Auto, 4 modes with Scene assist (Portrait, Landscape, Sports, Night Portrait), 11 Scene modes (Party/Indoor, Beach/Snow, Sunset, Dusk/Dawn, Night Landscape, Close Up, Museum, Fireworks Show, Copy, Back Light, Panorama assist), Voice Recording, BSS (Best Shot Selector), Exposure BSS, Color Options, Blur Warning, Date Imprint, Self-timer (10 sec.)
Movie:	With sound: TV movie (640) at 30fps, Small size (320) at 30fps, Smaller size (160) at 30fps; Without sound: Time-lapse movie at 30fps, Stop-motion movie at specified speed available
Capture modes:	1) Single, 2) Continuous (approx. 1.7fps), 3) Multi-shot 16 (approx. 2.1fps, only available at image size 6M), 4) Interval timer shooting
Number of frames (w/ Internal memory):	6M: High (2816*) approx. 9, Normal (2816) approx. 18, 3M: Normal (2048) approx. 32
Built-in flash:	Range: approx. 0.25-3.2m/ 10 in. – 10.5 ft. (W), approx. 0.45-2.6m/ 1.47 ft. – 8.5 ft. (T); Flash modes: Auto, Auto with Red-eye Reduction (In-Camera Red-Eye Fix), Flash Cancel, Anytime Flash and Slow sync.
Interface:	USB, Audio Video output
Supported languages:	Total of 20 languages: German/English/Spanish/French/Italian/Dutch/Russian/Swedish/Japanese/Simplified Chinese/Traditional Chinese/Korean/Thai/Portuguese/Polish/Indonesian/Finnish/Danish/Norwegian/Czech selectable in menu display
Power requirements:	Rechargeable Li-ion Battery EN-EL8 (supplied)
Battery life (approx.):	190 shots with EN-EL8 (based on CIPA standard)
Dimensions (WxHxD):	Approx. 90.5 x 58.0 x 20.4mm (3.5 x 2.2 x 0.8 in.) excluding projections
Weight (approx.):	115g (4 oz.) without battery and SD memory card
Supplied accessories:	Rechargeable Li-ion Battery EN-EL8, Battery Charger MH-62, USB Cable UC-E6, Audio Video Cable EG-CP14, Strap, PictureProject CD-ROM

* Supplied accessories may differ by country or area.

PictureProject System Requirements

OS	Macintosh: Mac OS X version 10.3.9 or later Windows: Windows® XP Home Edition/Professional, Windows® 2000 Professional pre-installed models
Note	CD-ROM drive required for installation. Only built-in USB ports are supported.

Microsoft® and Windows® are either registered trademarks or trademarks of Microsoft Corporation in the United States and/or other countries. Macintosh® and QuickTime® are either registered trademarks or trademarks of Apple Computer Inc. in the United States and/or other countries. The FotoNation logo is a trademark. The SD logo is a trademark. PictBridge is a trademark. D-Lighting technology is provided by Apical Limited. Face-priority AF technology is provided by Identix®. Pictmotion contains patented technologies provided by muvee Technologies Pte. Ltd. Products and brand names are trademarks or registered trademarks of their respective companies. Images on LCDs and monitors shown in this brochure are simulated.

Specifications and equipment are subject to change without any notice or obligation on the part of the manufacturer.
August 2006 ©2006 NIKON CORPORATION



WARNING TO ENSURE CORRECT USAGE, READ MANUALS CAREFULLY BEFORE USING YOUR EQUIPMENT. SOME DOCUMENTATION IS SUPPLIED ON CD-ROM ONLY.

Nikon U.K. Ltd
380 Richmond Road, Kingston,
Surrey KT2 5PR, U.K.
www.nikon.co.uk, www.europe-nikon.com

Foto Distributors
516 Kyalami Boulevard, Kyalami Business Park,
Midrand, 1684 Johannesburg, South Africa
www.nikonsa.co.za, www.europe-nikon.com



NIKON CORPORATION

Fuji Bldg., 2-3, Marunouchi 3-chome, Chiyoda-ku,
Tokyo 100-8331, Japan

<http://nikonimaging.com/>