

Pioneer *sound.vision.soul*

Home Entertainment Guide 2004-2005



HDD
HARD DISK DRIVE

DVD
VIDEO/R/RW



PLASMA TV

Make your own creations and those of others come alive on your own EISA award-winning multimedia canvas. You'll never tire of admiring its stunning design and vibrant life-like images, in up to 7 billion colours.

Enter a World of Innovation



DVD RECORDERS

You need never miss a programme again. Pioneer's DVD recorders make it easier than ever for you to record, edit and copy discs. Treat yourself to one of the Hard Disk Drive (HDD) models to enjoy hours of entertainment.

COMPUTER HARDWARE

At the pinnacle of computer hardware manufacturing, Pioneer presents you with top-notch DVD-R/DVD-RW writers and DVD-ROM drives — for truly outstanding quality that simply shines through.



Pioneer *sound.vision.soul*



HOME CINEMA SYSTEMS AND COMPONENTS

A whole new breed of home cinema system is waiting for you. You'll adore the slender form and the wealth of entertainment you can enjoy. Save on space but not surround sound with innovative speaker solutions. The revolutionary all-in-one HDD Home Cinema System with built-in DVD recorder will totally transform the way you experience home entertainment.

Take a deep breath, and enter a dazzling world of entertainment, in every conceivable form. Pioneer's innovative entertainment solutions are internationally renowned for their superior quality. A reputation made possible by Pioneer's dedication to technological advancement and ground-breaking product design — all of which is inspired by you! So it comes as no surprise that Pioneer is at the forefront of entertainment in every arena. Give yourself the gift you deserve. Choose Pioneer, and dive into a breathtaking world of entertainment.

You'll never look back.

www.pioneer.co.uk

IN-CAR MULTIMEDIA

At the forefront of in-car multimedia and navigation, Pioneer stands for entertainment, convenience and peace of mind on the open road. The EISA award-winning AVIC-X1 features all these qualities in one brilliant product. You get full navigation while passengers enjoy a DVD movie on the move.



DJ PRODUCTS

The world's leading DJs choose Pioneer for the smoothest mixes that electrify the audience. Pioneer's dynamic new mixing powerhouse, the DVJ-X1, combines a DJ's treatment of audio with the visual skills of a VJ so you can create a rave to bring the house down.

The Ideal Entertainment Experience



Open your mind, heart and home to a radical new form of home entertainment: Pioneer. Dazzle your eyes and ears with the purest of images and most sonorous of sounds. Created with you in mind, designs are subtly chic and delightfully stylish. Marvel at the graceful lines and sleek finish of PURE Vision Plasma TVs. Cram packed with futuristic technologies and multimedia features, you'll wonder how you ever lived without one. Glide smoothly into a new world of digital recording with the latest DVD recorders. Enjoy hours of superior picture quality with one of the new Hard Disk Drive (HDD) models. So easy to use, they'll transform the way you record forever. For the ultimate in convenience and panache opt for Pioneer's revolutionary all-in-one HDD DVD recorder home cinema system. Like other Digital Home Cinema Systems, it features a unique space-saving speaker solution. There's certainly one to fit



your home and match your taste. Revel in greater video and audio pleasure with top-performing DVD players, A/V amplifiers and receivers and home cinema speakers. From subtle harmony to booming bass, audio systems and components don't get any better either. It's time to expand your horizons. Let Pioneer turn your dreams into reality.



PURE VISION PLASMA TV

6



DVD RECORDERS

18



DIGITAL HOME CINEMA SYSTEMS & COMBINATIONS

28



DVD PLAYERS

38



A/V AMPLIFIERS & RECEIVERS

46



HOME CINEMA SPEAKERS

60



AUDIO COMPONENTS

72



AUDIO SYSTEMS

79

GLOSSARY

80

FEATURES & SPECIFICATIONS

82





With a Pioneer PURE Vision Plasma TV, you'll know what true beauty really means. Its stunningly sleek lines and high gloss black frame are more than simply glamorous. Powered on, vibrant, lifelike images adorn the screen in the sharpest detail. PURE Vision Plasma TV brings more than just a dash of colour into your home, it brings 7 billion. The new digital tuner means you can enjoy everything digital terrestrial TV has to offer and more too. Connect a digital TV receiver, DVD recorder or player, home cinema system, or even a camcorder, games console or computer... and delight family and friends with a whole new world of multimedia entertainment. All in brilliant colour and with the highest possible sound quality. With Pioneer PURE Vision Plasma TV, you're ready for whatever the future may bring.

8 PURE VISION PLASMA TV

PDP-505XDE/PDP-435XDE PURE Vision Plasma TV

NEW



PDP-505XDE shown with optional under-mounted speakers (PDP-S21-LR) and table top stand (PDK-TS05)

Plasma Display Panel

- Ultra-thin (only 9.3 cm)
- Pure, clean design — for a timeless look
- Benefit from the most superb picture quality available — this Plasma TV is ready for High Definition TV
- Enjoy super-bright, superior image quality thanks to Pioneer's advanced technology (PURE DRIVE)
- Wall-mount your Plasma TV with the handy mounting bracket, or opt for a tabletop stand or a floor stand
- Opt for short speakers, whether side- or under-mounted, or choose black acoustic swing speakers

Media Receiver

- Enjoy up to 30 FREE digital TV channels and over 20 FREE digital radio stations, with the built-in FREEVIEW* tuner
- This media receiver features an analogue tuner as well
- Select the digital programme you want, with the on-screen TV guide for digital television (Digital EPG)
- Stylish cosmetic design, with silver-finish front top and bonnet, half-mirror front door, and aluminium remote control
- Enjoy your own personal, high-resolution digital images via Home Gallery (JPEG Picture Viewer)
- Watch two sources at the same time (Dual Screen, Picture-in-Picture)
- NextView EPG - your on-screen TV programme guide
- Enjoy a remote control shortcut to your favourite channels (Favourite Channel Selection)
- Easily connect your PC to your Plasma TV (PC Input)
- Benefit from the 2,100-page Teletext memory
- Experience direct high-definition digital audio/video transmission, without quality loss (HDMI)
- Connect your external A/V components easily via 3 EURO-Scart input terminals

*To check you are in a FREEVIEW coverage area, either:
1. Text your postcode to 83331 (standard rates apply), or
2. Call FREEVIEW on 08708 80 99 80)



For more details on features and technology, please visit www.pioneer.co.uk

PDP-505HDE/PDP-435HDE

PURE Vision Plasma TV

NEW



PDP-435HDE shown with optional side speakers (PDP-S22-LR) and floor stand (PDK-FS03)

Plasma Display Panel

- The PDP-505HDE and PDP-435HDE displays offer the same top-class features as their counterparts, the PDP-505XDE and PDP-435XDE

Media Receiver

- Enjoy your own personal, high-resolution digital images via Home Gallery (JPEG Picture Viewer)
- Watch two sources at the same time (Dual Screen, Picture-in-Picture)
- NextView EPG - your on-screen TV programme guide
- Easily connect your PC to your Plasma TV (PC Input)
- This media receiver features an analogue tuner
- Stylish cosmetic design, with silver-finish front top and bonnet, half-mirror front door, and aluminium remote control
- Enjoy a remote control shortcut to your favourite channels (Favourite Channel Selection)
- Benefit from the 2,100-page Teletext memory
- Experience direct high-definition digital audio/video transmission without quality loss (HDMI)
- Connect your external A/V components easily via 3 EURO-Scart input terminals



10 PURE VISION PLASMA TV

PDP-435FDE PURE Vision Plasma TV

NEW



PDP-435FDE shown with optional side speakers (PDP-S22-LR) and table top stand (PDK-TS05)

Plasma Display Panel

- Ultra-thin (only 9.3 cm)
- Pure, clean design — for a timeless look
- Benefit from the most superb picture quality available — this Plasma TV is ready for High Definition TV
- Enjoy super-bright, superior image quality thanks to Pioneer's advanced technology (PURE DRIVE)
- Wall-mount your Plasma TV with the handy mounting bracket, or opt for a tabletop stand or a floor stand
- Opt for short speakers, whether side- or under-mounted, or choose black acoustic swing speakers

Media Receiver

- Stylish cosmetic design, with black front top and bonnet, half-mirror front door, and aluminium remote control
- This media receiver features an analogue tuner
- Enjoy a remote control shortcut to your favourite channels (Favourite Channel Selection)
- Benefit from the 2,100-page Teletext memory
- Experience direct high-definition digital audio/video transmission without quality loss (HDMI)
- Connect your external A/V components easily via 3 Euro-Scart input terminals

PURE DESIGN (All models)



It is impossible to tire of the extraordinary beauty of Pioneer's PURE Vision Plasma TVs. Their high gloss black frame, with attractive matte aluminium finish, delightfully complements any interior. Thanks to the improved film-type Direct Colour Filter, Pioneer's new Plasma TVs are only 9.3 cm deep. Created from high-quality, exclusive materials, they boast a sleeker and smoother appearance and blend in discreetly when hung on the wall. They can also be displayed using the optional tabletop stand or designer floor stand. Pioneer's PURE Vision Plasma TVs are available in three impressive sizes, a 61-inch/155 cm, 50-inch/127 cm or 43-inch/109 cm. The optional speakers are huge on looks and performance and can be either side or under mounted.

The latest media receivers have been designed to be as strikingly attractive as the Plasma panel itself. The new design remote control adds a further touch of elegance — for the PDP-505XDE/PDP-505HDE and PDP-435XDE/PDP-435HDE, it's in stylish aluminium. With five combinations of Pioneer PURE Vision Plasma TVs to choose from, there is certainly something for everyone.



PDP-615EX PURE Vision Plasma Display**NEW**

PDP-615EX shown with optional table top stand (PDK-1014)

Plasma Display Panel

- Experience direct high-definition digital audio/video transmission without quality loss (HDMI)
- Calibrate a customised level of contrast, tint and other parameters, for the most accurate image possible (ISF C3)
- Adjust the tone of the white colour, according to your preference (Colour Temperature Setting Modes)
- See picture reproduction of the highest level, thanks to the complete eradication of picture noise (Noise Reduction)
- Pure, clean design — for a timeless look
- Display your Plasma TV with the handy tabletop stand PDK-1014 (W: 1,000 mm, H: 216.7 mm, D: 470 mm) or choose for the wall mount bracket PDK-WM03 (W: 950 mm, H: 591mm, D: 45 mm)

HDMI™ HDMI (HIGH DEFINITION MULTIMEDIA INTERFACE)

Connect your Plasma TV to external components for the best digital-to-digital transfer imaginable. High-definition digital transmission from any audio or video source losing none of the quality of sound or image — and all through a single HDMI cable. Experience image and sound as they were meant to be. No more nests of confusing cables; one HDMI cable lets you enjoy the highest unfaltering uncompressed digital video and audio quality from original sources such as DVD discs or HD (High Definition) video signals.

CUSTOMIZE YOUR CALIBRATION — PROFESSIONALLY

Now you can have the most accurate image possible. The ISF C³ (Custom Calibration Configuration) feature allows you to optimize your plasma TV for the specific environment it was placed in. Via an optional service, you can rely on an ISF professional to calibrate a customized level of contrast, tint, colour level and other parameters for you, so that you can enjoy a precision image.

NOISE REDUCTION FOR THE PERFECT IMAGE

See picture reproduction of a level never before experienced on a plasma screen, thanks to the complete eradication of picture noise. Thanks to cutting edge noise reduction technology, this top-quality Plasma TV faithfully reproduces the highest standard in superior quality images.

FOUR PRESET MODES FOR COLOUR TEMPERATURE

Colour temperature settings adjust the tone of white colour, which provides depth and shadow to the images on your screen. If your entertainment area has fluorescent lighting, a high colour temperature setting would be required. In a less harsh light, you'll want to adjust the colour temperature to a lower level to provide a depth and detail of a more neutral kind. Now you can easily adjust the tone of the white colour on your screen, according to your preference, by simply using four preset modes, or the additional professional mode for advanced adjustments.

12 PURE VISION PLASMA TV

ONE DISPLAY, A WORLD OF POSSIBILITY

Open your world to the world of Plasma. Much more than just a television, the Pioneer PURE Vision Plasma TV will blend beautifully into every room in your home, offering a whole new world of infinite possibility. From surfing the Net to the ultimate in home cinema, images will be more vivid, more eye-catching and more brilliant than you have ever seen before. You'll never want to leave your house again.



BRING THE CINEMA INTO YOUR HOME

You don't need an enormous living room to enjoy a cinematic atmosphere. The Pioneer PURE Vision Plasma TV provides your own incredible movie screen. Connected to an RCS-9H Digital Home Cinema System, the Pioneer PURE Vision Plasma TV will allow you to enjoy your favourite films in super-fine image on the wide screen. The chic design of the TV is mirrored in the stylish looks of the Home Cinema Systems, much sleeker than having a genuine movie projector at home. With multi-channel surround sound, it'll be just like being at the movies, only better; you'll always have the best seats in the house.



CREATE THE WORK OF ART YOU WANT

To make your own movies and pictures come alive, simply hook up your digital (video) camera or DVD recorder to the Pioneer Plasma TV and relive those special moments in larger-than-life, brilliant colour. PURE Vision also works with a wide variety of memory card formats, always offering spectacular images. And by adding the 'Home Gallery Collection' software, a Pioneer collection of digitised masterpieces, you can even have a Van Gogh in your home.

If you don't want to craft your own artwork, you can simply delight in that of others. Pioneer Plasma TV provides the perfect canvas to enjoy high definition images and text offered through digital terrestrial, satellite and cable broadcasts. You can even browse Teletext on the big screen.



WWW

TURNING WORK INTO PLEASURE

The Pioneer PURE Vision Plasma TV can be your ultimate office accessory. It is the perfect canvas on which to enjoy high definition images and text, either of your own PC or Mac creation or offered through the Internet. With a Pioneer Plasma TV for the home — with real XGA resolution — you will enjoy the clearest images that are friendly to your eyes. Work will never be a chore again.



SUPER ACTION ON A SUPER SCREEN

Whether you're fighting aliens or testing cars on a race circuit, the Pioneer Plasma TV will bring your games to life, making them more spectacular and more exciting than ever before. Connected to a games console, the Plasma TV provides wide-screen, high definition, high-quality moving images so you'll never miss a move. Combined with the spine-tingling effects of multi-channel sound, all that will be missing is the wind in your hair.



AT HOME ANYWHERE IN YOUR HOME

Pioneer Plasma TV is versatile and stylish; it fits into every room in your home. Keep your home safe and secure by connecting an outdoor camera. Then you can check who's at the door and still watch TV or surf the Net, using the Picture-in-Picture function. Or, if you decide to follow the chef's suggestion whilst watching a cookery programme, you can call up the recipe on the Internet or via Teletext and display it on another section of the Plasma screen, thanks to the Dual-Screen option. With brilliant colours and vivid images, your mouth will be watering even before you've had a chance to put on your apron.



For more details on features and technology, please visit www.pioneer.co.uk

TUNER FEATURES

DIGITAL TERRESTRIAL COMPATIBLE* (PDP-505XDE, PDP-435XDE)

The Pioneer Digital Multimedia Receiver PDP-R05XE (which accompanies the PDP-505XDE and PDP-435XDE) allows access to free-to-view digital terrestrial TV** and digital radio stations***, today and in the future. That means you can enjoy a wide range of entertainment, music, news and special interest programmes, and all with the highest possible sound quality. You can connect to all available free-to-air channels and enjoy other advanced features too. The Digital Multimedia Receiver even supports Dolby Digital broadcasting (where available).

The Digital Multimedia Receiver is fast to install and it responds immediately to commands — change of programme channel or delivery of programme information and Teletext pages happen instantaneously. Pioneer's Digital Multimedia Receiver welcomes you to the future.

* The level of compatibility with digital terrestrial services and the number of available digital terrestrial channels depends on the user's country of residence.

** By using the Conditional Access Module, you can access pay-to-view channels as well.

*** All channels are subject to coverage and may change from time to time. Reception may depend on the type and condition of the existing aerial. Aerial upgrade may be required.

NEXTVIEW EPG, NEXT GENERATION VIEWING TODAY (PDP-505XDE, PDP-435XDE, PDP-505HDE, PDP-435HDE)

With the Pioneer Plasma TV's Multimedia Receiver (included) you can take full advantage of the NexTV EPG service provided by Analog terrestrial broadcast*. Plan your watching week by browsing through the 7-day advance on-screen programme listing. Decide what to view live and what to record with the REC timer**. And never miss your favourite show again. Theme and programme filters allow you to create a more personalised programme list and alert you to the possibilities of other on-screen services.

* Available in Austria, Belgium, France, Germany, Italy and Switzerland.

** In combination with NexTV EPG-compliant recording devices.

PURE DISPLAY

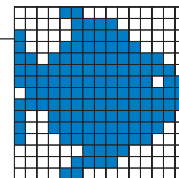


■ PIONEER PLASMA — READY FOR HIGH DEFINITION BROADCASTING

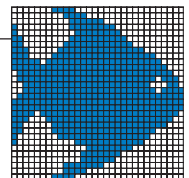
Pioneer Plasma TVs comprise more than double the number of cells on their XGA panel than conventional VGA screens. It is the perfect fit for high intensity digital formats, like high-definition TV, Blu-Ray discs, and High Definition DVD-ROM. You will experience superior sharpness and definition, making display of computer signals (both MAC and PC) much more accurate than with other Plasmas. Euro1080*, who introduced Europe's first HDTV channel, HD1, shows high definition technology in living colour, with remarkably sharper, richer and more vibrant images — 5 times more picture information compared with standard PAL broadcasting. Furthermore, there's fantastic sound and no analogue interference whatsoever. Viewers can enjoy a wide selection of programmes (music, sports, shows) on HD1.

* For more information on Euro1080, visit the website at www.euro1080.tv.

Note: Pioneer plasma display panels are manufactured using a high level of ultra-precision technology. Nevertheless, permanently lit, inactive or overactive pixels may occur. This is a consequence of plasma technology.



VGA Panel



True XGA Panel



■ BEAUTY GETS EVEN BRIGHTER

Imagine a full-on, intense bright colour experience. With Pioneer's innovative and unique Deep Waffle Rib Structure that's exactly what you will get. Plasma cells are encapsulated on all sides so that emitted light cannot leak into neighbouring cells, dispersing their brightness. Images remain at their most intense at all times, offering a level of brightness that has never before been possible.



■ IMPROVED COLOUR REPRODUCTION

Enjoy minimum reflection and maximum colour with Pioneer's Direct Colour Filter, a world-first film-type filter which is attached directly onto the front of the plasma panel. It significantly reduces reflection from outside light as well as reflection from the panel itself, typical of conventional filters. The new filter is also very thin, making the plasma panel super-thin (only 93 mm), with a drastically reduced weight. Contrast in bright environments is improved by reducing unnecessary reflections. Every colour is bold and bright — even in broad daylight.



Conventional Plasma



Pioneer Plasma TV with Direct Colour Filter



PURE DRIVE



SUPERB IMAGE QUALITY

Created exclusively by Pioneer, PURE Drive features an advanced digital image processing technology that offers the optimal viewing and listening experience. PURE Drive is completely digital, so it doesn't require numerous analogue-to-digital and digital-to-analogue conversions, which cause undesirable noise. It manages high definition imagery extremely efficiently, noticeably increasing video quality

from sources like normal video signals — the future broadcasting standard — to PC signals and compressed formats, such as MPEG. Once you've experienced PURE Drive, you won't want anything else.

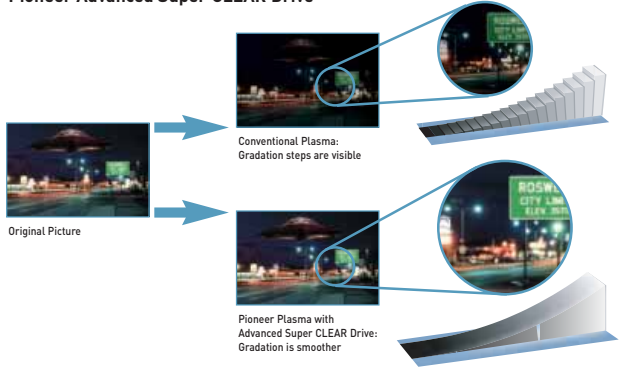


Advanced Super CLEAR Drive — UP TO SEVEN BILLION COLOURS

Pioneer's Super CLEAR* Drive technology has been improved and relaunched as Advanced Super CLEAR* Drive. Now with a grey scale equivalent of up to 1,920 steps per each colour of RGB, today's Pioneer Plasma TVs can boast reproduction of up to 7 billion colours! Advanced Super CLEAR* Drive employs a new drive control method — Dynamic Bright-up Processing — which monitors, controls and boosts brightness on-screen. Superior noise reduction significantly improves the S/N ratio in less bright images. With contrast further intensified, shades of grey are enhanced and blackness can be reproduced perfectly. That means viewers will enjoy brighter and clearer pictures in which every nuance is visible, even in the shadows.

* CLEAR: high-Contrast & Low Energy Address & Reduction of false contour sequence.

Pioneer Advanced Super CLEAR Drive



DUAL NOISE REDUCTION — IMAGES YOU CAN TOUCH

With Dual Noise Reduction technology — Digital and MPEG — picture noise is effectively reduced and minimised, faithfully reproducing the quality of the original image.



Conventional plasma



Pioneer Plasma TV with Digital Noise Reduction



Conventional plasma



Pioneer Plasma TV with MPEG Noise Reduction

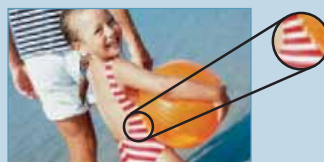
ADVANCED PURE CINEMA — THE FULL CINEMATIC EXPERIENCE

The cinematic experience is more than seeing movies on the big screen; it's the quality of the images that leap out of the screen that leave you mesmerised. With Advanced Pure Cinema technology, you will be awed by that exact same top quality imagery on your Plasma TV, only you won't have to leave the house.

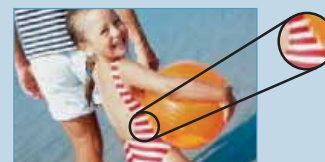


YOUR PERSONAL HIGH DEFINITION CREATOR

Thanks to Pioneer's Dynamic HD Conversion, images are sharp and clear. Optimising each and every pixel individually, based on the 84 surrounding pixels, it produces pictures that are more vibrant and smoother than they have ever been before.



Conventional plasma



Pioneer Plasma TV with Dynamic HD Converter



Original Signal



Digital Flicker-Free

DIGITAL FLICKER-FREE — MAKING FLICKERS A THING OF THE PAST

No more tired eyes, thanks to Pioneer's exclusive Digital Flicker-Free technology. It removes any trace of a flicker and every false contour to simply leave the very best in picture quality. A true viewing pleasure. Now you can choose between two frequency rate settings. Advanced is optimal for DVD-Video playback and Standard is best for television broadcasts. Select a rate according to your current viewing situation, and enjoy maximum high-quality images.

PLASMA FEATURES



HOME GALLERY (JPEG PICTURE VIEWER)

(PDP-505XDE, PDP-435XDE, PDP-505HDE, PDP-435HDE)

Reliving your favourite footage or enjoying someone else's work of art has never been so much fun, particularly on the big screen. Pioneer's Home Gallery (JPEG Picture Viewer) allows you to enjoy high resolution images direct from a variety of sources including digital cameras and most memory cards* such as PC Card Type II, Memory Stick, SD Card, CompactFlash, MMC and SmartMedia. Supporting a JPEG resolution of 2,400 x 1,800 (4.3 million) pixels, means you can dazzle family and friends with magnificent shots in exuberant colours. By simply inserting the memory card*, you can easily view your own personal, high resolution digital images or enjoy original digital art images from the optional Pioneer 'Home Gallery Collection' software.

* Via PC Card Type II adaptor (not included).



Memory Stick is a trademark of Sony Corporation. CompactFlash is a trademark of Sandisk Corporation. SmartMedia is a trademark of Toshiba Corp. All other marks are registered or unregistered trademarks of their respective proprietors.

SEE IT YOUR WAY WITH VARIOUS MULTI-SCREEN FUNCTIONS

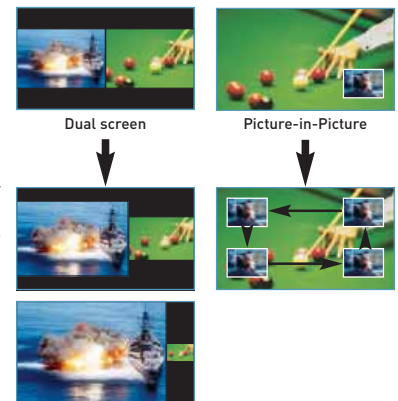
(PDP-505XDE, PDP-435XDE, PDP-505HDE, PDP-435HDE)

With the new multi-screen functions, there are a multitude of possibilities for simultaneously displaying two images on the panel.

By selecting the Dual Screen function, two separate sources can be shown. Any signal format combination is possible: video & video, video & PC, video & HD, PAL & NTSC, SECAM & NTSC, etc. The screen is initially divided equally in two, but you can choose from a selection of picture sizes.

PIP (Picture-in-Picture) allows two separate sources to be displayed — one in the main view and the other in a smaller inset in the screen. Using the dedicated key on the remote control, viewers can rotate the mini inset screen.

For both the Dual Screen function and the PIP function, a dedicated key on the remote control allows the main and sub images to be immediately switched. For the PIP function, this implies that the main image is displayed in the inset and vice versa. With two images available, you can, for example, also keep an eye on an outdoor security camera whilst enjoying a movie, or surf the Internet for a recipe whilst cooking along with a celebrity chef.



HDMI™ HDMI (HIGH DEFINITION MULTIMEDIA INTERFACE)

Imagine the ultimate digital-to-digital transfer; high definition digital transmission from any audio video source losing none of the quality of sound or image — and all through a single HDMI cable. No more nests of confusing cables; one HDMI cable lets you enjoy the highest unflinching uncompressed digital video and audio quality from their original source, such as DVD discs or HD (High Definition) video signals. Colours and sound effects as they were meant to be enjoyed.

TONS MORE TELETEXT

The PURE Vision Plasma TV's Teletext decoder has an impressive page memory of up to 2,100 pages. And you don't have to miss the action on TV whilst looking something up. Simply use the split-screen capability.

i/o Link A

Integrating audio visual equipment with your Plasma TV has never been easier or more secure. i/o Link A connects the Multimedia Receiver simply to any other A/V device. It offers a host of useful control functions including One-Touch Play, System Standby, Preset Download and WYS/WYR (What You See is What You Record).



A JOY TO YOUR EARS AS WELL AS YOUR EYES

Enjoy a truly mesmerising listening experience, thanks to three forms of audio enhancement technology. Be wowed by the dramatically improved dynamics, image field size and bass tones offered by WOW*. Go lower than ever before with TruBass*, that takes the lower bass tone far beyond the natural capabilities of the speakers. Go higher too. FOCUS* brings the front sound field higher than the speaker itself, producing magnificent sound. And all this from beautifully designed, slim hi-fi speakers, which despite their size, offer full-range reproduction with a total power output of 26 watts.

* SRS WOW, SRS, SRS FOCUS, SRS TruBass and the (•) symbol are trademarks of SRS Labs, Inc.

FAVOURITE CHANNEL SELECTION

Now you can access your favourite and most frequently-watched channels more easily. After storing them in memory, simply press "ENTER" on your remote control to display them in an on-screen favourite channel list and use the cursor buttons to navigate to the channel of your choice.



GUI with 'Home Menu'

EASY-TO-USE GUI (GRAPHICAL USER INTERFACE)

No more fiddling about with complex control panels. Pioneer's GUI with 'Home Menu' integrates all Pioneer audio and video equipment, so you can control what you want to watch or listen to at the touch of a button. The clear and attractive graphics bring a whole new meaning to the phrase 'easy-to-use'.

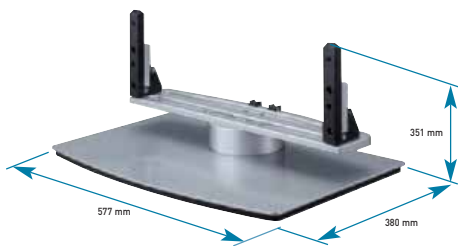
PC INPUT

Thanks to the PC Input terminal on the front of the Multimedia Receiver, it is very easy to connect a PC to the Plasma TV. Now you can play your favourite PC games, work at home, or even enjoy the Internet, on a high-quality large screen, without any complicated set-up procedures.

Note: Not available on the PDP-435FDE.

16 PURE VISION PLASMA TV

PDK-TS05 Table Top Stand



Alternative table top stand: PDK-TS08
(for more information about this product, please visit www.pioneer-eur.com)

PDK-FS03 Floor Stand



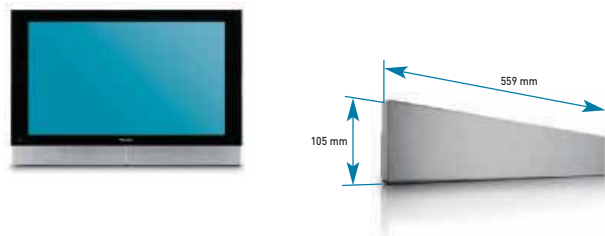
PDP-S21-LR Optional Short Speakers for 50-inch models

Note: Depth short speakers: 70 mm.



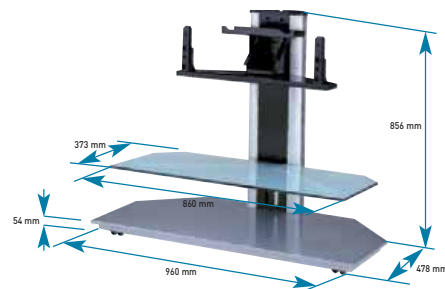
PDP-S22-LR Optional Short Speakers for 43-inch models

Note: Depth short speakers: 70 mm.



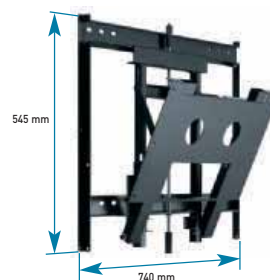
PDP-S25-LR Optional black Acoustic Swing Speakers for 50-inch models

PDK-FS04 Floor Stand

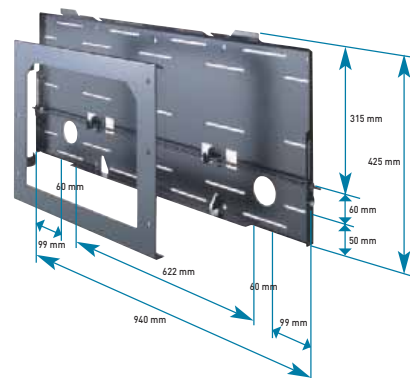


PDK-5011* Angled Wall Bracket

* In combination with side-mounted speakers only.
Note: Depth bracket when not angled: 45 mm.



PDK-WM01 Wall Bracket



PDA-H03 Conventional Long System Cable (10 m)

PDA-H04 Optical Long System Cable (30 m) with Detachable Plugs

PDP-S26-LR Optional black Acoustic Swing Speakers for 43-inch models

- 'Acoustic Swing' type: mounting bracket allows viewers to tilt speakers to right or left (4 tilted positions) to suit their listening position
- Click speakers into place against the panel (5th position — straight)

- Jersey net finish matches panel design
- Long speakers with same height as panel
- Dimensions (W x H x D):
 - PDP-S25-LR: 95 x 737 x 62 mm
 - PDP-S26-LR: 95 x 652 x 62 mm



For more details on features and technology, please visit www.pioneer.co.uk

PDSP-1 Digital Sound Projector



- Change the way you listen to sound, with this revolutionary lifestyle-conscious Digital Sound Projector
- Replace the loudspeaker clutter in your living room with one sleek panel and complement your taste in sound as well as your interior
- Allow yourself to be embraced by a three-dimensional soundfield, created by 254 individual speaker units
- Be in the centre of the action when playing DVD-Videos
- Preset the sound settings to fit your needs at different times

Pioneer partnered with 1Ltd. to develop the PDSP-1.



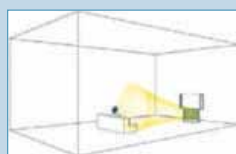
ONE SOLE PANEL, YET INNOVATIVE ALL-ENCOMPASSING SURROUND SOUND

Just one panel gives you exceptional true surround sound. With no narrowly fixed listening position, the PDSP-1 produces a three-dimensional surround filling your entire living space. Sound beams are reflected off the walls, ceiling or any other surface. They are created by 254 individual transducers, embedded within the sound panel, each of which is driven by a separate compact digital amplifier. Hook up the digital audio output of your DVD-Video player and indulge in an all-digital surround sound experience.

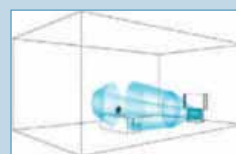
The sound beams can be altered to reflect the acoustics and the number of people in the room, to offer the optimal audio effect at all times. For the ultimate surround sound experience from DVD-Videos, the PDSP-1 includes built-in multi-channel digital decoding for Dolby Digital and DTS. Two-channel sources (from stereo TV receivers, for example) can also be processed for Dolby Pro Logic II surround sound reproduction.



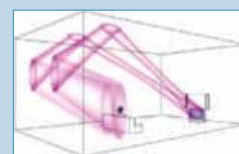
5 Sound beams that make 5.1 Ch Surround come alive



Centre Channel



Front Left & Right Channel



Rear Left & Right Channel



PDSP-1 mounted on the wall in combination with Pioneer Plasma TV.



PDSP-1 and Pioneer Plasma TV mounted on a custom-made stand.



PDSP-1: THE ULTIMATE SURROUND SOUND SYSTEM FOR PIONEER PURE VISION PLASMA TV

For a breathtaking, truly realistic wireless home theatre, combine Pioneer PURE Vision Plasma TV with the Pioneer Digital Sound Projector. Only a radical approach to speaker technology could create surround sound so impactful yet so aesthetic. You've never heard — or seen — anything like it before.





Step into the future of home recording with a Pioneer DVD recorder. Enjoy superb images time after time. Access your favourite scenes with just the touch of a button. Opt for a DVD recorder with built-in Hard Disk Drive (HDD) and home recording becomes easier still. Record hours of programmes onto the HDD and then fast-copy them onto DVD discs for safekeeping. Use the handy Chase Play function to watch programmes from the beginning as they continue to record. You'll save heaps of time. With no more bulky video tapes to store and a choice of stunning slim-line units, you'll save on space too. For unparalleled image quality via an extra special interface, choose Pioneer's top model. Even homemade movies are a dream to manage and view. For the very best in home recording, it's got to be Pioneer.

20 DVD RECORDERS

DVR-920H-S

HDD (Hard Disk Drive) DVD Recorder

NEW

HDMI

HDD

VIDEO

DOLBY

JPEG

MP3

DUAL

PROGRESSIVE

SCAN

PAL/NTSC

SR

RW
COMPATIBLE

250 GB
Hard Disk Drive

HDMI



- Record directly onto the mega-capacity 250 GB Hard Disk Drive, for more than 400 hours¹ of recording (HDD 250 GB)
- View full digital high-quality images thanks to the direct high definition digital multimedia interface (HDMI)
- Copy recorded content up to 55 times² faster than real-time from HDD to DVD-R/DVD-RW, without loss of quality (High-Speed Copy)
- Enjoy a flicker-free, cinematographic viewing experience (Dual PureCinema Progressive Scan)
- Full digital 10-bit precision signal processing (High-quality video recording)
- Get superlative picture quality with enhanced-quality video (108 MHz/14-bit D/A Converter with VQ9)
- Navigate through a multitude of TV-channels and record them at the touch of a button (GUIDE Plus+™ Electronic Programme Guide)
- Gain clear, high-fidelity sound with increased chassis strength (Dual Layered Chassis)
- High-quality design in black acrylic, matching Pioneer's Plasma TV and Multimedia Receiver
- Save precious time with Chase Play — watch a programme from the beginning, while it's being recorded, without interrupting the ongoing recording process
- Find what you want easily and quickly (Advanced Disc Navigator, Disc History)

¹ The number of titles which can be recorded on the Hard Disk Drive is limited to 999, even if there's still more recording time available.

² The actual speed depends on the recording mode and media used. Up to 55x high-speed copy can be reached when content is recorded in SLP mode and copied to 8x DVD-R media.

250 GB HARD DISK DRIVE FOR MORE THAN 400 HOURS OF RECORDING

If you never want to miss any of your favourite TV programmes, Pioneer's top-of-the-line DVR-920H-S HDD DVD Recorder is the perfect solution for you. With an amazing 250 GB built-in Hard Disk Drive (HDD), it has immense storage capacity, on which you can record up to 433 hours of programming. An avid viewer? Now you can record directly onto the Hard Disk Drive for temporary storage and replay. If you want to keep a recording permanently, you can easily archive it onto a DVD-R/DVD-RW disc.

SUPER-FAST HIGH-SPEED COPY (55X) (DVR-920H-S)

Pioneer presents: high-speed copy at superspeed! Pioneer's DVR-920H-S, allows you to copy a programme up to 55 times faster than real time and still retain the same level of quality.* For example, you can copy a one-hour programme from the HDD onto an 8x DVD-R disc (Video Mode) in SLP recording mode, and it will take you only 1.1 minutes. Copy a programme to DVD-RW — whether in 'VR Mode (DVD Video Recording Mode)' or 'Video Mode (DVD Video Mode)', you always have full control over editing. In a hurry? Just push the One Touch Copy button on your remote control and quick as a flash HDD content starts high-speed copying directly to your DVD-R/DVD-RW disc — you can even watch the programme being copied, while it's copying!

In addition, the size of the recording will never be a problem again. If the original recording on HDD is too big, you can easily fit it onto your destination disc by re-encoding the original.

*Recording time varies depending on the mode and destination disc used.

Programme duration ('real time')	Recording Mode used (on HDD)		High-Speed Copy HDD to DVD*	
	Name	Corresponding Max. Rec. time on DVD disc	4x Media	8x Media
1 hour	FINE	1 hour	15 min	8 min.
1 hour	SP	2 hours	7.5 min	4 min
1 hour	LP	4 hours	4 min	2 min
1 hour	EP	6 hours	2.5 min	1.25 min
1 hour	SLP	8 hours	2 min	66 sec

¹ The number of titles which can be recorded on the Hard Disk Drive is limited to 999, even if there's still more recording time available.

² The actual speed depends on the recording mode and media used. Up to 55x high-speed copy can be reached when content is recorded in SLP mode and copied to 8x DVD-R media.

* Approximate copying time. Additional time will be required, e.g. to create management information.

For more details on features and technology, please visit www.pioneer.co.uk

MORE THAN JUST A DVD RECORDER, ALSO A SUPERB DVD PLAYER

HDMI™ HDMI (HIGH DEFINITION MULTIMEDIA INTERFACE)

The DVR-920H-S HDD DVD Recorder incorporates an HDMI interface, allowing High Definition digital content to be transferred directly and securely from an audio/video disc to a TV or Plasma display. As a result, you will enjoy the highest level of uncompressed digital video and superior audio* from original sources, with no loss of quality. Requiring only one cable, HDMI is also very easy to use. Never again will you have to deal with the mess and fuss of complicated or confusing cable connections.

* Digital audio on HDMI compatible with 44.1/48 kHz, 16/20/24-bit, 2-ch/2-ch downmix LPCM or bitstream output (Dolby Digital, DTS and MPEG).

Note: 1) To connect a DVI/HDCP compatible device to the HDMI connector, a conversion cable or adaptor is necessary. Please note that DVI does not feature audio transfer.

2) This unit has been designed to be compliant with HDMI (High Definition Multimedia Interface) version 1.1. Depending on the component you have connected, using a DVI connection may result in unreliable signal transfers.

3) HDMI output featured with this unit can be applied to 576x720 pixel signals output (PAL) and 480x720 pixel signals output (NTSC).

HIGH-QUALITY VIDEO RECORDING

A key innovation in the DVR-920H-S is immediate conversion of incoming video signals from analogue to digital, and subsequent full 10-bit precision signal processing in the digital domain. The analogue-to-digital conversion covers all analogue video input formats, including RGB, guaranteeing the highest possible video quality. For PAL video signals, an advanced Adaptive 5-Line Comb filter realizes optimal Y/C separation with the least possible cross color and dot disturbance. For NTSC sources full-level Motion Adaptive 3D Y/C separation is applied. As part of the digital processing, a Digital TBC (Time Base Corrector) stabilizes the signal and removes jitter often caused by analogue video recording, resulting in high-quality high-precision picture recording. Pioneer's digital "Picture Creation" processing furthermore realizes the best picture quality with regard to all contents, regardless of how these are being acquired. Besides the analogue-based input, the original digital DV input is also processed — for optimum picture quality after transcoding from DV to MPEG.

108 MHz/14-BIT VIDEO D/A CONVERTER

Featuring a built-in, top-of-the-range 108 MHz/14-bit D/A Converter, Pioneer's DVR-920H-S offers picture-perfect images at all times. Normally only found in high-end DVD players, the 108 MHz/14-bit Video DAC boosts image resolution far beyond the limit of traditional data converters. The result? Superior picture quality and very realistic images, as close to the original DVD source as they can be.

TOP-NOTCH EQUIPMENT: DUAL-LAYERED CHASSIS FOR STABLE AUDIO REPRODUCTION

Chassis strength and stability are essential to clear, high fidelity sound. That's why the DVR-920H-S features a dual-layered chassis. Its innovative design absorbs unwanted internal and external vibrations offering stable audio/video reproduction. The thick steel stabilising plate keeps the driving devices steady, eliminating undesirable interference that can be caused by vibrations. An additional attachment point for the DVD writer also prevents vibration and increases stability further. Together, these elements significantly enhance the already superb video and sound reproduction.

PICTURE-PERFECT, WITH VQE9

Pioneer's DVR-920H-S takes technology to new heights with the latest Video Quality Enhancer (VQE9). Building on Pioneer's own VQE8 — incorporated in Pioneer's current flagship DVD player DV-868AVI-S — which offers superb video quality adjustments (using PureCinema Progressive Scan and Component Frame Recursive Digital Noise Reduction), the new VQE9 significantly advances the progressive processing function for all video materials. With even further enhanced jagged noise elimination, you will delight in smoother and more natural looking images. Never have pictures been more perfect.



Original Signal



VQE9 Enhanced Image

DUAL PURECINEMA PROGRESSIVE SCAN FOR PAL/NTSC

Pioneer's DVR-920H-S features not only "Progressive Scan" video output in NTSC (525p) format, but also in PAL (625p) format. That means that you will enjoy stable and flicker-free images from both NTSC and PAL DVD discs, when connected to a NTSC/PAL Progressive Scan-compatible TV or monitor (using the analogue component video or HDMI outputs). Dual PureCinema Progressive Scan restores the original cinema film format images from content recorded on DVD discs. The Dual PureCinema Progressive Scan (PAL/NTSC) feature works by effectively doubling the scanning rate of the picture, resulting in a very stable, flicker-free "cinematographic" viewing experience.



Original Signal



Dual PureCinema
Progressive Scan



GUIDE Plus+™: YOUR ELECTRONIC PROGRAMME GUIDE

Gemstar TV Guide's GUIDE Plus+™ EPG is a user-friendly, electronic programme guide, which allows you to navigate through the current multitude of TV channels, search for programmes by time or category, and record them with the touch of a button. No matter whether you have cable, satellite, Digital Terrestrial or FTA broadcast, GUIDE Plus+™ brings you all the listings and manages to switch your set top box for recordings. You can operate GUIDE Plus+™ while you are watching your current TV programme, so you will never miss anything!



AN EASY CONNECTION FOR MULTI-CHANNEL SURROUND SOUND

The DVR-920H-S's coaxial and optical digital audio out terminal allows easy connection of the DVD recorder to a PCM, Dolby Digital, DTS and/or MPEG compatible A/V receiver (with a coaxial digital input). By connecting the DVD recorder to an A/V receiver using a digital audio output, you can enjoy a complete multi-channel surround sound experience.

22 DVD RECORDERS

DVR-720H-S HDD (Hard Disk Drive) DVD Recorder

NEW

RW
COMPATIBLE

HDD
HARD DISK DRIVE

DVD
VIDEO R/W

dtc
DIGITAL

DOLBY
DIGITAL

JPEG
PhotoViewer

MP3

Windows
Media Center

PAL/NTSC

VIDEOplus+

i

SR

160 GB
Hard Disk Drive

What Video
Widescreen TV
BEST BUY



DVR-520H-S HDD (Hard Disk Drive) DVD Recorder

NEW

RW
COMPATIBLE

HDD
HARD DISK DRIVE

DVD
VIDEO R/W

dtc
DIGITAL

DOLBY
DIGITAL

JPEG
PhotoViewer

MP3

Windows
Media Center

PAL/NTSC

VIDEOplus+

i

SR

80 GB
Hard Disk Drive



DVR-420H-S HDD (Hard Disk Drive) DVD Recorder

NEW

RW
COMPATIBLE

HDD
HARD DISK DRIVE

DVD
VIDEO R/W

dtc
DIGITAL

DOLBY
DIGITAL

JPEG
PhotoViewer

MP3

Windows
Media Center

PAL/NTSC

VIDEOplus+

i

SR

80 GB
Hard Disk Drive



- Record directly onto the giant-capacity 160 GB Hard Disk Drive, for more than 200 hours¹ of recording (DVR-720H-S)
- Record directly onto the large-capacity 80 GB Hard Disk Drive, for more than 100 hours¹ of recording (DVR-520H-S, DVR-420H-S)
- Copy recorded content up to 48 times² faster than real-time from HDD to DVD-R/DVD-RW, without loss of quality (High-Speed Copy)
- Save precious time with Chase Play — watch a programme from the beginning, while it's being recorded, without interrupting the ongoing recording process
- Record onto HDD while high-speed copying from HDD to DVD-R/DVD-RW or record a programme while watching another previous recording (Multi-tasking, Simultaneous Recording & Playback)
- Ultra-slim design (height: only 5.9 cm)
- Find what you want easily, with improved response time and moving thumbnails (Advanced Disc Navigator)
- Enjoy the purity of high-quality video images (recording and playback) under the best circumstances (RGB In/Out via SCART)
- Play back your home-recorded MP3 or WMA music files on CD-R/CD-RW discs, and view your digital still JPEG photographs as well
- Play back your home-recorded DVD-R/DVD-RW discs on a wide range of DVD players
- Connect your digital video camcorder, and experience easy editing with the Graphical User Interface [DV In/Out]³

¹ The number of titles which can be recorded on the Hard Disk Drive is limited to 250, even if there's still more recording time available.

² The actual speed depends on the recording mode and media used. Up to 48x high-speed copy can be reached when content is recorded in EP mode and copied to 8x DVD-R media.

³ Not available on the DVR-420H-S

EASY RECORDING

BUILT-IN HARD DISK DRIVE FOR HOURS OF DIGITAL RECORDING (DVR-920H-S, DVR-720H-S, DVR-520H-S, DVR-420H-S, RCS-9H)

If you're tired of fiddling about with discs to record programmes onto, a Pioneer DVD recorder with a built-in Hard Disk Drive is certainly the solution for you. With a choice of storage capacity from 80 GB upwards, you can record and save directly onto the built-in Hard Disk Drive. No discs, no bother, no fuss. You can then view your temporary recordings straight from the HDD, or erase/replace them with other content. Do you want to keep a favourite programme? Archive it, by copying it in high speed from the HDD onto a DVD-R/DVD-RW disc! It simply couldn't be easier. The HDD is the ultimate solution to your storage and search needs.



DV IN/OUT TERMINAL FOR CAMCORDER CONVENIENCE

(DVR-920H-S, DVR-720H-S, DVR-520H-S, DVR-320-S, RCS-9H)

Connect your digital video camcorder into the DV In/Out terminal and discover how easy it is to view and manage your home movies. From there on, you only need to use your remote control to navigate through functions on both the camcorder and the DVD recorder, using Pioneer's Graphical User Interface. Recording, playing back, fast-forwarding and rewinding has never been this easy. You can copy from your camcorder directly to a DVD-R/DVD-RW disc, or first to your Hard Disk Drive and then, using Pioneer's Copy List function, copy the desired sections of your home movie to a DVD-R/DVD-RW disc. Home-made content can also be restored or uploaded to a digital video camcorder via the DV In/Out terminal.

HIGH-SPEED COPY (48X) (DVR-720H-S, DVR-520H-S, DVR-420H-S, RCS-9H)

High-speed copy just got faster! With these new Pioneer HDD DVD recorders, you can copy a programme up to 48 times faster than it would take you to watch it (depending on the mode and destination disc used), without experiencing any deterioration in quality. For example, copying a one-hour programme from the HDD onto DVD-R (Video Mode) in EP recording mode could take you only 1.25 minutes. You can copy to DVD-RW discs, regardless of whether they are in 'VR Mode (DVD Video Recording Mode)' or 'Video Mode (DVD Video Mode)', so you have full control over your editing needs. You can also high-speed copy hard disk content directly to a DVD-R/DVD-RW disc — while you are watching it — by simply pushing the 'One-touch Copy' button on your remote control.

Programme duration ('real time')	Recording Mode used (on HDD)		High-Speed Copy HDD to DVD*	
	Name	Corresponding Max. Rec. time on DVD disc	4x Media	8x Media
1 hour	FINE	1 hour	15 min	8 min.
1 hour	SP	2 hours	7.5 min	4 min
1 hour	LP	4 hours	4 min	2 min
1 hour	EP	6 hours	2.5 min	1.25 min

1 The number of titles which can be recorded on the Hard Disk Drive is limited up to 250, even if there's still more recording time available.
 2 The actual speed depends on the recording mode and media used. Up to 48x high-speed copy can be reached when content is recorded in EP mode and copied to 8x DVD-R media.
 * Approximate copying time. Additional time will be required, e.g. to create management information.

Type		HDD		DVD-R/DVD-RW	
		Rec	Play	Rec	Play
Simultaneous Recording & Playback (different title)	Pattern-1	●	▶		
	Pattern-2	●	▶		▶
	Pattern-3		▶	●	
	Pattern-4 *			●	▶
Chase Play (same title)	Pattern-1	●	▶		
	Pattern-2 *			●	▶

* Only when using 2x and 4x DVD-RW media and 'VR Mode (DVD Video Recording Mode)'. While recording to the disc, playback during scan operations may not be smooth. Supported on DVR-920H-S, DVR-720H-S, DVR-520H-S, DVR-420H-S, DVR-320-S, DVR-220-S and RCS-9H.

CHASE PLAY* / SIMULTANEOUS RECORDING & PLAYBACK* / MULTI-TASKING

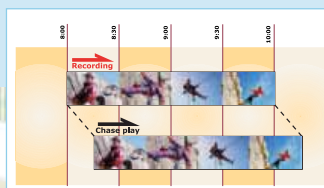
(DVR-920H-S, DVR-720H-S, DVR-520H-S, DVR-420H-S, RCS-9H)

Manage your viewing time, and never miss a programme, with the handy Chase Play feature. Now you can set a programme to record, leave, and pop back to catch the beginning, while it's still recording, no matter how late you are! Miss the kick-off of an important game? No problem. Watch it from the beginning of the recording, skip through the replays and ad-breaks, until you've caught up with the real-time event, which will still be recording, uninterrupted. You can also record a programme being broadcast while you're watching a previous recording.

Record new content onto the HDD while making a high-speed copy of previously recorded material from the HDD to a DVD disc or even while performing a Disc Backup! Now that's what we call true Multi-tasking!

Chase Play, Simultaneous Recording & Playback, and Multi-Tasking — Viewing flexibility has never been this easy.

* This feature is also available on the DVR-320-S and DVR-220-S, when a DVD-RW Ver. 1.1/2x or Ver 1.2/4x disc recorded in VR mode is used.



Chase Play



Simultaneous Recording and Playback

For full features and specifications, please see pages 82 — 83.

DVR-320-S

DVD Recorder

NEW

RW
COMPATIBLEDVD
VIDEO-RWDTS
DIGITALDOLBY
DIGITALJPEG
PhotoViewer

MP3

Windows
Media Center

PAL/NTSC

VIDEO Hi-Fi

i SR

- Connect your digital video camcorder, and experience easy editing with the Graphical User Interface (DV In/Out)
- Ultra-slim design (height: only 5.9 cm)
- Save precious time with Chase Play — watch a programme from the beginning, while it's being recorded, without interrupting the ongoing recording process
- Enjoy the purity of high-quality video images (recording and playback) under the best circumstances (RGB In/Out via SCART)
- Play back your home-recorded MP3 or WMA music files on CD-R/CD-RW discs, and view your digital still JPEG photographs as well
- Play back your home-recorded DVD-R/DVD-RW discs on a wide range of DVD players
- Find what you want easily and quickly (Advanced Disc Navigator, Disc History)

DV In/Out



EASY RECORDING

TWO CONVENIENT RECORDING MODES FOR DISC RECORDING (Available on all models)

Now you can record from one to six hours (up to 8 hours on the DVR-920H-S) of material in either 'Video Mode (DVD Video Model)' or 'VR Mode (DVD Video Recording Mode)' depending on desired picture quality. Select your recording quality (compression rate) from one of the presets for 1 (FINE), 2 (SP), 4 (LP), 6 (EP) or 8 (SLP)* hours of recording, or use manual mode for more exact control.

* Only available on the DVR-920H-S.

EASY TIMER RECORDING FUNCTION (Available on all models)



GUI 'Easy timer' Recording

With the user-friendly GUI (Graphical User Interface), you can simply use the remote control that operates the on-screen cursor to highlight 15-minute time blocks you wish to record.

RECORDING IN A SIZE THAT FITS THE DISC

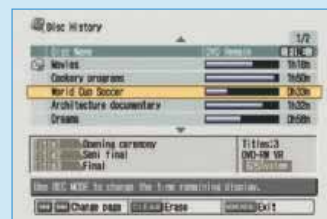
(Available on all models)

Thanks to the Auto Mode, the recording quality is automatically adjusted to fit within 4.7 GB — the normal capacity of a blank DVD disc, when recording to HDD. This feature is very convenient when you want to make a high-speed copy from HDD to disc. In case of recording to DVD, the recording quality is maximized for the space available on the disc.

DISC HISTORY FOR INSTANT OVERVIEW OF FREE RECORDING SPACE (Available on all models)

If you have run out of blank discs, it can take forever to work out which one of your existing discs might have enough space left to make an additional recording. But not any more. Just press the 'Disc History' button on the remote control*, and the on-screen GUI (Graphical User Interface) provides an overview of free recording space on up to 30 archived discs. So there's no need to individually insert the discs into the DVD recorder to check for space. Now you can locate a disc, and the free space you are looking for, with the Disc History function.

* Button not available on the DVR-920H-S remote control.



An overview of free space

DVR-220-S

DVD Recorder

NEW

RW
COMPATIBLE

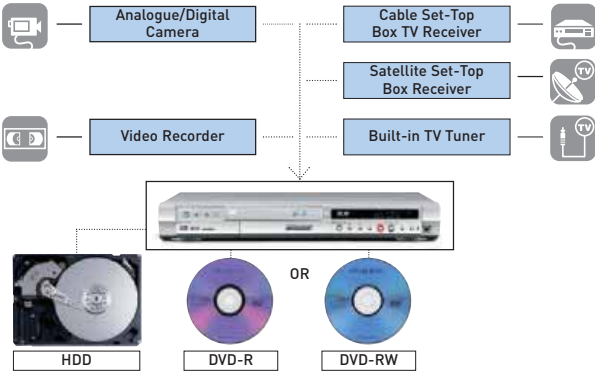


- Ultra-slim design (height: only 5.9 cm)
- Save precious time with Chase Play — watch a programme from the beginning, while it's being recorded, without interrupting the ongoing recording process
- Enjoy the purity of high-quality video images (recording and playback) under the best circumstances (RGB In/Out via SCART)
- Play back your home-recorded MP3 or WMA music files on CD-R/CD-RW discs, and view your digital still JPEG photographs as well
- Play back your DVD-R/DVD-RW discs on a wide range of DVD players
- Find what you want easily and quickly (Advanced Disc Navigator, Disc History)

5.9 cm
Slim Design



EASY RECORDING FROM A VARIETY OF SOURCES



EASY RECORDING FROM A VARIETY OF SOURCES

(Available on all models)

With Pioneer DVD recorders, you can record from a digital camcorder*, transfer your existing videotape to DVD, and record high quality TV. All new models also feature PAL/NTSC recording, and the built-in tuner is compatible with all European broadcasting systems. With PAL/NTSC recording, you can record either PAL or NTSC format onto DVD discs. With the HDD DVD Recorders, it is possible to store both formats on the Hard Disk Drive.

* Except DVR-220-S.

EASY RECORDING

CONVENIENT COPY MODES (DVR-920H-S, DVR-720H-S, DVR-520H-S, DVR-420H-S, RCS-9H)**■ ONE-TOUCH COPY**

While watching a recording made on the Hard Disk Drive, it is possible to copy it directly to a DVD-R/DVD-RW disc. It simply takes a push of the 'One-Touch Copy' button on the remote control. This high-speed copy mode copies the entire title from beginning to end.

**■ DISC BACKUP**

The DVD Disc Backup feature offers you a convenient way to backup important material on DVD to another recordable DVD disc. The material is first copied from the DVD disc to the HDD, then on to a second DVD disc. While the contents of the original disc are temporarily stored in the HDD, they cannot be played nor edited. All contents and information from the original DVD disc are backed up without any quality loss. It is also possible to record to the HDD or play back other content from the HDD during DVD disc backup.

Note: This feature only works with finalized DVD-R/DVD-RW discs recorded in 'Video Mode [DVD Video Mode]'.

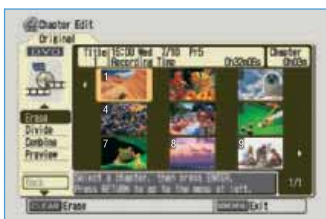


GUI 'Copy List'

■ COPY LIST

Use the GUI to add one or more recorded titles to the Copy List so that they are all copied together. You can also edit titles in the Copy List before making a copy.

EASY AND ACCURATE EDITING — JUST LIKE THE EXPERTS (Available on all models)



Chapter Edit Screen

Achieve precision editing on the Hard Disk Drive (HDD) or on DVD-RW discs recorded in 'VR Mode (DVD Video Recording Mode)'. The Erase Section screen lets you define exactly where you want to delete a part on the title which you edit. Simply pick the frame where editing starts and the one where you want it to end, and delete those unwanted commercials that interrupt your movie.

Accurate editing is now easier than ever — just use your remote control and Pioneer's GUI (Graphical User Interface) and call up the Chapter Edit screen to use the advanced editing functions, such as Erase, Chapter Edit*, Erase Section*, and Undo Last Edit**. Access your original content, and build a Play List based on the original content. Erase all or part of the original and free up extra recording time, or leave it as is and play around with the Play List. See where your edits start and end, preview final results. Pioneer DVD recorders play back whatever is in your Play List, keeping your original content intact.

* Except 'Video Mode [DVD Video Mode]'.

** Except Hard Disk Drive.

EASY PLAYBACK FOR COMFORTABLE VIEWING (Available on all models)

ADVANCED DISC NAVIGATOR

The advanced Disc Navigator interface with improved response time on all Pioneer DVD Recorders, uses a thumbnail image menu to guide you through the various playback functions. By selecting a thumbnail image, the corresponding title starts playing within the thumbnail frame, complete with sound playback. This means that you can now easily recognize a recorded programme.

Note: For 'Video Mode [DVD Video Mode]' discs, this feature can only be used as long as the disc has not yet been finalised.



GUI with moving thumbnails

1.5 VIEW SCAN

When fast forwarding during DVD playback, it is often very difficult — if not impossible — to understand what is being said. View Scan allows you to play back a recording at 1.5 times its normal speed, while keeping the sound intelligible. This handy feature makes it possible for you to easily trace a very specific scene, or to watch a recorded programme more quickly and still understand the dialogue.

QUICK HARDWARE RESPONSE (Available on all models)

Operation response time is first-rate on the new DVD recorders. Pioneer's engineers developed the DVD Recorders so that functions such as initialising, playback after power up and recording finalization, are performed as fast as possible. Now you can see the image on-screen and hear sound almost immediately, from the time you turn on the power.

Recording equipment and copyright:

You may use this product only to reproduce or copy materials for which you own the copyright or have obtained permission to copy from the copyright owner or for which you otherwise have a legal right to reproduce or copy. Unless you own the copyright or have obtained permission from the copyright owner or otherwise have a legal right to reproduce or copy, you may be violating the law, including copyright law, and may be subject to payment of damages and other remedies. This product incorporates copyright protection technology that is protected by method claims of certain U.S. patents and other intellectual property rights owned by Macrovision Corporation and other rights owners. Use of this copyright protection technology must be authorized by Macrovision Corporation, and is intended for home and other limited viewing uses only unless otherwise authorized by Macrovision Corporation. Reverse engineering or disassembly is prohibited.

STERLING TECHNOLOGY — FOR VIEWING PERFECTION (Available on all models)

RGB INPUT/OUTPUT FOR BEAUTIFUL MEMORIES

For absolute top-quality video, Pioneer DVD recorders feature RGB input via Euro-SCART. Via the RGB video input on the Euro-SCART terminal, the video signals coming out of an attached component (e.g. a set-top box) ensure the purest, most high-quality image. View your favourite moments in the highest image quality possible, and select your matching video input quality.

PICTURE QUALITY ADJUSTMENT FEATURES

The Video Adjust menu allows you to set the picture quality for the built-in TV tuner and other external inputs. Achieve the best possible recorded picture quality, and make changes to brightness and colour noise reduction. When watching TV or other external sources, you can adjust settings according to the specific nature of the source. Choose from a selection of pre-defined settings or use the Video Adjust menu to create individual customised settings.

AN ADVANCED MPEG VIDEO ENCODER

Advanced encoder technology guarantees stunning video. Combining Single-Pass Variable Bit Rate Control with Multi-Resolution, Pioneer DVD recorders perform ideal video image compression encoding for dramatically improved picture quality. This means you experience more natural and smoother images when watching fast-moving content.

HIGH-QUALITY 16-BIT/48 kHz LINEAR PCM AUDIO RECORDING

DVD recorders typically use 2.0-channel Dolby Digital compressed audio encoding. But there may be occasions where you would like to have an even better audio quality. With Pioneer's new DVD recorders, high picture quality can be combined with high audio quality. When recording using the best quality recording setting (FINE or "Manual 32"), the audio is recorded in uncompressed 16-bit/48 kHz Linear PCM stereo format. This delivers great-sounding audio to accompany the high picture quality. So don't worry when the next final of that international piano contest is being broadcast!

CPRM (CONTENT PROTECTION FOR RECORDABLE MEDIA)

CPRM (Content Protection for Recordable Media) is a content protection system required for the recording of "copy once" broadcast programmes. All Pioneer DVD recorders are CPRM compatible, which means that you can record copy-once broadcast programmes but you cannot then make a copy of those recordings. CPRM recordings can only be made on CPRM-compliant DVD-RW discs formatted in 'VR Mode (DVD Video Recording Mode)', and CPRM recordings can only be played on players that are specifically compatible with the technology.

RW-COMPATIBILITY FOR LEGAL VIEWING

RW COMPATIBLE This label indicates playback compatibility with DVD-RW discs recorded in 'VR Mode (DVD Video Recording Mode)'. However, for discs recorded with a record-only-once encrypted programme, playback can only be achieved using the CPRM compatible device.

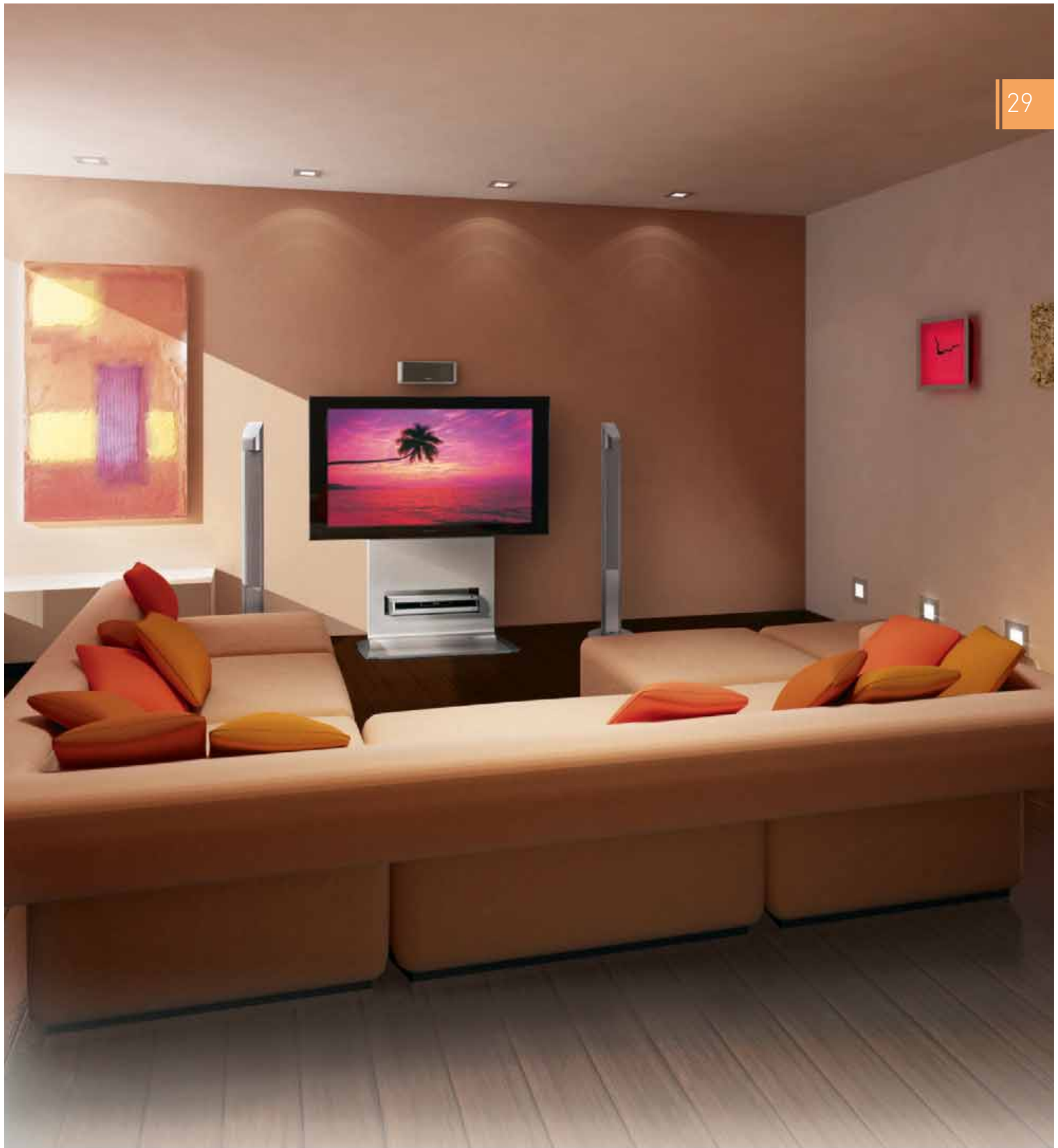
	DVR-920H-S	DVR-720H-S	DVR-520H-S	DVR-420H-S	DVR-320-S	DVR-220-S
HDD (Hard Disk Drive)	250 GB	160 GB	80 GB	80 GB	—	—
High Speed Copy	55x	48x	48x	48x	—	—
Maximum recording time on HDD	433 hours	204 hours	102 hours	102 hours	—	—
HDMI	✓	—	—	—	—	—
Height	8.7 cm	5.9 cm	5.9 cm	5.9 cm	5.9 cm	5.9 cm
Chase Play/Simultaneous recording and playback	✓ / ✓	✓ / ✓	✓ / ✓	✓ / ✓	✓ / ✓*	✓ / ✓*
DV In/Out	✓	✓	✓	—	✓	—
RGB In/Out via SCART	✓	✓	✓	✓	✓	✓
Advanced Disc Navigator	✓	✓	✓	✓	✓	✓
GUIDE Plus+™	✓	—	—	—	—	—

* Only for DVD-RW Ver. 1.1/2x or Ver.1.2/4x disc.

Recommended Media  TDK

For full features and specifications, please see pages 82 — 83.





Slip into the comfort of a Pioneer Digital Home Cinema System. Easy to operate, you can indulge in unsurpassed surround sound. It's like having your own movie theatre at home. The new sleek all-in-one system features a built-in Hard Disk Drive DVD Recorder. Offering more than 100 hours of recording, it's perfect for long feature sessions of your favourite movies. With revolutionary 3-Spot Surround Setting speakers, there's no need to make space for rear speakers and no more cables running around the room — simply great sound. Versatility is the key: using your 3-Spot Surround Setting system in a 5.1-channel setting is always an option. Available on other systems too, you can choose your speakers. Go for tall and elegant or trendy and compact. Or opt for a system with a Digital Wireless rear speaker. The ultra-slim subwoofer provides even greater flexibility. Save on space, not on sound.

30 DIGITAL HOME CINEMA SYSTEMS

RCS-9H

HDD DVD Recorder Home Cinema System

600 W (100 W x 6) RMS

NEW

RW
COMPATIBLE

DIRECT
DIFFUSE

ADVANCED
DIGITAL
SOUND

DOLBY
DIGITAL
AC-3

HDD
HARD DISK DRIVE

DVD
VIDEO-R/W

RGB
TERMINAL

JPEG
PhotoViewer

MP3

CD-R/D
CD-RW

PAL/NTSC

VIDEO

SR+

VIDEO

SR+

SR+

SR+

SR+

80 GB

Hard Disk Drive

3-Spot

Surround Setting



- Record directly onto the high-capacity 80 GB Hard Disk Drive for more than 100 hours¹ of recording (80 GB HDD)
- Copy recorded content up to 48 times² faster than real-time from HDD to DVD-R/DVD-RW, without loss of quality (High-Speed Copy)
- Save precious time with Chase Play — watch a programme from the beginning, while it's being recorded, without interrupting the ongoing recording process
- Appreciate the powerful sound of this 600 W RMS HDD DVD recorder Home Cinema System (Total Power)
- Enjoy the purity of high-quality video images (recording and playback) under the best circumstances (RGB In/Out via SCART)
- Connect your digital video camcorder, and experience easy editing with the Graphical User Interface (DV In/Out)
- Enjoy quality surround sound from 3-Spot Surround Setting, or opt for the more traditional 5.1-channel setting
- Combine your Pioneer components with style — the RCS-9H is designed to match your Plasma Display
- View status and control features on a Pioneer Plasma TV (SR+ Terminal)
- Play back your home-recorded MP3 or WMA music files on CD-R/CD-RW discs, and view your digital still JPEG photographs as well
- Play back your home-recorded DVD-R/DVD-RW discs on a wide range of DVD players

¹ The number of titles which can be recorded on the Hard Disk Drive is limited up to 250, even if there's still more recording time available.

² The actual speed depends on the recording mode and media used. Up to 48x high-speed copy can be reached when content is recorded in EP mode and copied to 8x DVD-R media.

ALL-IN-ONE DIGITAL HOME CINEMA SYSTEM WITH BUILT-IN 80 GB HARD DISK DRIVE DVD RECORDER (RCS-9H)

The RCS-9H Digital Home Cinema System with built-in 80 GB hard disk drive represents a true revolution in home cinema. This stylish system comprises a main unit DVD recorder with built-in 80 GB HDD capacity — which also functions as a DVD player, a 5.1-channel amplifier, and an FM/AM tuner — not to mention a space-saving speaker configuration with 3-Spot Surround Setting technology. All of this can be controlled by just one remote control. At only 77.5 mm high, the main unit slots in neatly anywhere. The stylish sophisticated design with silver and black finish fits perfectly with Pioneer's Plasma TVs.

Pioneer's RCS-9H Digital Home Cinema System is ideal for you, if you regularly record and overwrite television programmes. Material can be recorded directly onto the Hard Disk Drive for temporary storage. For permanent storage, programmes can simply be selected and archived on DVD-R/DVD-RW discs. In EP recording mode, up to 102 hours of programmes can be recorded onto the Hard Disk Drive, which offers you a myriad of options for easy and convenient viewing and storage.

Rec. mode	Recording time on HDD
	RCS-9H (80 GB HDD)
FINE	about 17 hours
SP	about 34 hours
LP	about 68 hours
EP	about 102 hours

Note: Max recording time per title:
360 minutes or 6 hours.

VIDEOplus is a trademark of Gemstar Development Corporation.

For more details on features and technology, please visit www.pioneer.co.uk

IMPRESSIVE RECORDER FEATURES

Below you will find some of the RCS-9H 80 GB HDD DVD recorder Home Cinema System's most important recorder features. For a full explanation on all recording, editing and playback benefits, please see the DVD recorder chapter.

■ HIGH SPEED COPYING FOR OPTIMAL TIME-SAVING

Pioneer has made high-speed copying even faster! Now you can copy a programme up to 48 times faster than it would take to watch it (depending on the recording mode and disc used) without any deterioration in quality.

Using a 8x DVD-R disc, the copying speed in "Video Mode" ranges from 8x to 48x speed, while a 4x DVD-RW disc covers 4x to 24x. That means that a copy of a recording can now be made at up to 48 times the speed of the programme's real time duration. For example, a one-hour programme recorded in EP recording mode can be copied onto a DVD-R disc in about 1.25 minutes. For full details, please turn to page 23 of the DVD Recorders chapter.

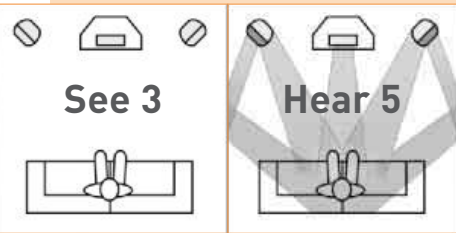
■ CHASE PLAY AND MULTI-TASKING

"Chase Play" is a very convenient feature of Pioneer's RCS-9H, with which you can manage your viewing time, and never miss a programme. Now you can set a programme to record, leave, and pop back to catch the beginning, while it's still recording, no matter how late you are! Miss the kick-off of an important game? No problem. Watch it from the beginning of the recording, skip through the replays and ad-breaks, until you've caught up with the real-time event, which will still be recording, uninterrupted. You can also record a programme being broadcast while you're watching another previous recording, or record on HDD while high-speed copying from HDD to DVD-R/DVD-RW.

■ RECORDING FROM A DIGITAL CAMCORDER (DV IN/OUT)



The RCS-9H is great for the management of home movies. Connect your digital video camcorder into the DV In/Out terminal and discover how easy it is — you only need to use your remote control to navigate through functions on both the camcorder and the RCS-9H, using Pioneer's Graphical User Interface.



3-SPOT SURROUND SETTING

SEE 3... HEAR 5! (RCS-9H, DCS-424, DCS-323)

For those who enjoy a simple and minimalist décor, Pioneer's 3-Spot Surround setting will come as a welcome surprise. In an enterprising, space-saving innovation, rear satellite speakers can now be moved to the front, avoiding the unsightly wiring crossing your living-room to your rear speakers. Now DSP- and Direct Diffuse technology combine to give you crisp, quality 5.1-channel surround sound with all the speakers physically positioned in the front. Sound beams are reflected and diffused from the rear speaker units neatly

mounted on your front tall-boy speakers, so you can enjoy the full impact of brilliant surround sound in a wide "sweet spot". In addition, the speaker package can also be used in a conventional 5.1-channel surround setting. All you have to do is place all the speakers separately in the front and back of the room.



Remove the clickable top speaker to use this system in a traditional 5.1-channel setting

32 DIGITAL HOME CINEMA SYSTEMS

DCS-525

DVD Home Cinema System

650 W (100 W x 6 + 25 W x 2) RMS

NEW

RW
COMPATIBLE

DIRECT
DIFFUSE

DVD
VIDEO

MIDNIGHT
LISTENING

ADVANCED
SOUND

DOLBY
DIGITAL
EXTRA

MP3

JPEG
PhotoViewer

MP3

MP3

MP3

MP3

MP3

MP3

MP3

MP3



Digital Wireless Rear Speaker

- Enjoy a cable-free living room with the one-body Direct Diffuse digital wireless rear speaker
- Experience the powerful sound of this 650 W RMS DVD Home Cinema System
- Place the ultra-slim subwoofer (9 cm* wide) horizontally or vertically, in accordance with your interior
- 2.4 GHz digital transmitter, resulting in digital-CD-quality sound transfer
- Control both your television and DVD Home Cinema System with the handy TV preset remote control

* When the grille is included, the subwoofer is 10.8 cm wide.



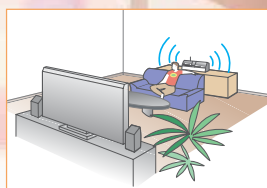
INCREDIBLE FLEXIBILITY THANKS TO DIGITAL WIRELESS TECHNOLOGY (DCS-525)



Visible cables running through your lounge to your rear speakers are a thing of the past, with Pioneer's revolutionary Digital Wireless technology. The new Direct Diffuse Digital Wireless rear speaker, with built-in stereo amplifier and separate transmitter gives new meaning to the concept of flexibility. Thanks to Direct Diffuse technology, you can get full surround sound with only one rear speaker-unit, as the traditional two rear speakers in the conventional 5.1-channel setting are now combined into one body. The transmitter sends out the sound signal to the wireless speaker in digital format, and the Direct Diffuse technology makes the sound bounce off the walls and ceiling, and approach you from all directions — for a magnificent, cinematic surround sound experience. The wireless technology also gives you freedom to position your rear speaker — vertically (at ear level or down low) or horizontally (more to the left or more to the right). There are 3 new modes: Wireless Wide expands the rear sound for a far wider surround sound effect when the speaker is placed behind the listener, while both Wireless Left Side and Wireless Right Side make natural surround sound possible even with the wireless speaker positioned beside the listener.



Optional speaker
stand: CP-F515



Position the rear speaker behind the listener, in the same room as the system's 2 front speakers, centre speaker and subwoofer for multi-channel surround sound.



Take the rear speaker into an adjacent space to enjoy 2-channel audio.

You can even move the stereo wireless rear speaker unit to an adjacent space, and select "Stereo Mode" to enjoy fabulous 2-channel audio, remotely from the main system. Are you ready for the freedom of Digital Wireless technology?

For more details on features and technology, please visit www.pioneer.co.uk

DCS-424

DVD Home Cinema System

NEW

RW
COMPATIBLE

600 W (100 W x 6) RMS



33

3-Spot Surround Setting

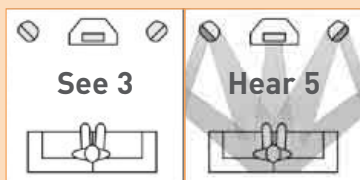


- Enjoy quality surround sound from 3-Spot Surround Setting, or opt for the more traditional 5.1-channel setting
- Appreciate the powerful sound of this 600 W RMS DVD Home Cinema System
- Place the ultra-slim subwoofer (9 cm* wide) horizontally or vertically, in accordance with your interior
- Enjoy easy system set-up (Easy Room and Seat Position Set-up)
- View status and control features on a Pioneer Plasma TV (SR+ Terminal)
- For additional energy and depth, set all speakers to face front when playing 2-channel audio (Extra Power Mode)
- Control both your television and DVD Home Cinema System with the handy TV preset remote control



Speakers facing to the front for use in Extra Power Mode

* When the grille is included, the subwoofer is 10.8 cm wide.



See 3

Hear 5

MAXIMISE THE BENEFIT OF 3-SPOT SURROUND SETTING

(RCS-9H, DCS-424, DCS-323)

Pioneer's 3-Spot Surround Setting is not only a space-saving speaker configuration that brings the rear speakers in a normal 5.1-channel setting to the front. It's a cleaner look as well, with all the benefit of normal 5.1-channel surround sound, thanks to the use of DSP-, and Direct Diffuse technology, in which sound beams are reflected and refracted, creating a wide "sweet spot". This provides a better listening experience (for two or more people) than can be achieved with other "front speaker only" solutions, which rely on virtual surround technology, rather than true 5.1-channel surround. In addition the versatile 3-Spot Surround Setting speaker package can also be used in a conventional 5.1-channel setting. For the best sound quality possible, surf to www.pioneer-eur.com and get more information on how to position your speakers for maximum effect.



Remove the clickable top speaker to use this system in a traditional 5.1-channel setting



CHOOSE YOUR SUBWOOFER'S POSITION (DCS-525, DCS-424, DCS-323)

Place your subwoofer horizontally or vertically — this ultra-slim subwoofer has special feet for stability in either position.

34 DIGITAL HOME CINEMA SYSTEMS

DCS-323 DVD Home Cinema System

600 W (100 W x 6) RMS

NEW

RW
COMPATIBLE

OBJECT DIFFUSE

DVD VIDEO

MIDNIGHT LISTENING

ADVANCED SURROUND

DOLBY DIGITAL

DTS

JPEG

MP3

PhotoViewer

SR+ Terminal

CD-R/D-S

PAL/NTSC

SR+



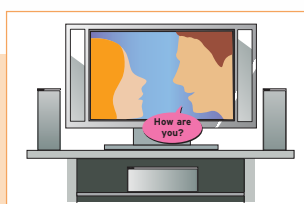
3-Spot
Surround Setting



- Enjoy quality surround sound from 3-Spot Surround Setting, or opt for the more traditional 5.1-channel speaker setting
- Appreciate the effortless sound of a powerful 600 W RMS DVD Home Cinema System
- Place the ultra-slim subwoofer (9 cm* wide) horizontally or vertically, in accordance with your interior
- Enjoy easy system set-up (Easy Room and Seat Position Set-up)
- View status and control features on a Pioneer Plasma TV (SR+ Terminal)
- For additional energy and depth, set speakers to face front when playing 2-channel audio (Extra Power Mode)
- Control both your television and DVD Home Cinema System with the handy TV preset remote control



* When the grille is included, the subwoofer is 10.8 cm wide.



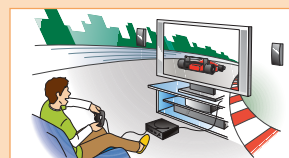
With Dialogue Enhancement mode, centre channel sounds appear to project from the TV, for enhanced dialogue reproduction.

action movie, while "Advanced Music" mode would make anyone believe they were in a concert-hall. If you love sports you will be thrilled by the clarity of "Sports" mode. Try out "Game" mode if you're an avid gamer. This enhanced mode for intense video game action deepens the sound of powerful movement and speed, which makes it perfect for shooting and racing games.— you will love the boost in play performance!

PIONEER'S ORIGINAL DSP MODES (RCS-9H, DCS-525, DCS-424, DCS-323, DCS-222)

Whenever spoken dialogue from the centre speaker isn't clear, you can switch on the "Dialogue Enhancement" mode. It boosts centre channel reproduction during action sequences so that the dialogue stands out from other background sounds. This mode also positions dialogues and vocals, usually located in the centre channel, between the two front speakers, even if the actual centre speaker is above or below the TV. When the front speakers are at the same level as the TV, the enhanced dialogue will appear to be coming from the TV.

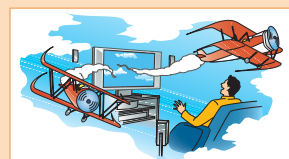
There are also other Advanced Surround modes for more focused enjoyment of your favourite kind of viewing. "Advanced Movie" mode brings out theater-type sound in any



Game mode puts you right in the middle of the action for an intense gaming experience.



Sports mode blasts you straight to the scene of the match, as though you were personally at the stadium.



Advanced Movie mode gives you movie-hall sound, to bring out the best in any action movie.

DCS-222

DVD Home Cinema System

450 W (75 W x 6) RMS

NEW

RW
COMPATIBLEDVD
VIDEOMIDNIGHT
LISTENINGADVANCED
SOUNDDOLBY
DIGITAL
AC3/5.1DOLBY
DIGITAL
AC3/5.1JPG
PhotoViewer

MP3

Windows
Media

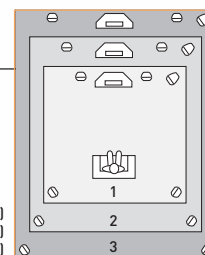
D-R-D-S PAL/NTSC

450 W
Total Power

- This DVD Home Cinema System packs 450 W RMS of power
- Play back your home-recorded MP3 or WMA music files on CD-R/CD-RW disc, and view your digital still JPEG photographs as well
- Appreciate the sleek design of the space-saving, slim subwoofer, which blends perfectly into any interior
- Select the settings according to your room size and listening position for optimal sound (Easy Room and Seat Position Set-up)
- Always hear the dialogue, with enhanced dialogue reproduction (Dialogue Enhancement)
- Adjust and optimize picture quality settings (Video Adjust)
- View pure, high-quality images (RGB video via Euro-SCART)
- Control both your television and DVD Home Cinema System with the handy TV preset remote control

EASY ROOM AND SEAT POSITION SET-UP

Now you can select your room size and seat position for maximum sound impact. By using the Room Set-up button, you can select the size of your room (large, medium, small) and the sound will be adjusted accordingly. You're also able to indicate your listening position (forward, middle, back) so that the sound (delay) can be matched to where you're sitting.



- 1) Small Room (approx. 3.5 x 4.5 m)
2) Medium Room (approx. 5.5 x 6.0 m)
3) Large Room (approx. 7.5 x 9.0 m)

	RCS-9H	DCS-525	DCS-424	DCS-323	DCS-222
Total Power	600 W RMS (100 W x 6)	650 W RMS (100 W x 6 + 25 W x 2)	600 W RMS (100 W x 6)	600 W RMS (100 W x 6)	450 W RMS (75 W x 6)
Built-in DVD Recorder	✓	—	—	—	—
3-Spot Surround/Digital Wireless Rear Speaker/5.1-ch. setting	✓ / — / ✓	— / ✓ / ✓	✓ / — / ✓	✓ / — / ✓	— / — / ✓
Subwoofer	Standard (19.2 cm)	Ultra-slim (9 cm)*	Ultra-slim (9 cm)*	Ultra-slim (9 cm)*	Slim (11.5 cm)*
SR + Terminal	✓	✓	✓	✓	—
Easy Room and Seat Position Set-Up	✓	✓	✓	✓	✓
RGB Video Output via Euro-SCART	✓	✓	✓	✓	✓
Dialogue Enhancement	✓	✓	✓	✓	✓
Video Adjust	✓	✓	✓	✓	✓
MP3/WMA/JPEG	✓ / ✓ / ✓	✓ / ✓ / ✓	✓ / ✓ / ✓	✓ / ✓ / ✓	✓ / ✓ / ✓
One-touch Speaker Terminals	—	✓	✓	✓	✓

* Grill width not included.

For full features and specifications, please see pages 84 — 86.

36 DIGITAL HOME CINEMA COMBINATIONS

HC-73S-WL/HC-73KG-WL Digital Home Cinema Combination

NEW

Amplifier 75 W x 5 RMS / Satellite 100 W Max. / Subwoofer 85 W RMS / Digital Wireless 25 W x 2 RMS



RW
COMPATIBLE



■ These combinations consist of DVD player DV-470-S/K, A/V receiver VSX-C402-S/K, and A/V speaker set S-CR50-HTD, subwoofer S-W90S and a Direct Diffuse Digital Wireless Rear Speaker kit (XW-HTD525)*

HC-63S-WL/HC-63KG-WL Digital Home Cinema Combination

NEW

Amplifier 80 W x 5 DIN / Satellite 100 W Max. / Subwoofer 85 W RMS / Digital Wireless 25 W x 2 RMS



RW
COMPATIBLE



■ These combinations consist of DVD player DV-470-S/K, A/V receiver VSX-D514-S/K, and A/V speaker set S-CR50-HTD, subwoofer S-W90S and a Direct Diffuse Digital Wireless Rear Speaker kit (XW-HTD525)*

* Only for use with Pioneer A/V receivers.
DivX is a trademark of DivX Networks, Inc.

For more details on features and technology, please visit www.pioneer.co.uk

HC-53S/K/SK

Digital Home Cinema Combination

NEW

Amplifier 75 W x 5 RMS / Satellite 100 W Max. / Subwoofer 85 W RMS



HC-53-SK

■ These combinations consist of DVD player DV-470-S/K, A/V receiver VSX-C402-S/K, and A/V speaker set S-V50-G/S-V50N-K



HC-53-S



HC-53-K

HC-43S/K

Digital Home Cinema Combination

NEW

Amplifier 75 W x 5 RMS



HC-43-S



HC-43-K

■ These combinations consist of DVD player DV-470-S/K and A/V receiver VSX-C402-S/K

DivX is a trademark of DivX Networks, Inc.

For full features and specifications on components comprising a package, see the features charts on pages 84 — 86.

38 DVD PLAYERS

Want dazzling images and sumptuous sound? Then a Pioneer DVD player is the only one for you. Recognised for its unrivalled performance, the DV-668AV has been bestowed with the prestigious EISA award. Equipped with advanced digital interfacing, Pioneer's high-end DVD players guarantee supreme audio and video with absolutely no loss of quality. Every DVD player features a futuristic flicker reducing technology, which makes DVD movie watching easy on the eyes. Of course, you'll find a host of winning features in each model. From compatibility with DVD-Audio and SACD discs, to playback of the latest video format — DivX®. You have the option of design to choose from, with ultra-slim and stylish models that are at home anywhere. Whatever your preference, you'll be enchanted and enthralled. As for superb value, that goes without saying.



FULL AUDIO AND VIDEO DIGITAL TRANSMISSION

HDMI™ HDMI (HIGH-DEFINITION MULTIMEDIA INTERFACE)

(DV-868AVi-S, DV-668AV-S)

Equipped with the HDMI interface, both the DV-868AVi-S and DV-668AV-S transfer high-definition digital content — directly and securely — from audio/video disc to a TV or Plasma display. This means you can enjoy the highest level of uncompressed digital video and superior audio* from original sources, without loss of quality, and experience image and sound as they were meant to be. HDMI is so easy-to-use — it only requires one cable.

The DV-868AVi-S is also equipped with a Two-Dimensional Resolution Expander Video Scaler (part of Pioneer's exclusive Digital Direct Pixel Drive**), which uses sophisticated processing algorithms to (up)convert the image, changing its resolution and aspect ratio to match the desired output specifications. This outstanding technology used with a Plasma TV or front projectors supports high-definition images, ensuring the best image quality possible.

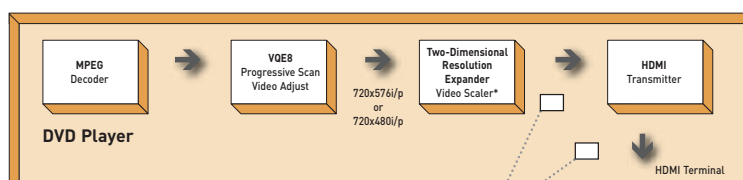
* Digital audio on HDMI compatible with 44.1/48 kHz, 16/20/24-bit, 2-ch/2-ch downmix LPCM or bitstream output (Dolby Digital, DTS and MPEG).

** 'Digital Direct Pixel Drive' is a trademark of Pioneer Corporation.

Note: 1) To connect a DVI/HDCP compatible device to the HDMI connector, a conversion cable or adaptor is necessary. Please note that DVI does not feature audio transfer.

2) These units have been designed to be compliant with HDMI (High Definition Multimedia Interface) version 1.0. Depending on the component you have connected, using a DVI connection may result in unreliable signal transfers.

DIGITAL DIRECT PIXEL DRIVE

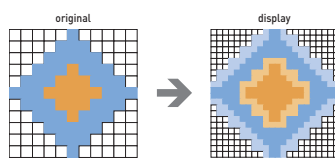


* DV-868AVi-S only

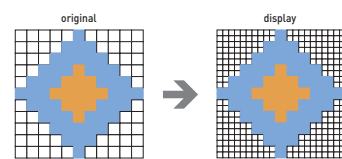
	i/p	PAL/NTSC	DV-668AV-S	DV-868AVi-S
640 x 480	p	NTSC	—	•
720 x 480	i	NTSC	—	•
720 x 480	p	NTSC	•	•
720 x 576	i	PAL	—	•
720 x 576	p	PAL	•	•
1,280 x 720	p	PAL/NTSC	—	•
1,920 x 1,080	i	PAL/NTSC	—	•



ANALOGUE CONNECTION



HDMI DIGITAL CONNECTION



DV-868AVi-S DVD-Audio/Video/SACD Player

RW
COMPATIBLE

HDMI™

i

DVD

AUDIO

VIDEO

DIGITAL

DOLBY

DIGITAL

SRS

TruSurround

MPEG

MP3

Hi-bit

DUAL

PROGRESSIVE

SCAN

PAL/NTSC

5.1

i.LINK

HDMI



- Enjoy the highest level of uncompressed digital video and superb audio from original sources without loss of quality (HDMI)
- Achieve the very best full digital device-to-device communication with jitter-free transmission of DVD-AUDIO/CD/SACD (i.LINK)
- Relish superlative picture quality, as close as possible to the DVD source (216 MHz/14-Bit Video D/A Converter, with NSV* Technology)
- Ensure the best image quality possible (Two-Dimensional Resolution Expander Video Scaler)
- Delight in smoother and more natural-looking images (Video Quality Enhancer — VQE8)
- Benefit from ultra-rigid chassis strength and stability, which absorbs unwanted vibrations, for stable sound reproduction (Triple-Layered Chassis)
- Enjoy total immersive, uncompressed, high-resolution 6-channel surround sound (DVD-Audio/SACD)
- Revel in the very best picture quality, and easily adjust and save picture quality settings (Video Adjust)
- No more sore eyes from movie marathons — the DV-868AVi-S offers you a flicker-free, cinematographic viewing experience (Dual PureCinema Progressive Scan**)
- Create a more natural sound and choose your favourite digital filter setting (Legato Link Conversion)
- Savour the revelation of detail in low-level sounds (Hi-Bit)
- Achieve high-fidelity sound reproduction (192 kHz/24-bit D/A Converter)

* 'NSV', (Noise Shaped Video) is a registered trademark of ANALOG DEVICES, INC.

** Requires a compatible TV.

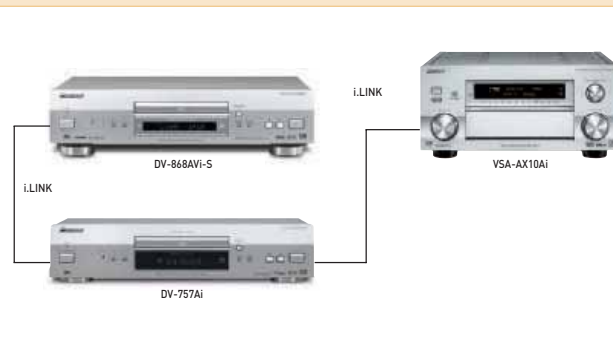
i.LINK* (ADVANCED RESOLUTION DIGITAL AUDIO INTERFACE) (DV-868AVi-S, DV-757Ai)

The i.LINK interface is also known as IEEE1394 or FireWire. Thanks to the support for high throughput and the existence of industry standard content protection technology, it is the ideal interface for new, demanding digital environments like DVD-Audio and SACD.

The DV-868AVi-S and DV-757Ai — equipped with i.LINK Advanced Resolution Digital Audio Interface — pass the digital content of an audio disc directly and securely to a compliant amplifier or receiver. You can pass uncompressed signals through the interface (e.g. LPCM or DSD), as well as compressed audio formats (e.g. Dolby Digital, DTS, MPEG). Pioneer's engineers developed the i.LINK Advanced Resolution Digital Audio Interface to deliver this output free of jitter**. The i.LINK interface even goes further, integrating support for device-to-device communication, which enables, for example, operation commands to be transferred via the i.LINK connection — for digital interfacing with ease.

* The i.LINK interface is also known as IEEE1394. FireWire is a trademark. 'i.LINK' and the 'i.LINK' logo are trademarks.

** Except DVD-Video and VideoCD (Dolby Digital, MPEG and DTS).



i.LINK interface for digital-to-digital pure audio signal transmission without data loss

DV-757Ai DVD-Audio/Video/SACD Player

RW
COMPATIBLEDVD
AUDIO-VIDEODOLBY
DIGITALDOLBY
DIGITALDOLBY
DIGITALSRS
TruSurroundDTS
ESMPEG
2

MP3



Hi-bit

DUAL
PROGRESSIVE
SCAN

PAL/NTSC



5.1

i.LINK



- Achieve the very best full digital device-to-device communication with jitter-free transmission of DVD-Audio/CD/SACD (i.Link)
- Reveal more detail in low-level sounds (Hi-Bit Conversion)
- Alleviate the harshness of some CDs and create a more natural sound (Legato Link Conversion PRO)
- Eliminate interference during audio playback (Video Off)
- No more sore eyes from movie marathons — the DV-757Ai offers you a flicker-free, cinematographic viewing experience (Dual PureCinema Progressive Scan**)
- Get excellent picture quality, as close as possible to the DVD source (108 MHz/12-bit Video D/A Converter with NSV* Technology)
- Enjoy total immersive, uncompressed, high-resolution 6-channel surround sound (DVD-Audio/SACD)
- Achieve superior sound quality (Burr Brown PCM1738)
- Accurate gain and delay adjustment by DSP
- Revel in the very best picture quality, and easily adjust and save picture quality settings (Advanced Video Adjust)
- Play back MP3 files from CD-R, CD-RW or CD-ROM discs.

* 'NSV', (Noise Shaped Video) is a registered trademark of ANALOG DEVICES, INC.

** Requires a compatible TV.

TOP-NOTCH VIDEO TECHNOLOGY

216 MHZ/14-BIT VIDEO D/A CONVERTER (DV-868AVi-S)

216 MHZ/12-BIT VIDEO D/A CONVERTER (DV-668AV-S)



216 MHz/14-Bit
Video D/A converter
DV-868AVi-S

Relish picture perfect images with the DV-868AVi-S's built-in 216 MHz/14-bit D/A Converter — the highest quality in the industry — and the DV-668AV-S's 216 MHz/12-bit D/A Converter. Boosting image resolution well beyond the limit of traditional data converters, both Video DACs provide you with the very best picture quality and superbly realistic images, as close as possible to the original DVD source.

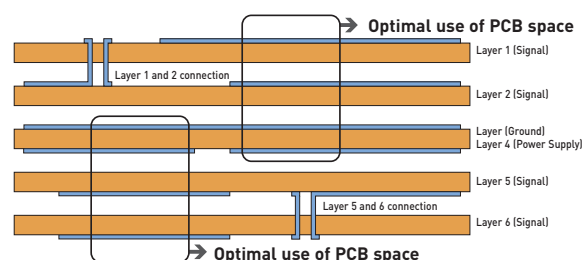
AUDIO/VIDEO SEPARATE DESIGN WITH 6-LAYER BUILD-UP PCB (DV-868AVi-S, DV-668AV-S)

With Pioneer's DV-868AVi-S and DV-668AV-S DVD players, beauty is more than skin deep. Stylish design on the outside is matched by innovative design on the inside. Unique to Pioneer, the new 6-layer build-up PCB (Printed Circuit Board) separates the audio block and video block for optimal analogue signal transfer. The video circuit block and audio circuit block are also separated for digital signal transfers, with the main signal processing block located between them. This advanced PCB design approach offers a more direct signal route, ensuring minimum signal interference. Higher quality of video and audio is almost impossible to imagine.

VIDEO QUALITY ENHANCER VQE8 FOR PERFECT PICTURE QUALITY (DV-868AVi-S, DV-668AV-S)

These DVD players take technology to new heights with the latest Video Quality Enhancer (VQE8). A step up from Pioneer's own VQE7, which offers you superb video quality adjustments (using PureCinema Progressive Scan and Component Frame Recursive Digital Noise Reduction), the new VQE8 significantly advances the progressive processing function for all video materials. With even further enhanced jagged noise elimination, you will delight in smoother and more natural looking images. Never have pictures been more perfect.

Cross Section Build-Up PCB



6-Layer Build-Up PCB realising a minimal signal interference

For more details on features and technology, please visit www.pioneer.co.uk

DV-668AV-S

DVD-Audio/Video/SACD Player



HDMI



- Enjoy the highest level of uncompressed digital video and audio from original sources (HDMI)
- Achieve the very best device-to-device communication with jitter-free transmission of DVD-Audio/CD/SACD (i.Link)
- Relish extraordinary picture quality, as close as possible to the DVD source [216 MHz/12-bit Video D/A Converter, with NSV* Technology]
- Delight in smoother and more natural-looking images (Video Quality Enhancer)
- Benefit from a strengthened structure, which absorbs unwanted vibrations, for stable audio reproduction (Triple-Layered Chassis)
- Enjoy optimal analogue signal transfer with separated audio and video blocks (6-layer Build-up PCB)
- No more sore eyes from movie marathons — the DV-668AVi-S offers you a flicker-free, cinematographic viewing experience (Dual PureCinema Progressive Scan**)
- Enjoy total immersive, uncompressed, high-resolution 6-channel surround sound (DVD-Audio/SACD)
- Achieve superior sound quality (Burr Brown PCM1738)
- Accurate gain and delay adjustment by DSP
- Revel in the very best picture quality, and easily adjust and save picture quality settings (Advanced Video Adjust)
- Hook up a compliant A/V receiver for high-quality digital audio transfer (Coaxial/Optical Digital Output)

* 'NSV', (Noise Shaped Video) is a registered trademark of ANALOG DEVICES, INC.
 ** Requires a compatible TV.

SUPERIOR AUDIO TECHNOLOGY

LEGATO LINK CONVERSION PRO

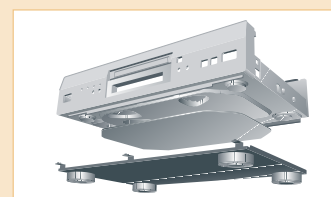
(DV-868AVi-S, DV-757Ai)

Legato Link was originally designed to alleviate the harshness of some CDs and create a more natural sound. Legato PRO is a new highly advanced filter with 4 adjustable settings, each of which contours the sound in a specific way, with varying effects depending on the music, the speaker's overall sound colour, and the sound environment. Use Legato Link Conversion PRO to choose a favourite digital filter setting and then experiment to find the effect that best highlights your favourite piece of music.

TRIPLE-LAYERED CHASSIS - WITH STABILITY COMES CRYSTAL CLEAR SOUND

(DV-868AVi-S, DV-668AV-S)

Chassis strength and stability are vital if you want to have clear, high-fidelity sound. That is why new DVD players, the DV-868AVi-S and DV-668AV-S, feature a triple-layered chassis. This innovative design absorbs unwanted internal and external vibrations for stable audio reproduction. Additionally, the stainless stabilising plate keeps the driving devices stable and drastically eliminates any undesirable interference caused by vibrations. Now you can achieve even more superb video and sound reproduction.



Triple-layered chassis design

SPEAKER MANAGEMENT AND DVD-AUDIO BASS MANAGEMENT (DV-868AVi-S, DV-757Ai, DV-668AV-S, DV-575A-S/K)

With first generation DVD-Audio players, you risked losing bass when you played DVD-Audio discs on a typical 5.1-channel home cinema system. Now Pioneer's DV-868AVi-S, DV-757Ai and DV-668AV-S DVD-Audio/Video/SACD players offer Full Bass Management Processing to overcome these difficulties. Advanced Bass Management means the system can low-pass any speaker to the subwoofer and then send the remaining frequencies to the speakers. All you need to do is indicate on the handy Graphical User Interface how many speakers there are and what size they are. The "Gain" feature ensures that the same sound level is sent to all the speakers, and the "Delay" feature allows you to hear the sounds from all the speakers at the right time even if you're not the same distance away from all of them.

Note: The speaker/bass management and gain/delay adjustments apply when using the 5.1-channel analogue audio outputs.

DV-575A-S/DV-575A-K

DVD-Audio/Video/SACD Player

NEW

RW
COMPATIBLESACD
DVD-Audio

DV-575A-S**

DivX® Video

DV-575A-K**

- Enjoy total immersive, uncompressed, high-resolution 6-channel surround sound (DVD-Audio/SACD)
- Play back full-screen, full-motion DivX®* movies on your TV (DivX® Video Playback/Official DivX® Certified Product)
- Get the very best picture quality, as close as possible to the DVD source (108 MHz/12-bit Video D/A Converter)
- Revel in the very best picture quality, and easily adjust and save picture quality settings (Video Adjust)
- Hook up a compliant A/V receiver for high-quality digital audio transfer (Coaxial/Optical Digital Output)
- No more sore eyes from movie marathons — the DV-575A offers you a flicker-free, cinematographic viewing experience (Dual PureCinema Progressive Scan***)
- Play back your home-recorded MP3 or WMA music files on CD-R/CD-RW/CD-ROM discs, and view your digital still JPEG photographs as well
- Stylish and slim, the 5.5 cm high DV-575A blends in with every décor, and its design perfectly matches Pioneer's slim receivers
- Environment-friendly and energy-saving, with ultra-low standby power consumption (0.12 W)

* DivX is a trademark of DivX Networks, Inc.

** Official DivX® Certified product. Plays DivX® 5, DivX® 4, DivX® 3, and DivX® VOD video content.

*** Requires a compatible TV.



SUPER AUDIO CD

DVD-AUDIO/SACD FOR CRYSTAL CLEAR SOUND (DV-868AVi-S, DV-757Ai, DV-668AV-S, DV-575A-S/K)

Super Audio CD offers listeners high resolution audio in either 2-channel stereo or multi-channel audio. Using the digital audio technology called Direct Stream Digital (DSD), SACD discs capture every nuance of the source material to produce a true reproduction without loss or omission of naturally occurring sounds.



With a frequency range well beyond the average CD, DVD-Audio immerses the listener in 6-channel high-resolution, high definition surround sound of unprecedented fidelity. Like DVD-Video, DVD-Audio discs can carry a variety of additional visual information such as artist bios, lyrics and performance notes. DVD-Audio discs sometimes include "bonus" music videos, too.

**DivX® VIDEO PLAYBACK FOR COMPRESSED DIGITAL VIDEO** (DV-575A-S/K, DV-470-S/K)

Join the stream towards everyday use of popular technology — the innovative patent-pending DivX® from DivX Networks, Inc.* is a new format for digital video, in the same way that MP3 is a format for digital music.

* DivX is a trademark of DivX Networks, Inc.

MP3

COMPRESSED AUDIO COMPATIBILITY - FOR EVEN MORE ENTERTAINMENT

All Pioneer DVD players are capable of reading MP3 files recorded onto CD-R or CD-RW discs.

Pioneer's DV-575A-S/K, DV-470-S/K, DV-370-S/K and DV-2750-S DVD-Video players can also play back WMA files recorded on CD-R/CD-RW discs.



Note: Some discs may not be playable due to different recording formats or physical conditions of the disc at the time of recording or playback. Please see the owner's manual for further information.

Note: Microsoft, Windows Media and Windows logo are trademarks, or registered trademarks of Microsoft Corporation in the United States and/or other countries.

DV-470-S/DV-470-K

DVD-Video Player

NEW

RW
COMPATIBLE

DivX® Video



DV-470-S**



DV-470-K**

- Play back full-screen, full-motion videos DivX® movies on your TV (DivX® Video Playback/Official DivX® Certified Product)
- Get the very best picture quality, as close as possible to the DVD source (108 MHz/12-bit Video D/A Converter)
- Revel in the very best picture quality, and easily adjust and save picture quality settings (Video Adjust)
- Hook up a compliant A/V receiver for high-quality digital-audio transfer (Coaxial/Optical Digital Output)
- No more sore eyes from movie marathons — the DV-470 offers you a flicker-free, cinematographic viewing experience (Dual PureCinema Progressive Scan***)
- Play back your home-recorded MP3 or WMA music files on CD-R/CD-RW/CD-ROM discs, and view your digital still JPEG photographs as well
- Stylish and slim, the 5.5 cm high DV-470 blends in with every décor, and its design perfectly matches Pioneer's slim VSX-C402 A/V receiver
- Environment-friendly and energy-saving, with ultra-low standby power consumption (0.12 W)

* DivX is a trademark of DivX Networks, Inc.

** Official DivX® Certified product. Plays DivX® 5, DivX® 4, DivX® 3, and DivX® VOD video content.

*** Requires a compatible TV.

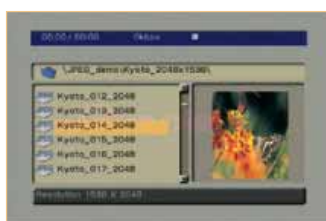


Photo Browser on-screen display

JPEG VIEW AND DISPLAY, WITH JPEG PHOTOVIEWER

PhotoViewer (DV-575A-S/K, DV-470-S/K, DV-370-S/K, DV-2750-S)

JPEG PhotoViewer*, available in Pioneer's new DVD players, is a fun way to display your prized photos in their full magnificence on-screen — perfect for parties or family gatherings. Simply load your CD, CD-R or CD-RW disc containing JPEG pictures into your DVD player to start the slide show. It's easier than ever, with improved on-screen graphics and new functions. You can rotate the angle and zoom in at 2 or 4 times. Finding the picture you want is a snap with the Disc Navigator or Photo Browser with a thumbnail image. Use the cursor buttons to select the picture you want, press Enter, and the slide show will begin!

* JPEG file compatibility: this player is compatible with FUJICOLOR CD and KODAK Picture CD formats, as well as CD-R/CD-RW/CD-ROMs containing JPEG files.



Advanced Disc Navigator with moving thumbnails

ADVANCED DISC NAVIGATOR (DV-575A-S/K, DV-470-S/K, DV-370-S/K, DV-2750-S)

Finding that exact recording you are looking for has never been so simple or so fast. The new Disc Navigator with improved response time featured on the new DVD players, allows you to just select a thumbnail image to see the corresponding title or chapter play in the thumbnail frame, with sound playback, so you can quickly and easily recognise the programme you're looking for.

DV-370-S/DV-370-K

DVD-Video Player

NEW

RW
COMPATIBLESLIM
& stylish

DV-370-S



DV-370-K

DV-2750-S

DVD-Video Player

NEW

RW
COMPATIBLESLIM
& stylish

DV-2750-S



- No more sore eyes from movie marathons — these DVD players offer you a flicker-free, cinematographic viewing experience (Dual PureCinema Progressive Scan*)
- Stylish and slim, these 5.3 cm high DVD players blend in with every décor
- Get the most out of your favourite movies, with state-of-the-art picture quality (54 MHz/12-bit Video D/A Converter)
- Play back your favourite movies recorded on DVD-R/DVD-RW, including DVD-RW discs recorded in 'VR Mode (DVD Video Recording Mode)'
- Play back your home-recorded MP3 or WMA music files on CD-R/CD-RW/CD-ROM discs, and view your digital still JPEG photographs as well
- Use the easy and convenient Advanced Disc Navigator with moving thumbnails to find the exact scene you need (Advanced Disc Navigator)
- Choose from various equalizer sound fields to recreate different listening environments in your lounge, from Rock to Classic (7 DSP modes)
- For easy connection and high-quality picture performance, hook your DVD player up to your TV via Euro-SCART (Euro-SCART with RGB)
- Environment-friendly and energy-saving, with ultra-low standby power consumption (0.12 W)

* Requires a compatible TV.



Original Signal



Dual PureCinema Progressive Scan

DUAL PURECINEMA PROGRESSIVE SCAN FOR PAL/NTSC

Pioneer's DVD players feature Dual PureCinema Progressive Scan video output for both PAL and NTSC-type televisions, allowing you to enjoy your favourite movies with high-quality images. Dual PureCinema Progressive Scan reproduces images which are true to the signals of cinema film format recorded on DVD discs. The Dual PureCinema Progressive Scan (PAL/NTSC) feature works by effectively doubling the scanning rate of the picture, resulting in a very stable, flicker-free "cinematographic" viewing experience.

MORE GREAT DVD PLAYERS FEATURES

EQUALIZER (PIONEER DSP MODES)

(DV-370-S/K, DV-2750-S)



Equalizer mode

The latest DVD-Video players, DV-370-S and DV-2750-S, are also equipped with a new Equalizer Mode. In this mode, you can choose between various equalizer sound fields: Off, Rock, Pop, Live, Dance, Techno, Classic or Soft to match your own personal taste.

DVD-RW PLAYBACK WITH CPRM COMPATIBILITY

Pioneer DVD players can play back DVD-R and DVD-RW discs recorded in 'Video Mode (DVD Video Mode)'. They can also handle discs recorded in DVD 'VR Mode (DVD Video Recording Mode)' and they are compatible with CPRM. CPRM is a content protection method for recording "copy once" broadcast programmes. CPRM stands for "Content Protection for Recordable Media". When a recorder is CPRM compatible, it means you can record copy-once TV broadcast programmes but won't be able to make further copies of those recordings. CPRM recordings can only be made on CPRM-compliant DVD-RW discs formatted in "Video Recording (VR) Mode", and CPRM recordings can only be played on players that are specifically compatible with CPRM.

Note: DVD players that have this indication can play DVD-RW discs recorded in 'VR Mode (DVD Video Recording Mode)' and of course DVD-R and DVD-RW discs recorded in 'Video Mode (DVD Video Mode)'.



Example of Video Adjust display (DV-575A-S/K, DV-470-S/K)

FINE-TUNE YOUR IMAGE WITH VIDEO ADJUST

(DV-868AVi-S, DV-757Ai, DV-668AV-S, DV-575A-S/K, DV-470-S/K)

Pioneer's Video Adjust function is the key to picture-perfect video images. Simply navigate to the on-screen Video Adjust display from the Home Menu, and use the cursor buttons to select picture quality settings and save them to a preset*. You can dedicate those presets to favourite films or genres, and recall them at your convenience. Your video images will always appear just the way you like it. Use one of three pre-defined video settings to match your video playback system, i.e. a regular TV, plasma display or professional video monitor. Or you can establish your own fine-tuned video adjustments, and create up to three personalised 'Memory' presets.

* Preset function not available on DV-575A-S/K and DV-470-S/K.

EURO-SCART WITH RGB

All Pioneer DVD players have a Euro-SCART terminal. This means you will only need one cable to connect the audio and video signal between your DVD player and your Euro-SCART TV. Depending on the TV's capabilities, you can select the best matching output quality between composite Video, S-Video and RGB.

ENVIRONMENT-FRIENDLY, ENERGY-SAVING DESIGN

(DV-575A-S/K, DV-470-S/K, DV-370-S/K, DV-2750-S)

Pioneer DVD players are environmentally friendly. In standby mode, they use only 0.12 W of power. They also feature a power-off function which switches the DVD Player off, when it has been idle for 30 minutes.

	DV-868AVi-S	DV-757Ai	 DV-668AV-S	DV-575A-S/K	DV-470-S/K	DV-370-S/K	DV-2750-S
HDMI/Two-Dimensional Resolution Expander	✓	—	✓	—	—	—	—
i.LINK	✓	✓	—	—	—	—	—
Dual PureCinema Progressive Scan	✓	✓	✓	✓	✓	✓	✓
Video D/A Converter	216 MHz/14-bit	108 MHz/12-bit	216 MHz/12-bit	108 MHz/12-bit	108 MHz/12-bit	54 MHz/12-bit	54 MHz/12-bit
DVD-Audio/SACD	✓	✓	✓	✓	—	—	—
DivX® Video Playback	—	—	—	✓	✓	—	—
Coaxial/Optical Digital Output	✓/✓	✓/✓	✓/✓	✓/✓	✓/✓	✓/—	✓/—
Video Adjust/Video Quality Enhancer	✓/ VQE8	✓/ VQE7	✓/ VQE8	✓/ —	✓/ —	—/ —	—/ —
Height	10.9 cm	9.5 cm	10 cm	5.5 cm	5.5 cm	5.3 cm	5.3 cm
Euro-SCART with RGB	✓	✓	✓	✓	✓	✓	✓
MP3/WMA/JPEG	✓/ — / —	✓/ — / —	✓/ — / —	✓/ ✓/ ✓	✓/ ✓/ ✓	✓/ ✓/ ✓	✓/ ✓/ ✓
Advanced Disc Navigator with moving thumbnails	—	—	—	✓	✓	✓	✓
DVD-R/DVD-RW Compatible	✓/✓	✓/✓	✓/✓	✓/✓	✓/✓	✓/✓	✓/✓
Equalizer [7 DSP Modes]	—	—	—	—	—	✓	✓

For full features and specifications, please see pages 86 — 87.