

Nikon Digital Camera COOLPIX 5600/4600 Specifications

Type:	Digital camera E5600/E4600
Effective pixels:	5.1 million (E5600)/4.0 million (E4600)
CCD	E5600: 1/2.5-inch type (5.36 million total pixels) / E4600: 1/2.5-inch type (4.23 million total pixels)
Image modes:	E5600: High (2592*), Normal (2592), Normal (2048), PC (1024), TV (640) / E4600: High (2288*), Normal (2288), Normal (1600), PC (1024), TV (640)
Lens:	E5600: 3x Zoom-Nikkor; 5.7-17.1mm [35mm (135) format equivalent to 35-105mm]; f/2.9-4.9; 7 elements in 6 groups / E4600: 3x Zoom-Nikkor; 5.7-17.1mm [35mm (135) format equivalent to 34-102mm]; f/2.9-4.9; 7 elements in 6 groups; Digital zoom: up to 4x
LCD monitor:	1.8-inch type, 80,000-dot Amorphous silicon TFT LCD monitor with brightness adjustment
Storage media:	Internal memory: approx. 14MB, SD memory card
Shooting modes:	Auto, Scene Assist (Portrait, Landscape, Sports, Night portrait), Scene (Party/Indoor, Beach/Snow, Sunset, Dusk/Dawn, Night landscape, Close up, Museum, Fireworks show, Copy, Back light, Panorama assist, Underwater), BSS (Best Shot Selector), Blur Warning, Date imprint, Self-timer (10 sec.)
Movie:	E5600: with sound / E4600: without sound; TV movie (640) at 15fps, Small size (320) at 15fps, Smaller size (160) at 15fps
Capture modes:	1) Single, 2) Continuous (1.3fps; up to 3 frames), 3) Multi-shot 16 (16 frames 1/16 in size)
Number of frames:	E5600 (5M): (w/ Internal memory): High (2592*) approx. 5, Normal (2592) approx. 10 / E4600 (4M): (w/ Internal memory): High (2288*) approx. 7, Normal (2288) approx. 14
Built-in Speedlight:	Range: 0.4-3.3m / 1.3 - 10.8 ft. (W), 0.4-2.0m / 1.3 - 6.6 ft. (T); Flash modes: Auto, Auto with Red-eye Reduction (In-Camera Red-Eye Fix), Anytime Flash, Flash Cancel and Slow sync.
Interface:	USB
Supported languages:	German/English/Spanish/French/Italian/Dutch/Swedish/Japanese/Simplified Chinese/Traditional Chinese/Korean selectable in menu display
Power requirements:	Two EN-MH1 Rechargeable batteries, two LR6 (AA-size alkaline) batteries, two ZR6 (AA-size nickel manganese) batteries, two FR6 (AA-size lithium) batteries
Battery life (approx.):	E5600: 220 images with two AA-size alkaline batteries, 340 images with two EN-MH1 Rechargeable batteries/ E4600: 230 images with two AA-size alkaline batteries, 360 images with two EN-MH1 Rechargeable batteries (based on CIPA standard*)
Dimensions (W x H x D):	Approx. 85 x 60 x 35mm (3.3 x 2.4 x 1.4 in.)
Weight:	Approx. 130g (4.6 oz.) (without battery and memory card)
Supplied Accessories:†	Strap, USB cable, Audio Video cable (E5600), Video cable (E4600), Rechargeable Ni-MH Battery EN-MH1-B2, Battery charger MH-71, PictureProject CD-ROM
Optional Accessories:	AC adapter EH-62B, Ni-MH Rechargeable Battery EN-MH1-B2, Battery Charger MH-71, Soft case, Waterproof case WP-CP3‡

*Industry standard for measuring life of camera batteries. Measured at 25°C (77°F); zoom adjusted with each shot, built-in Speedlight fired with every other shot, image mode set to Normal.
 †Supplied accessories may differ by country or area.
 ‡ Not available in some countries or areas.

PictureProject System Requirements

OS	Macintosh: Mac® OS X (10.1.5 or later)/ Windows: Windows® XP Home Edition / Professional, Windows® 2000 Professional, Windows® Me, Windows® 98SE pre-installed models
RAM	64MB (128MB with RAW images) or more recommended
Hard disk	60MB required for installation
Display	800 x 600 or larger with 16-bit color (full color recommended)
Others	CD-ROM drive required for installation Only built-in USB ports are supported

Microsoft® and Windows® are either registered trademarks or trademarks of Microsoft Corporation in the United States and/or other countries. Macintosh® and QuickTime® are either registered trademarks or trademarks of Apple Computer Inc. in the United States and/or other countries. The FotoNation logo is a trademark. The SD logo is a trademark. PictBridge is a trademark. D-Lighting technology is provided by Apical Limited. Products and brand names are trademarks or registered trademarks of their respective companies. Images on LCDs and monitors shown in this brochure are simulated. Sample images taken with the COOLPIX 5600. Some photos shot on location at La Vista Golf Resort.

Specifications and equipment are subject to change without any notice or obligation on the part of the manufacturer. January 2005 ©2005 NIKON CORPORATION



WARNING TO ENSURE CORRECT USAGE, READ MANUALS CAREFULLY BEFORE USING YOUR EQUIPMENT. SOME DOCUMENTATION IS SUPPLIED ON CD-ROM ONLY.



NIKON CORPORATION

Fuji Bldg., 2-3, Marunouchi 3-Chome, Chiyoda-ku,
 Tokyo 100-8331, JAPAN
<http://nikonimaging.com/>

En



At the heart of the image

DIGITAL CAMERA COOLPIX 5600 4600



**Compact and Lightweight
 3x Optical Zoom-Nikkor Lens
 16 Scene Modes**



COOLPIX 5600
 5.1 effective megapixels



COOLPIX 4600
 4.0 effective megapixels

“My first digital camera. My first special friend.
That’s just the picture I wanted!”



All the clarity, all the fun...for all generations.



Nikon makes it easy for anyone to
take great pictures!

The new COOLPIX 5600 and COOLPIX 4600 from Nikon are so easy to operate, even total beginners can be proud of their pictures. With a powerful 3x Zoom-Nikkor lens, each shot is super sharp. And with 5.1 and 4.0 megapixels, you can be assured of new levels of quality.



COOLPIX 5600
5.1 effective megapixels



COOLPIX 4600
4.0 effective megapixels

“My first digital camera. My first beautiful baby.
That’s just the picture I wanted!”

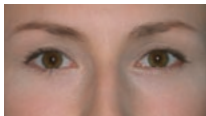


**When it comes to unique moments,
you need a camera you can rely on.**
Even when shots aren’t quite right, handy features let you
fix them in-camera.



Nikon D-Lighting

Grasp the moment as it happens, then improve exposure later.



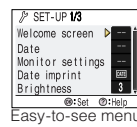
Fix red eyes in a blink.

Nikon’s In-Camera Red-Eye Fix function automatically detects and corrects red eye effects caused by flash, in-camera.



Simple control at your fingertips!

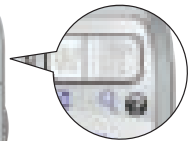
An easy-to-see menu (available in 11 languages) lets you select by name or by icon, while a handy HELP button is always there if you don’t have time to read the manual. A range of Scene Modes lets you take control to produce great pictures, just select the one that fits the scene for satisfying results.



Easy-to-see menu



HELP button



**Lower power consumption
means longer battery life.**

With alkaline batteries, the COOLPIX 5600/4600 take up to 220 and 230 images respectively. And with Ni-MH batteries, the COOLPIX 5600/4600 take up to 340 and 360 shots respectively.*

* According to CIPA data.



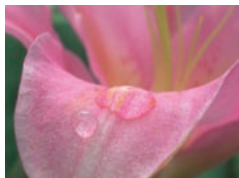
"My first digital camera. My first great-looking shot. That's just the picture I wanted!"



An excellent range of features for pleasing camera performance.



Night Landscape Mode
Capture evening colors like an expert.



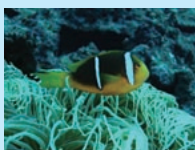
Macro Mode
Take pictures from as close as 4cm.

Scene Modes with Scene Assistance

Portrait **Landscape** **Sports** **Night portrait**

Other Scene Modes

- | | | | |
|----------------|-----------------|----------------|-----------------|
| Party / Indoor | Dusk / Dawn | Museum | Back light |
| Beach / Snow | Night landscape | Fireworks show | Panorama assist |
| Sunset | Close up | Copy | Underwater |



Underwater shooting

Dive deeper into digital fun with the new Underwater Scene Mode and waterproof case WP-CP3.*

* Not available in some countries or areas.

Beginners welcome.

You don't need to be an expert to get expert results.

Large internal memory

14MB of internal memory lets you shoot even without an SD card.



PictBridge

Direct print capability lets you print without a computer.



Smooth movies

Record movies at 15 frames per second, then hook up to a TV to let everyone see.



Color Options

Add extra mood to your photographs, with 5 different Color Options.



Cyanotype



Vivid color

PictureProject

Edit, organize and share images with Nikon's easy-to-use software.

