

Panasonic Consumer Electronics UK is a division of Panasonic UK Limited. Panasonic and Technics are brand names of Matsushita Electric Industrial Co. Ltd. The design and specification of products are constantly changing in the interest of improvement. Whilst every care has been taken in the preparation of this catalogue, some changes may not have been indicated and may have occurred after publication. Please check with your Panasonic dealer for details.

Panasonic UK Ltd cannot accept responsibility for errors and omissions.

MPEG layer-3 audio decoding technology licensed from Fraunhofer IIS and Thomson Multimedia.

Dolby and the double-D symbol are trademarks of Dolby Laboratories.

DTS and DTS Digital Out are trademarks of Digital Theatre Systems.

www.panasonic.co.uk  
PAV04



www.panasonic.co.uk

Information on the complete range of Panasonic consumer products is available on our web site where you can also buy direct a range of accessories and consumable items. You can also buy accessories and consumables by calling our Customer Care Centre - Tel: 08705 357357 Mon-Fri 09.00-17.30, if calling from the Republic of Ireland Tel: 01 289 8333. Most major credit and debit cards are accepted. All enquiries, transactions and deliveries are carried out by Panasonic - it couldn't be simpler.

Product Enquiries: For enquiries on Panasonic / Technics Audio Visual products please contact your local Panasonic or Technics dealer or call the Panasonic Customer Care Centre on 08705 357357 (Mon-Fri 09.00-17.30), if calling from the Republic of Ireland Tel: 01 289 8333.

Customer Care Centre - Panasonic UK Ltd. - Panasonic House, Willoughby Road, Bracknell, Berkshire RG12 8FP



#### PANASONIC EXTENDED GUARANTEES

All Panasonic products come with a 12 month guarantee. This will protect you against the cost of repair in the event of a failure due to manufacturing or design fault. To extend the guarantee period Panasonic have teamed up with Domestic & General (the UK's leading breakdown protection specialists) to offer you additional optional cover on a wide range of audio & visual products.

Extended guarantees may be purchased in a variety of ways:

- By completing the form supplied in the carton box with each new product
- Through Authorised Panasonic dealers
- Registering your purchase on-line at [www.panasonic.co.uk/guarantee](http://www.panasonic.co.uk/guarantee)
- By contacting Domestic & General direct on 0870 240 6284

# Panasonic

AUDIO VISUAL MAGAZINE | 2004

**VIERA**  
THE LATEST IN PLASMA AND  
LCD TELEVISIONS

**DIGA**  
THE NEW RANGE OF  
DVD RECORDERS



**D-SNAP**  
THE INCREDIBLE  
MULTI-MEDIA DEVICES



**Panasonic**  
ideas for life





**00:12**  
Just can't stop watching  
PAGE 031



**09:37**  
See yourself in the Big Picture  
PAGE 042



**10:54**  
Watching the programme  
you made yourself  
PAGE 062



**11:57**  
The next hours are all  
entertainment in style  
PAGE 058



**14:00**  
Like to step into another  
world for short while  
PAGE 072



**23:22**  
Relaxing with my  
favourite CD  
PAGE 104



**18:13**  
Checking todays footage  
PAGE 086



**16:41**  
Never seen you any better  
PAGE 094

**Panasonic**  
ideas for life

004-009  
010-011  
012-013  
014-015

## EDITORIAL

DIGITAL NETWORKING  
FORMULA 1  
LUMIX AWARDS  
ENVIRONMENT ISSUES / OLYMPICS

016-027

## DIGITAL HOME CINEMA SYSTEMS

COMPOSING HOME CINEMA SYSTEMS

028-029  
030-041  
032-033  
034-037  
038-041  
042-043  
044-055  
044-047  
046-049  
050-055

## VISUAL

PLASMA PANELS  
VIERA / T[tau] PLASMA AND LCD  
SPECIAL FEATURES  
VIERA PLASMA / LCD TV  
LCD TELEVISIONS  
PROJECTORS  
TELEVISION  
SPECIAL FEATURES  
IDTV  
COLOUR TELEVISIONS

056-057  
058-061  
058-059  
060-061  
062-071  
064-067  
068-071  
072-081

## HOME AUDIO/VIDEO

VIDEO TAPE RECORDERS  
DVD PLAYERS  
SPECIAL FEATURES  
PORTABLE / HOME DVD PLAYERS  
DIGA DVD RECORDERS  
SPECIAL FEATURES  
DIGA DVD RECORDER RANGE  
DIGITAL HOME CINEMA SYSTEMS  
AND COMPONENTS

082-085  
082-083  
084-085  
086-093  
086-087  
088-091  
092-093  
094-101  
096-097  
098-101  
102-103  
104-105  
106-107  
108-109

## PERSONAL AUDIO/VIDEO

LUMIX DIGITAL STILL CAMERAS  
SPECIAL FEATURES  
LUMIX DIGITAL STILL CAMERA RANGE  
DIGITAL VIDEO CAMERAS / RAM CAMCORDERS  
SPECIAL FEATURES E.CAM  
DIGITAL VIDEO CAMERA RANGE  
SPECIAL FEATURES RAM CAM AND RANGE  
D-SNAP  
SPECIAL FEATURES  
D-SNAP RANGE  
E.WEAR  
PORTABLE CDS  
PERSONAL STEREOS  
CD RADIO CASSETTE PLAYERS /  
RADIO CASSETTE PLAYERS / DAB RADIO  
RADIO / CLOCK RADIO RANGE  
IC RECORDER / TAPE RECORDERS

110-111  
112-113

## EXTRAS

HEADPHONES  
DECT TELEPHONES / FAX MACHINES  
CAR ELECTRONICS / RECORDING MEDIA /  
AUDIO ACCESSORIES  
VISUAL ACCESSORIES  
TECHNICAL SPECIFICATIONS

114-115  
116-117  
118-119  
120  
121-139



# DIGA

**THERE WAS A TIME WHEN HOME TECHNOLOGY PRODUCTS SAT IN THEIR OWN CORNERS AND DELIVERED LIMITED FUNCTIONALITY. TODAY, THANKS TO PANASONIC DIGITAL NETWORKING, WE HAVE A FAMILY OF MULTI-TASKING COMPONENTS THAT OFFER COMPATABILITY, EASE OF USE & JAW-DROPPING PERFORMANCE. WELCOME TO A WORLD WHERE THE MACHINES HELP YOU GET THE MAX FROM YOUR LIFE**



## WITH D-SNAP

**TRANSFER MPEG4 VIDEO TO AN SD CARD FOR VIEWING WITH THE SV-AV100. WATCH YOUR RECORDINGS TAKEN WITH THE SV-AV100 IN MPEG 2 / MPEG 4 ON TV.**



DIGITAL NETWORKING | DIGA



## WITH DIGA DVD VIDEO CAMERA

**EASILY EDIT YOUR RECORDINGS WITH THE DIGA DVD RECORDER**



## WITH E.CAM

**TRANSFER YOUR DIGITAL VIDEOS ONTO THE HARD DISK OR A DVD**

## YOUR MOVIES, YOUR WAY.

**With the DIGA DVD Video Recorders and ECAM Digital Video Camera, Panasonic has created a formidable alliance. Shooting your own movies and producing unique DVDs has never been easier thanks to each product's Digital Networking capabilities. Each machine easily synchronises with the other and each is simple and intuitive to use. First record onto DVD then just connect your camera and DIGA can display your footage as easy-to-view thumbnails. Just highlight the ones you want, edit or move them and record straight onto DVD.**

What is a Digital Network? It is technology for humans. It features a variety of unique products that work with each other perfectly, beautifully and easily. DVD players, DVD recorders, digital surround receivers, flat screen TVs, digital cameras, digital camcorders... these are just some of the cutting-edge components you can use to build a Digital Network. When it comes to performance, Panasonic digital technologies have, for example, given us pictures on a flat screen display that look incredibly real; we hear room-filling music that has the power, clarity and accuracy of a live performance. But has this better performance come at a price? Does it mean ever-complicated products that are increasingly difficult to use? No way! Panasonic products are simple to use. Clever ergonomics result in intuitive and

logical button layout while handy graphic interfaces guide the user through every step of the way. Our aim is not to make man a slave to technology. Instead, you are the master of the machines. And that's where a Digital Network comes in. A DIGA DVD Video recorder can form the heart of a Digital Network. Each model in the DIGA range is a multi-function device that lets you create, record and view.

For example, use a DVD Video recorder as the hub of your home entertainment network. From playing back high quality music to experiencing DVD movies in a digital home cinema system, our DIGA recorders are truly versatile. Even more so when you consider that they'll playback a variety of disc formats including DVD-RAM, DVD-R, DVD-Video, DVD-Audio (2-channel), CD, CD-RWs and CD-Rs. They'll even playback discs encoded with MP3 audio.

A Panasonic DVD Video recorder is a powerful creative tool where playback is just the tip of the iceberg. You can forget about the hassles of videotape – our recorders use blank DVD-RAM or DVD-R discs. There's no winding, no loss of quality and no rocket science. Just choose what you want to record and record it. Some DIGA models even feature built-in hard drives for really long recording capacities (up to 142 hours depending on the model). What you record is up to you: capture off-air TV broadcasts for viewing later; make your own movies by hooking-up a DV camera to upload your footage onto disc; create unique DVD photo albums by downloading JPEGs from a digital camera onto the recorder ... with Panasonic, all this and much more is possible.

## CREATE YOUR OWN PHOTO ALBUMS: DIGA lets you makes

**digital photo albums with minimum fuss and no waiting around. Just take the SD Memory Card from your Panasonic Lumix digital camera, insert it into the PC card slot on the front of a Panasonic DVD Recorder and transfer the images you need directly onto DVD-Ram. And with DIGA recorders with built-in hard drives, you can store, arrange and archive all your JPEGs for retrieval later on.**

But the great thing about creating a video masterpiece is sharing it. A Digital Network is all about expanding capabilities. Recordings made on DVD-R can be played back on almost any conventional DVD-Video player. That gives Panasonic DIGA DVD Video recorders the widest compatibility. Meanwhile, recordings made using DVD-RAM discs can be played back on any suitable DVD player and some Panasonic DVD recorders even feature SD Memory Card slots. That means you can transfer your movies or pictures onto SD for playback in a compatible device such as the D-Snap range of products. (See page 10). Or vice versa, you can transfer recordings on MPEG2 saved on SD card from your SV-AV100 to your DIGA DVD recorder for playback, editing and/or transferring to DVD format.

## WITH LUMIX

**VIEW YOUR DIGITAL PHOTOS ON TV AND CREATE YOUR OWN ALBUM ON HARD DISK OR DVD RAM DISC.**



## WITH PC

**USE A DVD-RAM FOR EDITING, ARRANGING, PLAYING, STORING, ATTACHING TO E-MAIL, UPLOADING TO WEBSITES ...**



# VIERA

**YOUR PERCEPTION OF TELEVISION IS ABOUT TO CHANGE. PANASONIC FLAT PANEL DISPLAYS HAVE ALWAYS BEEN THE ULTIMATE AV ASPIRATION. BUT NOW, WE'VE CREATED A NEW GENERATION OF PLASMAS & LCDS WHICH REPRESENT THE PERFECT BLEND OF SCIENCE & ART. YOU'RE WITNESSING A WHOLE NEW VISUAL ERA: VIERA.**

beyond borders.



DIGITAL  
NETWORKING

VIERA



## VIERA LCD TELEVISIONS

BEYOND THE CONVENTIONAL TO  
A WORLD BEYOND IMAGINATION

VIERA represents the pinnacle of TV evolution. Within an amazingly thin and lightweight body, each VIERA design features everything you'll need to enhance your viewing experience. It is an AV concept that defies convention and exceeds all technological, aesthetic and performance boundaries. In short, VIERA is TV unlike you've ever seen, watched, or heard before.

With VIERA as the hub of Digital Network, you'll have an entertainment system that sets a new benchmark in AV picture quality. This has been made possible thanks to Panasonic's extensive research and deep understanding of how humans perceive visual objects.

The result? VIERA features a newly-developed panel driver which is optimised for flat panel devices like plasmas and LCDs. This enables brilliant, high contrast images with rich gradation and remarkable depth.

VIERA therefore provides the perfect technological match for Panasonic Digital Networking products. For example, combine a VIERA display with a DIGA DVD Recorder and you instantly have a powerful entertainment network: view high quality television broadcasts and record them instantly onto DVD.

But we didn't stop there. At Panasonic, we know that creating the ultimate TV isn't just about improving picture quality. It's about great sound, too and VIERA's new Smart Sound Speaker System will dramatically change the way you listen to TV sound.

VIERA is so versatile that you can use it in any kind of AV set-up. Smaller displays can be used for more compact systems. In fact, these VIERA displays are so light and portable that you can easily move them from room-to-room for cinema anywhere!

As well as being light, VIERA displays are also ultra-slim – slim enough to easily hang on your wall just like a picture. Wherever you choose to use your VIERA, one thing will be for sure: it's going to get people talking. In VIERA, Panasonic has created a fresh design that is beyond the reach of traditional TV aesthetics.

The power to create lies at the very heart of VIERA. Built-in SD/PC card slots mean that there's no need to fiddle around connecting cables and devices to your TV – simply take the PC Memory card, such as the SD card from a D-SNAP AV device, Lumix digital camera, DIGA DVD recorder, etc, insert it into the VIERA, and you can instantly view your pictures.

No fuss or hassle – just a quick and convenient way to see your pictures on a large screen.

Panasonic has created the ultimate television experience. This new breed of flat screen displays has been crafted to give you a very unique and the very best in performance, functionality and design. This is TV for tomorrow that you can have today. This is VIERA.

**IS IT TECHNOLOGY OR IS IT ART?** It's both. With VIERA, the age of the 'black box' is dead. When you invest in Panasonic, you're making a statement in style. And for those who love great design and stunning aesthetics, our VIERA flat televisions are technological objects of desire that will enhance any home.

**UNLEASH YOUR CREATIVITY.** VIERA gives you more than just superb TV. It provides the starting point for the way we now entertain ourselves at home. For film-lovers, VIERA offers the perfect way to take advantage of high quality digital home cinema.

## VIERA PLASMA TELEVISIONS

BEYOND THE BORDERS OF CONVENTIONAL TV



### SD/PC CARD SLOT

SIMPLE HANDLING WITH SD CARD

# D-snap

**IF YOU LOVE GADGETS, YOU'LL LOVE PANASONIC'S D-SNAP RANGE OF PRODUCTS. THEY USE TINY SD MEMORY CARDS TO STORE DATA AND ARE SMALL ENOUGH TO FIT INTO A POCKET. NOW YOU'LL WANT TO CREATE & ENJOY MOVIES, PICTURES & MUSIC ANY TIME, ANY PLACE**



DIGITAL NETWORKING | **D-snap**



## SV-AV100

**A COMPACT, FEATURE-PACKED DIGITAL VIDEO CAMERA**

**THIS YEAR'S ESSENTIAL FASHION ICON D-SNAP** is THE gadget to be seen with! Small enough to fit into your bag or pocket and big enough to offer you movies, music and photos, each D-SNAP product is more than just a technical trinket. See something you like while you're out and about? Film it in an instant and share the moment later on with friends and family. Need to buy a present but can't decide which one? Photograph your shopping ideas on D-SNAP and get a second opinion. You'll soon discover that D-SNAP is as essential as your mobile phone.

D-snap is the ultimate in digital fun and represents a new style of communication. With a D-snap in your pocket, you can shoot video, take digital stills, listen to your favourite sounds, or even record voice memos wherever you go.

All D-snap products use SD Memory Cards so you can forget about videotapes or film when using them as cameras. Each model has a built-in screen which means that you can create your images and view them instantly on-the-spot. They're the perfect and stylish way to capture life as it happens!

The latest line-up of these must-have mini gadgets are now even better. Take the new SV-AV50 and SV-AV25, for

example. Each model can take beautiful digital stills thanks to an improved lens system. And these models now feature smoother video motion – ideal for recording fast-moving scenes such as sports events.

Panasonic D-Snap gives you the power to create pictures and movies wherever you are. But D-Snap isn't just about power. It's also about being cool. Whichever D-Snap you choose, you're sure to win admiring glances each time you use it. Take the new SV-AV50, for example. At first, this sleek and stylish metal case could be anything – but just press a button and out slides its lens and monitor. Now that's cool.

## MUSIC, MUSIC MUSIC...

D-SNAP's multi-functionality gives you powerful technology in the palm of your hand. As well as shooting digital movies and capturing digital stills you can also use some D-Snap's for enjoying music on the move. Simply store the tracks you want to listen to on an SD Memory Card, slip it into a suitable D-Snap and you'll have hours of big beats from a mini machine!

Who says size doesn't matter? For casual, every day snapping while you're out and about, the SV-AS10 will prove to be absolutely ideal. It's ultra slim, ultra light and about the same size as a credit card. And don't be fooled by those small

dimensions – this compact package is bursting features! The SV-AS10 gives you digital pictures, digital sound and digital voice recording all in the palm of your hand.

D-Snap gives you the freedom to create, record and view wherever you go. It's hi-tech cool in a pocket-sized package and each D-Snap device makes the ideal companion for any journey. It will prove to be a perfect partner to share life with.

**DON'T FORGET THE ONIONS!** Where's a pen and a piece of paper when you need one? With D-SNAP, you don't need to scribble down reminders on scraps of paper – just record a voice memo whenever you see or hear something that you'll need later on. D-SNAP will take care of important numbers, addresses – even that all essential ingredient for tonight's dinner...



## SV-AV50

**MANY PIXELS IN A SMALL FLEXIBLE METAL BODY**



## SV-AS10

**SUPER SLIM AND SUPER LIGHT SD MULTI-CAMERA**



## SV-AV25

**SD-AUDIO, STILL CAMERA, VOICE RECORDING AND JUKEBOX - ALL INCLUSIVE**

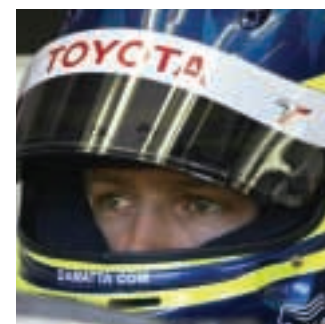




OLIVIER PANIS & CRISTIANO DA MATTA CONSULT THE DATA ON THEIR CF-29 TOUGHBOOK



THE HIGHLIGHT OF THE YEAR FOR ME WAS QUALIFYING IN THE TOP TEN IN TWELVE OUT OF THE SIXTEEN GRAND PRIX. OLIVIER PANIS



THE HIGHLIGHTS OF MY SEASON WERE LEADING THE BRITISH GP AND QUALIFYING 3RD IN SUZUKA. CRISTIANO DA MATTA



TEAM ENGINEER CHECKS DATA ON HIS CF50 TOUGHBOOK.



PIT CREW KEEP CLOSE TO THE ACTION WITH PANASONIC PLASMA DISPLAYS.



CRISTIANO SHOWS OFF HIS LATEST PICTURES ON HIS X70 MOBILE CAMERA

## THE PERFORMANCE ENHANCING TECHNOLOGY IDEA

### THE SEASON

There were a number of highlights during the 2003 season for the Panasonic Toyota Racing Formula One team. It led the British Grand Prix for 17 laps, qualified on the second row of the grid in two successive races in Indianapolis & Suzuka, and scored a double points finish in Hockenheim. Only in two races did the team not qualify in the top ten.

For 2004, Panasonic Toyota Racing aims to consistently battle with the leading teams, scoring points regularly and targeting its maiden podium finish.

### THE TECHNOLOGY

Panasonic powers the Toyota Formula One Team through audio-visual, IT and telecommunications technology. These Panasonic technologies help fulfil a vital function for the team personnel who

need equipment they can depend on. Which is why they use Panasonic LCD monitors and plasma screens in the garage. The engineers use the latest Panasonic CF50 toughbooks, which are ideal for the rugged environment of a formula one garage, whilst the latest Panasonic DVD Recorders with built in hard drive are also used to store race data. The drivers also take advantage of the technology to help them work, rest and play. Olivier and Cristiano both use the Dsnap SV-AV50 to record their favourite moments from the year, as well as the latest Panasonic mobile phones.

### THE DRIVERS

"The highlight of the year for me was qualifying in the top ten in twelve out of the sixteen grand prix. The team's consistency during the races is something we will work on for next year and hopefully

deliver some of our promise into podium challenging results." **Olivier Panis**

"The highlights of my season were leading the British Grand Prix and qualifying third in Suzuka. With the benefit of one year's more experience I think we have a good foundation upon which to build for next year and challenge more consistently." **Cristiano da Matta**

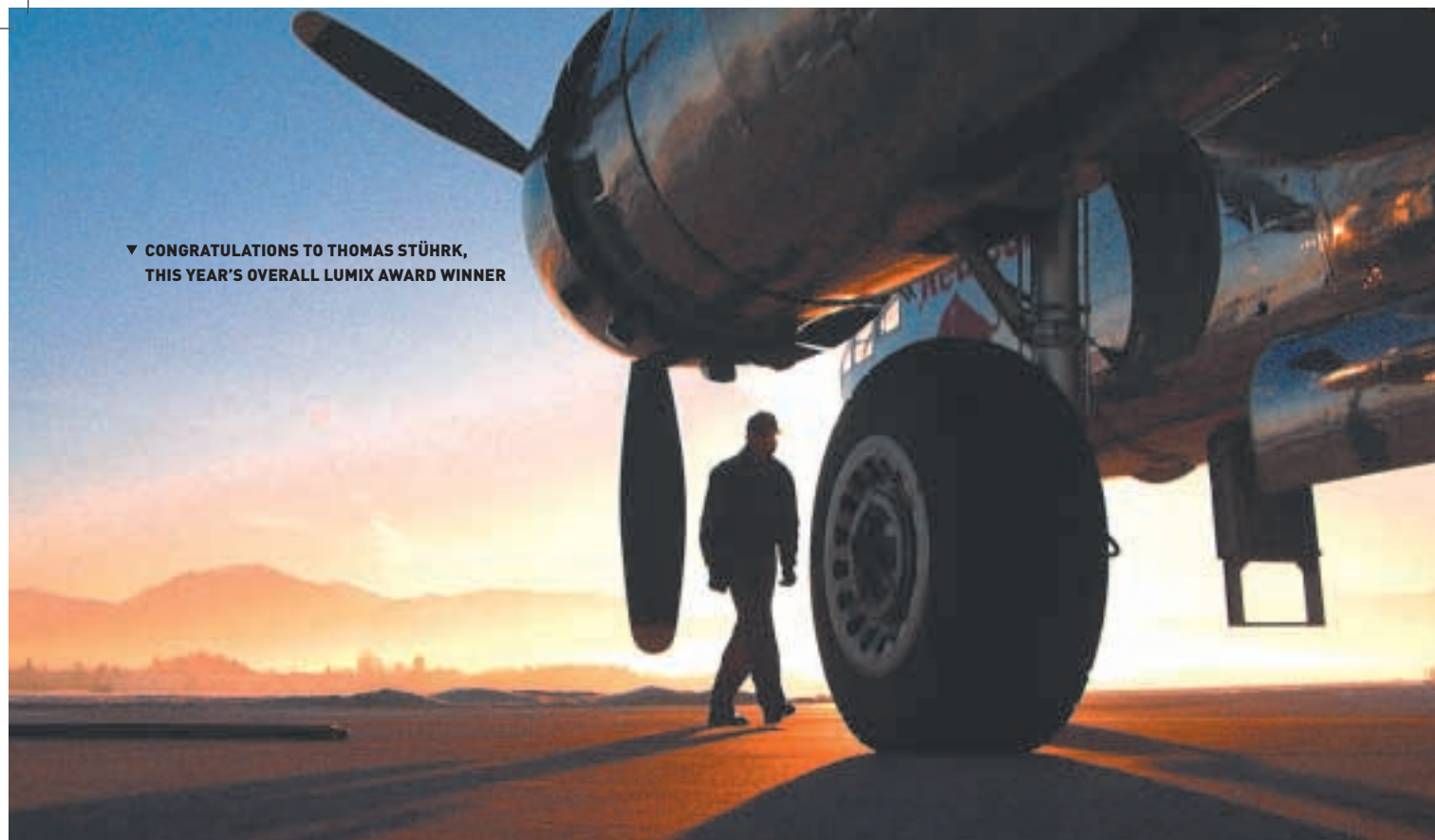
### WIN GREAT PRIZES ON THE PANASONIC RACING WEBSITE [WWW.PANASONIC-EUROPE.COM/RACING](http://WWW.PANASONIC-EUROPE.COM/RACING)

Visit the Panasonic racing website to see the drivers' D-snap video diaries and find out how you could also win exclusive prizes including the chance to meet the Cristiano & Olivier at a grand prix.





▼ CONGRATULATIONS TO THOMAS STÜHRK,  
THIS YEAR'S OVERALL LUMIX AWARD WINNER



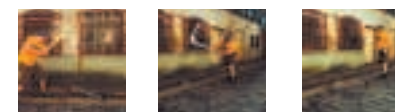
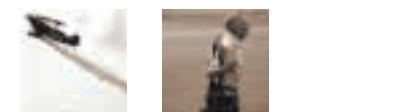
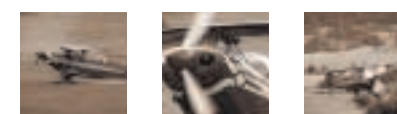
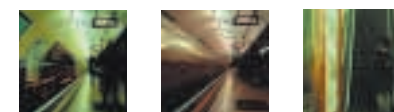
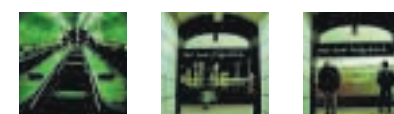
WWW.LUMIXAWARD.COM  
**LUMIX AWARD 2003**

**WINNERS** Congratulations to Thomas Stührk: Winner of the Single Image category and voted overall LUMIX Award Winner 2003.

Commenting on the jury's decision, Luis Castaneda, member of the ASMP and

**PRIZES** Overall Lumix Award winner, Thomas Stührk, wins a week's photographic workshop for two people organised by the prestigious photographic school theworkshops™. Each of the six category winners receives a Still Camera DMC-LC5 and a Tungsten T™ Handheld from Palm™.

▼ FROM LEFT TO RIGHT:  
NICK BOARD: CHARING CROSS  
OTTO NEUMANN: SKYDIVER  
ADAM SMITH: THE SCOOTER



**WINNERS OF THE LUMIX AWARD:  
JUDGING THE BEST IN  
DIGITAL PHOTOGRAPHY  
JUNE-NOVEMBER 2003  
THEME: MAN AND MACHINE**



LUMIX LC5



LUMIX FZ1



TUNGSTEN T™

▼ REINER FELSMANN: FERNSTEUERUNG



▼ VOLKER GEHRMANN: TV LANDSCAPE



Gruppo Fotografico Leica, and member of the panel of judges for the Lumix Award, said: "The visual impact of this exquisitely composed photograph is one of its most important features. Not only are all the elements placed in a logical place, but it dramatically reflects the theme selected for this competition: Man and Machine." Thomas Stührk was delighted with his "unexpected Christmas present". He added: "I never thought I would win a Lumix award, but I'm very proud that I shot the winning image with my LUMIX camera a bit of luck and a perfect surrounding. I'm looking forward to the workshop and I hope to get a lot of interesting views and information."

The winners / Single Image  
1st place: **Thomas Stührk**  
2nd place: **Reiner Felsmann**  
3rd place: **Volker Gehrmann**

The winners / Multiple Image  
1st place: **Nick Board**  
2nd place: **Otto Neumann**  
3rd place: **Adam Smith**

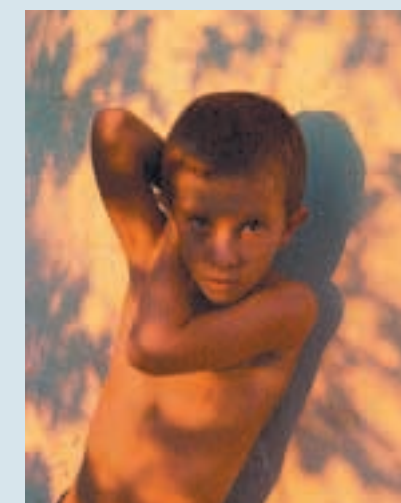
Each of the monthly winners receives a LUMIX Digital Still Camera DMC-FZ1 and a Tungsten T™ handheld from Palm™.

#### THE 2002 LUMIX AWARD WINNER

Mishca Fulljames, 2002's Grand Prize winner, won participation in the prestigious Rob Goldman photographic workshop held in Tuscany, Italy. "I was so inspired by the experience, which involved deep reflection into the reasons why I take photographs, bringing out the essence of myself and exploring it in the images I capture."

#### THE LUMIX AWARD

The Lumix Award aims to showcase the creativity associated with digital photography. The unique features of digital cameras allow you to throw off the restrictions of conventional film and introduce you to a whole new way of taking photographs. The theme for the 2003 Lumix Award was Man & Machine. Entrants were invited to explore the positive aspects to this relationship – love it or hate it, where would we be without technology? Interpretation could be as broad as desired, enabling entrants to have fun



▲ MISCHA FULLJAMES: LUMIX AWARD WINNER 2002, PICTURE TAKEN AT WORKSHOP

and experiment with the full range of expression of digital cameras.

For more details and to see the 2003 winners and short-listed entries visit; [www.lumixaward.com](http://www.lumixaward.com).



# PANASONIC – LEADING IN TECHNOLOGY AND ENVIRONMENT

FULLY AWARE THAT HUMANKIND HAS A SPECIAL RESPONSIBILITY TO RESPECT AND PRESERVE THE DELICATE BALANCE OF NATURE, WE AT PANASONIC ACKNOWLEDGE OUR OBLIGATION TO MAINTAIN AND NURTURE THE ECOLOGY OF THIS PLANET. ACCORDINGLY, WE PLEDGE OURSELVES TO THE PRUDENT, SUSTAINABLE USE OF THE EARTH'S RESOURCES AND THE PROTECTION OF THE NATURAL ENVIRONMENT WHILE WE STRIVE TO FULFILL OUR CORPORATE MISSION OF CONTRIBUTING TO ENHANCED PROSPERITY FOR ALL.



# PANASONIC BRINGS THE OLYMPIC GAMES TO YOU

PANASONIC'S ADVANCED AUDIO-VISUAL AND BROADCASTING NETWORK TECHNOLOGY CAPTURE THE MOST ATTRACTIVE MOMENTS OF ATHLETIC EVENTS, ALLOWING REAL-TIME GLOBAL TRANSMISSION AND HIGH-QUALITY RECEPTION AT HOME OR ON THE ROAD.

Official Worldwide Olympic Partner  




**LEAD-FREE**  
 PRINTED CIRCUIT BOARD WITH  
 LEAD-FREE SOLDER



**RECYCLING**  
 PANASONIC RECYCLING EXPERTISE  
 CONTRIBUTES TOWARDS ENVIRONMENTAL DESIGN

Panasonic has long taken its responsibility towards the environment very seriously. Outstanding results have been achieved within the company in many fields of environmental technology to date.

## A European Manufacturer

Far from being just a foreign importer, Panasonic has a sizeable number of manufacturing sites within Europe. Shorter logistics paths mean reduced energy consumption. What's more, some of these European sites are taking the lead in promoting cleaner and more advanced products.

## Green Products

Panasonic has a highly proactive stance in environmentally conscious product design, with lead-free solder technology a prime example. The recent company-

wide switch-over to lead-free solder in printed circuit boards demonstrates Panasonic's environmental credentials. Other Panasonic projects include life-cycle thinking-based product design, improved packaging design, and a focus on the energy efficiency of products.

## Energy-efficient Products

In recent years, Panasonic has shown a special commitment towards programmes aiming at reduced product energy consumption in standby mode. In 2003, Panasonic renewed its voluntary commitment to reduced standby energy consumption for audio-visual equipment, a challenging European programme.

## Green Production

On top of the internationally recognised ISO 14001 environment certification status for all European factories, Panasonic has its own clean factories initiative, which targets CO2 emission reduction, production-related chemical substances, increased recycling, and limited water consumption.

## RECORDING

PROFESSIONAL DVC PRO HD CAMCORDER

Small wonder then that Panasonic has been a major sponsor of the Olympic Games for over two decades. As the official supplier of broadcasting equipment for the last five Summer and Winter Games, Panasonic will ensure that viewers get the best possible pictures at the coming Athens games, using Panasonic professional DVCpro50 format, camcorders, studio recorders, compact recorders, and laptop editors – covering over 3200 hours of live Olympic footage.

This year, Panasonic renewed its worldwide Olympic partnership for the Torino Olympic Winter games and the 2008 Beijing Olympic games. Panasonic will also bring sound to visitors using their professional line of RAMSA speakers, and vision via huge AstroVision walls and large projection systems. Meanwhile, the company's car navigation systems and security systems will ensure smooth and safe running of this global event.

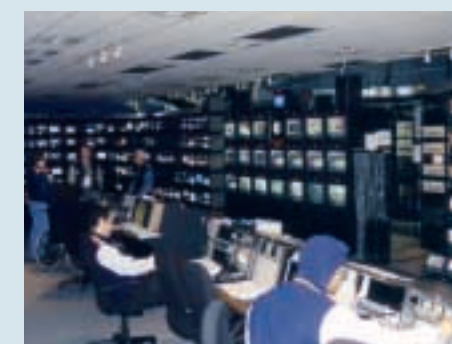
At the Beijing signing ceremony of the 6th consecutive agreement between Panasonic and the IOC in August 2002, Panasonic's unique qualities of Olympic experience and state-of-the-art audio-visual technology were underlined by both sides.

And the Games do not end on August 29th, 2004. Thanks to the Panasonic digital media archive set up at the Olympic Museum in Switzerland, visitors can now access hundreds of hours of Olympic footage on a state-of-the-art video library system.



## ASTROVISION

ASTROVISION WALL, SALT LAKE CITY 2002



## BROADCASTING

THE BROADCASTING NETWORK MASTER CONTROL ROOM AT SALT LAKE CITY 2002





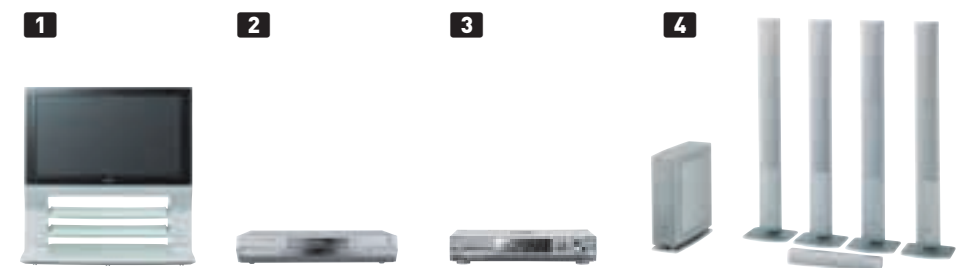
**1 TH-50PV30B AND CABINET TYS-50PX20W  
HIGH DEFINITION PLASMA TV**  
Integrated Digital Tuner and Speakers +  
1366 x 768 XGA Resolution + 3000:1  
Contrast, 1024 Shades of Gradation + SD/PC  
Card Slot + Smart Sound Speaker System +  
Multi Window

**2 DMR-E85H DIGA DVD RECORDER WITH  
BUILT-IN HARD DISK**  
80 GB Hard Disc + Recording onto Hard Disc  
(up to 142 hours in EP Mode), DVD-RAM +  
Time Slip-function – simultaneous record  
and playback + chasing playback + Copy  
from DVD-R to HDD and vice-versa

**3 SA-XR50 FULL DIGITAL  
HOME CINEMA RECEIVER**  
6 x 100W (DIN) + Built-in DTS ES 96/24-, Dolby  
Digital EX-, and Dolby Pro-Logic II-Decoders  
+ Multi-Source Remaster Function + Wide  
Frequency Range: 88kHz Reproduction

**4 SB-TP55 ULTRA-SLIM  
HOME CINEMA SPEAKER SET**  
6 speaker-set + 2-way 3-speaker for front  
and rear, 3-way 5-speaker for center + 100W  
(DIN) power input + Including active  
Subwoofer with 100W (DIN)

## PLASMA, DVD RECORDER, SURROUND SOUND THE-ULTIMATE-CHOICE- FOR-THE-CONNOISSEUR



# 01

Whether you want the best entertainment system or a powerful creative tool, this is the package for you. It's the ultimate system for the connoisseur, featuring a new, flagship VIERA plasma TV for true cinema-style pictures and a state-of-the-art DVD-RAM recorder with a huge built-in hard drive.



**1 TH-42PE30B PLASMA TV**  
Integrated Digital Tuner and Speakers +  
852x480 VGA Resolution + 4000:1  
Contrast, 1024 Shades of Gradation +  
SD/PC Card Slot + Smart Sound Speaker  
System + Multi Window

**2 SC-HT37R**  
One carton Digital Home Cinema  
solution, consisting of:

**2 A DMR-E85H DIGA DVD RECORDER WITH  
BUILT-IN HARD DISK**  
80 GB Hard Disc + Recording onto Hard  
Disc (up to 142 hours in EP Mode), DVD-  
RAM + Time Slip-function – simultane-  
ous record and playback + chasing play-  
back + Copy from DVD-R to HDD + vice-  
versa

**2 B SC-HT07 DIGITAL HOME CINEMA  
CONTROLLER WITH SPEAKER SET**  
700 Watts (RMS) total power output  
+ Build-in Dolby Digital, DTS, and Dolby  
ProLogic II Decoders + AM/FM Digital  
Tuner with RDS and Presets + 3-Way  
Tall-Boy Speakers with Wide Frequency  
(50kHz) Playback + Subwoofer



## PLASMA, DVD RECORDER, SURROUND SOUND BEAUTY-AND-BRAWN- IN-PERFECT-HARMONY

**1**



**2 A**



**2 B**



# 02

The perfect set-up for everyday movies and entertainment. This system performs just as good as it looks and offers great versatility, too. It's the perfect blend of style with science thanks to its classic-looking plasma TV, DVD-RAM video recorder with built-in hard drive, and an elegant new speaker package that saves space yet offers powerful room-filling sound.



PLASMA, DVD-PLAYER, AV RECEIVER,  
SURROUND SPEAKERS

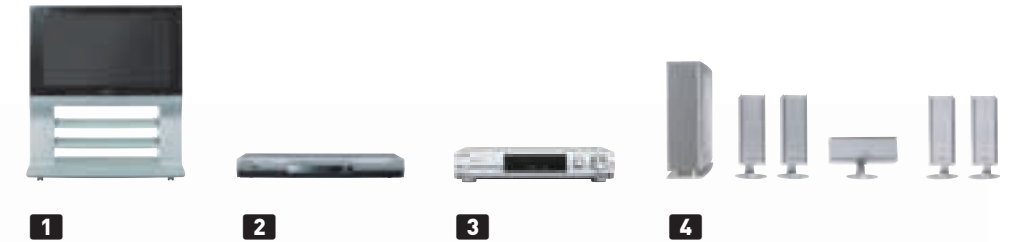
## PLUG-AND-PLAY-PACKAGE- PACKS-A-MIGHTY-PUNCH



**1 TH-42PE30B AND CABINET TZS-42PX20W PLASMA TV**  
Integrated Digital Tuner and Speakers • 852x480 VGA  
Resolution • 4000:1 Contrast, 1024 Shades of Gradation •  
SD/PC Card Slot • Smart Sound Speaker System • Multi  
Window

**2 DVD-S47 DVD-AUDIO/VIDEO PLAYER**  
Multi-Format Playback: DVD-Audio (2ch.), DVD-Video, DVD-  
RAM, DVD-R, (Super) Video-CD, HighMAT, JPEG, MP3, WMA,  
CD-R/RW • Multi Re-Master Processing • Depth Enhancer  
• One Touch AV Enhancer • Audio/JPEG Navigation Menu

**3 SA-XR30 DIGITAL HOME CINEMA RECEIVER**  
5 x 100W (DIN) • Built-in, Dolby Digital-, DTS-, and Dolby Pro-  
Logic II-Decoders • Wide Frequency Range: 88kHz  
Reproduction • DVD-Audio ready • RDS Tuner



# 04

So you've got your new home cinema system and now you're just itching to get it wired and fired. Well here's the ideal system - you'll have it up and running in next to no time and, what's more, it will deliver movie mayhem with wall-shaking power and excitement. The icing on the cake? Not only does this quick and easy set-up do the business, it looks it, too!



**4 SB-TP20 HOME CINEMA SPEAKER SET**  
6 speaker-set • 2-way 2-speaker system  
• 100W (DIN) power input • Including active Subwoofer  
with 100W (DIN) • Magnetic shielding  
for home cinema use



LCD PROJECTOR, HOME THEATRE SYSTEM

# MAXIMUM-MOVIES- FROM-A-COMPACT-SYSTEM



05

When it comes to home cinema, big is very definitely best – but only when it comes to the pictures and the sound. So who says you need loads of bulky kit for the ultimate in movie thrills? Here's a simple set-up that oozes sophistication and gives you a home cinema experience that's just like the real thing!

## 1 PT-AE500E HIGH DEFINITION HOME CINEMA PROJECTOR

True High Definition 16:9 LCD home entertainment projector (1280 x 720 pixels x 3 panels, 850 ANSI Lumen, 1300:1 contrast) + advanced Smooth Screen technology for gridfree projections + Advanced Projector AI (artificial intelligence) for increased Dynamic Sharpness Control + Digital Cinema Reality Circuit: the Hollywood supported natural colour matching technology for improved movie realism + vertical and horizontal digital keystone correction + quiet operation: only 27dB on low lamp power mode

## 2 SC-HT520 DVD-SYSTEM

500 Watts (RMS) total power output + Multi-Format Playback: DVD-RAM, DVD-Video, DVD-Audio, DVD-R, CD-R/RW, MP3, WMA, S-VCD, JPEG, HighMAT + Double Re-Master Function + Build-in Dolby Digital, DTS, and Dolby ProLogic II decoders + AM/FM Digital Tuner with RDS and Presets + 5 silver satellite speakers and sub-woofer



## LCD TV, MICRO SYSTEM THE-SQUEEZE-ME-IN ANYWHERE-SYSTEM


**1**

**2**

### **1 TX-26LXD1 LCD TV**

16m/sec Moving Picture Response  
+ 1280x768 XGA Resolution + Wing-  
Type Stereo 4-Speakers + SD/PC  
Card Slots + Swivel Stand + Multi  
Window

\* LCD TV pedestal stand is subject  
to change

### **2 SC-PM39D MICRO-DVD-SYSTEM**

140 Watts (RMS) + 5-DVD/CD-  
Changer + Multi-Format Playback:  
DVD-RAM, DVD-Video, DVD-Audio,  
CD-R/RW, MP3, WMA, JPEG, S-VCD,  
HDCCD + High MAT + Tape-Deck +  
RDS-Tuner + Bi-Amp & 3-Way  
Speaker + Optical Output



# 06

No room for home entertainment? That's no excuse! Here's a compact set-up that will fit into the smallest of rooms and fill it with floor-shaking sound. And what's more, it will do it with supreme style: the lightweight VIERA LCD TV delivers heavyweight picture quality in full widescreen glory, while the smart micro system packs in the features to deliver superb music and movie sound.

## PORTABLE DVD-VIDEO, PORTABLE SPEAKERS THE-CINEMA-THAT-GOES- WHEREVER-YOU-DO


**1**

# 07

Who needs a home for home cinema? This mobile package means that wherever you go, your movies go with you! Our portable DVD-Video players are pocket entertainers and as well as movies, they can playback conventional music CDs and even higher quality DVD-Audio. Some even have SD Memory Card slots.

### **1 DVD-LX9**

Portable DVD Player with docking station and external speakers + DVD-  
Audio / Video, DVD-RAM, DVD-R, CD-R/RW and MPEG4, MP3, WMA, JPEG,  
HighMat Playback + 9" VGA 1 million pixels LCD Wide Screen + DD/dts  
decoders for 5:1 Channel Audio Output + Built-in stereo amplifier with  
2 speakers + SD Viewer connection with SD link + Built-in Lithium  
rechargeable battery (up to 2.5 hours playback)







PANASONIC PLASMA DISPLAYS  
DELIVER BRILLIANT, HIGH-CONTRAST  
IMAGES WITH RICH GRADUATION  
AND REMARKABLE DEPTH.

## SUPER FLAT, SUPER THIN PLASMA PANELS

**HD MACH** (Multi-facet Asymmetrical Configuration Hyperpixel – TH-50PHW6 only) Dramatically improves both light-emitting efficiency and intensity which results in a higher level of brightness. **(See picture A)**

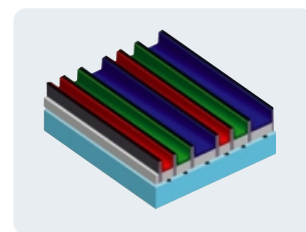
**SUPER REAL GAMMA SYSTEM** In Normal/Cinema mode 1,024 shades of gradation are reproduced for superior detail in dark scenes.

**NEW REAL BLACK DRIVE SYSTEM** Provides deeper, richer blacks and a stunning 4000:1 contrast, which dramatically enhances image clarity and realism. **(See picture B)**

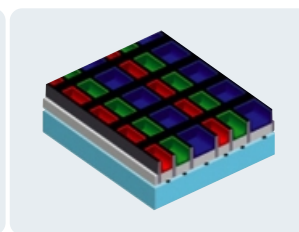
**NEW QUASI 100HZ SYSTEM** This detects when a PAL video signal is input and essentially doubles the number of fields displayed in a given time. This dramatically reduces the flicker that can occur when playing PAL sources.

**MACH ENHANCER** This technology enhances an object's contours in a way that best suits the object. **(See picture C)**

**A HD MACH**



Conventional HD Panel



HD-MACH Panel

**DEEP BLACK FILTER** Incorporated into the front protective glass of the plasma display panel this suppresses light transmittance to decrease the amount of external light reflected.

**DIGITAL CINEMA REALITY** When the panel detects the video source is film it uses still image processing for each individual image to achieve a more faithful reproduction.

**PLASMA C.A.T.S** (Contrast Auto Tracking System) Automatically senses ambient light conditions and adjusts the brightness and gradation accordingly to optimise contrast.

**MULTI WINDOW** Select either "Picture-and-Picture", "Picture-in-Picture" or "Picture-out-Picture".

All Plasma and LCD Panel technologies may be subject to pixel dropout. Panasonic products are manufactured to a high specification. For details of our specification please refer to your supplying dealer or [www.panasonic.co.uk](http://www.panasonic.co.uk)

**B New Real Black Drive System**



Conventional



New Real Black Drive System

**C MACH Enhancer**



Conventional



MACH Enhancer

### TH-50PHW6B

- ✦ 50 inch/127cmV High Definition Widescreen Plasma Display
- ✦ 1366 x 768 XGA Resolution
- ✦ 300:1 Contrast, 1024 shades of gradation
- ✦ New Quasi 100Hz system
- ✦ Multi Window (PAP, PIP, POP)
- ✦ PC Input (mini D-sub 15-pin)

(Shown on optional Pedestal Stand)



### TH-42PW6B

- ✦ 42 inch/106cmV Widescreen Plasma Display
- ✦ 4000:1 Contrast, 1024 shades of contrast
- ✦ New Quasi 100Hz system
- ✦ Multi Window (PAP, PIP, POP)
- ✦ PC Input (mini D-sub 15 pin)

(Shown on optional Pedestal Stand)





**00:12**  
JUST CAN'T STOP WATCHING





# VIERA

## BEYOND TODAY'S TECHNOLOGY

THIS YEAR SEES OUR BIGGEST RANGE OF FLAT PANEL DISPLAYS. EYE-CATCHING AESTHETICS, EAR-PLEASING ACOUSTICS, DIGITAL NETWORKING CAPABILITIES – THE UNIQUE VIERA RANGE HAS IT ALL AND TAKES AV FAR BEYOND THE CONVENTIONAL



VIERA  
PLASMA TVS

### A New Real Black Drive System



Conventional



with New Real Black Drive System

### B Super Real Gamma System



Conventional



with Super Real Gamma System

### C Mach Enhancer



Conventional



with Mach Enhancer

### D SD/PC Card Slots



### Industry's Highest Dark-Area Contrast: New Real Black Drive System

By reducing the pre-discharge emission when reproducing black, the New Real Black Drive System provides deeper, richer blacks and a stunning 4000:1\* contrast. The result is dramatically enhanced image clarity and realism. (see picture A)

### Superior Detail in Dark Scenes: Super Real Gamma System

The Super Real Gamma System provides the optimal number of sub-fields for each scene. This allows Panasonic plasma TVs to reproduce 1,024 shades of gradation for superior detail in dark scenes. (see picture B)

### Clear Details and Impressive Depth: MACH Enhancer

The appearance of an object as perceived by the human eye is influenced by the colours of the objects surrounding it. This phenomenon is known as the Mach Band Effect. Panasonic Mach Enhancer technology utilises the principles of the Mach Band Effect to enhance an object's contours in a way that best suits the way the human eye perceives them. Noise is minimal, so you get a more natural-looking image with clear details and impressive depth. (see picture C)

### Bright, Sharp, High-Definition Images: HD (High-Definition) Panel with Bounded Cell Structure

With the TH-50PV30, you're ready to enjoy the absolutely stunning image quality that the coming high-definition media will offer. The HD panel, with around 1,050,000 (1,366 x 768) pixels, can clearly, sharply and vividly reproduce even the tiniest details from high-definition signals or other high-image-quality sources. The HD panel features a bounded cell structure in which wall-like ribs are used to wrap each individual cell. By increasing the area in which the phosphor can be applied, this dramatically improves both light-emitting efficiency and intensity, resulting in images of superior brightness.

### Expansive, Cinematic-Type Sound: Smart Sound Speaker System

The new Smart Sound Speaker System features four 16-mm-wide speaker units arranged vertically on either side of the screen. Each speaker unit is remarkably slim, thanks to a new design in which a voice coil is formed in a planar configuration onto the diaphragm. With the speaker units surrounding the screen, the sound seems to pour out right from the center of the picture.

Dialogue and other sounds are clear and easy to hear. Bass sounds are robust too, thanks to two round woofer units at the screen bottom. The sound presence is further enhanced by a twin construction design that independently drives the left and right woofers to spatially expand the rich, well-balanced bass tones.

### Easy Playback of Digital Snapshots: SD/PC Card Slots

VIERA features both an SD Memory Card slot and a PC card slot, giving you an easy way to enjoy large-screen viewing of still images from a digital camera or other memory card-equipped device. Photos can be viewed as a slide show or in photo-album format. You can also easily rotate images using the remote control. (see picture D)

### Multiple-Source Entertainment on One Screen: Multi Window

VIERA lets you view images from two different sources at the same time. Select either Picture-and-Picture mode (which shows the two images on separate halves of the screen), Picture-in-Picture mode, or Picture-out-Picture mode.

\* For the TH-42PA30 and 37PA30



VIERA  
LCD TVS

### E Active Contrast



Sharp gradation in white areas



Fine nuancing between blacks is clearly expressed

### F Active Light Control



Conventional: dull, non-transparent appearance



Active Light Control: Crystal clear transparency

### G MACH Drive



Conventional



MACH Drive

### H SD/PC Card Slots



### Superior Image Presence: New LCD AI

Panasonic's New LCD AI technology uses Active Light Control and Active Contrast/Gamma Control functions, resulting in greater brightness, deeper blacks and superior gradation.

**Active Contrast/Gamma Control** detects the brightness level of the input signal and increases contrast by dynamically extending the output luminance signal. Active Gamma Control uses a method called histogram detection to process the luminance distribution in real-time. Non-linear gamma correction is then used to boost gradation in the luminance areas containing the greatest number of image elements. The result is greater detail, depth and realism than ever before. (see picture E)

**Active Light Control** automatically detects the brightness levels of the input signal and adjusts the backlight accordingly in real-time. This represents a dramatic improvement over conventional LCD TVs, which commonly suffer from insufficient maximum brightness and a lack of depth due to weak black reproduction. The result is a greatly expanded dynamic range from

black to white peak, with crisp, natural pictures that assure dynamic viewing. (see picture F)

### Quick Motion Picture Response: Overdrive System

Panasonic's advanced Overdrive System technology helps the LX1 series achieve fast response to moving pictures. Pictures appear quickly, and images are clear and sharp with minimal afterimagining. The Overdrive System technology applies "overdrive" to parts of the image that have medium brightness (such as skin tones), where conventional LCD TVs tend to have a lower response speed. This reduces the blurring that can occur in moving pictures. (see picture G)

### True High-Definition Images: HD (High-Definition) Panel

The LX1 series sets a brilliant new standard in high-definition viewing. Boasting an HD panel with approximately 983,000 (1,280 x 768) pixels, these models relay all the detailed beauty of high-definition broadcasts and other high-image-quality sources. And, thanks to the industry's highest levels of brightness (450 cd/m<sup>2</sup>) and contrast (500:1), they reproduce high-quality, true-to-life images from

any HD source. The LX20 series also offers a wide, 170° viewing angle both vertically and horizontally, so you enjoy the same vivid, beautiful images from virtually any angle.

### True-to-Life, High-Impact Stereo Sound: Wing-Type Stereo 4-Speakers

Featuring two-way four-speakers on both sides of the screen, this sound system focuses the sound at the centre of the screen, and provides superb, true-to-life stereo imaging. Speaker units are housed in a bass-reflex speaker box that provides a flat frequency response all the way down to the extra-low frequency range for a deeper, richer bass.

### Easy Playback of Digital Snapshots: SD/PC Card Slots

SD and PC card slots on the front panel give you an easy way to play back still pictures from various memory cards. Photos can be viewed as a slide show or in photo-album format. You can also easily rotate images using the remote control. (see picture H)



**VIERA**

**BEYOND TODAY'S TECHNOLOGY:  
BEYOND THE BOUNDARIES  
OF THE CONVENTIONAL**

beyond borders.



**IMAGE QUALITY FOR THE DIGITAL AGE**

The TH-50PV30B on its TYS-50PX20W cabinet unleashes the full beauty of images from advanced digital sources. Thanks to Panasonic technologies such as HD (High-Definition) Panel, Full-Digital Processor and MACH Enhancer, the TH-50PV30B delivers extremely crisp, beautiful images from high-definition signals or other high-image-quality sources.

# TH-50PV30

**NEW 50 INCH (127cmV) HIGH-DEFINITION  
PLASMA TELEVISION WITH INTEGRATED  
DIGITAL TUNER AND SPEAKERS** (available April

2004) + New Real Black DriveSystem + Super Real Gamma System + HD Panel + Full-Digital Processor + MACH Enhancer + Smart Sound Speaker System + SD/PC Card Slots + Aero-Floating Silhouette



**EASY PLAYBACK OF DIGITAL SNAPSOTS SD AND PC**

Card slots on the front panel give you an easy way to enjoy large-screen viewing of still images from a digital camera or other memory card-equipped device.







### TH-42PE30B PLASMA TERRESTRIAL IDTV VIERA *SD*

- + Available April 2004
- + 106cmV 16:9 Widescreen Panel
- + Integrated Digital Terrestrial Tuner and Speakers
- + 852 x 480 VGA Resolution
- + 4000:1 Contrast, 1024 Shades of Gradation
- + SD/PC Card Slot
- + Smart Sound Speaker System
- + Multi Window
- + Shown on optional cabinet stand TYS-42PX20W,  
optional pedestal stand TYST-42PX20 also available



### TH-37PE30B PLASMA TERRESTRIAL IDTV VIERA *SD*

- + Available April 2004
- + 94cmV 16:9 Widescreen Panel
- + Same specification as TH-42PE30B
- + Shown on optional cabinet stand TYS-37PX20,  
optional pedestal stand TYST-42PX20 also available

All Plasma and LCD technologies may be subject to pixel dropout. Panasonic products are manufactured to a high specification. For details of our specification please refer to your supplying dealer or [www.panasonic.co.uk](http://www.panasonic.co.uk)





**VIERA**

**BEYOND TODAY'S TECHNOLOGY:  
PICTURE QUALITY WELL BEYOND  
EXISTING LIMITS**



beyond borders.



**DEEPER, RICHER BLACKS**

The human eye has high sensitivity to dark scenes and lower sensitivity to bright scenes. VIERA images are optimised accordingly, achieving superior overall image quality. Thanks to Panasonic LCD technologies including New LCD AI and Overdrive System, the TX-32LXD1 provides superior detail in dark scenes, from darkest blacks to shades of gray.

# TX-32LXD1

**NEW 32 INCH (81 cmV) HIGH-DEFINITION  
WIDE LCD TV WITH INTEGRATED DIGITAL  
TUNER** (Available April 2004) + New LCD AI + 16-msec

Quick Motion Picture Response + HD Panel + Full-Digital Processor + Wing-Type Stereo 4-Speakers + SD/PC Card Slots + Aero-Floating Silhouette + Also available as TX-26LXD1 26 inch (66cmV) screen size



**SD/PC CARD SLOTS**

VIERA features both an SD Memory Card slot and a PC card slot, giving you an easy way to play back still pictures from various memory cards. Photos can be viewed as a slide show or in photo-album format.





### TX-22LT3 WIDESCREEN LCD TELEVISION

- + 55.8cmV 16:9 widescreen LCD TV
- + 16m/sec Moving Picture Response
- + 640x480 VGA Resolution
- + 2-way, four speakers
- + Hammer Drive Sound System



### TX-20LA1 LCD TELEVISION

- + 51cmV 4:3 LCD TV
- + 16m/sec Moving Picture Response
- + 640 x 480 VGA Resolution
- + New LCD AI
- + New Pixel Controller
- + Hammer Drive Sound System



## VISUAL

## LCD TELEVISIONS

### TX-15LV1 LCD TELEVISION WITH BUILT-IN DVD PLAYER

- + 38.4cmV 16:9 widescreen LCD TV
- + Built-in DVD
- + 16m/sec Moving Picture Response
- + 854x480 VGA Resolution
- + New LCD AI
- + Hammer Drive Sound System



### TX-17LA1 LCD TELEVISION

- + 43.2cmV 4:3 LCD TV
- + 16m/sec Moving Picture Response
- + 640 x 480 VGA Resolution
- + New LCD AI
- + New Pixel Controller
- + Hammer Drive Sound System



### TX-14LA1 LCD TELEVISION

- + 35.7cmV 4:3 LCD TV
- + 16m/sec Moving Picture Response
- + 640 x 480 VGA Resolution
- + New LCD AI
- + New Pixel Controller
- + Hammer Drive Sound System



All Plasma and LCD technologies may be subject to pixel dropout. Panasonic products are manufactured to a high specification. For details of our specification please refer to your supplying dealer or [www.panasonic.co.uk](http://www.panasonic.co.uk)



**09:37**  
WATCH THE STARS ON THE BIG SCREEN

## PT-AE500E HIGH DEFINITION HOME CINEMA PROJECTOR

- + True High Definition 16:9 LCD home entertainment projector (1280 x 720 pixels x 3 panels, 850 ANSI Lumen, 1300:1 contrast)
- + Advanced Smooth Screen technology for gridfree projections
- + Advanced Projector AI (artificial intelligence) for increased Dynamic Sharpness Control
- + Digital Cinema Reality Circuit: the Hollywood supported natural colour matching technology for improved movie realism
- + vertical and horizontal digital keystone correction
- + quiet operation: only 27dB on low lamp power mode



## LCD PROJECTOR



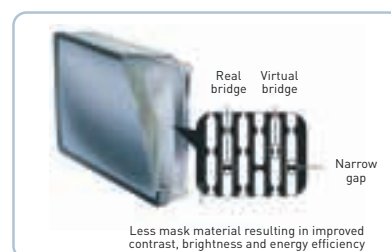




#### A Picture Perfect

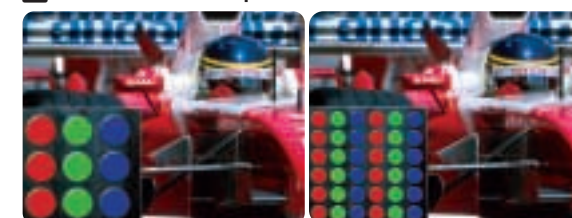


Current CRT



New fine pitch CRT

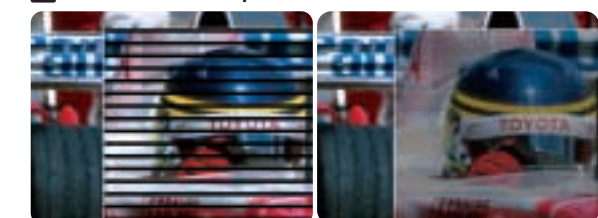
#### B 100Hz with 1024 x 625 pixels



Standard Resolution

Acuity and QuintriX SR deliver increased vertical and horizontal resolution

#### C 75Hz with 2376 x 833 pixels



Standard Line Structure

New Line Structure delivers greater resolution and image detail

# ACUITY QuintriX SR

## THE BEST IN PICTURE PERFORMANCE

NEXT GENERATION TELEVISION IS HERE... AS WELL AS THE QUINTRIX SR TUBE, OUR MOST ADVANCED CATHODE RAY TUBE SETS FEATURE THE ACUITY CORE, OUR ALL NEW DIGITAL TECHNOLOGY THAT TAKES PICTURE QUALITY TO THE NEXT LEVEL

### SUPERIOR PICTURE

**RESOLUTION** Panasonic's EISA award winning PD30 series and the new PX30 model delivers the ultimate in CRT TV picture quality. Not only does it take advantage of our unique Acuity Core technology, it also benefits from Improved Motion Compensation which enhances picture quality even further.

**QUINTRIX SR** With the newer QuintriXSR (Super Resolution) tubes, we've enhanced key component technologies to give you picture performance that is simply staggering:

### NEW SHADOW MASK CONFIGURATION

We have developed a new and different shaped Shadow Mask which now has fine-pitch meshing. The new fine-pitch mask has less material and therefore allows more beam current to easily pass through it with low energy loss. It means greater brightness without any side effects. Picture resolution and detail levels are also dramatically enhanced. By using smaller phosphor dots on our screen faceplates and a new shaped electron gun we can create image details that are almost as fine as a computer monitor.

### BETTER BLACKS, HIGHER CONTRAST

The use of a black-tinted glass greatly improves black reproduction. This delivers deep, rich blacks while maintaining high brightness. The resulting images have exceptionally high contrast.

### SUPER OLF ELECTRON GUN

Our LOLF guns have evolved into Super OLF. They now fire at a smaller diameter on the screen which means finer detail can be more readily pinpointed. You'll also notice greater accuracy, especially at screen corners. What's more, a high efficiency Deflection Yoke makes it possible to narrow the neck of the electron gun, reducing reflection and helping to save energy.

### VIRTUALLY NO PICTURE NOISE

With QuintriX SR, you can say goodbye to the 'sawtooth' and jagged edge effects often seen when someone wearing a checked jacket appears on TV. When switched to progressive mode, QuintriXSR dramatically reduces these picture distortions.

**ACUITY LINE STRUCTURE** Most TVs offer picture resolution of 625 lines with 1024 pixels per line and resolution of 833 horizontal lines with more than 2376 pixels per line – over double that of a standard TV. Vertical line resolution is also improved by a third when compared to a non-Acuity set.

**NEW 3D COMB FILTER** With Acuity, you can even see higher resolution still images accurately on your TV. That's due to the NEW 3D Comb Filter which reduces the moiré effect you sometimes get when watching a picture that contains fine lines or patterns.

**EXCEPTIONALLY SMOOTH IMAGES** The Acuity Core brings other advantages. Standard 100Hz systems often create judder or blurring during fast motion scenes. In the PD30 Series, the advanced Motion Compensation reduces this. This spells the end for flicker and also means the pictures you see are smooth, natural and supremely sharp.

**LOOK SHARPER** A smoother, cleaner, sharper, smarter picture with no flicker, judder or blur. You might call that perfection. We've called it Acuity. And when you marry Acuity with QuintriX SR, the result is as perfect as the picture.





**ACUITY AND QUINTRIX SR:  
MORE LINES AND MORE DOTS FOR  
A BETTER PICTURE**

**T**  
[tau]



**PICTURE PERFECT**

The EISA Award-winning TX-36PD30 sits at the top of our cathode ray tube range. It is the ultimate model to choose if you demand a large screen TV that looks superb – regardless of whether it is switched on or off.



**TV OF THE YEAR AS VOTED  
BY THE EISA PANEL**

# TX-36PD30

**86 cmV T[tau] WIDESCREEN TV** Quintrix SR

- + Acuity Processing (75Hz/833I) + 100Hz Super Digital Scan
- + 50Hz Progressive Scan + Multi-window + 2000 Page Teletext
- + Four Scart in/outs + Component Video input and Progressive
- + Also available as TX-32PD30 76cmV screen size

2376 PIXELS AND 833 LINES







[ tau ]

FLAT  
DIGITAL

### TX-21AV1 T(tau) 4:3 FLAT SCREEN TELEVISION

- + 51cmV 4:3 television with built-in VCR
- + Quinrix Flat Picture Tube
- + 50Hz
- + Mono sound
- + 2 Tuners

### TX-28CK1 4:3 NICAM TELEVISION

- + 66cmV 4:3 Screen
- + Quinrix Picture Tube
- + 50Hz
- + Nicam Stereo Sound
- + Supplied with trolley stand

### TX-25CK1 4:3 NICAM TELEVISION

- + 59cmV 4:3 Screen
- + same specification as TX-28CK1

### TX-21CK1 4:3 NICAM TELEVISION

- + 51cmV 4:3 Screen
- + same specification as TX-28CK1



VISUAL

## 4:3 TELEVISIONS



### TX-21AP1 T(tau) 4:3 FLAT SCREEN TELEVISION

- + 51cmV 4:3 Screen
- + Quinrix Flat Picture Tube
- + 50Hz
- + Stereo sound



### TX-15AT1 T(tau) 4:3 FLAT SCREEN TELEVISION

- + 36cmV 4:3 Screen
- + Quinrix Flat Picture Tube
- + 50Hz
- + Mono sound



### TX-21JT2 4:3 TELEVISION

- + 51cmV 4:3 Screen
- + Mono Sound



### TX-14B4T 4:3 TELEVISION

- + 34cmV 4:3 Screen
- + Mono Sound



### TX-14GV2 4:3 COMBINED TV AND VCR

- + 34cmV 4:3 television with built-in VCR
- + Mono Sound
- + 2 Tuners

# VIDEO RECORDERS WITH INTELLIGENT CONTROL

AT THE HEART OF ALL THE S-VHS AND VHS MODELS IS PANASONIC'S SUPER DRIVE SYSTEM, WHICH IS A COMBINATION OF FEATURES MAKING YOUR VCR A JOY TO USE. IT PROVIDES INTELLIGENT CONTROL FOR EFFORTLESS OPERATION WITH SOPHISTICATED FUNCTIONS. IF YOU WANT THE 'BEST OF BOTH WORLDS' CHOOSE THE NV-VP31EBS – DVD/VCR IN ONE. A FULLY FEATURED DVD PLAYER AND VIDEO RECORDER IN ONE SPACE SAVING AND STYLISH UNIT.



## NV-VP31EBS DVD PLAYER AND VIDEO RECORDER COMBI

[Available May 2004]

**DVD Player:** \* Multi-Format Playback: DVD-Audio (2ch.), DVD-Video, DVD-RAM, DVD-R, (Super) Video-CD, HighMAT, JPEG, MP3, WMA, CD-R/RW \* One Touch AV Enhancer \* Variable Speed Playback with Sound

**Video Recorder:** \* Nicam Stereo Sound \* 43 seconds Jet Rewind (with 180-min. tape) \* Intelligent Timer for easy programming \* Video Plus \* External Link \* 1 month 16 programme timer \* Auto Setup \* NTSC Playback \* Front AV-Input \* Music Playback from CD during JPEG-Slideshow via AV-Input

**Common Features:** \* Large 2 colour front display (VCR and DVD) \* 2 Scart Sockets \* Silver

**MAIN FEATURES** **43 Second Jet Rewind** rewinds a 180 minute tape in 43 seconds without damage, while 35x Jet Search lets you visually search a 1 hour recording in EP Mode in just 100 seconds (See picture A). **CVC-Super** provides optimum picture quality thanks to the use of Super Ferrite Heads. All VHS and S-VHS models have **EP-Mode** super long play, which enables you to record up to 12 hours on a 4-hour tape (See picture B). **Auto SP/LP Change** automatically switches SP to LP on programmed recordings if insufficient tape is left to complete the recording in SP mode. **External Link** is for recording programmes from your set-top box. There are two settings, External Link One enables extremely easy recording of digital satellite programmes using Sky Guide and Personal Planner. External Link Two allows simple timer recording from digital set-top boxes and satellite receivers with timer functions (Scart connection required). **Video Plus** makes programming your Panasonic VCR simple – just enter the codes found in most TV schedules and your VCR does the rest. Then there's **PDC**\*1 – Programme Delivery Control to adjust your programmed settings if the broadcaster changes the transmission times. **Intelligent Timer** allows easy set-up of the VCR for timer recording by simply pressing the intelligent timer key as well as editing of the previously programmed data on OSD.



A Jet Rewind



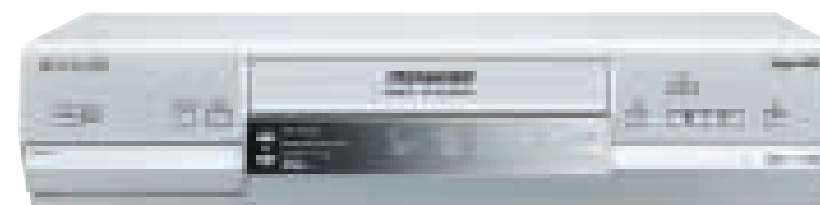
B EP Mode



C Super VHS



D S-VHS ET



## NV-SV121EBS S-VHS NICAM VIDEO RECORDER

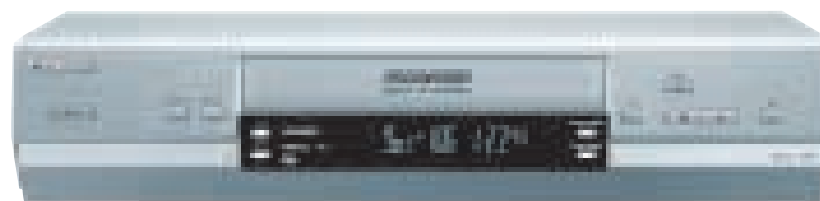
[Available May 2004]

\* S-VHS \* S-VHS ET: Super-VHS-Recording with VHS High Grade Tapes \* EP mode – 12 hours Super Long-Play \* 43 seconds Jet Rewind (with 180-min. tape) \* Time Base Corrector \* 3-D Noise Reduction \* External Link \* 1 month 16 programme timer \* Video Plus and PDC \* Quick Erase \* Front AV-Input \* NTSC Playback \* 2 Scart Sockets \* Silver



## NV-HV61EBS NICAM VIDEO RECORDER

\* Nicam Stereo Sound \* SQPB – Super-VHS Quasi Playback \* EP mode – 12 hours Super Long-Play \* 43 seconds Jet Rewind (with 180-min. tape) \* Video Plus and PDC \* 1 month 16 programme timer \* Quick Erase \* Intelligent Timer \* Auto Setup \* NTSC Playback \* External Link \* 2 Scart Sockets \* Silver \* Also available in Black – NV-HV61EB



## NV-MV21EBS 2-HEAD VIDEO RECORDER

[Available May 2004]

\* SQPB – Super-VHS Quasi Playback \* EP-mode – 12 hours Super Long-Play \* 43 seconds Jet Rewind (with 180-min. tape) \* Quick Erase \* Video Plus and PDC \* 1 month 16 programme timer \* Intelligent Timer \* Auto Setup \* External Link \* NTSC Playback \* 1 Scart Socket \* Silver

**OTHER CONVENIENT FEATURES** **SQPB (Super-VHS Quasi Playback)** enables you to play tapes recorded in the S-VHS or S-VHS-ET formats on a non-S-VHS video recorder. **NTSC Playback**\*2 enables NTSC recorded tapes from USA or Japan to be viewed on your PAL TV. **Super VHS (S-VHS)** gives you outstanding picture quality with more than 400 lines of horizontal

resolution and a high s/n ratio. (See picture C) The **S-VHS ET** feature assures S-VHS level recordings on VHS High Grade tapes giving you high quality pictures at a lower cost (See picture D). **3D Digital Noise Reduction** eliminates noise contained in the video signal further enhancing picture quality. **Quick Erase** refreshes a used tape by automatically erasing 'noise', VISS and recorded

signals. A 3 hour tape can be completely refreshed in 30 minutes. 16:9 Wide-screen Compatibility automatically formats the picture to provide full aspect widescreen pictures.

\*1 PDC is subject to broadcast transmission in your area  
\*2 For NTSC playback, the TV must have a PAL decoder capable of auto switching between 525 and 625 lines, otherwise the picture may be unstable, not fill the screen, or no picture will be displayed at all. Video Plus is a trademark of Gemstar Development Corporation.





## PORTABLE DVD PLAYERS



DVD-LX9EBS



DVD-LX8EBS



DVD-LS50EBS



## TABLE SIZE DVD PLAYERS



DVD-S75EBS



DVD-S47EBS



DVD-S27EBS

# THE SIMPLY UNBELIEVABLE DVD PLAYERS

THE PANASONIC RANGE OF DVD PLAYERS DELIVER STUNNING PICTURES AND SOUND FOR VIEWING PRE-RECORDED FILMS. THE DESIGN AND LOOKS ARE NOT ONLY SLIM AND MODERN, BUT ARE CO-ORDINATED WITH OTHER CURRENT PANASONIC A/V PRODUCTS. THERE'S A WIDE CHOICE OF DVD PLAYERS AVAILABLE FOR THE HOME OR FOR PEOPLE ON THE MOVE. ALL HAVE EXTENSIVE FEATURES AND ARE THE RESULT OF PANASONIC'S VAST KNOWLEDGE AND EXPERIENCE IN PRODUCING AUDIO VISUAL PRODUCTS.

### MULTI-FORMAT PLAYBACK

Panasonic DVD players enable playback of a wide range of software. Besides the traditional DVD-Video and DVD-Audio (some players are 2 channel) formats, they also offer playback of DVD-RAM and DVD-R discs. So recordings made on a Panasonic DVD recorder for instance, can also be played back on a Panasonic DVD player. For further enjoyment they

will play CD, CD-R/RW, Video CD or Super VCD discs. For interfacing with a PC, pictures (JPEG) and music (WMA or MP3) downloaded onto CD-R/RW discs can be played back through a Panasonic DVD player. This ability to playback a whole host of discs in a wide variety of recording formats puts a Panasonic DVD player at the heart of any A/V network system.

### DIGITAL MEDIA EXCHANGE

In addition to offering multi-format playback, some new Panasonic DVD players have Highmat (high-performance media access technology). Highmat creates a faster and easier way to

move digital data from a PC to other A/V equipment. Support by Microsoft means that suitable software will be readily available. Therefore when combinations of photos (JPEG) and audio (WMA or MP3) are downloaded onto a CD-R/RW disc, Highmat enables benefits such as quicker start-up times and location of specific tracks or images which are made easier to find through visibility of play lists. Up until now different types of data recorded onto the same disc have suffered from lack of commonality and caused confusion and delay in finding and playing/viewing data. That's all a thing of the past thanks to Highmat.



**THE PICTURE** DVD Video pictures have over 500 lines of horizontal resolution\* which is more than twice that of a typical home VCR. Panasonic's MPEG Digital Noise Reduction further enhances the picture quality of DVDs and the overall result is a cleaner, sharper and brighter picture to greatly improve viewing pleasure. Depth Enhancer reduces picture noise due to camera focus, so dark parts of the background in a picture appear with greater fidelity and depth. For even sharper resolution, choose a Panasonic DVD player with 54MHz DAC (twice the standard) where the disc is over sampled 4 times for maximum picture quality. Picture Control on home deck models enables you to adjust the picture brightness, contrast and colour to suit your own taste.

Other features available on Panasonic DVD players include – Cinema Mode for watching films in cinema-like colour, luminance and picture resolution. This feature also improves darker detail and avoids colour smearing. Gamma Correction enables the adjustment of dark to light gradation to make details in shadows more visible. The Monitor Selector feature selects the most adequate picture quality type to suit the monitor to which the player is connected (i.e. CRT TV, Projection TV, Plasma Panel etc.) There's even selectable NTSC Output for viewing 'all Region' discs or Region 2 NTSC titles as well as PAL sys-

tem DVDs. Progressive Scan (NTSC playback) enhances the picture quality of NTSC discs. Connectors include a Component Out (NV-S75EBS only), a 21-pin composite video connector which also has RGB and Y/C outputs for maximising TV and projectors picture quality. The one-touch AV Enhancer button (DVD-S47EBS and DVD-S27EBS only) automatically selects the relevant features (i.e Dialogue Enhancer, Cinema Mode, JPEG Revision etc.) in relation to the source material in order to ensure that the optimum quality of image and tone is achieved.

**THE SOUND** Within the range, Panasonic DVD players offer a variety of sound systems – for instance a Built-In Digital Theater System (DTS) Decoder for connection to an A/V receiver with five or six inputs. From DTS encoded discs you can then enjoy the amazing 5.1 channel surround sound, used by many cinemas. Or a Built-In Dolby Digital Decoder which delivers crisp cinema-like sound using six discrete channels. All models have Digital Outputs for DTS, Dolby Digital and MPEG2 enabling you to feed DTS, Dolby Digital, MPEG2 signals into external surround decoders.

Advanced Virtual Surround Sound enables you to create surround sound effect through the two front speakers when playing Dolby Digital encoded discs with two or more channels. This

effect can even be enjoyed when using headphones using the Headphone VSS feature. Panasonic's Dialogue Enhancer cleverly manages loud sound effects to achieve a more audible sound. Double Digital Re-Master Processing uses Digital Signal Processing to produce the musical harmonics above the 20kHz level. This adds a new level of depth to the original recording, producing a more natural soundstage and clearer high frequency image. The result is that even your old CDs will sound better. Benefits are also applied to recordings made in WMA or MP3 onto CD-R/RW discs. With Audio Navigation Menu, on-screen confirmation of MP3 folders recorded on CD-R and CD-RW discs enables extra fast track search. For even more ways to enjoy music, this function is also compatible with CD-R discs featuring multi-session recordings.

Advanced Graphical User Interface (GUI) gives on-screen pictograms for easily adjusting settings via the remote control. There is also Hi-Speed picture motion Scan with five speeds up to x200 and Chapter Review for reviewing a few seconds of a film to refresh your memory after an interruption.

\* Depending on software and TV monitor capability





**10:54**  
WATCHING THE PROGRAMME  
YOU MADE YOURSELF





Direct Navigator (DMR-E100H)

**A** Direct Navigator



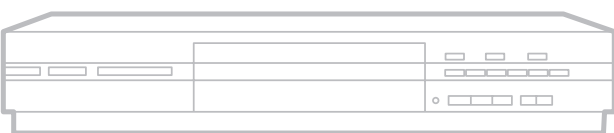
Advanced Direct Navigator  
(all other 2004 models)

# DIGA

**AT THE HEART OF YOUR  
DIGITAL NETWORK**



**C** Digital pictures  
via SD Card slot



THE PANASONIC DIGA RANGE OFFERS A DVD RECORDER TO SUIT EVERYONE'S NEEDS AND EACH MODEL IS EQUIPPED WITH FEATURES THAT ARE ONLY POSSIBLE WITH PANASONIC TECHNOLOGY

**DIRECT NAVIGATOR** (DMR-E100H, DMR-E85H, DMR-E75V, DMR-E65, DMR-E55) The Direct Navigator of the DMR-E100H displays a list of the programmes you've recorded – use the remote to scroll over titles in the list and as you do so, the programme starts playing in the background. The advanced Direct Navigator on our new models, DMR-E85H, DMR-E65, and DMR-E55, makes editing or playing back recordings even easier. Instead of showing your recorded contents as a list, these models display them as thumbnail images. Use the remote to scroll across a thumbnail and as you do so it begins playing. (see picture A)

**HIGH PICTURE QUALITY ON DVD-R RECORDINGS** (DMR-E100H, DMR-E85H, DMR-E75V, DMR-E65, DMR-E55) Create and easily share your DVD movie masterpieces! Everyone can enjoy your recordings thanks to our recorders world compatibility. If you're not sure what kind of DVD player your friends or family own, simply record using DVD-R. A DVD-R disc which conforms to DVD-Video standards can be played back on virtually any standard DVD-Video player. DVD-R is a write-once format and

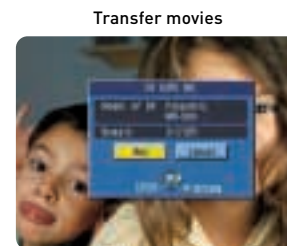
blank discs tend to be more affordable. This makes DVD-R the ideal format for archiving or sharing recordings and also means that Panasonic DIGA models are extremely compatible and versatile.

**PLAYLIST PLAYBACK** (DMR-E100H, DMR-E85H, DMR-E75V, DMR-E65, DMR-E55) Make your own Playlists! Scenes from your recordings can be easily re-arranged into any order so you can create special versions of the same programme for different audiences. One disc can feature up to 99 playlists and register up to 999 scenes. (see picture B)

**DIGITAL PICTURES VIA PC CARD SLOT** (DMR-E100H, DMR-E65) Front-mounted SD Memory Card/PC card slots make it easy to transfer images to and from a digital still camera to a DVD disc or hard drive. You can easily view JPEGs\* from the card via the DVD recorder connected to your TV. (see picture C)



**D** DV Auto Recording



## MPEG2/4 DATA STORAGE & PLAYBACK

(DMR-E100H) You can record a video clip in MPEG4 (for transfer to an SD card) at the same time as you are recording to the hard drive (MPEG2). Use the MPEG4 viewer to select the video you want and transfer it to an SD Card at high speed. You can also copy a video (MPEG2) onto an SD Card by converting it into an SD video clip (MPEG4).

## PARTIAL DELETE AND RE-RECORDING

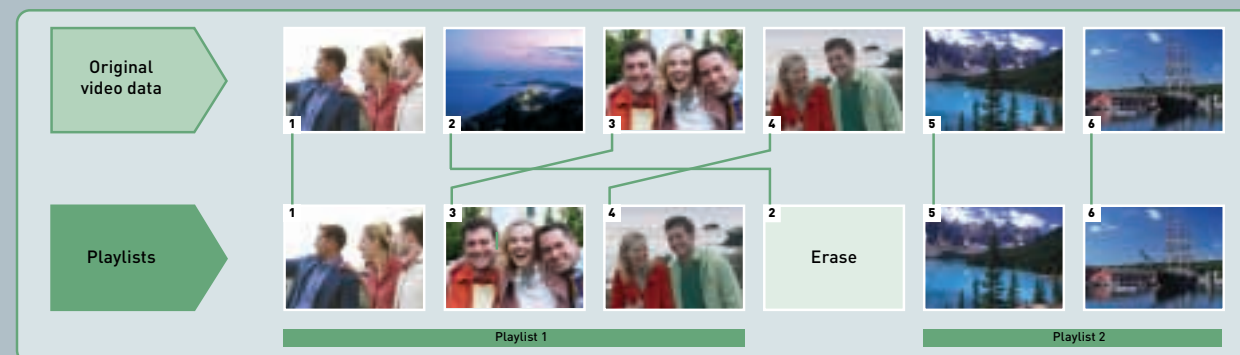
(DMR-E100H, DMR-E85H, DMR-E75V, DMR-E65, DMR-E55) Panasonic DIGA DVD Video recorders randomly access the areas of a disc which have been deleted. They then automatically use this space for new recordings.

## QUICK VIEW (X1.3)

(DMR-E100H, DMR-E85H, DMR-E75V, DMR-E65, DMR-E55) Quick View lets you play back a recording – complete with sound – at 1.3 times the normal speed. This allows you to quickly check the contents of a recording. Quick View can even be used during Chasing Playback.

## ONE-TOUCH RECORD

(DMR-E100H, DMR-E85H, DMR-E75V, DMR-E65, DMR-E55) Unlike videotape, recordable DVD means you don't have to search for blank space upon which to record. One-Touch Record seeks out the empty space on a disc before it actually begins recording. This eliminates the risk of accidentally recording over any stored programmes.



**B** Playlist Playback

**AUTO RENEWAL RECORDING** (DMR-E100H, DMR-E85H) With Auto Renewal you'll never miss your favourite soap! It automatically records a show onto the hard drive every day or every week. The most recent episode records right over the previous one.

## RELIEF RECORDING

(DMR-E100H, DMR-E85H) With our DVD Video recorders featuring hard drives, you needn't worry if you've got enough space left to record. The DMR-E100H and DMR-E85H automatically check the remaining space when you're recording onto a DVD-RAM or DVD-R disc. If there's not enough space, they'll start relief recording onto their hard drives. And if you forget to insert a recordable disc in the first place, relief recording automatically kicks in.

## DV AUTO RECORDING

(DMR-E100H, DMR-E65) Just connect a digital video camera to the DV input terminal to transfer video from the camera onto the hard drive or a DVD. DV Auto Recording automatically creates a playlist and therefore makes it easier to find the beginning of each scene or programme. With a playlist you can easily edit and customise your movies by re-arrange scenes. (see picture D)

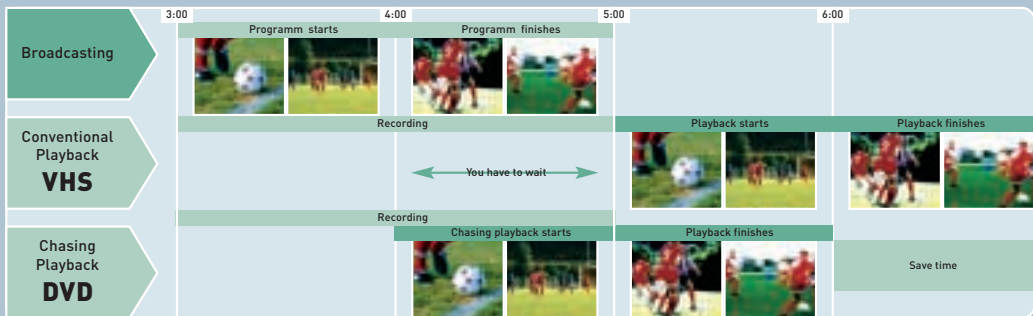
**PAL PROGRESSIVE SCAN** (DMR-E85H, DMR-E75V, DMR-E65, DMR-E55) delivers beautiful images with high resolution and detail when connected to a Plasma Panel, LCD TV or LCD Projector with Compatible inputs.

## COMPATABILITY WITH A VARIETY OF DISC FORMATS

(DMR-E100H, DMR-E85H, DMR-E75V, DMR-E65, DMR-E55) In addition to recording and playing DVD-RAM and DVD-R discs, our DIGA DVD recorders can also play two-channel DVD-Audio, audio CDs (including MP3 format), Video CDs and audio recordings on CD-R and CD-RW\*\*\*.

\* These DIGA DVD Video recorders are compatible with DCF (Design rules for Camera File system) based still picture (JPEG) file. The DMR-E65 is also compatible with TIFF (uncompressed RGB chunky) files recorded using a digital camera.

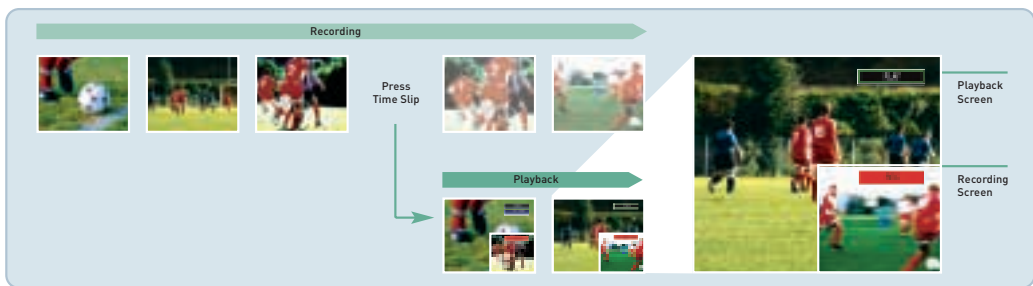
\*\*\* CD-R and CD-RW recordings conforming to CD-DA format audio are compatible. Some CD-R and CD-RW discs may not be playable due to the condition of the recording.



B Simultaneous Record & Playback

**TIME SLIP FUNCTION** (DMR-E100H, DMR-E85H, DMR-E75V, DMR-E65, DMR-E55)

**Chasing Playback** This unique DVD-RAM feature lets you begin to watch what you are recording, even as you continue to record it. (see picture A) For example, let's say you set to record a TV show for an hour from 9pm. Trouble is, you get home at 9.25pm. But why wait until the recording has finished? With a Panasonic Diga DVD Video recorder, you can start watching your show from its beginning while still continuing to record it!



C Time Slip Button



**AT THE HEART OF YOUR DIGITAL NETWORK**



IT'S NEVER BEEN SIMPLER TO CREATE YOUR OWN DVDS; RECORD YOUR FAVOURITE TV PROGRAMMES AND EASILY ACCESS OR EDIT THEM; ARCHIVE YOUR HOME MOVIES ON A DURABLE, HIGH QUALITY FORMAT; TRANSFER YOUR VIDEO, AUDIO AND DATA FROM DVD ONTO AN SD CARD FOR POCKET PORTABILITY.

DMR-E100H



DMR-E85H



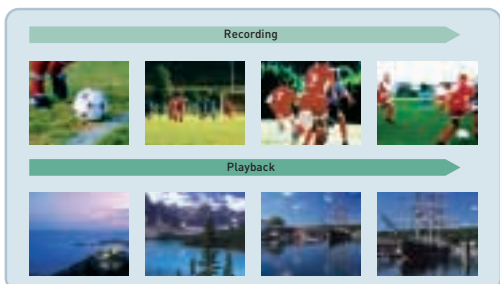
DMR-E75V



DMR-E65



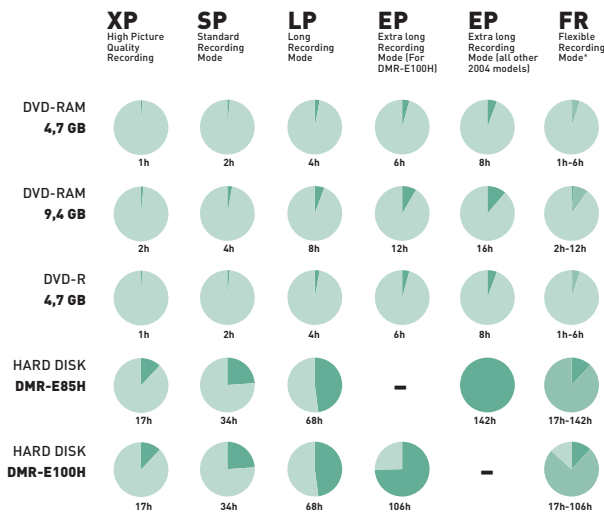
DMR-E55



A Chasing Playback: Watch a program whilst recording another

**Simultaneous Record & Playback** Our Diga models let you record and playback at the same time – great for recording episodes from a regular TV series! For example, while you're recording the current episode, you may want to watch the one you recorded last week. Provided both episodes are on the same DVD-Ram disc you can watch and record simultaneously. (see picture B)

**Time Slip Button** Press this once during a recording and you can see what you recorded 30 seconds ago – while still watching what you're recording now! Our advanced picture-in-picture mode lets you view two pictures at the same time. Want to see what was recorded more than 60 seconds ago? Use the cursor keys to return to any previous point in the programme and see it in the main picture as you continue watching the 'live' recording on the sub screen. (see picture C)



D Extended Recording Times

**EXTENDED RECORDING TIMES**

(DMR-E100H, DMR-E85H, DMR-E75V, DMR-E65, DMR-E55) Each model offers a variety of recording modes. (see graphic D) Select the recording mode that best suits your needs: for programmes where high picture quality is required (such as home movies of your children or a sports event which contains lots of fast-moving action images), XP mode will prove ideal. But for everyday programmes (such as

recording your favourite soap), EP mode offers longer record times and this saves disc space. All Panasonic Diga DVD Video recorders are compatible with blank DVD-R and DVD-RAM discs. Recording using a 4.7GB DVD-R can deliver around six hours on a single disc when you choose EP recording mode. Use a 9.4GB double sided DVD-RAM disc and you can double that capacity to 12 hours (6 hours per side). Another option is to use Flexible Recording mode: this automatically selects the best picture quality based on the recording time and how much available space there is on the disc.

**SUPER EXTENDED RECORD TIME!**

(DMR-E100H, DMR-E85H) For the ultimate in record capacity, Panasonic's combined DVD/Hard Disk Video Recorders will take some beating. As well as recording using blank discs, the latest DMR-E100H and DMR-E85H models now offer 80GB built-in hard drives – select EP recording mode and you can get up to 142 hours worth of non-stop recording using the hard drive. Record all the programmes you want to see and then play them whenever you like. You can also save programmes from the hard drive onto a blank disc or vice versa, from a DVD-RAM to the hard disk.

\* Flexible Recording (FRI): Recording the best picture quality in a freely set time.





# THE BURN THE BEST AND STORE THE REST DVD RECORDER



## YOUR DIGITAL SCRAPBOOK

With the DMR-E100H you can edit and store both your digital films and still photos on the hard disk or burn them directly on a DVD. SD Memory Card connectivity makes it incredibly simple to transfer your data to or from your other AV products and the DMR-E100H.

# DMR-E100H

**DVD-VIDEO RECORDER WITH A BUILT-IN HARD DISK** 80 GB Hard Disc + Recording onto Hard Disc (up to 106 hours), DVD-RAM (up to 12 hours on double sided disc), DVD-R (up to 6 hours) + SD-Card- and PC-Card-Slot for JPEG and MPEG 2/4 Data Storage + Playback of DVD-RAM, DVD-R, DVD-Video, DVD-Audio (2 channel), CD, CD-R/RW, JPEG (from memory card, HD or DVD-RAM), MP3 + Time Slip-function - simultaneous record and playback + chasing playback + Fast, easy recording from Hard disk to DVD-RAM or DVD-R (up to 24x on DVD-R) + Partial Delete and Recording + Front AV

## CHASING PLAYBACK

You set the DVD Recorder to start recording at 18:00, when your favourite show begins. The problem is you get home at 18:30, while the programme is still on. With Chasing Playback, you don't have to wait until the recording is finished to watch the show. You can play from the beginning while it continues to record to the end.





### DMR-E85HEBS DIGA DVD RECORDER WITH BUILT-IN HARD DISK

**DIGA**

- \* Available April 2004
- \* 80GB Hard Disk Drive
- \* In EP Mode it will record up 142 hours onto the Hard Disk, up to 16 hours (8 hours both sides) onto a 9.4GB double sided DVD-RAM disc and up to 8 hours onto a 4.7GB single sided DVD-R disc
- \* Playback of DVD-RAM, DVD-R, DVD-Video, DVD-Audio (2 channel), MP3, CD, CD-R/RW
- \* Time Slip-function - simultaneous record and playback and chasing playback
- \* 5 Recording modes: High picture quality (XP), Standard (SP), Long (LP), Extra long (EP) and Flexible recording mode (FR) to record the best quality in a freely set time
- \* Fast, easy recording from Hard disk to DVD-RAM or DVD-R (up to 32x on DVD-R in EP Mode)
- \* Copy from DVD-R to HDD
- \* PAL Progressive Scan for Plasma Displays/LCD TVs/LCD Projectors with compatible inputs
- \* New Direct Navigator
- \* Playlist Playback
- \* Auto Renewal and Relief-Recording
- \* Advanced Hybrid VBR technology for high picture quality
- \* Silver



### DMR-E65EBS DIGA DVD RECORDER

**DIGA S2**

- \* Available May 2004
- \* In EP Mode it will record up to 16 hours (8 hours per side) onto a 9.4GB double sided DVD-RAM disc and up to 8 hours onto a 4.7GB single sided DVD-R disc
- \* SD-Card and PC-Card Slot for JPEG Data Storage
- \* Playback of DVD-RAM, DVD-R, DVD-Video, DVD-Audio (2 channel), MP3, CD, CD-R/RW, JPEG (from memory card or DVD-RAM)
- \* Time Slip-function - simultaneous record and playback + chasing playback
- \* 5 Recording modes: High picture quality (XP), Standard (SP), Long (LP), Extra long (EP) and Flexible recording mode (FR) to record the best quality in a freely set time
- \* DV-in with DV Auto Recording and connectable with a PC (running WindowsXP) with DV Motion Studio VW-DTM40E/VW-DTM41E
- \* PAL Progressive Scan for Plasma Displays/LCD TVs/LCD Projectors with compatible inputs
- \* Component Output
- \* New Direct Navigator
- \* Playlist-Playback
- \* Advanced Hybrid VBR technology for high picture quality
- \* Silver

## HOME AUDIO/VIDEO

# DIGA DVD RECORDERS



### DMR-E75VEBS DIGA DVD RECORDER AND VCR COMBI

**DIGA**

\* Available June 2004

#### Common Features:

- \* One-Touch 2-way Dubbing (DVD & Video Tape) \* 2 Programme parallel Recording with Twin Tuner
- \* Large 2 colour front display (DVD and VCR)

#### DVD Recorder:

- \* In EP Mode it will record up to 16 hours (8 hours per side) onto a 9.4GB double sided DVD-RAM disc and up to 8 hours on 4.7GB single sided DVD-R disc
- \* Playback of DVD-RAM, DVD-R, DVD-Video, DVD-Audio (2 ch), MP3, CD, CD-R/RW
- \* Time Slip-function - simultaneous record and playback and chasing playback
- \* 5 Recording modes: High picture quality (XP), Standard (SP), Long (LP), Extra long (EP) and Flexible recording mode (FR) to record the best quality in a freely set time
- \* PAL Progressive Scan for Plasma Displays/LCD TVs/LCD Projectors with compatible inputs
- \* Component Outputs \* New Direct Navigator \* Playlist-Playback
- \* Advanced Hybrid VBR technology for high picture quality

#### Video Recorder:

- \* 43 seconds Jet Rewind (with 180-min. tape) \* Nicam Stereo Sound \* Video Plus and PDC \* Front AV input



### DMR-E55EBS DIGA DVD RECORDER

**DIGA**

- \* In EP Mode it will record up to 16 hours (8 hours per side) onto a 9.4GB double sided DVD-RAM disc and up to 8 hours onto a 4.7GB single sided DVD-R disc.
- \* Playback of DVD-RAM, DVD-R, DVD-Video, DVD-Audio (2 channel), MP3, CD, CD-R/RW
- \* Time Slip-function - simultaneous record and playback and chasing playback
- \* 5 Recording modes: High picture quality (XP), Standard (SP), Long (LP), Extra long (EP) and Flexible recording mode (FR) to record the best quality in a freely set time
- \* PAL Progressive Scan for Plasma Displays/LCD TVs/LCD Projectors with compatible inputs
- \* Component Output
- \* New Direct Navigator
- \* Playlist playback
- \* Partial Delete and Recording
- \* One Touch Recording
- \* Advanced Hybrid VBR technology for high picture quality
- \* Silver





**14:00**

LIKE STEPPING INTO ANOTHER WORLD  
FOR A SHORT WHILE!



### SA-XR50 DIGITAL HOME CINEMA RECEIVER

- \* Available May 2004
- \* 6 x 100W (DIN)
- \* Built-in DTS ES 96/24, Dolby Digital EX, and Dolby Pro-Logic II-Decoders
- \* Multi-Source Remaster
- \* Wide Frequency Range: 88kHz Reproduction
- \* DVD-Audio ready
- \* On-Screen-Display
- \* RDS Tuner
- \* 4 Analogue In / 1 Out
- \* 4 Digital In / 1 Out
- \* 3 S-Video In / 1 Out
- \* Bass Synthesizer
- \* Silver or Black



### SC-HT05 HOME CINEMA RECIEVER AND SPEAKERS

- \* Available May 2004
- \* 500 Watts RMS Total Power Output
- \* 5.1 channel input
- \* Dolby Digital, DTS and Dolby Pro Logic II Decoder
- \* 2-way front and rear speakers, plus 3-way centre speaker plus subwoofer

## HOME AUDIO/VIDEO

## A/V RECEIVERS / SPEAKERS



### SA-XR45 DIGITAL HOME CINEMA RECEIVER

- \* Built-in DTS ES 96/24, Dolby Digital EX, and Dolby Pro-Logic II-Decoders
- \* 6 x 100W (DIN)
- \* Double-Digital Remaster
- \* Wide Frequency Range: 88kHz Reproduction
- \* DVD-Audio Ready
- \* 6-channel input (analogue and digital)
- \* On-Screen-Display
- \* RDS Tuner
- \* Silver



### SA-XR30 DIGITAL HOME CINEMA RECEIVER

- \* Available May 2004
- \* 5 x 100W (DIN)
- \* Built-in, Dolby Digital, DTS, and Dolby Pro-Logic II-Decoders
- \* Wide Frequency Range: 88kHz Reproduction
- \* DVD-Audio ready
- \* RDS Tuner
- \* 4 Analogue In/Out
- \* 4 Digital In (20pt, 2 Coax)
- \* Silver



### SB-TP20 HOME CINEMA SPEAKER SET

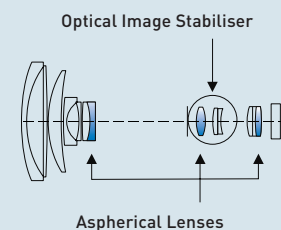
- \* 6 speaker-set
- \* 2-way 2-speaker system
- \* 100W (DIN) power input
- \* Including active Subwoofer with 100W (DIN)
- \* Magnetic shielding for home cinema use
- \* Silver



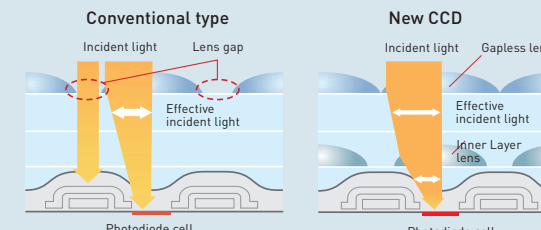
### SB-TP55 HOME CINEMA SPEAKER SET

- \* 6 speaker set
- \* 2-way 3-speaker for front and rear, 3-way 5-speaker for center
- \* 100W (DIN) power input
- \* Including active Subwoofer with 100W (DIN)
- \* DVD Audio ready
- \* Magnetic shielding for home cinema use
- \* Perfectly matching with Panasonic Plasma TV
- \* Silver aluminium finish





**B Leica Lens Technology for DMC-FZ10**



**C Total Megapixel CCD**



1x



**E Size comparison with an equivalent film camera**

**F Conversion Lenses**



Tele Conversion Lens

Wide Conversion Lens



6x



12x

**D 12x Optical Zoom**

**VENUS ENGINE LSI CIRCUITRY** Conventional LSI (Large Scale Integrated) circuit systems generate a luminous signal only using the green component of the image captured by the primary colour CCD. Panasonic's Venus Engine LSI generates a signal from all three primary colour components (red, green and blue). This improves diagonal resolution by around 50 per cent compared to previous models and results in pictures that have higher resolution and improved signal-to-noise-ratio.

**ENHANCED SENSITIVITY WITH TOTAL MEGAPIXEL CCD** The CCD employs a gapless lens design and an inner layer lens to boost sensitivity. By dramatically reducing the loss in light received by the photodiode, it delivers vivid and natural colours. (see picture C)

**12X OPTICAL ZOOM** O.I.S is particularly useful in situations where the light levels are low or macro photos where camera-shaking often occurs. And it certainly comes into its own with the new 12x optical zoom systems featured on the DMC-FZ10. (see picture D) This model may have a compact body, but remarkably, its zoom lens has a focal distance of 4.6mm to 55.2mm – that's the same as 35mm to 420mm in an equivalent 35mm camera! (see picture E). Need to get closer still or shoot from a wider angle? Two conversion lenses are optionally available for the DMC-FZ10 (see picture F). The Tele Conversion Lens gives the camera the same zoom power as a 630mm lens, while the Wide Conversion Lens will give you the same wide angle capabilities as a 28mm lens. And with F2.8 aperture across the entire zoom range, both models give you crisp, clear and sharply detailed images, whether you're shooting from a wide-angle or getting up close and personal with the 12x optical zoom.

**BURST-SHOOTING** The Venus Engine also allows for rapid, consecutive shooting. The time lag between two shots has been dramatically reduced and in burst shooting mode, four frames per second with a time lag of 0.1 seconds is possible.

**SD MEMORY CARD** Lumix cameras use SD Memory Cards which offer a large recording capacities and fast data transfer rates. Each camera is equipped with an SD Card slot and a USB port to easily download your images to a PC, printer, DVD recorder, or any compatible SD device. (see picture G)



**G SD Memory Card**

**BATTERIES** Panasonic provides a wide choice of high performance batteries for the safe and long lasting use of your Lumix camera. Our exclusive range includes standard alkaline batteries for high drain appliances, rechargeables with increased running time.

**A Optical Image Stabiliser (OIS)**



OIS off

OIS on

**OPTICAL IMAGE STABILISER (OIS)** The DMC-FX1, DMC-FX5 and DMC-FZ10 are equipped with our Optical Image Stabiliser (O.I.S) systems. (See picture A). A gyrosensor detects even the smallest hand-shake and integrally links the lens control to camera movement. Unlike digital systems and their 'pseudo' compensation, Panasonic's optical system provides precise compensation and no degradation in image quality.

**LEICA DC LENS** Leica's world-famous lenses have a superb pedigree and an enviable reputation which makes them a natural choice for Panasonic digital cameras. Our top-ranging Lumix cameras feature a lens system that has 13 elements in eight groups. (see picture B). This includes one dual-sided and two-single sided aspherical lenses. These aspherical lenses make the system more compact because they're able to compensate for spherical irregularities – a common problem in large aperture lenses. A multi-coating lens process also reduces ghosting and flare effects. The result? Superb imaging at all focal distances.

**The DMC-FX1, DMC-FX5 use the Leica DC Vario ELMARIT lens.** This lens provides excellent gradation with subtle tonal shading and a delicate soft focus effect. Pictures have expressive colouring and remarkable depth – the hallmarks of a Leica Lens.

**The new DMC-FZ10 uses an enhanced version of the Leica DC Vario ELMARIT lens.** It incorporates a single Extra-low Dispersion (ED) lens for greatly reduced colour irregularities. The ED lens offers photographers the chance to take professional and realistic-looking pictures which have warmth.

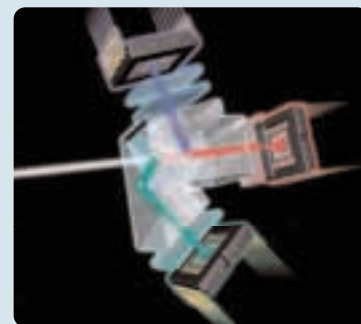
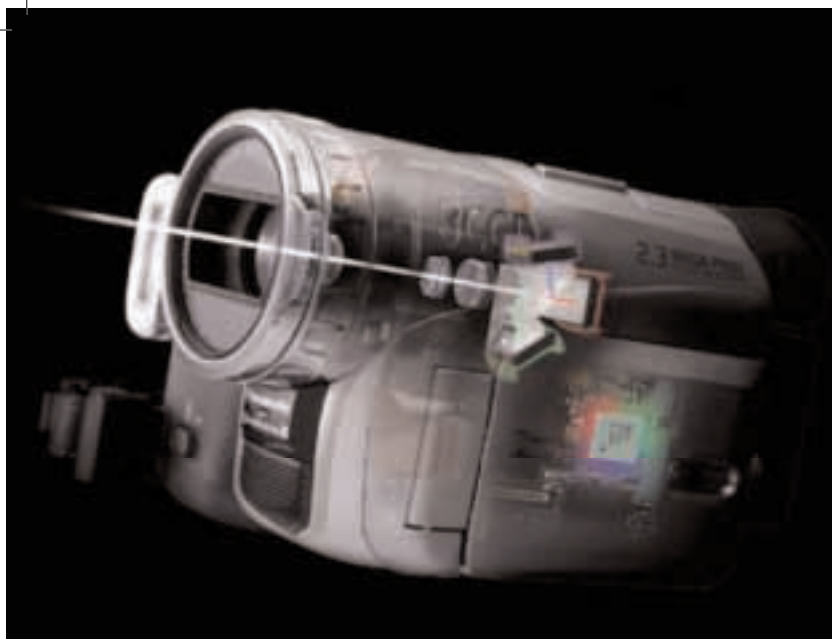
# LUMIX

## THE PERFECT MARRIAGE BETWEEN OPTICAL AND DIGITAL TECHNOLOGIES



THANKS TO THE ONGOING PARTNERSHIP WITH LEICA CAMERA AG, PANASONIC'S LUMIX RANGE OF DIGITAL CAMERAS CONTINUE TO SET NEW STANDARDS. EACH LUMIX MODEL IS DESIGNED TO HELP YOU MAKE THE MOST OF YOUR PHOTOGRAPHIC CREATIVITY.





**A** 3 CCD Camera-System



**C** Crystal Engine



**B** LEICA DICOMAR Lens

# e.cam



WHEN IT COMES TO CAMCORDERS, PANASONIC HAS ALWAYS LEAD THE WAY AND WITH THIS YEAR'S CROP OF DIGITAL MINIATURE MOVIE-MAKING MACHINES, WE'VE REDEFINED THE STATE-OF-THE-ART (AGAIN). THERE ARE NOW ELEVEN MODELS TO CHOOSE FROM IN OUR E.CAM RANGE WHICH MEANS THERE'S SOMETHING FOR EVERYONE

## LEICA DICOMAR

**LEICA DICOMER LENS** The advanced optical technology that makes Leica Camera AG a legend in the camera world is fully reflected in the 12-element, multi-coated Leica Dicomar lens. With its crisp detail, subtle rendering, and smooth, natural imaging - all Leica hallmarks - this lens can take you to the limits of your visual imagination. **(See Picture B)**

## 3CCD CAMERA SYSTEM

Because CCDs are critical to image quality, all professional video cameras use 3CCD systems. In this system, a prism splits the incident light into its three primary colors (red, green and blue) and each resultant color signal is collected by a separate CCD. The 3CCD system reproduces colors with exceptional fidelity and captures even subtle gradations. Advanced Panasonic technology has made the 3CCD system small enough for home video cameras. The GS200 and GS120, which debut as the world's smallest 3CCD cameras, deliver the images with natural, true-to-life colors anywhere you go. **(See Picture A)**

**CRYSTAL ENGINE** The new Crystal Engine is a special image processing circuit for 3CCD camera system. Processing the signal from each of the three CCDs independently, it gives both moving and still pictures exceptional quality. **■ New 3D RGB Frame Noise Reduction** A separate noise reduction circuit is used for each of the three RGB colors. Suppressing noise particularly at low illumination levels, these circuits allow bright, detailed recording even in dim lighting.

**■ AXIS (Advanced Pixel Interpolation System)** Pixel interpolation data obtained by differential calculation is used to precisely process the CCDs' output. This maximizes the effect of the Quad-Density Pixel Distribution, helping to produce clear, high-contrast images. **■ Digital Signal Processing** Unique Panasonic digital signal processing technologies deliver true-to-life detail and color, with whiter whites, deeper blacks, and superb rendering of fine details such as individual strands of hair. **(See Picture C)**

## MEGAPIXEL STILL PICTURE RECORDING

**Quad-Density Pixel Distribution**, a technology used in broadcasting, makes it possible to capture still pictures with superb megapixel quality. The tiny 2.5-micron intervals between pixels are shifted by one-half pitch both vertically and horizontally, which distributes them on the CCD with four times the density of previous systems. This lets the GS200 - the world's smallest 3CCD video camera - capture still pictures with 2.3 megapixel quality, and the GS400 with 4.0 megapixel quality. You get the outstanding detail, color and sensitivity that come with the 3CCD camera system. **(See Picture D)**



**D** Megapixel Still Picture Recording

## SIMULTANEOUS MOTION VIDEO & STILL PICTURE RECORDING

When you see a great scene, you can snap it - even while you're shooting video. This innovative function lets you shoot still pictures (VGA) without disrupting the moving pictures you're recording. You don't even have to switch recording modes. It's as if you have a digital still camera and a video camera at the same time. The moving pictures are recorded on tape, the still shots on an SD Memory Card.

**SOFT SKIN DETAIL** When this function detects skin tones, it softens the focus in that area. This has a skin beautifying effect, which makes wrinkles and lines appear less noticeable. When turned on, this function makes blemishes and moles look less conspicuous, while preserving resolution in areas of the picture outside of the skin.

**POWER LCD** Simply press a power LCD button and the LCD becomes brighter, making it easier to see outdoors or in other bright locations. Also, a new scanning technology allows the LCD to show diagonal lines more sharply.

**1.3 SEC QUICK START** The Quick Start button helps shoot videos on the spur of the moment. Just 1.3 sec. after turning on the power source, it is ready to shoot those not-to-be-missed scenes.

**DIRECT MODE DIAL & WIDE OPEN LCD** Simply look at the icons to find the mode you want, then rotate the dial to select it. A fingertip is all it takes. Also, the LCD opens a full 120 degrees (previous models opened 90 degrees), making it much easier to access the buttons. **(See Picture E)**

**THE FUTURE OF DIGITAL VIDEO CAMERAS IS HERE: DVD** Now you can record your movies straight to disc. Panasonic's new VDR-M70 and VDR-M50 DIGA video cameras use DVD-RAM technology. You get all the advantages of DVD-RAM (simple operation, easy editing, high picture quality); all the versatility of DVD; and what's more, these cameras are small enough to fit into the palm of your hand! See page 92 for more on Panasonic's DVD-RAM video cameras. **(See Picture F)**



**E** Wide Open LCD / Dial



**F** DVD Video Camera







# NV-GS120

## SUPER COMPACT 3CCD DIGITAL VIDEO CAMERA

1.77 Megapixel Still Images + Leica Dicomar Lens  
+ 2.5" Power LCD Monitor + Simultaneous Motion Video & Still  
Picture Recording + SD Memory Card + Webcam Function  
+ USB Interface (USB 2.0 compatible) + DV In- and Output

*e.cam*

### 3CCD CAMERA SYSTEM & LEICA LENS

The NV-GS120 uses three separate CCDs (the image-producing component), one each for red, green and blue (RGB), the primary colours of light. This is the same system used in professional video cameras. The combination of 3CCD electronics and the craftsmanship of the superb LEICA Dicomar lens results in the brilliant rendition of colour with detailed graduation.





### **NV-GS400B** **3 CCD DIGITAL CAMCORDER** *e.cam S*

- + 4.0 Megapixel Still Images
- + 12x Optical Zoom
- + Leica Dicomar Lens
- + Mega Optical Image Stabilizer
- + 3.5" LCD Monitor
- + Simultaneous Motion Video & Picture Recording
- + SD Memory Card
- + Webcam Function
- + Multi Manual Ring
- + USB Interface (USB 2.0 compatible)
- + DV/ Analogue In- and Output
- + Manual Functions



### **NV-GS55B** **DIGITAL VIDEO CAMERA** *e.cam S*

- + 800,000 Pixel CCD
- + 10x Optical Zoom
- + Tele Macro Mode
- + 2.5" Power LCD Monitor
- + MPEG4 Internet Movie
- + SD Memory Card
- + Simultaneous Motion Video & Picture Recording
- + Colour Night View
- + 1.3 sec. Quickstart
- + Webcam Function
- + USB Interface (USB 2.0 compatible)
- + DV/ Analogue In- and Output

### **NV-GS33B** **DIGITAL VIDEO CAMERA**

- + 800,000 Pixel CCD
- + 10x Optical Zoom
- + Tele Macro Mode
- + 2.5" Power LCD Monitor
- + Colour Night View
- + 1.3 sec. Quickstart
- + Webcam Function
- + USB Interface (USB 2.0 compatible)
- + DV In- and Output / Analogue Output

### **NV-GS22B** **DIGITAL VIDEO CAMERA**

- + same as NV-GS33B but with
- + DV/ Analogue Output only



## **PERSONAL AUDIO/VIDEO** **DIGITAL VIDEO CAMERAS**



### **NV-GS200B** **3 CCD DIGITAL VIDEO CAMERA** *e.cam S*

- + 3 CCD Camera System + 2.32 Megapixel Still Images
- + Leica Dicomar Lens + 10x Optical Zoom
- + Tele Macro Mode + 2.5" LCD Monitor
- + Simultaneous Motion Video & Picture Recording
- + MPEG4 Internet Movie + SD Memory Card
- + Webcam Function + Manual Focus Ring
- + Built-in Flash + Colour Night View
- + 1.7 sec. Quickstart + Pictbridge Compatible
- + USB Interface (USB 2.0 compatible)
- + DV/ Analogue In- and Output



### **NV-GS120B** **3 CCD DIGITAL VIDEO CAMERA** *e.cam S*

- + 1.77 Megapixel Still Images + Leica Dicomar Lens
- + 10x Optical Zoom + Telemacro Mode
- + 2.5" LCD Monitor
- + Simultaneous Motion Video & Picture Recording
- + SD Memory Card + Colour Night View
- + 1.7 sec. Quickstart + Pictbridge Compatible
- + Webcam Function
- + USB Interface (USB 2.0 compatible)
- + DV In- and Output

### **NV-GS15B** **DIGITAL VIDEO CAMERA** *e.cam S*

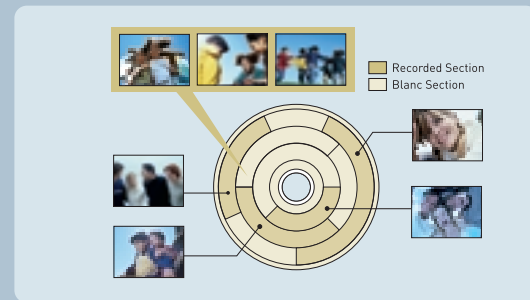
- + 24x Optical Zoom
- + 800,000 Pixel CCD
- + 2.5" LCD Monitor
- + Simultaneous Motion Video & Picture Recording
- + SD Memory Card
- + 1.3 sec. Quickstart
- + Built-in LED Light
- + Webcam Function
- + USB Interface (USB 2.0 compatible)
- + DV In- and Output

### **NV-GS11B** **DIGITAL VIDEO CAMERA**

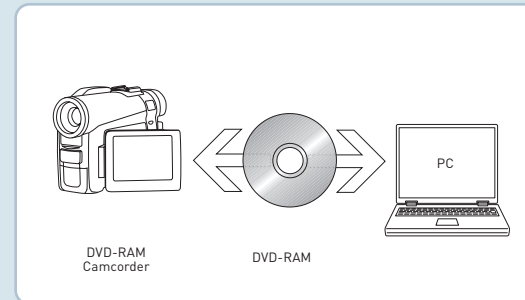
- + 24x Optical Zoom
- + 800,000 Pixel CCD
- + 2.5" LCD Monitor
- + 1.3 sec. Quickstart
- + Built-in LED Light
- + Webcam Function
- + USB Interface (USB 2.0 compatible)
- + DV Output







**A Instant Shooting**



**C Smooth PC Linking**



## THE NEW DVD RAM CAMCORDER

THIS IS A NEW CONCEPT IN DIGITAL VIDEO CAMERAS USING DVD RAM TECHNOLOGY AND WITH THE CAPABILITY OF RECORDING ONTO A DVD-RAM DISC, A DVD-R DISC OR AN SD MEMORY CARD. THE BENEFITS ARE NO DEGRADATION OF IMAGE QUALITY AND A RANGE OF EXCITING FEATURES MAKING FILMING EVEN MORE ENJOYABLE AND USER FRIENDLY. DVD-RAM AND DVD-R DISCS CAN ALSO BE PLAYED BACK ON A WIDE RANGE OF DVD RECORDERS AND PLAYERS.

MODE (Bit Rate)	DVD-RAM 2.8GB (1.4GB/side)	DVD-R 1.4GB
<b>XTRA</b> (VBR – 10Mbps)	18-60 mins per side	---
<b>FINE</b> (CBR 6 Mbps)	60 min. (30 min./side)	30 min.
<b>STANDARD</b> (CBR 3Mbps)	120 min. (60 min./side)	60 min.

**B Recording Times**

**DVD-RAM CAMCORDERS** This is an exciting concept in digital video cameras using DVD RAM technology and with the capability of recording onto a DVD-RAM disc, a DVD-R disc or an SD Memory Card. The benefits are no degradation of image quality and a range of exciting features making filming even more enjoyable and user friendly.

**INSTANT SHOOTING** Using a DVD-RAM disc there's no need to search for space to record onto – the DVD-RAM camcorder automatically searches for blank section and starts recording with a single press of a button. There is no need to worry about mistakenly over recording previously recorded footage. (See picture A)

**QUICK SCENE SEARCH** Unlike video tape, the DVD disc needs no rewinding or fast forwarding to search for specific scenes. The DVD-RAM camcorders have LCD displays which list the recorded scenes for quick, easy searching. Images recorded onto DVD-RAM or DVD-R discs can also be played back on a Panasonic DVD recorder or a 2003/4 Panasonic DVD player. This eliminates the need to connect up to a TV to view footage shot.

**NO IMAGE DEGRADATION** Because the DVD-RAM camcorders use a completely non-contact method to record and play, repeated playback does not degrade the image. Even images kept for years will not lose image quality. DVD-RAM discs can also be rewritten approximately 100,000 times making them both economical and ideal for repeated use.

**EASY EDITING** It's easy to edit and process recorded images without the need to connect to a PC. Selected scenes on a disc can be arranged into any order to create original scenarios and saved as a playlist.

**INCREDIBLY SMALL** With a new compact drive and higher-density mounting DVD-RAM camcorders have super slim bodies. Advanced miniaturisation know-how in the lens section and battery also helps these model to be the incredibly small.

**LONG RECORDING TIME** In XTRA mode advanced MPEG2 data compression is used which is called VBR (variable bit rate) to record in high quality. Real-time VDR controls the rate of MPEG2 compression depending on the scenes complexity and varies it to enable more efficient recording. In XTRA mode the DVD-RAM camcorders can record up to 60 minutes per side on a double sided 8cm DVD-RAM disc. (See picture B)

**STILL IMAGE RECORDING** In addition to moving pictures, the DVD-RAM camcorders can record still images (640 x 480 pixels) onto a DVD disc or SD Memory Card. The VDR-M70B can record 1 megapixel still pictures onto the SD Memory Card. A DVD-RAM disc can store JPEG photo data and video data together on the same disc.

**SD MEMORY CARD COMPATIBILITY** SD Memory Cards are ideal recording and storage media. They make it easy to transfer still images captured with a DVD-RAM camcorder to a digital printer or PC.

**SMOOTH PC LINKING** Standardised DVD-RAM discs are ideal for linking with other digital equipment such as a PC. The MPEG2 moving picture format can be easily processed by a PC allowing for advanced editing of image data. (See picture C)

**VDR-M70B SD DIGA**  
**DVD-RAM Camcorder** (Available June 2004)  
+ MPEG2 recording on 8cm DVD RAM/R discs  
+ Connection-Free Playback on DVD-RAM compatible recorder/players  
+ Easy Editing within the camcorder  
+ 1 MEGA-Pixel CCD  
+ 2.5" LCD Monitor  
+ 10x optical zoom / 240x digital zoom  
+ USB Interface (USB 2.0 compatible)  
+ SD Memory card slot



**VDR-M50B SD DIGA**  
**DVD-RAM Camcorder** (Available June 2004)  
+ MPEG2 recording on 8cm DVD RAM/R discs  
+ Connection-Free Playback on DVD-RAM compatible recorders/players  
+ Easy Editing within the camcorder  
+ 800,000 pixel CCD  
+ 2.5" LCD Monitor  
+ 18x optical zoom / 240x digital zoom  
+ USB Interface (USB 2.0 compatible)  
+ SD Memory card slot



**16:41**

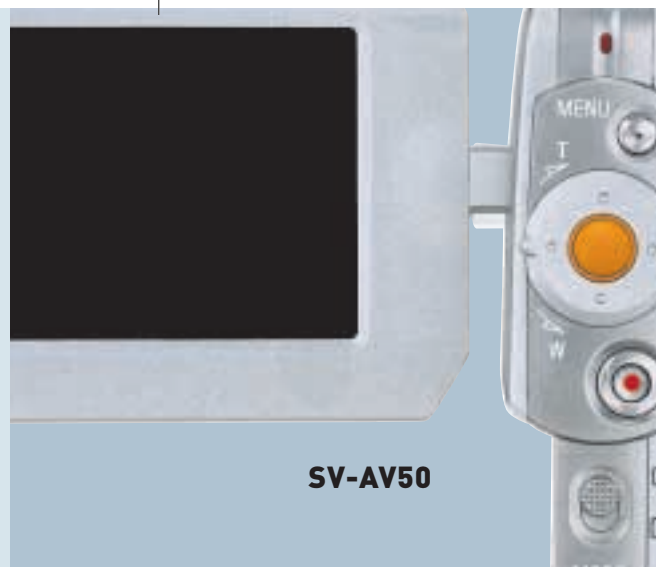
NEVER SEEN YOU ANY BETTER







**SV-AV100**



**SV-AV50**



**B Recording on 512 MB SD-Card**



**C Rotating Lens**

# D-snap

**A NEW WAY TO COMMUNICATE  
WHEREVER YOU GO**



**A Magic Action Mechanism (SV-AV50)**



**D Jog Ball**



**E Music Player**



**F Voice Recorder**



**SV-AS10**



**SV-AV25**

## 2 MEGAPIXEL PICTURE QUALITY

The **SV-AV50**, **SV-AV25** and **SV-AS10** are each equipped with 2 Megapixel Still Picture Recording. That means beautiful, high quality digital still images are possible.

The **SV-AV50** and **SV-AV25** each feature 2.5x digital zooms while the **SV-AS10** gets even closer thanks to its 4x digital zoom.

## 30 FPS FASTER VIDEO FRAME RATE

The **SV-AV50** and **SV-AV25** now feature enhanced MPEG4 video. They offer two times smoother motion, recording 320 x 240 pixel images at 30 frames per second (in Extra Fine Mode). That's the same rate as NTSC TV broadcasts and means the same level of flicker-free pictures.

**MAGIC ACTION MECHANISM** Just when you thought that D-Snap couldn't get any cooler or more stylish, it does! On the **SV-AV50** the lens and monitor unfold, ready to shoot. This helps keep the design slim and elegant, but it also protects the lens and monitor when they're not in use. For playback, the **SV-AV50** can be positioned horizontally for viewing comfort. (See **Picture A**)

**MPEG 2 VIDEO RECORDING** The **SV-AV100** can create high quality MPEG2 recordings. It comes with a 512MB SD Card – enough for around 20 minutes of video shot in Normal mode. (See **Picture B**) Alternatively, you can choose MPEG4 and Fine mode to shoot over two hours of internet quality video. The **SV-AV100** is equipped with a high density 800,000-pixel CCD for outstanding image quality – even during action shooting using Panasonic's Super Image Stabiliser. And despite the small size, it has a 10x optical zoom which brings distant objects remarkably close.

## CONVENIENT FEATURES FOR VIEWING & SHOOTING

The **SV-AV100** and **SV-AV25** each feature adjustable displays. The **SV-AV25** has a 2-inch LCD monitor and its display angle can be adjusted horizontally and vertically for easy viewing when placed on a tabletop or in the palm of your hand.

The **SV-AV100's** 2.5-inch LCD swivels so you can adjust it for the most convenient viewing position. A thumbnail display facilitates rapid access for on-the-spot playback and editing.

The **SV-AS10's** lens assembly can be rotated through 180° so you can easily capture shots from awkward or unusual angles – even take pictures of yourself! (See **Picture C**)

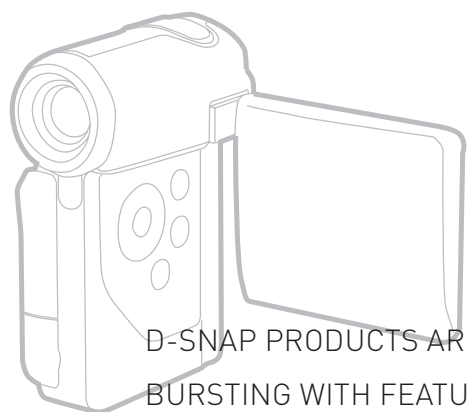
The **SV-AV50** and **SV-AS10** each feature a Jog Ball. This makes it easy to make menu selections and display images on their LCDs. (See **Picture D**)

**MUSIC PLAYER** The **SV-AV50**, **SV-AV25** and **SV-AS10** can playback music formatted in MP3 or AAC (also WMA files on the **SV-AS10**). Playlists created with SD-Jukebox v4.0 can also be played back. You can listen via the built-in speaker or using the headphones which feature a remote control\*. (See **Picture E**)

**VOICE RECORDER** Use the Voice function featured on the **SV-AV50**, **SV-AV25** and **SV-AS10** to record just audio onto the SD Memory Card – ideal for meetings and for creating voice memos. (See **Picture F**)

**TRANSFER IMAGES ONTO DVD OR PC** Easily transfer the data to and from your SD Memory Card. You can connect any D-Snap device to a Windows® PC via the USB connector. Images and data can be swapped between the units at high speed thanks to SD's fast transfer rate. Alternatively, use a Panasonic DIGA DVD Video recorder with an SD/PC card slot to store all your images onto disc.

\* except for SV-AV25 which features only stereo earphones.



D-SNAP PRODUCTS ARE BURSTING WITH FEATURES AND FUNCTIONALITY, BUT ARE SMALL ENOUGH TO FIT INTO A TOP POCKET OR BAG. THEY USE STAMP-SIZED SD MEMORY CARDS TO STORE DIGITAL DATA SUCH AS MOVIES, PHOTOS, MUSIC OR AUDIO



**POCKET-SIZED-CAMCORDER:  
READY TO FILM WHEN YOU ARE**



#### FEATURE PACKED

The SV-AV100 may be compact, but it is still feature-packed. The 10x optical zoom brings distant objects beautifully close, and the 2.5" rotating TFT LCD screen lets you check recorded video footage on the spot.



# SV-AV100

**WORLD'S FIRST MPEG2 SD DIGITAL VIDEO CAMERA** Ultra-light (156 gr.) + Ultra-small (33 x 65 x 90 mm)

+ 800.000 Pixel CCD + 10x Optical Zoom + MPEG2- and MPEG4 Recording on SD-card + JPEG Photos on SD-Card + 2,5" LCD-Screen + Includes 512MB SD Memory Card

#### D-snap



#### CREDIT-CARD-SIZE

The SV-AV100 is no bigger than a credit card and weighs only 156g because it records directly onto the included stamp-sized 512 MB SD Memory Card. The SV-AV100 literally puts MPEG2 video in the palm of your hand!





### SL-J910 PORTABLE CD PLAYER WITH 2-WAY LISTENING

- \* Docking station, also used as a charger
- \* MP3-Playback
- \* Dot Matrix LCD remote for ID3-Tag indication
- \* 115 hours MP3 /60 hours CD playback time
- \* Incl. AC Adaptor and rechargeable Ni-MH batteries
- \* In silver-blue finish



### SL-J905 PORTABLE CD PLAYER WITH 2-WAY LISTENING

- \* Removable outdoor speaker system
- \* MP3 playback
- \* Dot Matrix LCD remote for ID3-Tag indication
- \* 115 hours MP3 /60 hours CD Playback-time
- \* Incl. AC Adaptor and rechargeable Ni-MH batteries
- \* In Silver



### SL-J610V PORTABLE CD PLAYER WITH 2-WAY LISTENING

- \* Available June 2004
- \* Tower style speaker and charging station
- \* MP3 playback
- \* Digital Synthesiser Tuner for FM/AM
- \* Digital Amplifier
- \* MP3 Re-master technology
- \* 50 hours MP3 /25 hours CD play-back time
- \* Incl. AC Adaptor
- \* In Silver



### SL-MP75 PORTABLE CD PLAYER

- \* Available May 2004
- \* Dot Matrix Display for ID3-Tag indication
- \* MP3 Re-master technology
- \* 60 hours MP3 /40 hours CD playback time
- \* Incl. AC Adaptor
- \* Silver



### SL-SX428 PORTABLE CD/MP3 PLAYER

- \* Available May 2004
- \* 60 hours MP3 /40 hours CD Playback-time
- \* Incl. AC Adaptor
- \* In Silver



### SL-SX430 PORTABLE CD/MP3 PLAYER

- \* Available April 2004
- \* 60 hours MP3 /40 hours CD Playback time
- \* Incl. AC Adaptor and 6-key remote control
- \* Silver/chrome finish

### SL-MP76C PORTABLE CD PLAYER

- \* Available May 2004
- \* Same as SL-MP75, plus car accessories, adaptor and cassette included
- \* Silver

### SL-SX429C PORTABLE CD PLAYER

- \* Available May 2004
- \* Same as SL-SX428, plus car accessories, adaptor and cassette included
- \* Silver

## PERSONAL AUDIO/VIDEO



### SL-CT810 PORTABLE CD PLAYER WITH WMA PLAYBACK

- \* Dot Matrix LCD remote for ID3-Tag indication
- \* 200 hours WMA /188 hours MP3 /120 hours CD playback time
- \* Incl. AC Adaptor and rechargeable Ni-MH batteries
- \* Silver or Black



### SL-CT710 PORTABLE CD PLAYER

- \* Available May 2004
- \* MP3 Remaster Function
- \* Dot Matrix LCD remote for ID3-Tag indication
- \* 132 hours MP3 /73 hours CD playback time
- \* Incl. AC Adaptor and rechargeable Ni-MH batteries
- \* Silver or Blue



### SL-CT510 PORTABLE CD PLAYER

- \* Available May 2004
- \* MP3 Re-master Function
- \* 120 hours MP3 /80 hours CD playback time
- \* Incl. AC Adaptor and LCD Remote Control
- \* Silver, Pink, Blue or Yellow



### SL-SX330 PORTABLE CD PLAYER

- \* Available April 2004
- \* 40 hours playback time
- \* Incl. AC Adaptor
- \* Silver



### SL-SX325 PORTABLE CD PLAYER

- \* Available April 2004
- \* 40 hours playback-time
- \* Silver



### SL-SX322 PORTABLE CD PLAYER

- \* Available April 2004
- \* 40 hours playback time
- \* Incl. AC Adaptor and 6-key remote control
- \* Silver



### SL-SV570 PORTABLE CD/MP3 PLAYER WITH FM/AM TUNER

- \* Available May 2004
- \* Digital Synthesizer Tuner for FM/AM
- \* 50 hours MP3 / 25 hours CD playback time
- \* Incl. AC Adaptor
- \* Silver





### RQ-SX78V SUPER THIN PERSONAL STEREO WITH TUNER

- \* Digital Synthesizer FM/AM Tuner
- \* 5 direct access keys
- \* 30 Preset memory
- \* 45 hours tape playback
- \* Full logic Auto Reverse playback
- \* S-XBS sound
- \* Battery checker
- \* Remote control
- \* Silver-blue



### RQ-SX58V PERSONAL STEREO WITH TUNER

- \* Digital Synthesizer FM/AM Tuner
- \* 5 direct access keys
- \* 20 Preset memory
- \* 30 hours tape playback
- \* Full logic Auto Reverse playback
- \* S-XBS sound
- \* Battery checker
- \* Silver-blue



### RQ-SX76 PERSONAL STEREO

- \* Rechargeable Battery and Charger Stand
- \* Aluminium body
- \* LCD remote control
- \* A-B repeat Quick skip
- \* 100 hours. Tape playback
- \* S-XBS sound
- \* Charger stand
- \* Ni-Cd rechargeable battery control
- \* Silver



### RQ-SX57 PERSONAL STEREO

- \* Aluminium body
- \* Remote control
- \* 84 hours playback time
- \* S-XBS sound
- \* Battery checker
- \* Ni-MH rechargeable battery and charger stand included
- \* Silver

## PERSONAL AUDIO/VIDEO

## PERSONAL STEREO



### RQ-CR07V PERSONAL STEREO WITH TUNER

- \* Auto reverse playback
- \* 25 hours tape playback
- \* XBS sound
- \* Digital Synthesizer FM/AM Tuner
- \* 5 direct access keys
- \* 10 Preset memory
- \* Silver-blue



### RQ-V77 PERSONAL STEREO WITH TUNER

- \* 25 hours tape playback
- \* XBS sound
- \* LED control check (BATT/OPR)
- \* Belt clip
- \* Silver-blue



### RQ-A220 MULTI-FUNCTION CASSETTE RECORDER

- \* Can be used as a tape recorder or radio
- \* Built-in Speaker
- \* Built-in Microphone
- \* FM/AM analogue Tuner
- \* 24 hours playback time
- \* XBS
- \* Silver



### RQ-SX47 PERSONAL STEREO

- \* Aluminium body
- \* Remote control
- \* 60 hours playback time
- \* S-XBS sound
- \* LED control check (BATT/OPR)
- \* Ni-CD rechargeable battery included
- \* Silver



### RQ-CR55 PERSONAL STEREO

- \* Auto reverse playback
- \* 25 hours playback with 2 AA batteries
- \* XBS sound
- \* LED control check (BATT/OPR)
- \* Silver



### RQ-CW02 PERSONAL STEREO

- \* 24 hours playback with 2 AA batteries
- \* XBS sound
- \* Belt clip
- \* Silver





### KX-TCD430 DECT PHONE

- \* Available May 2004
- \* CL1/GAP
- \* 14 Segment Display
- \* Wall Mountable
- \* 10 Number Redial
- \* 50 Number Call Log
- \* 20 Ring Melody
- \* 20 Name & Number Phonebook
- \* 9 Hot Key Numbers
- \* 6 Multiple Handset Capability
- \* Black



### KX-TCD440 DECT PHONE

- \* Available May 2004
- \* Same specification as KX-TCD430 but with the following additional features
- \* Illuminated Keypad (Green)
- \* LCD Backlight
- \* Speakerphone on Handset
- \* Metallic instead of Black



### KX-TCD455 DECT PHONE

- \* SMS Text Messaging
- \* CL1/GAP
- \* Wall Mountable
- \* 200 Name & Number Phonebook
- \* Headset Port on Handset
- \* Speakerphone
- \* Green illuminated keypad
- \* LCD Backlight
- \* 9 Hot Keys
- \* 10 Number Redial
- \* 6 Multiple Handset Capability
- \* Metallic

### KX-TCD445 DECT PHONE

- \* Available May 2004
- \* Same specification as KX-TCD440 but includes a built-in Telephone Answering Machine with 10/20 minutes selectable recording time



### KX-FP141EC FAX MACHINE

- \* Thermal Transfer Plain Paper Fax
- \* Integral Handset
- \* 28 Page Document Memory
- \* 10 Sheet Automatic Document Feeder
- \* 30 Sheet Paper Capacity
- \* Enhanced Copier Functions
- \* 100 Speed Dials with Navigator Key

### KX-FP145EC FAX-TAM

- \* Same specification as KX-FP141EC but includes an integrated Digital Answering Machine



### KX-FC195EC FAX-TAM

- \* Thermal Transfer Plain Paper DECT Fax
- \* Fully Digital Answering System
- \* 10 Sheet Automatic Document Feeder
- \* 28 Page Document Memory
- \* Cordless DECT Handset
- \* 14 Segment LCD Display
- \* GAP Compatible
- \* Caller ID
- \* Holds 20 Telephone Numbers

## EXTRAS



### KX-TCD505 DECT PHONE

- \* CLI/GAP
- \* Walkie Talkie Mode
- \* SMS Text Messaging
- \* DOT Matrix Display/Blue LCD/6 Line Display
- \* Full Graphic Display
- \* Illuminated Keypad (Green)
- \* 3 colour Ringer LED (Red/Amber/Green)
- \* Private Ringer
- \* Wall Mountable
- \* 6 Multiple Handset Capability
- \* Metallic



### KX-TCD535 DECT PHONE

- \* CLI/GAP
- \* SMS Text Messaging
- \* Wall Mountable Handset
- \* Digital Corded Handset
- \* Dual Keypad
- \* 200 Name & Number Phonebook
- \* 50 Number Incoming Call Log
- \* 9 Hot Keys
- \* 10 Number Redial
- \* Auto Redial
- \* Metallic



### KX-TCD560 DECT PHONE

- \* Available April 2004
- \* CLI/GAP
- \* Illuminated Keypad (Green)
- \* Speakerphone
- \* Headset Jack
- \* Vibration Alert
- \* 3 colour Ringer LED (Red, Amber, Green)
- \* Full Graphic/6 line/Blue LCD Dot Display
- \* 10 Number Redial
- \* Auto Redial
- \* Silver Blue

### KX-TCD515 DECT PHONE

- \* Same specification as KX-TCD505 but includes a built-in Telephone Answering Machine with 30 minutes recording time

### KX-TCD545 DECT PHONE

- \* Same specification as KX-TCD535 but includes a Built-in Telephone Answering Machine with 30 minutes recording time

### KX-TCD580 DECT PHONE

- \* Available April 2004
- \* Same specification as KX-TCD560 but includes a built-in Telephone Answering Machine with 30 minutes recording time



### KX-FL511EC LASER FAX MACHINE

- \* Laser Plain Paper Fax
- \* Integral Handset
- \* 120 Page Document Memory
- \* 20 Sheet Automatic Document Feeder
- \* 220 Pages Paper Capacity
- \* 12ppm Print Speed



### KX-FLB756EC MINI OFFICE

- \* Flat Bed Scanner
- \* Copier
- \* Printer
- \* Fax Machine
- \* 10ppm Print Speed
- \* Integral Handset

## CAR ENTERTAINMENT AND NAVIGATION



### CN-DV2300 DVD NAVIGATION SYSTEM

- \* High speed DVD-ROM - most of Europe on one map disc
- \* GPS receiver, gyro and speed pulse sensor for perfect map matching
- \* Over 600,000 points of interest
- \* Post Code Search
- \* Auto Re-route facility

### CY-VMR5800 COLOUR MONITOR

- \* 5.8 inch widescreen colour LCD (one of a range of suitable monitors)

### CY-TM100 OPTIONAL TMC

- \* TMC - Traffic Message Channel - hide-away unit
- \* Delivers real-time traffic information onto your map
- \* Offers immediate re-route option
- \* Dramatically enhances your navigation system

TAKE THE WHEEL AND ENTER THE WORLD OF PANASONIC. A DIGITAL WORLD OF MOBILITY WHERE REALISTIC SOUND AND DYNAMIC VISUALS CREATE A COMPREHENSIVE MULTIMEDIA EXPERIENCE. AN ENVIRONMENT WHERE ADVANCED TECHNOLOGY ADDS EASE AND SAFETY TO YOUR DRIVING EXPERIENCE.



### CQ-C9800 CD PLAYER/RDS RECEIVER

- \* Digital Amplification (70W x 4) - more efficient power circuitry
- \* Radio DSP eliminates noise and interference
- \* MP3/WMA with ID3 tag
- \* Adjustable high-pass and low-pass filters
- \* Motorised Front Panel
- \* Custom display - download and personalise your display
- \* New Day and Night illumination - up to a million shades selectable

### CQ-C1400 CD PLAYER/RDS RECEIVER

- \* MP3/WMA with ID3
- \* 50W x 4, MosFet
- \* Silver Chrome Facia
- \* CD Changer Control
- \* 2 x 2.5 volt pre-outs
- \* SQ-Sound Quality System
- \* Optional remote control
- \* OEM Line-in

### DVD-RAM PRE-FORMATTED FOR VIDEO USE SUITABLE FOR VIDEO AND DATA

LM-AB120LE



<b>LM-AB120LE</b>	3x Speed	Type 2 4.7GB Single Sided With Cartridge
<b>LM-AB120LE3</b>	3x Speed	Type 2 4.7GB Single Sided With Cartridge (3 Pack)
<b>LM-AD240LE</b>	3x Speed	Type 4 9.4GB Double Sided With Cartridge
<b>LM-AD240LE3</b>	3x Speed	Type 4 9.4GB Double Sided With Cartridge (3 Pack)
<b>LM-AF120LE</b>	3x Speed	4.7GB Without Cartridge
<b>LM-AF120LE3</b>	3x Speed	4.7GB Without Cartridge (3 Pack)
<b>LM-AF120LE5</b>	3x Speed	4.7GB Without Cartridge (5 Pack)
<b>LM-AF120LE10</b>	3x Speed	4.7GB Without Cartridge (10 Pack)
<b>LM-AB120ME</b>	5x Speed	Type 2 4.7GB Single Sided With Cartridge
<b>LM-AD240ME</b>	5x Speed	Type 4 9.4GB Double Sided With Cartridge
<b>LM-AF120ME</b>	5x Speed	Type 4 4.7GB Double Sided With Cartridge
<b>LM-AK60JE</b>	2.4GB, 8cm disc for DVD-RAM Camcorders	

### DVD-R

<b>LM-RF120LE</b>	4x Speed	
<b>LM-RF120LE5</b>	4x Speed	(5 Pack)
<b>LM-RF120LE10</b>	4x Speed	(10 Pack)
<b>LM-RF120LE20</b>	4x Speed	(20 Pack)
<b>LM-RF120ME</b>	8x Speed	
<b>LM-RF120ME5</b>	8x Speed	(5 Pack)
<b>LM-RF120ME10</b>	8x Speed	(10 Pack)
<b>LM-RK30JE</b>	1.4GB, 8cm single sided disc for DVD-RAM Camcorders	



LM-RF120LE

### SD MEMORY CARDS

#### RP-SD064BE

64MB Capacity, 2MB/s Transfer Rate

#### RP-SD128BE1A

128MB Capacity, 2MB/s Transfer Rate

#### RP-SDH256E1A

256MB Capacity, 10MB/s Transfer Rate

#### RP-SDH512E1A

512MB Capacity, 10MB/s Transfer Rate

#### RP-SDH10GE1A

1GB Capacity, 10MB/s Transfer Rate



## EXTRAS

### AUDIO ACCESSORIES

#### TRAVEL SPEAKERS

##### RP-SP28E

Active/Passive speakers with a built-in amplifier delivering 1.6W output (RMS)

##### RP-SPT70

Foldable and compact with a built-in 1W + 1W amplifier and 32mm speaker units

#### MICROPHONES

##### RP-VK18

Uni-directional and ideal for vocals and karaoke

##### RP-VK25

Ideal for vocals, has a desk stand, a 3.5mm gold plated stereo jack plug and a 6.3mm adaptor is supplied.

##### RP-VC151K

Mono mic, ideal for use with an IC recorder and monaural tape recorders, a neck tie clip is supplied

##### RP-VC201K

Stereo mic, ideal for recording with mini disc or personal stereos, a neck tie clip is supplied

RF-SP28E



RP-SPT70



RP-VK18



RP-VK25



RP-VC151K



RP-VC201K



### TAPES

#### VHS

##### NV-E180HDL5

Three Hours Recording Time (5 Pack)

##### NV-E240HDL2

Four Hours Recording Time (2 Pack)

#### VHS-C FOR USE IN VHS-C CAMCORDERS

##### NV-EC45HF4

Forty Five Minutes Recording Time (4 Pack)

##### NV-EC60HF4

Sixty Minutes Recording Time (4 Pack)

#### DV TAPE FOR USE IN DV CAMERAS

**DV-M60FE** Sixty Minutes playing time

**DV-M60FE3** Triple pack of DV-M60FE

**DV-M60FE5** Five pack of DV-M60FE

**DV-M80FE** Eighty Minutes of playing time

**DV-180FE** One hundred and eighty Minutes of playing time, for use with NV-DV10000B

**DV-MC** Head cleaning tape, mini DV format

VISIT YOUR NEAREST PANASONIC CAR ELECTRONICS DEALER TO SEE THE FULL RANGE OR VISIT [WWW.PANASONIC.CO.UK](http://WWW.PANASONIC.CO.UK)