

Nikon Digital SLR Camera D40x Specifications

Type of Camera	Single-lens reflex digital camera
Effective Pixels	10.2 million
Image Sensor	RGB CCD, 23.6 x 15.8mm; total pixels: 10.75 million
Image Size (pixels)	3,872 x 2,592 [L], 2,896 x 1,944 [M], 1,936 x 1,296 [S]
ISO Sensitivity	100 to 1,600 in steps of 1 EV with additional setting one step over 1,600
Storage Media	SD memory card, SDHC compliant
Storage System	Compressed NEF (RAW): 12-bit compression, JPEG: JPEG baseline-compliant
File System	Exif 2.21, Compliant DCF 2.0 and DPOF
White Balance	Auto (TTL white-balance with 420-pixel RGB sensor), six manual modes with fine-tuning and preset white balance
LCD Monitor	2.5-in., 230,000-dot, low-temperature polysilicon TFT LCD with brightness adjustment
Playback Function	1 frame; Thumbnail (4 or 9 segments); Magnifying playback; Slide show; Histogram indication; Highlight point display; Auto image rotation
Delete Function	Card format, All frames delete, Selected frames delete
Video Output	NTSC or PAL
Interface	Hi-speed USB: Mass Storage and MTP/PTP selectable
Text Input	Up to 36 characters of alphanumeric text input available with LCD monitor and multi selector; stored in Exif header
Lens Mount	Nikon F mount with AF contacts
Compatible Lenses*1	Type G or D AF Nikkor 1) AF-S, AF-I: All functions supported, 2) Other type G or D AF Nikkor: All functions supported except autofocus, 3) PC Micro-Nikkor 85mm f/2.8D: Can only be used in mode M; all other functions supported except autofocus, 4) Other AF Nikkor**2/Al-P Nikkor: All functions supported except autofocus and 3D Color Matrix Metering II, 5) Non-CPU: Can be used in mode M, but exposure meter does not function; electronic rangefinder can be used if maximum aperture is f/5.6 or faster *1. IX Nikkor lenses can not be used *2. Excluding lenses for F3AF
Picture Angle	Equivalent in 35mm [135] format is approx. 1.5 times lens focal length
Viewfinder	Fixed-eyelevel penta-Dach mirror type; built-in diopter adjustment (-1.7 to +0.5m ⁻¹)
Eye point	18mm (-1.0m ⁻¹)
Focusing Screen	Type B BriteView Clear Matte screen Mark V with superimposed focus brackets
Viewfinder Frame Coverage	Approx. 95% (vertical/horizontal)
Viewfinder Magnification	Approx. 0.8x with 50mm lens at infinity; -1.0m ⁻¹
Viewfinder Information	Focus indications, AE lock indicator, Shutter speed, Aperture value, Exposure/Exposure compensation indicator, Exposure mode, Flash output level compensation, Exposure compensation, Number of remaining exposures, Flash-ready indicator
Autofocus	TTL phase detection by Nikon Multi-CAM530 autofocus sensor module with AF-assist illuminator (range approximately 0.5-3.0m/1 ft. 8 in.-9 ft. 10 in.); Detection range: -1 to +19 EV (ISO 100 at 20°C/68°F)
Lens Servo	1) Autofocus (AF): Instant single-servo AF (AF-S); continuous servo AF (AF-C); auto AF-S/AF-C selection (AF-A); predictive focus tracking automatically activated according to subject status, 2) Manual focus (M)
Focus Area	Can be selected from three focus areas
AF Area Modes	1) Single Area AF, 2) Dynamic Area AF, 3) Dynamic Area AF with Closest Subject Priority
Focus Lock	Focus can be locked by pressing shutter-release button halfway (single-servo AF) or by pressing AE-L/AF-L button
Exposure Metering System	TTL exposure metering system 1) 3D Color Matrix Metering II (type G and D lenses); Color Matrix Metering II (other CPU lenses); metering performed by 420-pixel RGB sensor 2) Center-weighted: Weight of 75% given to 8mm circle in center of frame 3) Spot: Meters 3.5mm circle (about 2.5% of frame) centered on active focus area
Exposure Metering Range	1) 0 to 20 EV (3D Color Matrix or center-weighted metering), 2) 2 to 20 EV (spot metering)
Exposure Modes	Digital Vari-program (Auto, Auto [Flash Off], Portrait, Landscape, Child, Sports, Close Up, Night Portrait) Programmed Auto (P) with flexible program; Shutter-Priority Auto (S); Aperture-Priority Auto (A); Manual (M)
Exposure Compensation	±5 EV in increments of 1/3 EV
Exposure Lock	Exposure locked at detected value with AE-L/AF-L button
Shooting Modes	1) Single frame shooting mode, 2) Continuous shooting mode: approx. 3 frames per second, 3) Self-timer mode, 4) Delayed remote mode: 2 s delay, 5) Quick-response remote mode
Shutter	Electronically controlled vertical-travel focal plane shutter, 30 to 1/4,000 s in steps of 1/3 EV, bulb
Sync Contact	X-contact only; flash synchronization at up to 1/200 s

Flash Control	1) TTL: TTL flash control by 420-pixel RGB sensor. i-TTL balanced fill-flash for digital SLR and standard i-TTL fill-flash for digital SLR available when CPU lens is used with Built-in Flash, SB-800, SB-600, and SB-400, 2) Auto aperture: Available with SB-800 with CPU lens, 3) Non-TTL Auto: Available with Speedlights such as SB-800, 80DX, 28DX, 28, 27, and 22s, 4) Range-priority manual: Available with SB-800
Flash Sync Modes	Auto, auto with red-eye reduction; fill-flash and red-eye reduction available with optional Speedlight Auto, auto slow sync, auto slow sync with red-eye reduction; slow sync and slow sync with red-eye reduction available with optional Speedlight Fill-flash and red-eye reduction available with optional Speedlight Fill-flash, rear-curtain with slow sync, slow sync, slow sync with red-eye reduction, red-eye reduction Fill-flash, rear-curtain sync, red-eye reduction
Built-in Flash	Auto flash with auto pop-up P/S/A/M: Manual pop-up with button release Guide number (ISO 100, m/ft.): approx. 12/39 (manual full 13/42) -3 to +1 EV in increments of 1/3 EV Standard ISO hot-shoe contact with sync, signal, and ground contacts and safety lock
Flash Compensation	Electronically controlled timer with duration of 2, 5, 10 or 20 s
Accessory Shoe	Via Wireless Remote Control ML-L3 (optional)
Self-timer	One Rechargeable Li-ion Battery EN-EL9; charging voltage (Quick Charger MH-23): 7.4V DC, AC Adapter EH-5 (available separately; requires optional AC Adapter Connector EP-5)
Remote Control	1/4 in. (ISO1222)
Power Source	Approx. 126 x 64 x 94mm (5.0 x 2.5 x 3.7 in.)
Tripod Socket	Approx. 495g (1 lb. 1 oz.) without battery, memory card or body cap
Dimensions (W x D x H)	Rechargeable Li-ion Battery EN-EL9, Quick Charger MH-23, USB Cable UC-E4, PictureProject, Rubber Eyecup DK-16, Camera Strap, Body Cap BF-1A, Eyepiece Cap DK-5, Accessory Shoe Cap BS-1
Weight	Wireless Remote Control ML-L3, Capture NX, Camera Control Pro, AC Adapter Connector EP-5, AC Adapter EH-5, Video Cable EG-D100, Semi-Soft Case CF-DC1, Speedlight SB-800, SB-600, SB-400, R1C1
Supplied Accessories*	*Supplied accessories may differ depending on country or area.
Optional Accessories	The following SD memory cards have been tested and approved for use in the D40x: • SanDisk 64MB, 128MB, 256MB, 512MB, 1GB, 2GB*1, 4GB*1,2 • Toshiba 64MB, 128MB, 256MB, 512MB, 1GB, 2GB*1, 4GB*1,2 • Panasonic 64MB, 128MB, 256MB, 512MB, 1GB, 2GB*1, 4GB*1,2 • Lexar 128MB, 256MB, 512MB, 1GB, 2GB*1 *1. If card will be used with card reader or other device, check that device supports 2GB and 4GB cards. *2. SDHC compliant. If card will be used with card reader or other device, check that device supports SDHC.

Memory Card Capacity and Image Quality/Size	The following table shows the approximate number of pictures that can be stored on a 1GB Panasonic Pro HIGH SPEED memory card at different image quality and size settings.			
Image quality	Image size	File size*1	Number of available shots*1	Number of consecutive shots available*1,2
RAW	—	9.0MB	79	6
	L	4.8MB	129	100
FINE	M	2.7MB	225	100
	S	1.2MB	487	100
	L	2.4MB	251	100
NORMAL	M	1.3MB	431	100
	S	0.6MB	888	100
	L	1.2MB	487	100
BASIC	M	0.7MB	839	100
	S	0.3MB	1,500	100
RAW+BASIC	—/L	10.1MB*3	70	6

*1. All figures are approximate and assume average file size; actual file size and memory card capacity may vary with scene recorded and make of memory card.
*2. Maximum number of frames that can be taken before shooting stops. Actual number of photos that can be taken before buffer fills may vary with make of memory card. Additional photographs can be taken as soon as enough memory is available in buffer.
*3. Total file size of NEF (RAW) and JPEG images.

Online Video Tutorial - Digitutor http://www.nikondigitutor.com/index_eng.html				
--	--	--	--	--

● Macintosh®, Mac OS, and QuickTime are trademarks of Apple Computer, Inc. ● Microsoft® and Windows® are registered trademarks of Microsoft Corporation. ● The SD logo is a trademark of the SD Card Association. ● The SDHC logo is a trademark. ● Adobe, Acrobat and Adobe Reader are registered trademarks of Adobe Systems Inc. ● PictBridge is a trademark.
● All other products and brand names are trademarks or registered trademarks of their respective companies. ● Images on LCDs and monitors shown in this brochure are simulated.
Specifications and equipment are subject to change without any notice or obligation on the part of the manufacturer. March 2007
©2007 NIKON CORPORATION

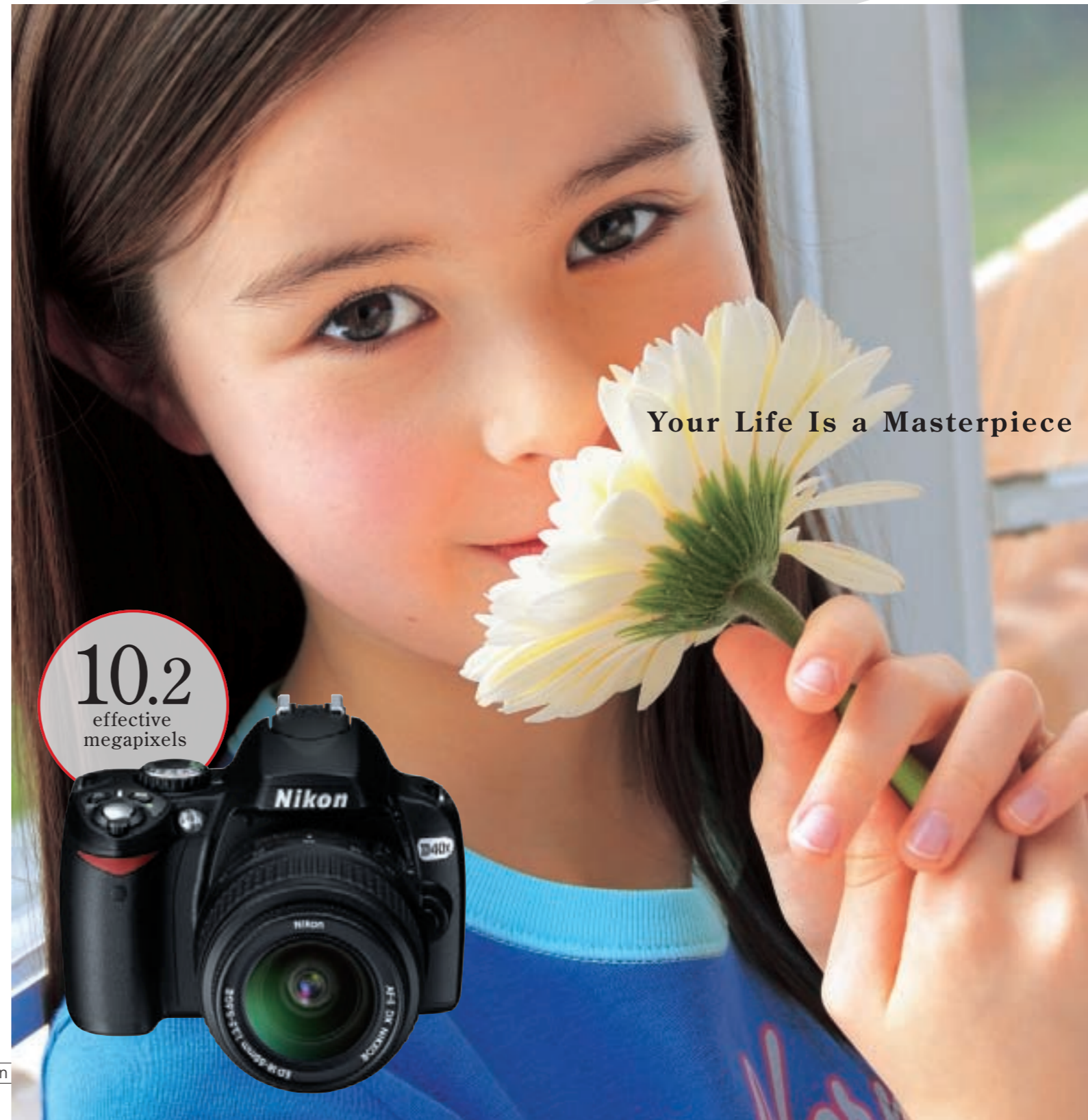
WARNING TO ENSURE CORRECT USAGE, READ MANUALS CAREFULLY BEFORE USING YOUR EQUIPMENT. SOME DOCUMENTATION IS SUPPLIED ON CD-ROM ONLY.

Nikon CORPORATION
Fuji Bldg., 2-3, Marunouchi 3-chome, Chiyoda-ku,
Tokyo 100-8331, Japan
<http://nikonimaging.com/>



At the heart of the image

DIGITAL SLR CAMERA D40x



Your Life Is a Masterpiece

nik Software
UPPOINT TECHNOLOGY by Nik Software
Hi-Speed CERTIFIED USB
Exif Print
PictBridge
SD HC
Certified for Windows Vista
NIKON PHOTO CONTEST INTERNATIONAL 2006-2007
Red by FotoNation

Beauty and passion. Color and motion. Do you see these things in your life? With the Nikon D40x, you will. With its fast responses, vibrant color, 10.2-megapixel resolution and unmatched Nikkor lens quality, you'll always be ready to capture the wonder of life. The D40x is lightweight, portable and designed to enhance the entire camera experience, with every feature, button and menu working together for a smooth, seamless performance that brings out the best in you and your images. Why? Because life is a work of art, and your life is a masterpiece in progress. Capture it, with the D40x.

Welcome to the World of Nikon

10.2
effective
megapixels



The D40x is exclusively designed for use with AF-S and AF-I Nikkor lenses, which are equipped with an autofocus motor.



So Refined, So Rewarding

Incredible pictures have never been simpler



Taking great pictures doesn't have to be complicated. The D40x proves that everyone can have Nikon-quality images and performance without sacrificing simplicity and fun. Just turn on AUTO mode, look through the clear, bright viewfinder and shoot. Powerful, high-quality, 10.2-megapixel photography has never been easier. The large 2.5-inch LCD monitor and corresponding menus are all designed to be simple to view, share and navigate.

Use the large, bright 2.5-inch LCD monitor to reduce or enlarge your image size up to 25 times (large images).



Handy Help Menu

The D40x's help menu works like a built-in instruction manual, with advice and directions for every camera setting at the press of a button. It's easy: press the ? button on the back of the camera for detailed information about particular functions. Simple, helpful information is then displayed on the bright back LCD panel, so you're always prepared.

Nikon Exclusive Feature System #1: 3D Color Matrix Metering II

Cameras see light differently than we do, but Nikon's incredible 3D Color Matrix Metering II gets accurate and vivid colors for every photo you take, automatically. Thanks to its built-in database of over 30,000 lighting scenarios, the D40x calculates appropriate exposures for contrast, color, highlights and shadows no one else can deliver. It's like having a seasoned professional at your fingertips. Just point and shoot.





So Quick, So Confident

Life looks different when time stands still

Life is full of surprises. Are you ready for them? With the D40x, you will be. Its 0.18-second startup means there's no waiting around for the camera, and the multiple shutter speeds (up to 1/4000th of a second!) can freeze just about any action: sports, wildlife, children, even splashing water! The D40x is also equipped with a minimal shutter release time lag and a fast, razor-sharp autofocus system, so you'll always be prepared to capture the drama of life as it happens.



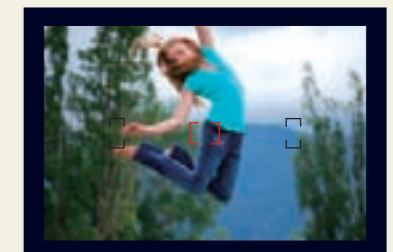
High-speed Continuous Shooting

Timing is everything in photography, so why not increase your chances of capturing the right moment with high-speed continuous shooting? Just hold down the shutter release button in continuous mode and you can take up to 100 frames at as fast as 3 frames per second. Great for sports and action pictures, as well as portraits or other people shots, as facial expressions can change quickly.



Nikon Exclusive Feature System #2: Multi-CAM 530 AF Sensor Module

Sharp focus can make or break an action shot, so when it comes to a quick focusing system, the D40x has you covered. The key is Nikon's exclusive three-area Multi-CAM 530 AF Sensor Module. Nikon's class-leading technology is at the heart of the system, so you'll get incredibly fast response. The result: pin-sharp images, even when your subjects are moving or dimly lit.





So Bright, So Brilliant

Nikon flash technology: warmth and brilliance

Great light makes great pictures.

That's why the D40x uses Nikon's incredible Built-in Flash technology,

ensuring soft, natural light — even

in dark or backlit situations. The camera does all the calculations for you, and AUTO mode makes

it simple: just point and shoot, and the Built-in Flash pops up when needed to apply

the right amount of light. Together with Nikon's wide array of external

Speedlights, sophisticated flash photography becomes fast and fun.



Without flash



Versatile Speedlight: SB-400

You'll be amazed at what a little extra light can do. The new SB-400 Speedlight was designed small, portable and easy to use. Its large guide number means it can throw light for much greater distances, and it can be tilted for the soft, natural light of a bounce flash. Nikon's exclusive i-TTL system is built-in, ensuring accurate, consistent results.



SB-400 attached to the D40x



Direct flash with the SB-400



Bounce flash with the SB-400

Nikon Exclusive Feature System #3: i-TTL Flash Control

Lighting used to be a delicate business, but Nikon's industry-leading i-TTL (Through The Lens) flash control technology makes it simple, quickly evaluating and calculating each scene's ideal lighting, even in difficult backlighting situations. Another picture, another calculation and another ideal exposure. Instantly. The D40x does all the work for you. It's never been easier, more accurate or more consistent — thanks to Nikon's advanced technology.



So Flexible, So Versatile

CREATIVE PHOTOGRAPHY WITH A TWIST: THE D40x'S EASY MODE DIAL.

With the D40x, you can get great pictures in almost any situation.

The eight Digital Vari-Programs automatically calculate ideal settings for common shooting situations. Just select a mode appropriate to your shooting situation and let the D40x do the rest.



AUTO **AUTO:** This automatic "point-and-shoot" mode lets you concentrate on getting the shot. Settings are controlled automatically to match shooting conditions.

•Lens: AF-S DX Zoom-Nikkor 18-55mm f/3.5-5.6G ED II •Exposure mode: [AUTO] 1/125 second, f/5.6 •White balance: Auto •Sensitivity: ISO-equiv. 200

Auto (Flash Off): Low light doesn't have to mean dark pictures. The Auto (Flash Off) mode automatically disables the Built-in Flash and boosts the camera's light sensitivity, letting you capture the ambiance of available light or capture photos where flash photography isn't an option.

•Lens: AF-S DX VR Zoom-Nikkor 55-200mm f/4-5.6G IF-ED •Exposure mode: Digital Vari-Program [Auto (Flash Off)] 1/200 second, f/4.2 •White balance: Auto •Sensitivity: ISO-equiv. 100

Portrait: Sophisticated portraits are easy in this mode. The background will soften while your subject stays sharply focused in the foreground. The result is stylish, professional-looking images of your loved ones.

•Lens: AF-S DX VR Zoom-Nikkor 55-200mm f/4-5.6G IF-ED •Exposure mode: Digital Vari-Program [Portrait] 1/200 second, f/5.6 •White balance: Auto •Sensitivity: ISO-equiv. 100

Landscape: Ideal for a great perspective on beautiful scenery, this mode offers sharp, clear landscape pictures with optimized greens and blues.

•Lens: AF-S DX Zoom-Nikkor 18-55mm f/3.5-5.6G ED II •Exposure mode: Digital Vari-Program [Landscape] 1/160 second, f/9 •White balance: Auto •Sensitivity: ISO-equiv. 400



Child: This mode ensures natural skin tones set against vividly rendered clothing and background details. Images here are expressive, sharp and endearing.

•Lens: AF-S DX VR Zoom-Nikkor 55-200mm f/4-5.6G IF-ED •Exposure mode: Digital Vari-Program [Child] 1/640 second, f/4.5 •White balance: Auto •Sensitivity: ISO-equiv. 200

Sports: Capture motion clearly with Sports mode. The camera tracks your subject, adjusting the focus with split second response, freezing action for incredible sports and motion shots.

•Lens: AF-S DX VR Zoom-Nikkor 55-200mm f/4-5.6G IF-ED •Exposure mode: Digital Vari-Program [Sports] 1/320 second, f/5.6 •White balance: Auto •Sensitivity: ISO-equiv. 400

Close Up: Discover the beauty in details. Flowers, coins, insects and other small treasures take on new meaning when seen in Close Up mode, which renders a detailed foreground, while softening the background for subjects that truly stand out.

•Lens: AF-S VR Micro-Nikkor 105mm f/2.8G IF-ED •Exposure mode: Digital Vari-Program [Close Up] 1/100 second, f/3.2 •White balance: Auto •Sensitivity: ISO-equiv. 400

Night Portrait: This mode focuses on the closest subject in a low-light situation and then calculates a balanced exposure for both the foreground and the background. For the sharpest pictures, a tripod is highly recommended.

•Lens: AF-S DX VR Zoom-Nikkor 18-200mm f/3.5-5.6G IF-ED •Exposure mode: Digital Vari-Program [Night Portrait] 1 second, f/3.8 •White balance: Auto •Sensitivity: ISO-equiv. 100 •Built-in Flash: TTL

So Helpful, So Capable

All the versatility, simplicity and functionality you need for great pictures

Infrared receiver

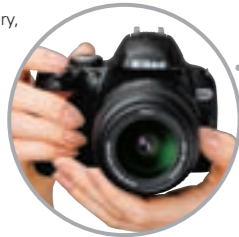
Perfect for self-portraits, or long exposures when touching the shutter release button could cause camera shake, the optional Wireless Remote Control ML-L3 is cordless, allowing you to release the shutter from a distance.



Sure and comfortable ergonomics

At only 495g*, this small, light, compact camera body is designed to comfortably fit to your hand, with a sure grip and easy access to controls.

*Without battery, memory card or body cap



Built-in Flash

126mm (5.0 in.)

94mm (3.7 in.)

Exposure compensation

Exposure compensation is available with P/S/A/M modes and can be very important for properly exposed pictures of extremely bright or dark subjects. Increase the compensation for accuracy with extremely bright colors. For scenes dominated by dark colors, simply lower the compensation for pictures as your own eyes see them.



0 +1 EV
-1 EV 0

Long-lasting battery

The Rechargeable Li-ion Battery EN-EL9 lets you take up to 520 shots per charge (CIPA Standards). And optional AC Adapter EH-5 can be used to power the camera for extended periods (AC Adapter Connector EP-5 required — available separately).



EN-EL9

Information display formats

Choose the format you like — Classic, Graphic or Wallpaper — for Digital Vari-Program and P/S/A/M modes.

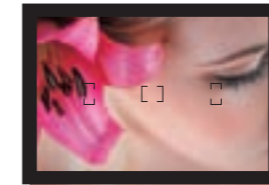


Simpler, streamlined operation

Fewer buttons, fewer complications. The D40x's streamlined design gives great photography a newfound simplicity. To show pictures on the LCD monitor, simply press the button. Press the button to display, change or select features and settings via the bright, clear LCD. Use the and buttons to reduce and enlarge the size of the images. You can even view up to nine thumbnail-sized pictures at once.

Clear, simple viewfinder

The D40x's bright, sharp optical viewfinder helps you achieve ideal composition.



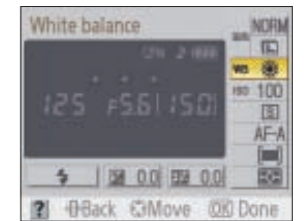
Shooting information button

AE-L/AF-L button Mode dial Command dial

Multi selector

Easy setting changes with assist images

Want to learn more about each camera setting? No problem! Just press the button. All the major camera settings can be viewed and changed on the LCD monitor easily and quickly, while useful "assist images" help you select the ideal setting for your picture.



1. Press button to show shooting information. Then press button to choose a setting.



2. See assist images for your reference and press button when you make your selection.

Broad ISO sensitivity range

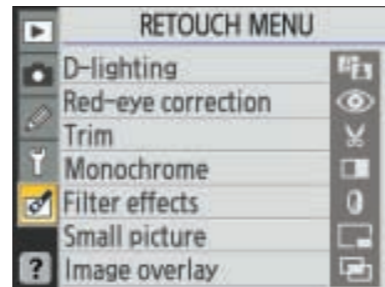
Your D40x has a wide range of ISO settings: from 100 to 1600, plus one step higher (HI 1). The result: faster shutter speed capability and beautiful images without a flash in many low-light situations, all free of blur from camera-shake or subject movement.



ISO 800

Retouch menu

Take advantage of the amazing in-camera image editing features built into the Retouch menu. The D40x makes it easy to crop, edit and enhance your images, all without the use of a computer. The Retouch menu includes Red-eye correction for correcting the red-eye effect caused by flash, Filter effects for changing an image's color balance and Image overlay for creating a double-exposure out of two selected RAW images. Simply select an image, choose an effect and press , and your new image is created and saved additionally on the memory card, leaving the original image intact.



There are seven different types of in-camera editing functions available with the D40x.



Monochrome: Give any in-camera image monochrome effects such as black and white, sepia tone (like antique photos) and cyanotype (B&W with a blue tint).

D-lighting: This amazing feature enhances the brightness and contrast of any in-camera image. Now pictures that were "almost perfect" can be even better. Ever had a picture where the faces were too dark? D-lighting may be the solution. It works wonders on pictures taken in low light, mixed lighting or backlighting, adding extra punch to drab indoor images and drawing out colors muted by poor lighting.



Before After

So Much Fun, So Much Freedom

Expand your horizons further with more lenses, software and accessories



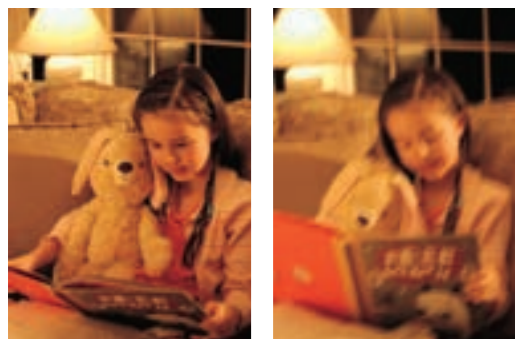
Capturing Distant Subjects Is a Breeze

Loaded with powerful 3.6x zooming capability in a light and compact body, the new, affordable **AF-S DX VR Zoom-Nikkor 55-200mm f/4-5.6G IF-ED** lens helps you get closer to the excitement. It's ideal for capturing sports, wildlife and the great outdoors. And since Nikon's advanced VR technology is built in, you can minimize the problem of camera shake common when shooting with a telephoto lens.



*The D40x is designed for AF-S and AF-I CPU lenses equipped with an autofocus motor. Moreover, most of the world-famous F-mount Nikkor lenses can be used with manual focus.

•Lens: AF-S DX VR Zoom-Nikkor 55-200mm f/4-5.6G IF-ED •Exposure mode: [S] 1/2500 second, f/5.6
•White balance: Auto •Sensitivity: ISO-equiv. 400



VR ON VR OFF

Nikon's dependable Vibration Reduction (VR) system

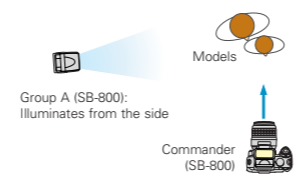
Even in low light, Nikon's exclusive VR system helps prevent blur caused by camera movement. The VR system is built into the lens, not in the camera body, which means each VR lens can work on its own optimized algorithms, and you get a steady view while composing. The result: accuracy, efficiency and remarkably sharp pictures.



•Lens: AF-S DX VR Zoom-Nikkor 55-200mm f/4-5.6G IF-ED •Exposure mode: [M] 1/100 second, f/5 •White balance: Auto •Sensitivity: ISO-equiv. 100

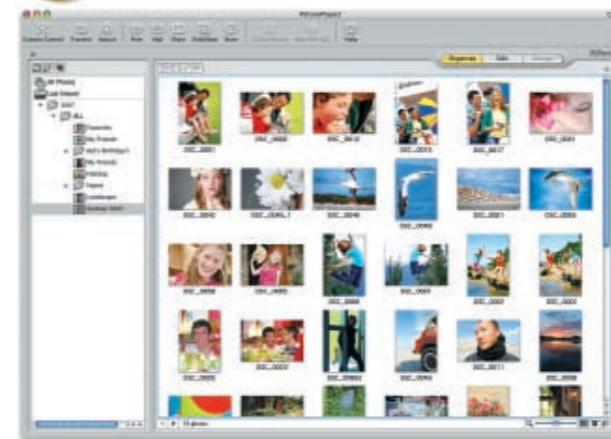
Let Your Ideas Shine with Nikon's Creative Lighting System

When you're ready for more creative flash photography, try the Nikon Creative Lighting System's SB-800 and SB-600 Speedlights. Simple and intuitive, they make the procedures of advanced, wireless and multiple-flash photography much easier than you might think. And with Nikon's reliable i-TTL flash control, you can always expect consistently accurate exposures.



SB-800 attached to the D40x

See, Show and Share with PictureProject



PictBridge lets you print pictures directly from your camera. It's fun, fast and simple: just connect to any compatible printer using the supported USB.



Nikon's PictureProject comes with every D40x, helping digital photographers of any level organize, enhance and share their images quickly and easily. The software makes uploading and sharing your images a simple, seamless experience, while placing basic post-production features like Red-eye correction and color enhancement at your fingertips. Just install PictureProject into a personal computer and you'll be able

to print, adjust color and brightness, email photos and upload them to an online community. You can even create slideshows with your favorite music! It's designed to be fun and intuitive without being overly technical, so enjoy your images. PictureProject shows you how!



Capture NX: Refined Control, Radically Simple

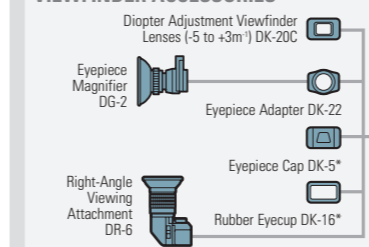


The key to this amazing piece of software is exclusive U Point™ Technology, by Nik Software, which makes both radical and subtle image enhancements as easy as a few clicks. Want the sky a more vivid blue? No problem. Want warmer skin tones? Easy. Capture NX does all the calculations for you, which makes it the first piece of post-production software that nearly anyone can master quickly and easily.

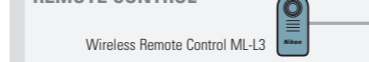


SYSTEM CHART

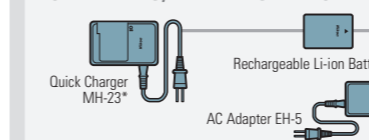
VIEWFINDER ACCESSORIES



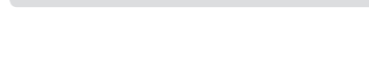
REMOTE CONTROL



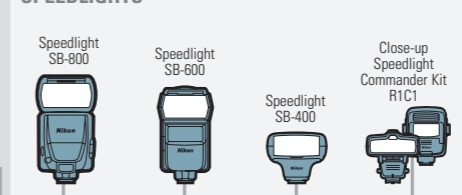
AC ADAPTERS, BATTERIES AND CHARGERS



CASE



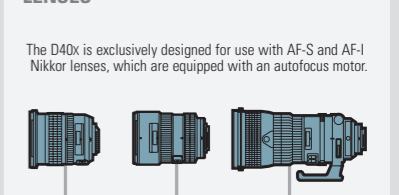
SPEEDLIGHTS



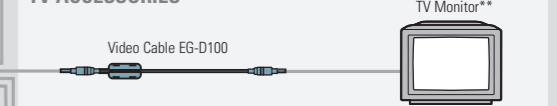
DIGISCOPING ACCESSORY



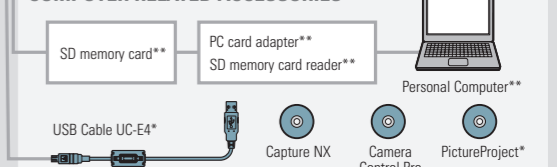
LENSES



TV ACCESSORIES



COMPUTER RELATED ACCESSORIES



*Supplied accessories **Non-Nikon products