



KONICA MINOLTA

DiMAGE A200

8.0
Megapixels

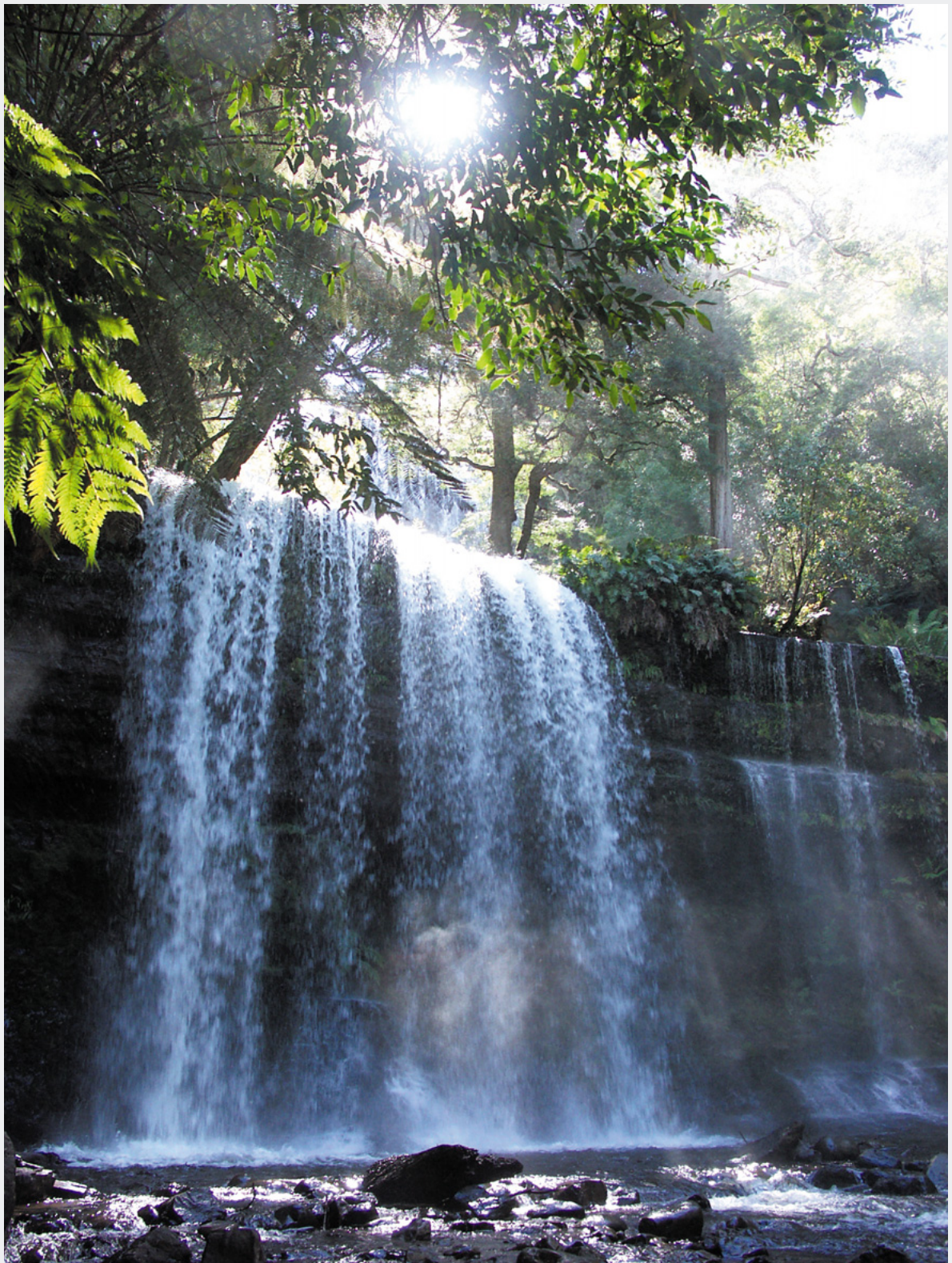
28x
Total Zoom



Beauty, Ease...Imaging at Its Best

*8.0 megapixel resolution, superior optics and
Anti-Shake technology in a versatile and easy-to-use camera.*





Shooting Data

Shutter speed: 1/100 second

F-stop: F3.5 (28mm*)

Exposure mode: Aperture priority

*35mm film camera equivalent

Beautiful Images, Versatile Functions, Easy Shooting



- Anti-Shake
- 8.0 Megapixels
- Advanced LSI + CxProcss™ III
- 28 – 200 mm*/F2.8 - 3.5 GT APO Lens
- Vari-angle LCD Monitor

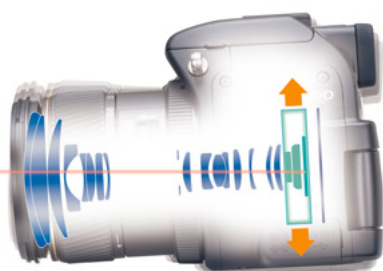
* 35mm film camera equivalent

DiMAGE A200



Shooting Data
 Shutter speed: 1/60 second
 F-stop: F3.5 (28mm*)
 Exposure mode: Aperture priority
 *35mm film camera equivalent

The Anti-Shake Advantage: Clear, Sharp Shots



Angular velocity sensors detect camera shake, then the SIDM (Smooth Impact Drive Mechanism) actuator shifts the CCD vertically or horizontally to compensate. You get clear, beautiful images and don't have to use your tripod as often.

Beautiful sunset, telephoto and macro shots – thanks to Anti-Shake technology with CCD-shift mechanism

It's so easy to capture beautiful shots. Konica Minolta's Anti-Shake technology shifts the CCD to compensate for the vibrations that occur with handheld shooting. This includes gradual body movements made when shooting sunset and other low-light scenes, and fine hand movements made when taking telephoto or macro shots. You get clear, sharp shots, and you can shoot with shutter speeds up to eight times longer (3 stops)* than you can using a digital camera without such technology. Anti-Shake also helps you capture finer images when taking movies.

*The shake compensation value (increment) depends on the shooting conditions.

Anti-Shake makes it easy to capture clear, crisp images, even if your hands are not completely still.



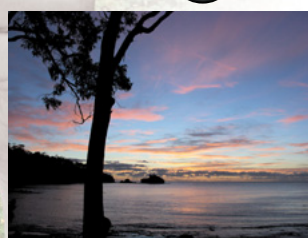
Anti-Shake effect with telephoto zooming



ON



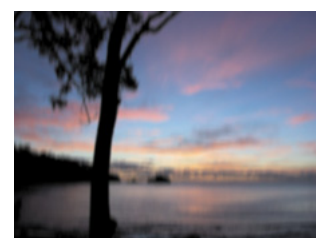
OFF



Anti-Shake effect in dim lighting



ON



OFF



Shooting Data
 Shutter speed: 1/250 second
 F-stop: F5.6 (28mm*)
 Exposure mode: Aperture priority
 *35mm film camera equivalent

Imaging Technologies that Unleash the 8.0 Megapixel Power

Beautiful Photos Approaching Film-Level Resolution **8.0 Megapixel Interlace Scanning 2/3 inch CCD**

With its 8.0 megapixel resolution, the DiMAGE A200 is a remarkable photographic tool. Create subtle, expressive images. Take rich, beautiful portraits of people you love. Capture landscapes in breathtaking detail. The large, 2/3 inch CCD provides intricate detail for outstanding, photo-quality 300-dpi images at almost A4 size (27.6 x 20.7 cm/10.8 x 8.1 inches).

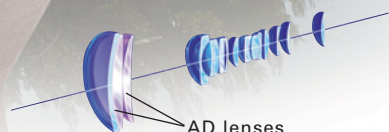
Vivid Images, Quick Response, and Longer Battery Life **Advanced LSI and CxProcess™ III Image Processing**

Advanced technologies combine to deliver clear, bright images with vivid color. A newly developed LSI reduces power consumption while providing the appearance of higher resolution and enhancing gradation. The CxProcess III algorithm improves color reproducibility, and a new Portrait sRGB color mode renders skin colors more beautifully in portraits.

Superb Image Rendering Across the Entire Zoom Range **7x Optical (28-200mm*) / F2.8 – 3.5 GT APO Lens**

The Konica Minolta all-glass GT APO lens system uses two molded-glass aspherical lenses and two AD glass lenses to minimize flare, chromatic aberration and image distortion. Combined with the 4x digital zoom, this high-quality system gives you a maximum 28x zoom capability.

* 35mm film camera equivalent



28mm



100mm



200mm

Digital
4x

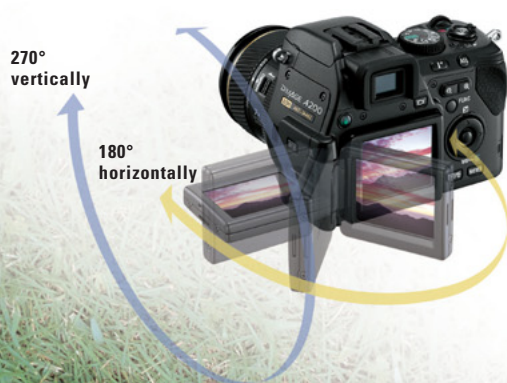


800mm



Shooting Data
 Shutter speed: 1/125 second
 F-stop: F8 (28mm*)
 Exposure mode: Aperture priority
 *35mm film camera equivalent

Easy Shooting, Beautiful Results, Long-Lasting Memories



Take High or Low Angle Shots and Self-Portraits with Ease **Vari-angle LCD Monitor**

The DiMAGE A200 makes it easy to take shots that are difficult with other cameras. The 1.8" Vari-angle LCD monitor rotates 270° vertically and 180° horizontally for easy shooting from high or low angles, and it combines with the wireless remote control to give you the easiest self-portraits yet. When you're using the electronic viewfinder, the Vari-angle LCD monitor tucks safely away to prevent damage. The Real Motion monitor shows images at a quick 60 fps (frames per second) for smooth viewing.



A standard-sized SLR camera



Smaller and Lighter than Many in Its Class – Easy to Carry, Easy to Use

Weighing just 505 grams/17.8 ounces* and designed to fit snugly in the hand, the DiMAGE A200 goes where you go and never weighs you down. With this handy camera, you're ready when a good photo opportunity arises.

* Without battery and recording media

Easy to Use – And Lots of Fun

High-Quality Movies with Anti-Shake and a 28x Zoom (max.)

Have fun exploring the DiMAGE A200's many movie recording features. Anti-Shake helps assure crisp, clear pictures and is especially helpful when you're using the digital zoom. The 4x digital and 7x optical zooms combine to provide a zooming range of 28-800mm*, with outstanding quality even at full telephoto. Choose smooth, television quality VGA resolution of 640 x 480 dots (30 frames per second) or large, 800 x 600 dot SVGA resolution (15 frames per second) for PC use.

* 35mm film camera equivalent

Wireless Remote Control Convenience

The wireless remote control* adds convenience to both shooting and viewing. Use it to take self-portraits (either snapshots or movies), control the digital zoom, turn monitor indications on or off, and set the playback mode when viewing images on a television.

*Provided standard except in Japan, where it is available as an option



Advanced Shooting Made Easy

Multiple Auto Focus Modes

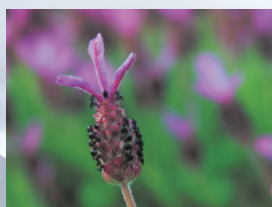
The DiMAGE A200 is equipped with an AF Area mode that has three settings (Wide, 11 Point Focus, and Flex Focus Point), an AF mode with two settings (Single-shot AF and Continuous AF), and Full-time AF. Simply choose the one that best suits your subject and shooting conditions.

Remarkable Close-ups of the World Around You

Take close-up shots of a small 4 x 5 cm (1.6 x 2.0 inch) object with outstanding detail and real-life beauty. Flexible macro imaging with two settings, Wide and Tele, lets you shoot as close to your subject as 21 cm (8.3 inches) in wide angle and 13 cm (5.1 inches) in telephoto. The working distance in telephoto gives you more freedom with shooting angles and lighting.



Wide Macro



Tele Macro

Easy-to-Access Control Buttons for Quick, Comfortable Operation

The buttons used most often are set on the back of the camera where you can access them easily without looking away from the Vari-angle LCD monitor. A shift button provides operation shortcuts, and a function menu on the Vari-angle LCD monitor makes it easy to select the color mode and adjust digital effects as well as other settings. The 4x digital zoom can be activated for any focal length of the 7x optical zoom.



This is a simulated image.



Quick, Precise Manual Zooming

We selected manual operation for the 7x optical zoom on the DiMAGE A200 to give you the exact magnification you want, quickly and easily. When composing a shot, manual zooming lets you switch between magnifications much faster than a power zoom, for greater control. The single DiMAGE A200 lens lets you zoom from 28mm* wide angle to 200mm* telephoto, and up to 800mm* super-telephoto with the 4x digital zoom.

* 35mm film camera equivalent

Flex Digital Magnifier (FDM) for Easier Manual Focusing

For greater precision when manually focusing or using the Direct Manual Focus function, you can enlarge and view any part of the subject. You can also change the enlarged part to any area you want by operating the controller button. FDM is linked to the focus ring operation, so the selected part is automatically enlarged and displayed as you turn the focus ring.



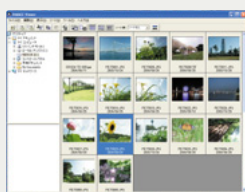
Other Notable Features

- Simultaneous recording of images in JPEG (Fine) and RAW formats
- Lossless JPEG mode for professional quality images (Extra fine)
- Selectable image sizes: 8M, 7M (3:2), 5M, 3M, 2M, VGA (640 x 480)
- Color modes: Natural, Vivid, Portrait, Adobe RGB (ICC), Black & White
- Menu indications in various languages: English, German, French, Spanish, Chinese (Simplified), Japanese, Italian and Swedish
- PC Interface: Full-speed (12 Mbps) data transfer with USB
- Digital Subject Program Selection: Portrait, Sports action, Sunset, Night portrait
- PictBridge compatible for direct camera-to-printer connection

Bundled Software Adds Even More Creativity and Fun

DiIMAGE Viewer

This software lets you check thumbnails of your images, plus Exif data and any comments you've added. Files can be easily copied, moved, and renamed. Diverse editing tools are provided, such as tone curve and histogram adjustment for still images and flicker compensation for movies. Advanced color management tools are included.



Ulead VideoStudio

VideoStudio lets you transfer movie clips to your PC and edit them together with ease. You can add filters and transition effects, titles, music, and narration. Once completed, save your movie in a Video CD or Web-ready format to share with family and friends.

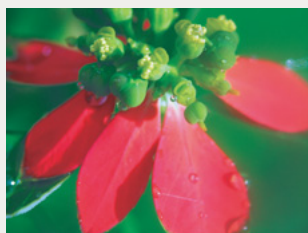
(VideoStudio is compatible with Windows only.)



Optional Accessories Conversion Lenses



Without



With



Close-up Lens CL49-200

With the CL49-200, you can shoot subjects as close as approximately 8 cm (3.2 inches) from the lens. It lets you fill the screen with subjects as small as 31 mm x 23 mm (1.2 x 0.9 inches) in size (35mm equivalent of approx. 1.12x).



Without



With



Wide-angle Converter ACW-100

Use the ACW-100 lens converter to reduce the focal length at the wide-angle position to 22mm* for more dynamic wide-angle photos.



Without



With

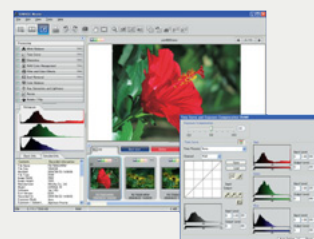


Telephoto Converter ACT-100

The ACT-100 lens converter lets you take superb telephoto shots by increasing the focal length at the telephoto position to 300mm*.

* 35mm film camera equivalent

DiIMAGE MASTER



This software uses a newly developed RAW converter engine to reproduce accurate colors. Diversified operations, such as viewing, classifying, correcting, printing and more, can be performed in the three main windows. The Organizer window, with an instant thumbnail display and the Focus Checker, supports speedy classification. The Examiner window enables visual and quantitative analysis in detail on multiple, side by side images. The Photofinisher window provides a sophisticated platform for image retouching with professional and user-friendly functions.

Compatible Computers

DiIMAGE Viewer

- IBM PC/AT compatible computers with preinstalled Windows XP, Windows Me, Windows 2000 Professional, Windows 98* or Windows 98 Second Edition* with a built-in USB port as standard interface.
- Apple Macintosh computers with Mac OS 9.0-9.2.2 or Mac OS X v.10.1.3-10.1.5, v.10.2.1-10.2.8 and v.10.3.0-10.3.5 with a built-in USB port as standard interface.

*Users of Windows 98 and Windows 98 SE must install dedicated driver software supplied with the product.

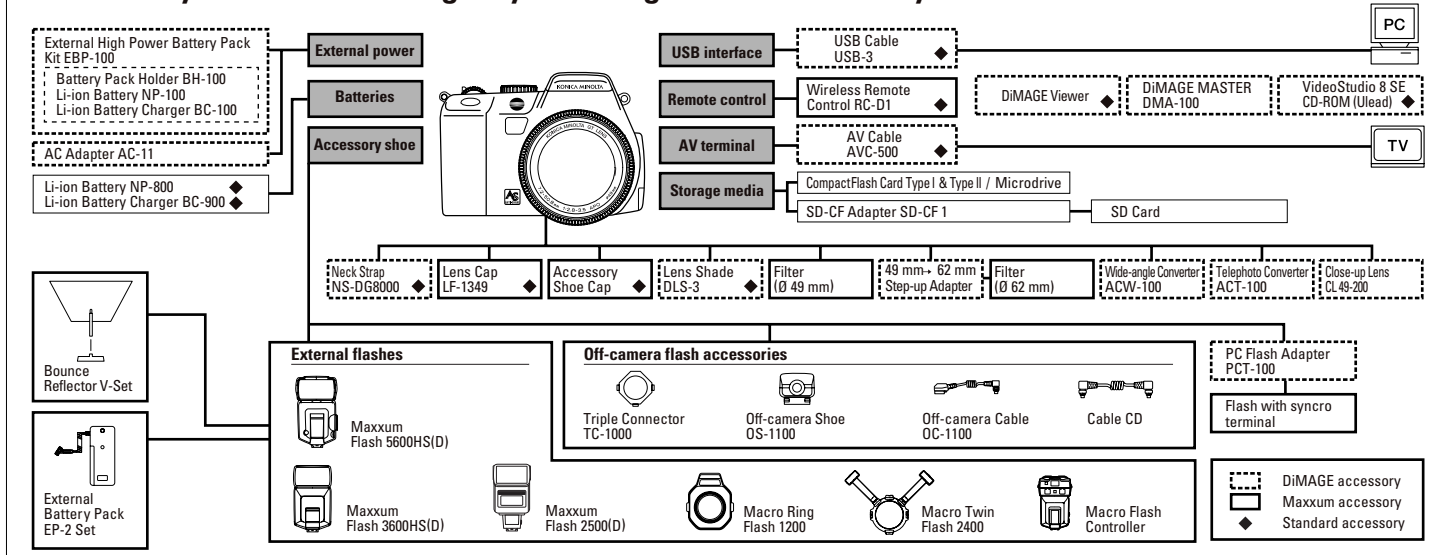
DiIMAGE MASTER

- IBM PC/AT compatible computers with preinstalled Windows XP Home / Professional or Windows 2000 Professional, with a built-in USB port as standard interface.
- Apple Macintosh computers with Mac OS X or later v10.1.3-10.1.5, 10.2.1-10.2.8, v10.3.0-10.3.5 with a built-in USB port as standard interface.

Notes

- Computers and operating systems must be guaranteed by their manufacturers to support the USB interface. For details, please contact the manufacturer.
- Problems may be encountered depending on what other USB devices are being used in parallel with this product.
- Only a built-in USB port is supported. Problems may be encountered when the camera is connected to a USB hub.
- Normal operation may not occur even if all the system requirements are met.

Extensive system accessories give you even greater functionality



SPECIFICATIONS

Number of effective pixels (approx.)	8.0 million
CCD	2/3 inch interlaced primary-color CCD Total pixels: Approx. 8.3 million
Camera sensitivity	Auto, ISO 50, 100, 200, 400, 800 equivalents
White balance control	Automatic, Preset (Daylight, Tungsten, Fluorescent, Cloudy, Shade, Flash), Custom (2 positions)
Shutter speed range	P/A mode : 30 seconds* - 1/3200 second S/M mode : 30 seconds* - 1/1600 second Bulb (max. 30 seconds*) *The slowest shutter speed depends on the camera sensitivity (ISO) setting
Anti-Shake	Available
Lens construction	16 elements in 13 groups
Focal length	7.2-50.8mm (equivalent to 28 - 200mm in 35mm format)
Max. aperture	f/2.8 - f/3.5
Filter diameter	49 mm
Focusing range (from front of lens)	Approx. 0.4 m (1.3 feet) to infinity Macro: Wide-angle: 21 cm - 51 cm (8.3 inches - 20.1 inches) Telephoto: 13 cm - 50 cm (5.1 inches - 19.7 inches) Manual zoom
Zooming method	Type I and Type II CompactFlashCards, Microdrives, SD (SecureDigital) memory cards and MultiMediaCards with the optional CompactFlash Adapter SD-CF1
Recording media	JPEG, RAW, Motion JPEG (MOV) with monaural audio, DCF 2.0-compliant, DPOF-compliant (supported by printing function in ver. 1.1), Exif 2.2
File formats	3264 x 2448, 3264 x 2176 (in 3:2 mode), 2560 x 1920, 2080 x 1560, 1600 x 1200, 640 x 480
Number of recorded pixels	Standard, Fine, Extra fine, RAW, RAW+JPEG
Image quality modes	Standard: 2.0MB, Fine: 3.9MB, Extra Fine: 6.1MB, RAW: 11.4MB, RAW+JPEG: 15.3MB
File size* (approx. at 3264 x 2448)	Standard: 62 frames, Fine: 31 frames, Extra Fine: 19 frames, RAW: 10 frames, RAW+JPEG: 9 frames
Storage capacity* (128MB) (approx. at 3264 x 2448)	Movie recording: (320 x 240, 15 fps): 5 minutes. 55 seconds *Numerical value may vary depending on the subject
Color modes	Natural Color (sRGB), Vivid Color (sRGB), Portrait (sRGB), Adobe RGB (ICC), B&W
Vari-angle LCD monitor	1.8 inch TFT color, rotating 270° vertically and 180° horizontally Total pixels: 134,000 (approx.)
Viewfinder type	TTL electronic viewfinder (EVF), 0.44 inch color-filter, full-color display, QVGA size
Eye-relief	Equivalent visual resolution: 235,000 pixels (approx.)
Diagonal view angle	22 mm (from protection glass at -1 diopter.)
Diopter control	28 degrees (approx.)
Playback functions	-5 to +2 diopter Single-frame playback, Index playback (9 frames), Enlarged playback 10x (Max.) (scrollable), Slide show, Movie playback, Histogram (Luminance Limit Display available) of recorded image
Other display functions	EVF/LCD-monitor changeable, Grid, Scale, Histogram of recorded image, Automatic monitor amplification, Electronic magnification
Languages	English, German, French, Spanish, Simplified Chinese, Japanese, Italian, and Swedish
Autofocus system	Video AF
Autofocus area	Wide focus area/11 point, selectable Spot focus point (Flex Focus Point control is available with the spot focus point, Metering area linked/not linked selectable)

Focus mode

Autofocus: Single-shot AF, Continuous AF, Full-time AF.
Manual focus: Flex Digital Magnifier (FDM) of 4x electronic magnification), Automatic magnification

Metering

Exposure compensation

Exposure mode

Exposure control range

Built-in flash range

Flash modes

Flash metering

Flash compensation

External flashes

Movie recording

Drive modes

Digital Subject Program Selection

Digital bracketing

Continuous advance

Digital zoom

Battery

External power source

Battery performance

AV output

PC interface

Printing output control

Dimensions (WxHxD)

Weight (approx.)

Operating temperature

Standard accessories

+/-2 EV in 1/3 increments
P (Programmed AE, with program shift), A (Aperture priority), S (Shutter priority), M (Manual).
P/A modes: Wide-angle; EV -1 - 18, Telephoto; EV 0.5 - 18
S/M modes: Wide-angle; EV -2.0 - 18, Telephoto; EV -1.5 - 18
Wide-angle: 0.5 - 3.8 m (1.6 feet - 12.5 feet) from CCD (approx.)
Telephoto: 0.5 - 3.0 m (1.6 feet - 9.8 feet) from CCD (approx.)
Fill-flash, Red-eye reduction, Rear flash sync
Automatic flash control, Manual flash control
Flash-sync speeds: All shutter speeds
+/-2 EV in 1/3 increments
Maxxum Flash 5600HS(D), 3600HS(D), 2500D
Macro Ring Flash 2400*, Macro Ring Flash 1200*
*Macro Flash Controller is necessary with accessory shoe or PC Flash Adapter
Modes: Standard movie / Night movie
Movie clips: 800 x 600, 640 x 480, 320 x 240
Frame rate: 15 fps, 30 fps (15 fps only at 800 x 600)
Max. recording time: 15 minutes
Single, Continuous, Self-timer (10 seconds, 2 seconds), Digital bracketing, High-speed continuous advance, UHS continuous, Remote control
Portrait, Sports action, Sunset, Night portrait
White balance
Approx. 2.0 fps
High-speed continuous advance: Approx. 2.3 fps
UHS continuous advance: Approx. 10 fps with 640 x 480
Interpolate mode: 4x (max.)
Normal mode: 2x
Interpolate mode and Normal mode selectable
One dedicated lithium-ion battery
6V DC (with specified AC adapter)
Number of recorded images (approx.): 260 frames*
*Compliant with CIPA (Camera & Imaging Products Association) standard
Continuous playback time (approx.): 330 minutes*
*Konica Minolta standard test method
NTSC/PAL (selectable on the camera)
USB: Full-speed 12 Mbps data transfer with a USB 2.0 compatible computer.
Exif Print 2.2.1, Print Image Matching III, PictBridge
114 x 80 x 115 mm/4.5 x 3.1 x 4.5 inches
505 g (17.8 ounces) without batteries and recording media
0 - 40°C
Wireless Remote Control RC-D1, Lithium-ion Battery NP-800, Lithium-ion Battery Charger BC-900, Neck Strap NS-DG8000, Lens Cap (49 mm) LF-1349, Lens Shade DLS-3, Accessory Shoe Cap, AV Cable AVC-500, USB Cable USB-3, DiMAGE Viewer CD-ROM, Ulead VideoStudio 8 SE CD-ROM for Windows

Compatible OS: Windows XP (Professional/Home Edition), Windows Me, Windows 2000 Professional, Windows98*, Windows 98 SE*, Mac OS 9.0 - 9.2.2, Mac OS X v10.1.3 - 10.1.5, 10.2.1 - 10.2.8, 10.3 - 10.3.5

* Users with Windows 98 and Windows 98 Second Edition operating systems must install dedicated USB driver software included in the DiMAGE A200 package.

Specifications and accessories are based on the information available at the time of printing and are subject to change without notice. For the latest information, please visit: <http://konicaminolta.com/dimage>

• The LCD monitor is manufactured using high-precision technology. The appearance of any missing pixels or lit pixels does not indicate damage to the monitor.

- The Konica Minolta logo and "The essentials of imaging" are trademarks or registered trademarks of Konica Minolta Holdings, Inc.
- DiMAGE, CxProcess and Maxxum / Dynax are trademarks or registered trademarks of Konica Minolta Photo Imaging, Inc.
- Windows is a registered trademark of Microsoft Corporation in the United States and other countries.
- Mac is a trademark of Apple Computer, Inc., registered in the U.S. and other countries.
- All other brand and product names are trademarks or registered trademarks of their respective owners.

Images (except for product photos) are simulated for design purposes.



Konica Minolta Inkjet Photo Paper
True Quality From Any Inkjet Printer
Perfect For All Digital Images Captured
With Konica Minolta Digital Cameras

Konica Minolta Photo Imaging, Inc.

Shinjuku Nomura Bldg., 1-26-2 Nishishinjuku, Shinjuku-ku, Tokyo 163-0512, Japan

This brochure is printed with soy ink for environmental preservation.

©2004 Konica Minolta Photo Imaging, Inc. 9242-4956-06 0409 (MC)-A1 Printed in Japan