



KONICA MINOLTA

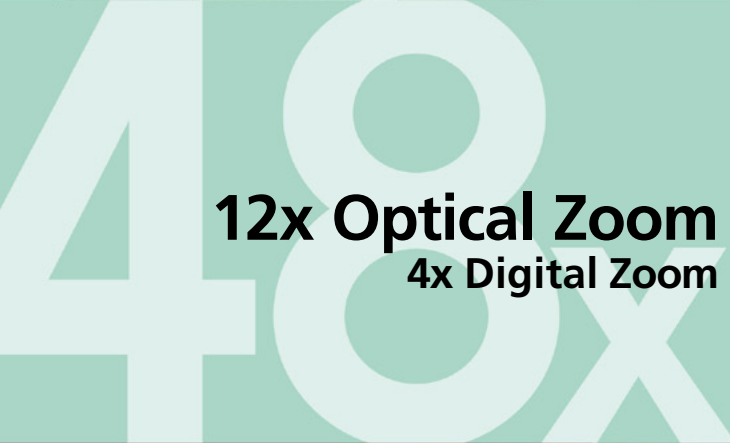
DiMAGE Z5



5.0
Megapixels

12x
Optical Zoom

**Mega Zoom Power with
Anti-Shake Protection
for Superb Image Quality**



**12x Optical Zoom
4x Digital Zoom**



**5.0
Megapixels**



**2.0
inch LCD**





Mega
ZOOM



48x
total zoom
12x optical zoom
4x digital zoom

Pull Distant Subjects in Close with Blur-Free Sharpness and Clarity



Anti-Shake at any zoom setting

DiMAGE Z5's Anti-Shake system virtually eliminates blurring caused by camera shake. Featuring an exclusive Konica Minolta mechanism that acts directly on the CCD, it offers outstanding speed, precision, and image quality without the compromises that must be made with conventional optical and digital correction systems.

12x optical zoom for dramatic close-ups of distant subjects

Get close to the action — even from a distance — with the DiMAGE Z5's 12x optical zoom. Boasting a focal length equivalent to 35mm – 420mm on a 35mm film camera, it allows you to fill the frame with beautifully detailed images of faraway subjects. You can also combine it with 4x digital zoom to achieve a maximum of up to 48x zoom.

CxProcess™ III technology for rich, natural color

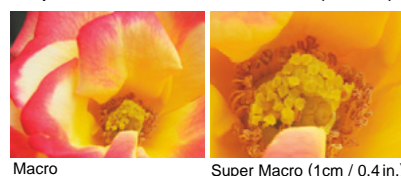
Proprietary Konica Minolta CxProcess III image processing technology optimizes color and contrast to ensure that colors are rendered just as the human eye perceives them.



5.0-megapixel resolution for big, beautiful photo prints

The high-resolution, 5.0-megapixel CCD captures such fine image detail that even 163mm x 217mm / 6.4 in. x 8.5 in. (300 dpi) photo prints look great. What's more, CCD performance is further enhanced by the lens' GT APO (apochromatic) optics and AD (Anomalous Dispersion) elements for edge-to-edge sharpness and superior color.

Super Macro mode lets you create stunning close-ups from a distance of 1 cm (0.4 in.).



Rapid

5.0 Megapixels

AF
AUTO FOCUS

Capture Each Magic Moment with Confidence, Speed and Precision



2-inch LCD monitor

A big new 2-inch LCD monitor makes it easier to compose and view images, and increases the legibility of on-screen menus and function settings.

Fast, precise autofocus, plus advanced Predictive Focus Control

The DiMAGE Z5's high-precision Rapid AF (Auto Focus) offers outstanding focusing accuracy and class-leading speed* for quick, responsive shooting. In addition, advanced Predictive Focus Control improves focusing accuracy when shooting fast-moving subjects.

*Among 5.0-megapixel class digital still cameras with built-in optical zoom of 10x or more, as of Nov. 15, 2004.

Versatile flash shooting

In addition to being equipped with a built-in popup flash, the DiMAGE Z5 lets you take advantage of the enhanced power and versatility of optional Program Flash 5600HS(D) / 3600HS(D) / 2500(D) external flash units.

Fast, stress-free operation

A startup time of 1.9 seconds, a shutter-release lag time of 0.06 seconds, and a frame-to-frame shooting interval of 1 second ensure fast, responsive operation for stress-free shooting*.

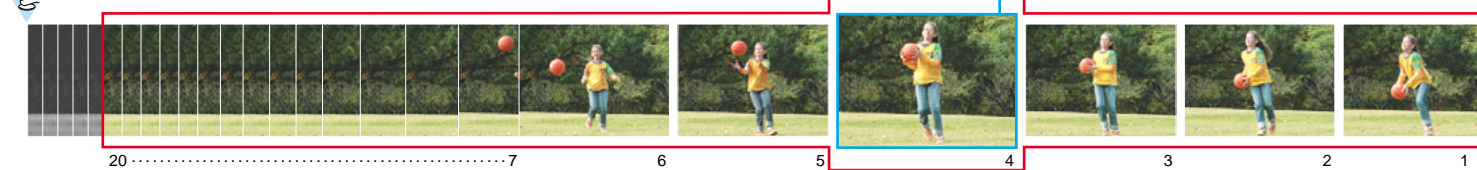
*All times approximate; shooting interval does not include autofocus time.

Your chances of capturing the magic moment soar, because all of the frames outlined in red are saved.

Progressive Capture mode

In Progressive Capture mode, 10 frames per second are captured and sent to the camera's buffer memory for as long as the shutter button is held down. Then, when you let go of the shutter button, 20 of the most recently captured frames are saved to the camera's memory card as 1024 x 768 images.

Press and hold the shutter-release button



High-quality VGA movie recording

The DiMAGE Z5 lets you record 640 x 480 VGA movies at a frame rate of 30 fps, ensuring high image quality and smooth playback that looks great even when displayed on a standard TV or video monitor. In addition, a new editing function lets you delete unwanted segments right in the camera.

*On rare occasions, a memory card may not record to full capacity due to its writing speed.

More Exciting Features

- Improved electronic viewfinder for easier framing and shooting
- Automatic Digital Subject Program Selection optimizes various settings to match the scene
- Noise reduction for clearer, less-grainy images in low light
- Automatic monitor brightness adjustment for easier viewing
- Real-time histogram for easy confirmation of exposure levels in each area of the frame

- Choice of color modes for greater creative flexibility
- Choice of multi-segment, center-weighted, and spot metering for greater exposure control
- Accepts widely available AA alkaline batteries or long-lasting Ni-MH batteries
- PictBridge compatibility for direct printing without a PC



Optional Accessories

External Flash Units



Program Flash 2500(D)



Program Flash 3600HS(D)



Camera Case CS-DG1000

The Program Flash 5600HS(D) is also available.

Wide-Angle Converter Lens

A convenient converter with a wide-angle field of view (equivalent to 26mm) that's ideal for landscape photography and indoor shooting when space is tight.



Wide-angle Converter ZCW-300 KIT



35 mm without converter



26 mm with ZCW-300 kit

Availability of accessories depends on area.

Other Features at a Glance

- DiMAGE Viewer software for easy image editing and file management
- Versatile P/A/S/M exposure mode control
- Manual focusing capability
- Auto white balance control, plus 5 presets and 1 custom setting
- Customizable flash mode button
- In-camera image rotation
- Auto exposure bracketing
- E-Mail Copy mode for creating e-mail attachments
- 6-frame index display and enlarged image display in PictBridge print settings menu
- Choice of 8 languages for menu display

SPECIFICATIONS

Number of effective pixels	Approx. 5.0 million
CCD	1/2.5-type interline primary-color CCD with a total of approx. 5.2 million pixels
Anti-Shake	CCD-shift mechanism
Camera sensitivity	Auto and ISO 50 / 100 / 200 / 320 equivalents
Lens	5.83 – 69.9 mm (35 mm equivalent: 35 – 420 mm), f/2.8 – f/4.5, 13 elements in 10 groups
Recording media	SD (Secure Digital) Memory Card / MultiMediaCard
File format	JPEG, Motion JPEG (MOV) with Audio, DCF2.0 compliant, DPOF (ver. 1.1), Exif 2.2
No. of recorded pixels	2560 x 1920, 2048 x 1536, 1600 x 1200, 640 x 480
Image file size	Economy: 750 KB, Standard: 1360 KB, Fine: 2590 KB
(approx.: at 2560 x 1920)	Movie (15 fps, 640 x 480, STD): 500 KB/s
Storage capacity	Economy: 18, standard: 9, Fine: 4
(approx. no. of frames at 2560 x 1920 with 16 MB SD Card)	Movie recording (15 fps, 640 x 480, STD): approx. 28 s
	* The actual number of images may vary depending upon the subject and media used.
Autofocus system	Video AF system
Autofocus area	5-point wide focus area: Wide focus area / Spot focus area with Focus Area Selection
Focus modes	Autofocus: Single-shot AF, Continuous AF (with predictive focus control), Full-time AF, Manual focus. Focus lock available in Single-shot AF
Focusing range	Wide / Tele: 0.6 m (2.0 ft.) / 1.6 m (5.2 ft.) to infinity
(from front of the lens)	Macro: Wide: 0.1 m (0.3 ft.) – 1.0 m (3.3 ft.) / Tele: 1.2 m (3.9 ft.) – 2.5 m (8.2 ft.)
	Super Macro: 1 cm (0.4 in.) – 100 cm (39.4 in.)
White-balance control	Automatic, Preset (Daylight, Tungsten, Fluorescent, Cloudy, Flash), Custom
Metering	Multi-segment (256 segments), Spot, Center-weighted
Shutter speed	4 s – 1 / 1000 s
Exposure mode	Programmed AE, Aperture priority, Shutter priority, Manual. AE lock available
Digital Subject Program Selection	Portrait, Sports action, Landscape, Sunset, Night portrait
Exposure compensation	± 2 Ev with 1/3 Ev step
Exposure bracketing	0.5 / 0.3 Ev increments; No. of bracket: 3 frames
Flash mode	Autoflash & Autoflash with red-eye reduction, Fill-flash, Slow shutter sync. (in Auto / P / DSPS mode), Fill-flash, Fill-flash with red-eye reduction, Slow shutter sync. (in A/S/M mode), Flash cancel possible by pushing the built-in flash unit downward. (ISO 100 equivalent) 8 (m) / 26.2 (ft.)
Flash GN	Program Flash 5600HS(D) / 3600HS(D) / 2500(D)
External flash units connectable	Electronic viewfinder
Finder	-3 – +1 m ⁻¹
Diopter	2.0 in. digital-interface TFT color, with total 114,000 (approx.) pixels
LCD monitor	Approx. 10 s / 2 s delay
Self-timer	Vivid, Natural, Monochrome, Sepia
Color mode	No. of recorded pixels: 640 x 480 FINE, 640 x 480 STD, 320 x 240 STD
Movie recording	Frame rate: 30 fps / 15 fps, Long recording until the memory card is full
Sharpness / Contrast control	Adjustable in 3 levels
Noise reduction	Automatic
Printing output control	Exif Print, PRINT Image Matching III, PictBridge
Interface	USB: Full-Speed 12Mbps data transfer with a USB2.0 compatible computer, Video output NTSC / PAL (selected on the camera)
Battery	Four AA Ni-MH batteries, AA alkaline batteries
External power source	6V DC (with specified AC adapter)
Dimensions (WxHxD)	Approx. 108.5 mm x 80 mm x 84 mm / 4.3 in. x 3.1 in. x 3.4 in.
Weight	Approx. 340 g / 12 oz. (without batteries or recording media)

Standard Accessories

Battery (four AA Alkaline batteries), Neck Strap (NS-DG7000), AV Cable (AVC-700), USB Cable (USB-2), DiMAGE Viewer CD-ROM, SD Memory Card (16MB), Lens Cap (LF-243), Shoe Cap (SC-1000)

Optional Accessories

Camera Case (CS-DG1000), Wide-angle Converter ZCW-300 KIT, Leather Neck Strap (NS-DG1000) AC Adapter (AC-11), Flashes; Program Flash 5600HS(D) / 3600HS(D) / 2500(D)

• Availability of accessories depends on area.

Specifications and accessories are based on the information available at the time of printing, and are subject to change without notice. For the latest information, please visit: <http://konicaminolta.com/dimage>

Compatible Computers

- IBM PC / AT compatible computers with preinstalled Windows Me, Windows 2000 Professional, Windows XP (Home / Professional), Windows 98*, or Windows 98 Second Edition* and with a built-in USB port as standard interface. * Users with Windows 98 and Windows 98 Second Edition operating systems must install dedicated driver software included in the DiMAGE Viewer CD-ROM.
- Apple computers with Mac OS 9.0–9.2.2, Mac OS X v.10.1.3–10.1.5, v.10.2.1–10.2.8, v.10.3–10.3.6, and with a built-in USB port as standard interface.

Notes:

- Computers and operating systems must be guaranteed by their manufacturers to support USB interface. For details, please contact the manufacturer.
- Problems may be encountered depending on what other USB devices are being used in parallel with this product.
- Only a built-in USB port is supported. Problems may be encountered when the camera is connected to a USB hub.
- Normal operation may not occur even if all the system requirements are met.
- The LCD monitor is manufactured using high-precision technology. The appearance of any missing pixels or lit pixels does not indicate damage to the monitor.
- Images (except for product photos) are simulated for design purposes.

Great Shots, Great Prints

Konica Minolta Inkjet Paper

Bringing you perfect photo-quality prints for all digital images captured with Konica Minolta digital cameras
* Package design may not look the same for all regions.



- The Konica Minolta logo and "The essentials of imaging" are trademarks or registered trademarks of Konica Minolta Holdings, Inc.
- DiMAGE and CxProcess are trademarks or registered trademarks of Konica Minolta Photo Imaging, Inc.
- Windows is a registered trademark of Microsoft Corporation in the United States and other countries.
- Macintosh and Mac are trademarks of Apple Computer, Inc., registered in the U.S. and other countries.
- All other brand and product names are trademarks or registered trademarks of their respective owners.

Konica Minolta Photo Imaging, Inc. Shinjuku Nomura Bldg., 1-26-2 Nishishinjuku, Shinjuku-ku, Tokyo, 163-0512 Japan

This brochure is printed with soy ink to help preserve the environment.