

you can  
**Canon**

DIGITAL  
**IXUS**  
THE COLLECTION





## The power of desire.

Sleek, distinctive design. Powerful, cutting-edge technology. The incomparable Canon Digital IXUS range captures the imagination as beautifully as it captures the world around it. These stylish cameras embody Canon's uncompromising commitment to photographic excellence with their stunning range of capabilities and high-performance lenses. The Digital IXUS range - feel the power of desire.

# Look deeper.

As any photographer knows, beauty comes from within. And, despite their stunning exteriors, the real attraction of the Digital IXUS range comes from their cutting-edge technology and Canon original lenses.

## MEGAPIXELS

These cameras are superbly equipped to capture your imagination. Their CCD sensors range from 4.0 Megapixels – for prints up to A4 – all the way to 7.1 Megapixels – for prints up to A3+. You're never short of power with the Digital IXUS range.



## HIGH-PERFORMANCE CANON LENSES

With over sixty years of experience in optical engineering, Canon is universally recognized as one of the leaders in lens technology. Every Digital IXUS features a high-performance Canon lens designed to capture a scene with pin-sharp clarity and realistic, vibrant colours. The Digital IXUS 50 and Digital IXUS 40 also incorporate Canon's UA (ultra-high refractive index aspherical) lens. This allows the cameras to have a sleek, super-compact profile while maintaining Canon's high standard of image quality.



## DIGIC PROCESSOR

**DIGIC II** **DIGIC** Canon's unique DIGIC (DIGital Imaging Core) technology is the final component in the digital imaging process. This dedicated image processor links all the primary camera functions, ensuring they operate as quickly and efficiently as possible. The super-fast processing speeds result in brilliant image detail, clarity and colour reproduction – as well as quick camera controls, fast, accurate auto focus (AF) performance and extended continuous shooting ability. DIGIC II – featured in the Digital IXUS 700, Digital IXUS 50 and Digital IXUS 40 – is Canon's next generation processor, and delivers even faster camera performance with enhanced image processing and longer, higher quality movies. By operating so efficiently, both the DIGIC and DIGIC II processors allow for extended battery life, so you can shoot for longer on a single battery charge. With DIGIC in charge, you can rely on Canon.

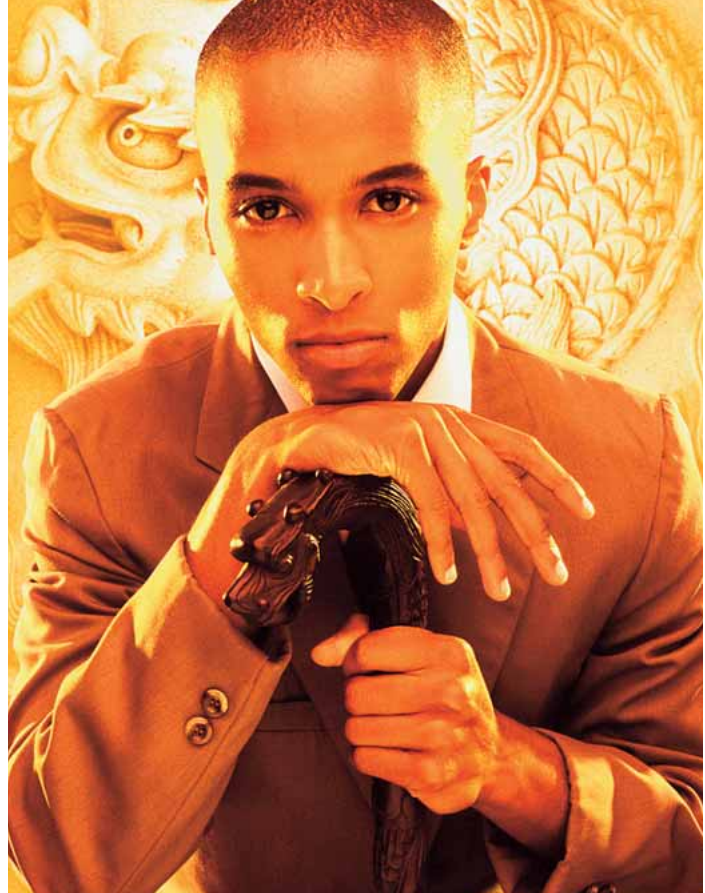


# Beauty and brains.

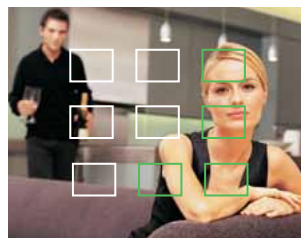
You get both with the Digital IXUS range – the perfect combination of leading edge technology and cutting edge design.

## ISAPS – INTELLIGENT SCENE ANALYSIS BASED ON PHOTOGRAPHIC SPACE

**iSAPS** Every time you take a picture with a Canon Digital IXUS camera, iSAPS is part of the process. The image is first analysed and cross-referenced against Photographic Space – a vast in-camera library of photographic information about the way people take pictures. As soon as you press the shutter the camera analyses your scene using Photographic Space data. It then optimally controls the Auto Exposure, Auto Focus and Auto White Balance.



## AiAF



9-point AiAF

## 9-POINT AiAF

The Digital IXUS range features Canon's 9-Point Artificial Intelligent Auto Focus (AiAF) system to ensure perfectly focused images even when your subject is not in the centre of the frame. It automatically detects the closest object from nine fixed focusing areas in order to ensure a clear, sharp image with optimum exposure.

# Inspiring technology.

Challenge yourself creatively with a wide range of shooting modes and in-camera features that combine state-of-the-art technology with Canon's expert knowledge of practical photography.



## AUTO

All you have to do is point and shoot with this mode – focus, exposure, white balance – it does everything for you so you can enjoy the moment as well as capture it.



## MOVIE MODE

Shoot high quality VGA movies with sound, using any of the Digital IXUS cameras. Either use the camera's LCD screen to play and edit your high-resolution movies, or do it all on your computer with the supplied software. Just don't keep the fun to yourself – you can also connect the camera to your TV or send out movie clips via email.



## STITCH ASSIST

Stretch your creative impulses with Canon's Stitch Assist mode. It allows you to create stunning panoramas from multiple shots, seamlessly joining them together with the supplied software to make a single wide-format composition.

## **M** MANUAL

Let your inner artist out with the Manual mode. You set the parameters so you have more control over the shot.



# Stunning shots made simple.

As compact as they are, each Digital IXUS still comes with an incredible amount of automatic Scene Modes<sup>1</sup> to ease your shooting experience.



Beach















Indoor



Fireworks



Late night cityscapes?  
Indoor scenes? Beach parties? Get the most from every shot with a variety of Scene Modes. These are specially set up to automatically deliver the best results in potentially tricky shooting situations.

-  PORTRAIT
-  LANDSCAPE
-  NIGHT SNAPSHOT
-  INDOOR
-  UNDERWATER
-  MACRO
-  DIGITAL MACRO
-  FIREWORKS
-  KIDS & PETS
-  FOLIAGE
-  BEACH
-  SNOW

<sup>1</sup> Scene modes vary on selected models.



Color Swap



Color Accent

## My Colors.

Canon's new 'My Colors'<sup>1</sup> feature allows you to alter the colours of your image, or movie, on the camera.



Simply select one of the 9 sub-modes before taking your shot: choose from Vivid Red, Vivid Blue, Vivid Green, Positive Film, Lighter Skin Tone, Darker Skin Tone, Color Accent, Color Swap or Custom Color. You can then decide whether you wish to keep both the original image and edited image or just the edited image (if you use My Colors while recording a movie only the edited movie will be saved).

They're your shots - now they're your colours too!

<sup>1</sup> Available for Digital IXUS 700 and Digital IXUS 50 only

# The ultimate IXUS

An uncompromised blend of quality and designer chic, the new Digital IXUS 700 epitomises Canon's commitment to excellence. Brimming with spearhead technologies, this all-metal bodied 7.1 Megapixel flagship of the IXUS range is as beautiful as it is powerful.



DIGITAL  
IXUS 700



- Stylish Perpetual Curve design
- 7.1 Megapixel CCD for photo quality prints up to A3+
- 3x optical zoom (approx. 12x combined)
- Extra large, high definition 2.0" Quick-bright LCD screen
- Night Display for easy night shooting
- Long VGA quality movie clips at 30 fps with sound recording and playback<sup>1</sup>
- Commanding performance and superb results with DIGIC II and iSAPS
- 9-point AiAF brings even off-centre subjects sharply in focus
- Hi-Speed USB 2.0 for faster uploads and prints
- 14 shooting modes including 9 scene modes for impressive results in diverse conditions
- In-camera colour editing with My Colors
- Easy direct print and uploading with Print/Share button and PictBridge compatibility
- CANON iMAGE GATEWAY<sup>2</sup>: 100MB free online photo sharing

<sup>1</sup> Depending on memory card speed and capacity

<sup>2</sup> Not available in all regions



DIGITAL  
IXUS 50

## The power to seduce.

Exquisite design, exceptional technology – the new Digital IXUS 50 gives you everything in the palm of your hand. With 5.0 Megapixels and Canon's UA (ultra-high refractive index aspherical) 3x optical zoom lens amongst the many cutting-edge technologies incorporated into the impossibly slim all-metal casing, your creativity is now more portable than ever.

- Impeccably styled, delightfully slender
- 5.0 Megapixel CCD for photo quality prints up to A3
- Ultra slim body with 3x optical zoom due to UA lens (approx. 12x combined)
- Extra large, high definition 2.0" Quick-bright LCD screen
- Night Display for easy night shooting
- Long VGA quality movie clips at 30 fps with sound recording and playback<sup>1</sup>
- Commanding performance and superb results with DIGIC II and iSAPS
- 9-point AiAF brings even off-centre subjects sharply in focus
- Hi-Speed USB 2.0 for faster uploads and prints
- 10 shooting modes including 6 scene modes for impressive results in diverse conditions
- In-camera colour editing with My Colors
- Easy direct print and uploading with Print/Share button and PictBridge compatibility
- CANON IMAGE GATEWAY<sup>2</sup>: 100MB free online photo sharing

<sup>1</sup> Depending on memory card speed and capacity

<sup>2</sup> Not available in all regions



Actual size



# Power with style.

This pocket-sized wonder is simply too stunning to keep in your pocket. The Digital IXUS 40 has a sleek exterior that only hints at the remarkable technology within: 4.0 Megapixels, Canon's UA (ultra-high refractive index aspherical) 3x optical zoom lens, long 30 fps VGA movie capability (60 fps QVGA), and a whole host of shooting modes you'd only expect to find in a camera twice its size.



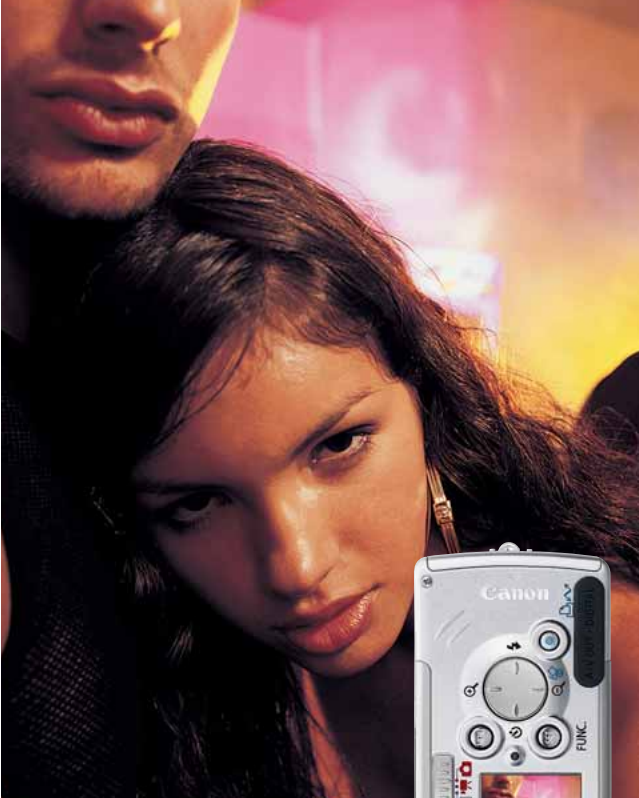
DIGITAL  
IXUS 40



- Exquisitely styled, delightfully slender
- 4.0 Megapixel CCD sensor for detailed prints up to A3 size
- Ultra slim body with 3x optical zoom due to UA lens (approx. 11x combined)
- Extra large, high-definition 2.0" LCD screen
- Long VGA quality movie clips at 30 fps with sound recording and playback<sup>1</sup>
- Commanding performance and superb results with DIGIC II and iSAPS
- 9-point AiAF brings even off-centre subjects sharply in focus
- Quick and easy shooting even in tricky conditions with 10 shooting modes (including 6 scene modes)
- Easy Direct Print and Windows PC uploading with Print/Share button and PictBridge compatibility
- CANON IMAGE GATEWAY<sup>2</sup>: 100MB free online photo sharing

<sup>1</sup> Depending on memory card speed and capacity.

<sup>2</sup> Not available in all regions.



## A triumph of design and technology.

The Digital IXUS *i*<sup>5</sup> may be Canon's smallest digital camera but it's impossible to miss. Its ultra slim body comes in four designer colours<sup>1</sup> – each one beautifully disguises the cutting-edge technology within. With its powerful 5.0 Megapixel CCD sensor, VGA movie capability and high performance Canon optics, image really is everything for the seductively sophisticated Digital IXUS *i*<sup>5</sup>.

- Ultra sleek, ultra stylish, all-metal Digital IXUS body in 4 irresistible colours<sup>1</sup>
- 5.0 Megapixel CCD sensor for photo quality prints up to A3 size
- VGA quality movie clips with sound recording and playback
- 3 cm Macro mode to get really close to your subject
- 9-point AiAF brings even off-centre subjects sharply in focus
- Fast, superb results from DIGIC processor and iSAPS
- Easy Direct Print and Windows PC uploading with Print/Share button and PictBridge compatibility
- Quick and easy shooting even in tricky conditions with 10 shooting modes (including 5 scene modes)
- CANON IMAGE GATEWAY<sup>2</sup>: 100MB free online photo sharing

<sup>1</sup> Some colour variations may not be available in some regions.

<sup>2</sup> Not available in all regions.

DIGITAL  
IXUS *i*<sup>5</sup>



Actual size (blue model)


# Get creative.

With Canon's free image management software you can browse, transfer, archive, edit, retouch and email all of your images and movies with ease. Make slideshows or create personal albums with sound effects, music or commentaries. Or play director with the Movie Edit Task, editing your footage and adding effects, sound and music.



With ZoomBrowser EX (for Windows) and ImageBrowser (for Mac), you'll discover just how simple it is to manage, archive and retouch your favourite photos.



 The Digital IXUS 700 and Digital IXUS 50 have Hi-Speed USB 2.0 capability for even faster uploading and printing of your images.



PhotoRecord lets you create and print digital photo albums, with text, backgrounds, picture frames and more, all with easy step-by-step selections.

## CANON IMAGE GATEWAY

The CANON iMAGE GATEWAY<sup>1</sup> gives you 100MB of free online space for storing your images and movies<sup>2</sup> - perfect for sharing them all with friends and family. It's easy, it's fun, and best of all, it's free.

1. Not available in all regions.
2. Upload of movie clips requires a download and installation of the Movie upload task module from the CANON iMAGE GATEWAY.

CANON  
**iMAGE**  
GATEWAY

# Get printing.

Every Digital IXUS is PictBridge compliant, meaning you can print directly to any compatible printer and have a full colour photo in your hand moments after taking the shot. All Canon SELPHY Compact Photo (CP) Printers and many of Canon's Pixma Printers are supported - including the SELPHY CP600, which due to its battery pack allows you to print wherever you are. The cameras' Photo ID and Movie Print features are also available when printing to a Canon SELPHY CP Printer.



## HERE'S HOW IT WORKS



**1 CONNECT**  
your camera directly to the printer.



**2 SELECT**  
the image you want - crop or trim for maximum effect.



**3 PRINT**  
your pictures in a variety of sizes.



Print/Share button

When the Print/Share button on your Digital IXUS camera illuminates you know it is ready for printing or transferring. Pressing the button will print the selected image.

# Discover a beautiful new world.

Taking your Digital IXUS underwater gives you the opportunity for some fantastic shots you could never get on dry land. Canon's specially engineered Waterproof Cases (waterproof to 40m) protect the camera underwater, while the All Weather Cases (waterproof to 3m) let you hit the beach or ski slopes without worrying about sand or water damage.



From left to right: Soft Leather Case DCC-30 for Digital IXUS *i*<sup>s</sup>,  
Body Glove Case DCC-BG30 for Digital IXUS 40/50  
Foreground: Soft Leather Case DCC-70 for Digital IXUS 700,  
Soft Leather Case DCC-60 for Digital IXUS 40/50



From left to right: All Weather Case AW-DC10 for Digital IXUS *i*<sup>s</sup>,  
Waterproof Case WP-DC70 for Digital IXUS 700,  
All Weather Case AW-DC30 for Digital IXUS 40/50

## Go out in style.

Covering up your gorgeous new Digital IXUS may seem irrational, until you take a look at the designer soft cases available. A stunning metal neck strap, beautifully stitched pure leather cases and the sporty Body Glove are designed to protect the camera from dirt and scratches keeping it as stunning as the day you bought it - not so ridiculous after all.

Specifications

DIGITAL  
IXUS 700



DIGITAL  
IXUS 50



DIGITAL  
IXUS 40



DIGITAL  
IXUS i<sup>5</sup>



<b>IMAGE SENSOR</b> Type Effective Pixels Colour Filter Type	1/1.8" CCD Approx. 7.1M Primary Colour	1/2.5" CCD Approx. 5.0M Primary Colour	1/2.5" CCD Approx. 4.0M Primay Colour	1/2.5" CCD Approx. 5.0M Primay Colour
<b>IMAGE PROCESSOR</b> Type	DIGIC II with iSAPS technology	DIGIC II with iSAPS technology	DIGIC II with iSAPS technology	DIGIC with iSAPS technology
<b>LENS</b> Focal Length Zoom Maximum f/number Construction	7.7 - 23.1mm (35mm film equivalent: 37 - 111mm) Optical 3x, digital approx. 4.0x, combined approx. 12x f/2.8 - f/4.9 7 elements in 5 groups (2 aspherical elements)	5.8 - 17.4mm (35mm film equivalent: 35 - 105mm) Optical 3x, digital approx. 4.0x, combined approx. 12x f/2.8 - f/4.9 6 elements in 5 groups (2 UA elements)	5.8 - 17.4mm (35mm film equivalent: 35 - 105mm) Optical 3x, digital approx. 3.6x, combined approx. 11x f/2.8 - f/4.9 6 elements in 5 groups (2 UA elements)	6.4mm (35mm film equivalent: 39mm) Digital approx. 6.5x  f/2.8 4 elements in 4 groups (1 aspherical element)
<b>FOCUSING</b> Type AF System/Points AF Lock  AF Assist Beam Closest Focusing Distance	TTL 9-point AiAF, 1-point AF (Fixed centre) On/Off Selectable  YES 5cm	TTL 9-point AiAF, 1-point AF (Fixed centre) On/Off Selectable  YES 3cm	TTL 9-point AiAF, 1-point AF (Fixed centre) On/Off selectable  YES 3cm	TTL 9-point AiAF, 1-point AF (Fixed centre) Locked when shutter button is pressed half way YES 3cm
<b>EXPOSURE CONTROL</b> Metering Modes  AE Lock  Exposure Compensation ISO Speed Equivalent	Evaluative, Centre-weighted average, Spot (centre) On/Off Selectable  On/Off Selectable  +/- 2 EV in 1/3 stop increments AUTO, 50, 100, 200, 400	Evaluative, Centre-weighted average, Spot (centre) On/Off Selectable  On/Off Selectable  +/- 2 EV in 1/3 stop increments AUTO, 50, 100, 200, 400	Evaluative, Centre-weighted average, Spot (centre) On/Off selectable  On/Off selectable  +/- 2 EV in 1/3 stop increments AUTO, 50, 100, 200, 400	Evaluative, Centre-weighted average, Spot (centre) Locked when shutter button is pressed half way +/- 2 EV in 1/3 stop increments AUTO, 50, 100, 200, 400
<b>SHUTTER</b> Speed	15 - 1/2,000 sec (Slow Shutter speeds of 1 sec and more, available in Long Shutter Mode only. Shutter speeds of 1.3 sec and more operate with noise reduction).	15 - 1/1,500 sec (Slow Shutter speeds of 1 sec and more, available in Long Shutter Mode only. Shutter speeds of 1.3 sec and more operate with noise reduction).	15 - 1/1,500 sec (Slow Shutter speeds of 1 sec and more, available in Long Shutter Mode only. Shutter speeds of 1.3 sec and more operate with noise reduction.)	15 - 1/1,500 sec (Slow Shutter speeds of 1 sec and more, available in Long Shutter Mode only. Shutter speeds of 1.3 sec and more operate with noise reduction.)
<b>WHITE BALANCE</b> Type Settings	TTL Auto, Daylight, Cloudy, Tungsten, Fluorescent, Fluorescent H, Custom	TTL Auto, Daylight, Cloudy, Tungsten, Fluorescent, Fluorescent H, Custom	TTL Auto, Daylight, Cloudy, Tungsten, Fluorescent, Fluorescent H, Custom	TTL Auto, Daylight, Cloudy, Tungsten, Fluorescent, Fluorescent H, Custom
<b>VIEWFINDER</b> Viewfinder	Real-image zoom, optical viewfinder	Real-image zoom, optical viewfinder	Real-image zoom, optical viewfinder	-
<b>LCD MONITOR</b> Monitor Coverage Brightness	2.0" P-Si TFT, approx. 118,000 pixels 100% Adjustable to one of fifteen levels	2.0" P-Si TFT, approx. 118,000 pixels 100% Adjustable to one of fifteen levels	2.0" P-Si TFT, approx. 118,000 pixels 100% Adjustable to one of fifteen levels	1.5" P-Si TFT, approx. 78,000 pixels 100% Adjustable to one of fifteen levels
<b>FLASH</b> Modes Slow Sync Speed Red-eye Reduction Flash Exposure Lock Built-in Flash Range  External Flash	Auto, Manual Flash On/Off YES YES YES 50cm - 5.0m (W)/3.0m (T) (at ISO AUTO equivalent) Canon's High Power Flash	Auto, Manual Flash On/Off YES YES YES 50cm - 3.5m (W)/2.0m (T) (at ISO AUTO equivalent) Canon's High Power Flash	Auto, Manual Flash On/Off YES YES YES 50cm - 3.5m (W)/2.0m (T) (at ISO AUTO equivalent) Canon's High Power Flash	Auto, Manual Flash On/Off YES YES - 30cm - 2.0m (at ISO AUTO equivalent) Canon's High Power Flash
<b>SHOOTING</b> Modes  Photo Effects  Drive Modes Continuous Shooting	Auto, Manual, Digital Macro, Special Scene Mode (Portrait, Foliage, Snow, Beach, Fireworks, Underwater, Indoor, Kids & Pets, Night Snapshot), Stitch Assist, Movie  Vivid, Neutral, Low Sharpening, Sepia, Black & White, My Colors (9 settings) Single, Continuous, Self-Timer Approx. 2.0 fps <sup>1</sup> (until memory card becomes full) <sup>2</sup>	Auto, Manual, Scene (Portrait, Night Snapshot, Kids & Pets, Indoor, Underwater, Digital Macro), Stitch Assist, Movie  Vivid, Neutral, Low Sharpening, Sepia, Black & White, My Colors (9 settings) Single, Continuous, Self-Timer Approx. 2.1 fps <sup>1</sup> (until memory card becomes full) <sup>2</sup>	Auto, Manual, Scene (Portrait, Night Snapshot, Kids & Pets, Indoor, Underwater, Digital Macro), Stitch Assist, Movie  Vivid, Neutral, Low Sharpening, Sepia, Black & White, My Colors (9 settings) Single, Continuous, Self-Timer Approx. 2.4 fps <sup>1</sup> (until memory card becomes full) <sup>2</sup>	Auto, Manual, Scene (Portrait, Landscape, Night Snapshot, Indoor, Underwater), Macro, Stitch Assist, Movie  Vivid, Neutral, Low Sharpening, Sepia, Black & White Single, Continuous, Self-Timer Approx. 0.9 fps (speed maintained for up to 17 images) <sup>2</sup>
<b>RECORDING PIXELS/ COMPRESSION</b> Image Size  Compression Movies  Movie Length	(L)3072 x 2304, (M1)2592 x 1944, (M2)2048 x 1536, (M3)1600 x 1200, (S)640 x 480, Postcard Date Imprint Superfine, Fine, Normal (L)640 x 480, 30/15 fps (M)320 x 240, 60/30/15 fps (S)160 x 120, 15 fps Up to 1GB (640 x 480, 320 x 240, 30/15 fps) <sup>2</sup> Up to 3 mins (160 x 120) <sup>2</sup> Up to 1 min (320 x 240, 60 fps) <sup>2</sup>	(L)2592 x 1944, (M1)2048 x 1536, (M2)1600 x 1200, (S)640 x 480, Postcard Date Imprint Superfine, Fine, Normal (L)640 x 480, 30/15 fps (M)320 x 240, 60/30/15 fps (S)160 x 120, 15 fps Up to 1GB (640 x 480, 320 x 240, 30/15 fps) <sup>2</sup> Up to 3 mins (160 x 120) <sup>2</sup> Up to 1 min (320 x 240, 60 fps) <sup>2</sup>	(L)2272 x 1704, (M1)1600 x 1200, (M2)1024 x 768, (S)640 x 480, Postcard Date Imprint Superfine, Fine, Normal (L)640 x 480, 30/15 fps; (M)320 x 240, 60/30/15 fps; (S)160 x 120, 15 fps Up to 1GB (640 x 480, 320 x 240, 30/15 fps) <sup>2</sup> Up to 3 mins (160 x 120) <sup>2</sup> Up to 1 min (320 x 240, 60 fps) <sup>2</sup>	(L)2592 x 1944, (M1)2048 x 1536, (M2)1600 x 1200, (S)640 x 480, Postcard Date Imprint Superfine, Fine, Normal (L)640 x 480, 10 fps; (M)320 x 240, (S)160 x 120, 15 fps Up to 30 sec (640 x 480) <sup>2</sup> Up to 3 mins (320 x 240, 160 x 120) <sup>2</sup>



Specifications

DIGITAL  
IXUS 700



DIGITAL  
IXUS 50



DIGITAL  
IXUS 40



DIGITAL  
IXUS 7<sup>5</sup>



<b>FILE TYPES</b> Still Image Type	JPEG compression (Exif 2.2 [Exif Print] compliant)/ Design rule for Camera File system, Digital Print Order Format [DPOF] Version 1.1 compliant	JPEG compression (Exif 2.2 [Exif Print] compliant)/ Design rule for Camera File system, Digital Print Order Format [DPOF] Version 1.1 compliant	JPEG compression (Exif 2.2 [Exif Print] compliant)/ Design rule for Camera File system, Digital Print Order Format [DPOF] Version 1.1 compliant	JPEG compression (Exif 2.2 [Exif Print] compliant)/ Design rule for Camera File system, Digital Print Order Format [DPOF] Version 1.1 compliant
Movies	AVI [Motion JPEG compression + WAVE (monaural)]	AVI [Motion JPEG compression + WAVE (monaural)]	AVI [Motion JPEG compression + WAVE (monaural)]	AVI [Motion JPEG compression + WAVE (monaural)]
Sound Files	WAVE (monaural)	WAVE (monaural)	WAVE (monaural)	WAVE (monaural)
<b>DIRECT PRINT</b> Canon Printers	Canon SELPHY Compact Photo Printers and PIXMA Printers supporting PictBridge (ID Photo Print, Movie Print supported on SELPHY CP printers only)	Canon SELPHY Compact Photo Printers and PIXMA Printers supporting PictBridge (ID Photo Print, Movie Print supported on SELPHY CP printers only)	Canon SELPHY Compact Photo Printers and PIXMA Printers supporting PictBridge (ID Photo Print, Movie Print supported on SELPHY CP printers only)	Canon SELPHY Compact Photo Printers and PIXMA Printers supporting PictBridge (ID Photo Print, Movie Print supported on SELPHY CP printers only)
PictBridge	YES	YES	YES	YES
<b>OTHER FEATURES</b> My Camera	Start-up image and camera sounds customisation Up to 60 sec per image	Start-up image and camera sounds customisation Up to 60 sec per image	Start-up image and camera sounds customisation Up to 60 sec per image	Start-up image and camera sounds customisation Up to 60 sec per image
Sound Memo	YES	YES	YES	YES
Intelligent Orientation Sensor	YES	YES	YES	YES
Histogram	YES	YES	YES	YES
Playback Zoom	Approx. 2x - 10x	Approx. 2x - 10x	Approx. 2x - 10x	Approx. 2x - 10x
Self Timer	Approx. 2 or 10 sec or Custom	Approx. 2 or 10 sec or Custom	Approx. 2 or 10 sec	Approx. 2 or 10 sec
Menu Languages	English, German, French, Dutch, Danish, Finnish, Italian, Norwegian, Swedish, Spanish, Simplified Chinese, Chinese (traditional), Japanese, Russian, Portuguese, Korean, Greek, Polish, Czech, Hungarian, Turkish	English, German, French, Dutch, Danish, Finnish, Italian, Norwegian, Swedish, Spanish, Simplified Chinese, Chinese (traditional), Japanese, Russian, Portuguese, Korean, Greek, Polish, Czech, Hungarian, Turkish	English, German, French, Dutch, Danish, Finnish, Italian, Norwegian, Swedish, Spanish, Simplified Chinese, Chinese (traditional), Japanese, Russian, Portuguese, Korean, Greek, Polish, Czech, Hungarian, Turkish	English, German, French, Dutch, Danish, Finnish, Italian, Norwegian, Swedish, Spanish, Simplified Chinese, Chinese (traditional), Japanese, Russian, Portuguese, Korean, Greek, Polish, Czech, Hungarian, Turkish
<b>INTERFACE</b> Computer	USB 2.0 High Speed (Mini-B, PTP)	USB 2.0 High Speed (Mini-B, PTP)	USB (Mini-B, PTP)	USB (Mini-B, PTP)
Other	A/V output (PAL/NTSC)	A/V output (PAL/NTSC)	A/V output (PAL/NTSC)	A/V output (PAL/NTSC)
<b>MEMORY CARD</b> Type	Secure Digital (SD) Card, 32MB SD card supplied	Secure Digital (SD) Card, 16MB SD card supplied	Secure Digital (SD) card, 16MB SD card supplied	Secure Digital (SD) card, 32MB SD card supplied
<b>SUPPORTED OPERATING SYSTEM</b> PC	Windows 98SE/Me/2000 SP4/XP/XP SP1-2	Windows 98SE/Me/2000 SP4/XP/XP SP1-2	Windows 98 SE/Me/2000 SP4/XP/XP SP1	Windows 98 SE/Me/2000 SP4/XP/XP SP1
Macintosh	OS X v10.1.5 - 10.3	OS X v10.1.5 - 10.3	OS X v10.1.5 - 10.3	OS X v10.1.5 - 10.3
<b>SOFTWARE</b> Browsing & Printing	ZoomBrowser EX (PhotoRecord)/ImageBrowser	ZoomBrowser EX (PhotoRecord)/ImageBrowser	ZoomBrowser EX (PhotoRecord)/ImageBrowser	ZoomBrowser EX (PhotoRecord)/ImageBrowser
Other Drivers	PhotoStitch TWAIN (Windows 98/2000), WIA (Windows Me)	PhotoStitch TWAIN (Windows 98/2000), WIA (Windows Me)	PhotoStitch, RemoteCapture TWAIN (Windows 98/2000), WIA (Windows Me)	PhotoStitch TWAIN (Windows 98/2000), WIA (Windows Me)
Image Manipulation	ArcSoft PhotoStudio	ArcSoft PhotoStudio	ArcSoft PhotoImpression, ArcSoft VideoImpression	ArcSoft PhotoImpression, ArcSoft VideoImpression
<b>POWER SOURCE</b> Batteries	Rechargeable Li-ion Battery NB-3L (battery and charger supplied)	Rechargeable Li-ion Battery NB-4L (battery and charger supplied)	Rechargeable Li-ion Battery NB-4L (battery and charger supplied)	Rechargeable Li-ion Battery NB-3L (battery and charger supplied)
Battery Life	Approx. 160 shots <sup>3</sup>	Approx. 150 shots <sup>3</sup>	Approx. 140 shots <sup>3</sup>	Approx. 120 shots <sup>3</sup>
A/C Power Supply	Approx. 210 mins playback Optional, AC Adapter Kit ACK900	Approx. 180 mins playback Optional, AC Adapter Kit ACK-DC10	Approx. 180 mins (Playback) Optional, AC Adapter Kit ACK-DC10	Approx. 140 mins (Playback) -
<b>ACCESSORIES</b> Case	Soft Case SC-DC20, Soft Leather Case DCC-70, Digital IXUS Metal (Neck) Strap	Soft Leather Case DCC-60, Body Glove Case DCC-BG30, Digital IXUS Metal (Neck) Strap	Soft Leather Case DCC-60, Body Glove Case DCC-BG30, Digital IXUS Metal (Neck) Strap	Soft Leather Case DCC-30, Body Glove Case DCC-BG10, Digital IXUS Metal (Neck) Strap
Waterproof/ Weatherproof Case	Waterproof Case (40m) WP-DC70, Waterproof Case Weights WW-DC1	All Weather Case (3m) AW-DC30	All Weather Case (3m) AW-DC30	All Weather Case (3m) AW-DC10
Flash Power Supply & Battery Chargers	High Power Flash HF-DC1 AC Adapter Kit ACK900	High Power Flash HF-DC1 AC Adapter kit ACK-DC10	High Power Flash HF-DC1 AC Adapter Kit ACK-DC10	High Power Flash HF-DC1 -
<b>PHYSICAL SPECIFICATIONS</b> Operating Environment	0 - 40°C, 10 - 90% humidity	0 - 40°C, 10 - 90% humidity	0 - 40°C, 10 - 90% humidity	0 - 40°C, 10 - 90% humidity
Dimensions (WxHxD)	89.5 x 57.0 x 26.5mm (excluding protrusions)	86.0 x 53.0 x 20.7mm (excluding protrusions)	86.0 x 53.0 x 20.7mm (excluding protrusions)	90.3 x 47.0 x 18.5mm (excluding protrusions)
Weight (body only)	Approx. 170g	Approx. 130g	Approx. 130g	Approx. 100g
<p>1 Large/Fine with LCD monitor Off 2 Depending on memory card speed/capacity 3 Based on the CIPA Standard and using the batteries and memory card format supplied with the camera, except where indicated</p>		<p>Some images are simulated for clarity of reproduction. All data is based on Canon standard testing methods except where indicated. Specifications are subject to change without notice. ™ and ©: All company and/or product names are trademarks and/or registered trademarks of their respective manufacturers in their markets and/or countries.</p>		



you can  
**Canon**



OFFICIAL SUPPLIER

**Canon Inc**  
[www.canon.com](http://www.canon.com)

**Canon Europa NV**  
[www.canon-europe.com](http://www.canon-europe.com)



© Canon Europa NV 2005