

you can
Canon

PowerShot G6

For your mind.
And your heart.



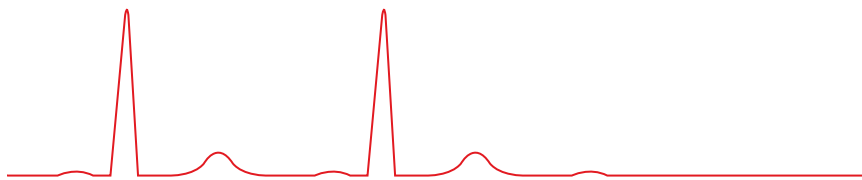
OFFICIAL SUPPLIER

When practicality...

A perfect combination of speed, power and flexibility – the PowerShot G6 has the ability to excite even the most accomplished photographer with its potential.



...meets creativity.



**7.1
MEGA
PIXELS**

POWER THAT PUTS YOUR MIND AT EASE

The PowerShot G6 is equipped with an impressive range of technical features – a 7.1 megapixel CCD sensor, 4x optical zoom lens and large 2.0" vari-angle LCD to name a few. It's also packed with Canon's Visionary Technologies to ensure stunning images and fast camera operation whenever you press the shutter.

POTENTIAL THAT GETS YOUR HEART RACING

The creative possibilities offered by the PowerShot G6 are sure to inspire any serious photographer. With 12 different shooting modes (including two custom modes), a variety of optional conversion lenses and EX Speedlite System flashes (enabling studio and lowlight shots), you can use this camera to shoot whatever your heart desires.

DESIGN THAT INSPIRES

All this creative potential is housed in an ergonomic design that's so intuitive to use you'll feel like you've had a PowerShot G6 in your hand for years. This ingenious design makes it one of the most compact digital cameras available for its level of technical specification. The large moulded rubber grip positions your hand within comfortable reach of the mode dial and function buttons – much like the layout of an SLR – while the 2.0" vari-angle LCD gives you so much freedom to move, it will instantly change the way you see photography.



Open it, twist it, turn it, close it.
The PowerShot G6's vari-angle LCD
lets you look at photography from
a new perspective.



Advanced technology to take your photography forward.

With over 60 years of experience in optical engineering and a number of proprietary technologies such as DIGIC and iAPS, Canon had a lot to draw from when they designed the PowerShot G6.

7.1 MEGAPIXELS

Every nuance of every shot is expertly captured by the PowerShot G6's 7.1 megapixel CCD sensor – more than enough resolution to ensure tiny details are faithfully rendered. This large sensor size can also record stills at a massive 3072 x 2304 pixels (maximum) – allowing you to print to A3+ and still have room to crop in if needed.

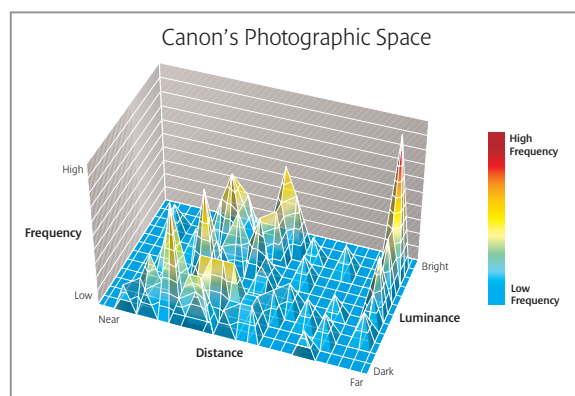
iSAPS TECHNOLOGY

As soon as you press the shutter, Canon's unique iSAPS (Intelligent Scene Analysis based on Photographic Space) evaluates your composition against a vast in-camera database of different images and settings. In a fraction of a second it establishes a statistical relationship between

factors such as focal length and scene brightness, dramatically improving the camera's ability to interpret shooting situations and deliver brilliant images without delay. iSAPS also cuts the time required to obtain AF data resulting in a faster AF function and faster overall camera operation.

HIGH SPEED DIGIC PROCESSOR

Canon's unique DIGIC processor works at consistently high speeds, executing complex processing functions to optimise the camera's performance every time you take a shot. This results in superb image quality, faster and more accurate auto focus performance and more responsive camera controls. By making the camera run so smoothly, the DIGIC processor also allows for extended battery life, so you can shoot for longer on a single battery charge.





COLOUR RENDERING

The Canon Image Rendering technology in the PowerShot G6 uses complex algorithms based on an extensive database of imaging information to capture colour data and convert it to standard colour spaces. Either on a monitor or on the printed page, you'll be amazed at how naturally vibrant colours appear – just as they are in your mind's eye.

4X OPTICAL ZOOM

The PowerShot G6's 4x optical zoom lens (16x combined) provides the razor sharp definition and stunning colours you would expect from a Canon original lens, while its 35 – 140mm (35mm equivalent) focal length provides a level of flexibility for a variety of occasions.

4.0x
ZOOM
Optical

The 4x optical zoom lens consists of 8 elements in 7 groups (including 2 aspherical lenses).



FAST F2.0 APERTURE

With the PowerShot G6's fast f2.0 aperture (allowing for a higher shutter speed and lower ISO speed equivalent) you can be confident of getting great results in low light conditions.

HIGH ZOOM SPEED

By improving the zoom drive mechanism in the PowerShot G6, Canon have shaved more than half a second off the time it takes to go from wide to telephoto on the lens – valuable moments that could make all the difference.

SUPER MACRO

The Super Macro function allows you to take photographs from as close as 5cm whilst still maintaining accurate focus (provided the lens is at the wide position).

A LENS FOR EVERY SHOT

The PowerShot G6's versatility is emphatically illustrated with its range of optional conversion lenses. Wide angle, telephoto and close-up lenses provide professional-level capability that is guaranteed to expand your creative repertoire.



1. 24.5mm equivalent with wide converter
2. 35mm equivalent
3. 140mm equivalent
4. 245mm equivalent with tele converter

Make the most of every moment.

With the PowerShot G6's 12 different intelligent shooting modes, you have all the flexibility you need to really push your creativity to the limit. The 6 creative modes – including a fully manual mode – are enough to quicken any photographer's pulse, while the 6 automatic modes give you the peace-of-mind that comes with knowing you'll never miss a shot. The SLR-style Mode Dial at the back of the camera makes it quick and easy to shift between modes.



◀ **PORTRAIT**

A larger aperture is chosen for reduced depth-of-field, ensuring any distracting background is blurred and the subject is perfectly in focus.

LANDSCAPE

In this mode, a smaller aperture is chosen for increased depth-of-field, so both foreground and background are in focus.

▼ **NIGHT SCENE**

Flash and available light are carefully balanced by using a slow shutter speed to capture all the background details, while the subject is illuminated with a fill-in flash.



STITCH ASSIST

Using the supplied PhotoStitch software, this feature lets you shoot a sequence of up to 26 images and then merge them together into a larger image to create long panoramas.

MOVIE

This mode lets you shoot up to 3 minutes of movie footage, with sound, at 15 frames per second (10 frames per second in VGA mode for up to 30 seconds). You can then play it back and edit it instantaneously using the camera's LCD.

▼ **M** MANUAL

When you want complete control, this allows you to set all the parameters for your shot, including aperture, shutter speed and focus.



▲ **Tv** SHUTTER PRIORITY AE*

In this mode you can freeze a moving subject or create a blurred, flowing effect by controlling the shutter speed. The camera automatically selects the best aperture based on the available light.

C CUSTOM

The PowerShot G6 has two custom modes where you can save your own combination of settings for future use. This allows for a quick set-up time, meaning you're less likely to miss those once-in-a-lifetime shots.

P PROGRAM AE

The camera automatically sets both the shutter speed and aperture. You control all the other parameters such as white balance and flash.

AUTO AUTO

The camera selects all the parameters based on the shooting conditions, so you can just point and shoot.

◀ **Av** APERTURE PRIORITY AE*

You control the depth-of-field with this mode by setting the aperture. The camera then automatically selects the appropriate shutter speed for perfect exposure.

* Switching on the safety shift function when in Aperture Priority AE or Shutter Priority AE Mode protects against over or underexposure by automatically shifting the settings to compensate for the shooting conditions. The settings will only be shifted as far as necessary in order to stay as close to your intended effect as possible.



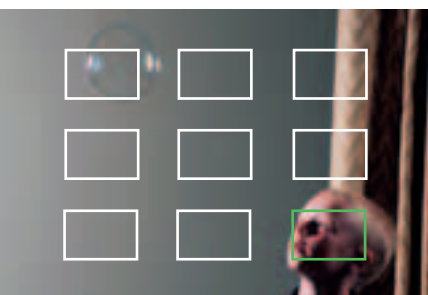


More options to charge your creative spirit.

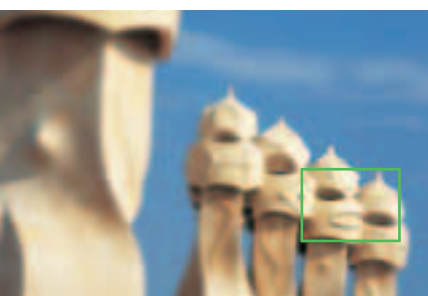
The PowerShot G6 has even more features for the serious photographer. 9-Point AiAF and Flexizone AF/AE technology ensure perfectly focussed compositions, while the built-in ND filter makes sure your images are free from flaring.

9-POINT AIAF

The PowerShot G6 uses Canon's 9-Point Artificial Intelligent Auto Focus (AiAF) system to automatically detect your subject from nine fixed focusing areas across your shooting scene. This means your subject will be sharp and in focus, even if it's off-centre.



9-Point AiAF



Flexizone AF/AE

FLEXIZONE AF/AE

The FlexiZone AF/AE function lets you freely scroll the auto focus area around the scene to select the subject you want to focus on. Your exposure can then be automatically weighted for your selected subject.

INTELLIGENT ORIENTATION SENSOR

A tiny sensor in the camera detects its orientation – whether portrait or landscape – whenever a shot is taken. This gives more accurate AE and AWB – compensating, for example, for brighter sky at the top of an image. It also automatically detects a shot's orientation when downloaded to a PC, ensuring it's displayed the right way up.

RAW MODE

The PowerShot G6 features 16 different ways to record your images. Five sizes and three compression ratios produce 15 different possibilities, with the sixteenth being RAW mode. When shooting in this mode, maximum image data can be recorded with loss-less (reversible)

compression and therefore suffer no reduction in definition. When downloaded to your computer, your image can then be manipulated and edited as you like. You can even save an image as a RAW file while simultaneously saving it as a JPEG – in any one of the five size options.

BUILT-IN NEUTRAL DENSITY FILTER

This feature is especially useful when the subject or composition requires a slow shutter speed or large aperture but the lighting conditions are bright, or when using a flash for Macro photography. It cuts the amount of light reaching the sensor by three stops without affecting the colour balance to deliver an image free from flaring.

MOVE THROUGH MAGNIFIED IMAGES

The PowerShot G6 allows you to move through magnified images on the LCD during playback mode. This is especially useful for selecting the shot with the best focus from a series taken of the same scene.

Stop shooting. Start sharing.

Touch as many hearts and minds as possible with the PowerShot G6's image management software. Take your time manipulating the colour balance or finding the perfect crop, or save time with easy image transfer and printing options.

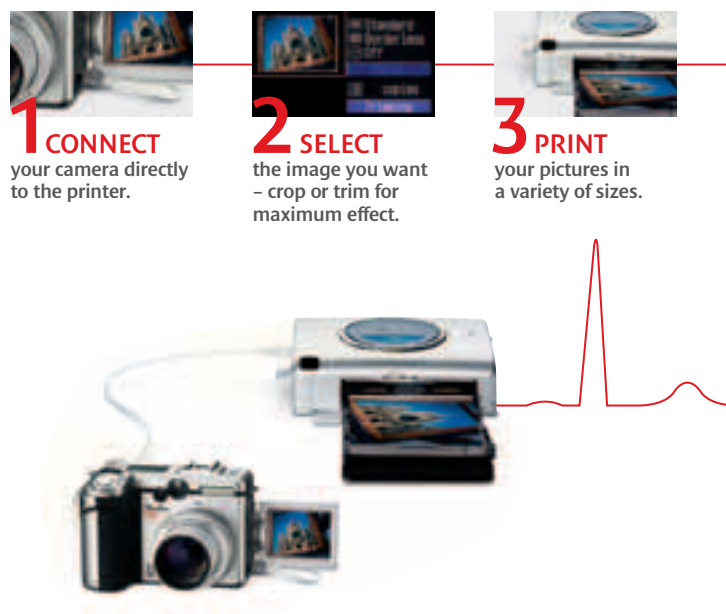
DIRECT PRINTING

The PowerShot G6 is PictBridge compliant, meaning you can print directly to any PictBridge-compatible printer – with enough resolution to go all the way to A3 and beyond depending on your printer. The camera also supports all Canon Compact Photo Printers and PictBridge-compatible Canon Pixma Printers – including the Canon Compact Photo Printer CP-330, which allows you to print wherever you are. The ultimate mobile photo lab.

IMAGE MANAGEMENT

High-performance software applications that let you manage and manipulate your images come as standard with the PowerShot G6. ZoomBrowser EX (for Windows) and ImageBrowser (for Mac) allow you to store, print and transfer images between your camera and computer. Integrated into this software is the RAW Image Task (for fast transfer, preview and conversion of Canon RAW image files) and RemoteCapture Task for taking pictures remotely via your computer.

The PowerShot G6 also features a Direct Transfer option (for Windows only), which allows you to send only your selected images directly to PC at the touch of a button.

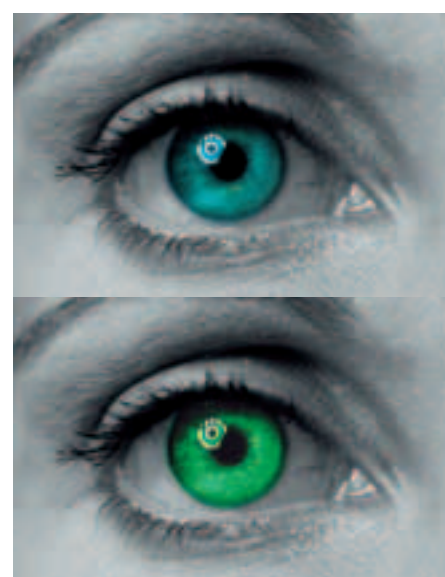


ArcSoft Photo and Video editing software is also supplied, for those who like to add a little more imagination to their images. You can also create personal photo folders from a variety of layout templates, or, using PhotoRecord software (Windows only), your own layouts for viewing and printing. With the PowerShot G6, you can either view your shots on the LCD, on your computer, or after you've printed them (up to A3+ size) on a Canon Pixma Printer.

The CANON iMAGE GATEWAY* is also a useful management tool – 100MB of free Internet space for storing images, creating albums and sharing images with colleagues, clients, friends and family.

*Not available in all regions.

CANON
iMAGE
GATEWAY



The full suite of software allows creative image manipulation.



No limits.

Push your creativity as far as you want with the PowerShot G6's optional accessories – like the EX Speedlite System flashes that give you more flexibility in lowlight conditions and even let you take studio shots.

KIT CONTENTS



OPTIONAL ACCESSORIES



* Not all functions of the flash are supported



Specifications PowerShot G6

| | |
|---|---|
| IMAGE SENSOR Type Effective Pixels Colour Filter Type | 1/1.8" CCD Approx. 7.1M Primary Colour |
| IMAGE PROCESSOR Type | DIGIC with iSAPS technology |
| LENS Focal Length Zoom Maximum f/number Construction | 7.2 – 28.8mm (35mm film equivalent: 35 – 140mm) Optical 4x, digital approx. 4.1x, combined approx. 16x f/2.0 – f/3.0 8 elements in 7 groups (2 aspherical elements) |
| FOCUSING Type AF System/Points AF Modes AF Point Selection AF Lock AF Assist Beam Manual Focus Focus Bracketing Closest Focusing Distance | TTL 9-point AiAF, 1-point AF (Any position is available or fixed centre) Single, Continuous Manual selection using Flexizone AF/AE On/Off Selectable YES YES YES YES 5cm |
| EXPOSURE CONTROL Metering Modes AE Lock Exposure Compensation AEB ISO Speed Equivalent | Evaluative, Centre-weighted average, Spot (centre or linked to focusing frame) On/Off Selectable +/- 2 EV in 1/3 stop increments YES AUTO, 50, 100, 200, 400 |
| SHUTTER Speed | 15 – 1/2000 sec (Slow Shutter speeds of 1.3 sec and more, available in Manual and Shutter Priority AE modes only. Shutter speeds of 1.3 sec and more operate with noise reduction. Certain combinations of shutter speed and aperture may not be available.) |
| WHITE BALANCE Type Settings | TTL Auto, Daylight, Cloudy, Tungsten, Fluorescent, Fluorescent H, Flash, Custom (2 modes) |
| VIEWFINDER Viewfinder Dioptre Correction | Real-image zoom, optical viewfinder YES |
| LCD MONITOR Monitor Coverage Brightness | Vari-angle 2.0" P-Si TFT, approx. 118,000 pixels 100% Adjustable to one of two levels |
| FLASH Modes Red-eye Reduction Slow Sync Speed Flash Exposure Compensation Flash Exposure Lock 2nd Curtain Synchronisation Built-in Flash Range External Flash | Auto, Manual Flash On/Off YES YES +/- 2 EV in 1/3 stop increments YES YES 70cm – 5.0m (W)/4.0m (T) (at ISO 100 equivalent) E-TTL with EX series Speedlites, wireless multi-flash support |
| SHOOTING Modes Photo Effects Drive Modes Continuous Shooting Intervalometer | Auto, Program AE, Shutter Priority AE, Aperture Priority AE, Manual, Custom (2 modes), Portrait, Landscape, Night Scene, Stitch Assist, Movie Vivid, Neutral, Low Sharpening, Sepia, Black & White, Custom Single, Continuous, Self-timer, Wireless Control High Speed at approx. 2.0 fps ¹ (speed maintained for up to 14 images) ² Normal at approx. 1.2 fps ¹ (speed maintained for up to 23 images) ² Up to 100 shots in 1 - 60 minute increments ² |
| RECORDING PIXELS/ COMPRESSION Image Size | (L)3072x2304, (M1)2592x1944, (M2)2048x1536, (M3)1600x1200, (S)640x480 |

| | |
|--|---|
| RECORDING PIXELS/ COMPRESSION (CONT.) Compression Movies Movie Length | Superfine, Fine, Normal or RAW (max. resolution only) (L)640x480, 10 fps; (M)320x240 and (S)160x120, 15 fps Up to 3mins (320x240, 160x120) ² ; Up to 30sec (640x480) ² |
| FILE FORMAT Still Image Format RAW+JPEG Simultaneous Recording Movies Sound Files | JPEG (Exif 2.2 [Exif Print] compliant)/Design rule for Camera File system, RAW, Digital Print Order Format [DPOF] Version 1.1 compliant YES AVI [Motion JPEG + WAVE (monaural)] WAVE (monaural) |
| DIRECT PRINT Canon Printers PictBridge | Canon Compact Photo Printers and Pixma Printers supporting PictBridge (ID Photo Print, Movie Print supported on CP printers only) YES |
| OTHER FEATURES My Camera Sound Memo Intelligent Orientation Sensor Histogram Playback Zoom Self Timer Menu Languages | Start-up image and camera sounds customisation Up to 60 sec YES YES Approx. 2x – 10x Approx. 2 or 10 sec English, German, French, Dutch, Danish, Finnish, Italian, Norwegian, Swedish, Spanish, Simplified Chinese, Japanese, Russian, Portuguese |
| INTERFACE Computer Other | USB (PTP) A/V output (PAL/NTSC) |
| MEMORY CARD Type | CompactFlash Type I/II (Microdrive compatible) ³ 32MB CompactFlash card supplied |
| SUPPORTED OPERATING SYSTEM PC Macintosh | Windows 98SE/Me/2000 SP4/XP/XP SP1 OS X v10.1.5 – 10.3 |
| SOFTWARE Browsing & Printing Other Drivers Image Manipulation | ZoomBrowser EX (PhotoRecord)/ImageBrowser PhotoStitch TWAIN (Windows 98/2000), WIA (Windows Me) ArcSoft PhotoStudio, ArcSoft VideoImpression |
| POWER SOURCE Batteries Battery Life A/C Power Supply | Rechargeable Li-ion Battery BP-511A/BP-514/BP-511/ BP-512 (BP-511A battery and charger supplied) Approx. 300 shots ⁴ ; Approx. 400 min playback Compact power adapter CA-560 |
| ACCESSORIES Case Lenses Flash Remote Controller/Switch Power Supply & Battery Chargers | Soft Case SC-DC40 1.75x Tele-converter TC-DC58N; 0.7x Wide Converter WC-DC58N; Close-up Lens 250D (58mm); Conversion Lens Adapter LA-DC58D; Lens Hood LH-DC30 Canon Speedlites (220EX, 420EX, 550EX, 580EX ⁵ , Macro-Ring-Lite MR-14EX, Macro Twin Lite MT-24EX, Speedlite Transmitter ST-E2) Wireless Controller WL-DC100 (supplied) AC Power Adapter CA-560, Battery Charger (single) CB-5L (supplied in camera kit), Battery Charger (Twin) CG-560/570, Car Battery Adapter CR-560, Car Battery Cable CB-560/570 |
| PHYSICAL SPECIFICATIONS Operating Environment Dimensions (W x H x D) Weight (body only) | 0 – 40°C, 10 – 90% humidity 104.9 x 72.8 x 73.1mm (excluding protrusions) Approx. 380g |
| <p>1 Large/Fine with LCD monitor off 2 Depending on memory card speed/capacity 3 Compatible with all memory card capacities, including cards of 2GB and more 4 Based on the CIPA Standard and using the batteries and memory card format supplied with the camera, except where indicated 5 Not all functions of the flash are supported</p> <p>Some images are simulated for clarity of reproduction. All data is based on Canon standard testing methods unless specified otherwise. Specifications are subject to change without notice. ™ and ©: All company and/or product names are trademarks and/or registered trademarks of their respective manufacturers in their markets and/or countries.</p> | |

7.1 MEGA
PIXELS

16x
ZOOM
Optical & Digital
Combined

DIGIC

9 point
AiAF

FlexiZone
CONTROL

Movie
VGA



PictBridge

DIRECT
PRINT

BUBBLE JET
DIRECT

CANON
IMAGE
GATEWAY

Exif Print

DPOF

you can
Canon

Canon Inc
www.canon.com

Canon Europa NV
www.canon-europe.com

© Canon Europa NV 2004

