

SPECIFICATIONS

DIGITAL CAMERA FinePix S3 PRO

Type of camera	Interchangeable-lens SLR-type digital camera
Number of effective pixels*	12.34 million (S-pixel: 6.17million, R-pixel: 6.17million) pixels
CCD sensor	23.0x15.5mm Super CCD SR II Number of total pixels: 12.9million (S-pixel: 6.45million, R-pixel: 6.45million) pixels
Number of recorded pixels	Still image: 4,256x2,848 (12.1million)/3,024x2,016/ 2,304x1,536/1,440x960 pixels
Storage media	Slot No.1: xD-Picture Card™ (16MB - 512MB) Slot No.2: CF/Microdrive™ (Compatibility is listed on Fujifilm website: http://home.fujifilm.com/products/digital/)
File format	JPEG-DCF compatible (Exif Ver 2.21**) (Design rule for Camera File system compliant / DPOF-compatible) CCD-RAW (14bit)

Viewfinder	Fixed-eyelevel pentaprism, built-in diopter adjustment (-2.0 ⁻¹ to +1.0m ⁻¹) Frame coverage: Approx.93% vertical, Aprox.95% horizontal
Eye point	24 mm
Focusing screen	Clear Matte Screen II with focus brackets and On-demand Grid Lines able to display
Viewfinder information	Focus indications, Metering system, AE lock, Shutter speed, Aperture, Exposure mode, Electronic analog exposure display/exposure compensation display, Frame counter/exposure compensation value, Ready-light, Multiple exposure, Focus area, Flash exposure compensation, Five sets of focus brackets (area) /Spot metering area, Center-Weighted metering, On-Demand Grid Lines able to display
LCD panel (top panel) display	Shutter speed/Exposure compensation value, Aperture, Exposure compensation, Flash exposure compensation, Auto exposure bracketing, Bracketing bar graphs, flexible program, Flash sync mode, AF area mode Focus area, Battery power
LCD monitor	2.0-inch low temperature polysilicon TFT (approx. 235,000 pixels, wide-type LCD, approx. 100% frame coverage)
Built-in flash	Guide No.12 (ISO 100, m), flash coverage: 20mm or longer lens
Flash sync. mode	Front-curtain sync (normal sync), Red-eye reduction, Red-eye reduction with slow sync, Slow sync, Rear curtain sync
Ready light	Lights up when flash fully charged with built in flash Blinks for 3 sec. for full output warning
Accessory shoe	Standard ISO-type with hot-shoe contact (Safety lock provided)
Remote release	Electronic shutter release
Self-timer	Electronically controlled: timer duration: 20sec./10sec./5sec./2sec.
Video output	NTSC/PAL selectable
Digital Interface	USB 2.0 (High-speed) for data storage, IEEE1394 for data storage & shooting
Sync contact	X-contact only: flash synchronization up to 1/180 sec.
Power source	4 AA type Ni-MH batteries (sharing power with camera body), AC Power Adapter AV-5VX (Optional)

Number of images/recording time

Quality	4256 × 2848				3024 × 2016				2304 × 1536				1440 × 960			
	RAW-WIDE	RAW-STD	JPEG F	JPEG N	JPEG F	JPEG N	JPEG F	JPEG N	JPEG F	JPEG N	JPEG F	JPEG N	JPEG F	JPEG N	JPEG F	JPEG N
Image Data Size	Approx. 25 MB	Approx. 13 MB	Approx. 4.7 MB	Approx. 2.4 MB	Approx. 3.0 MB	Approx. 1.5 MB	Approx. 1.7 MB	Approx. 880 KB	Approx. 1.0 MB	Approx. 520 KB						
DPC-16 (16MB)	0	1	3	6	5	10	8	17	14	29						
DPC-32 (32MB)	1	2	6	13	10	20	17	35	30	59						
DPC-64 (64MB)	2	4	13	26	21	42	36	72	61	120						
DPC-128 (128MB)	5	9	26	53	42	84	72	144	122	241						
DPC-256 (256MB)	10	19	53	107	85	169	146	290	245	484						
DPC-512 (512MB)	20	39	107	214	170	339	292	580	491	967						
340MB Microdrive	13	27	73	146	116	232	200	396	338	671						
1GB Microdrive	41	81	220	437	349	698	597	1173	995	1932						

Lens mount	Nikon F mount (with AF coupling, AF contacts)
Usable lenses	D/G type AF Nikkor lenses: All functions possible AF Nikkor other than D/G type: All function except 3D Matrix Metering possible Non-CPU: Usable in Manual exposure mode (exposure meter cannot be used)
Lens servo	Single Servo AF (S), Continuous Servo AF, Manual focus (M) Focus tracking automatically activated in subject's status in Single Servo AF (S) or Continuous Servo AF (C)
Picture angle	Approx. 1.5x focal length in 35mm format equivalent
Auto focus	TTL phase detection Detection range: EV -1 to EV 19 (ISO 100 equivalent at normal temperature)
Focus areas	One of five focus areas can be selected
AF Area mode	Single Area AF Dynamic AF (Dynamic AF Mode with Closest Subject Priority is available)
Focus lock	Focus is locked by pressing AE/AF Lock button or lightly pressing shutter release button in Single Servo AF
Shutter	Electronically controlled vertical-travel focal-plane shutter
Shutter speed	30 sec. to 1/4000 sec. Bulb, X-contact, Max. 1/180 sec.
Sensitivity	Equivalent to ISO 100/160/200/400/800/1600
Exposure metering system	TTL full-aperture exposure metering system Three metering systems selectable (limitations with lens used) • 3D-10 Matrix Metering: EV 0-21 • Center-Weighted metering: EV 0-21 • Spot Metering: EV 3-21
Exposure compensation	±3 EV range, in 1/2 steps
Auto exposure lock	Detected exposure value locked by pressing AE/AF lock button
Exposure modes	P: Auto-Multi Program (Flexible program possible), S: Shutter-priority Auto, A: Aperture-priority Auto, M: Manual
White balance	Automatic Manual: Fine, Shade, Fluorescent light (Daylight), Fluorescent light (Warm White), Fluorescent light (Cool White), Incandescent light, Custom1, Custom2

Dimensions	147.8 (W)×135.3 (H)×78.5 (D) mm/5.8 (W)×5.3 (H)×3.1 (D) in.
Weight	Approx. 815g/28.7oz. (excluding battery & lens)
Camera functions	
Shooting modes	Single frame shooting Continuous shooting • D-range: STD mode: Max. 2.5 frames/sec. RAW: Up to max. 7 frames, JPEG: Up to max. 12 frames • D-range: WIDE mode: RAW, Max. 1.4 frames/sec. Up to 3 frames JPEG, Max. 1 frame/sec. Up to 6 frames
Parameter setting	Preview mode/Multiple exposure Color ——— HIGH/ STD/ ORG/ B&W Film simulation — FILM SIMULATION F1/ F2 Color space ——— sRGB/ Adobe-RGB Contrast ——— HARD/ STD/ ORG Sharpness ——— HARD/ STD/ ORG D-range ——— WIDE : AUTO / WIDE 1/ WIDE 2 STD
Playback function	Single frame/ Thumbnails in 9 segments Playback zoom/ Histogram indication/ Standard chart
Accessories included	4 AA type Ni-MH batteries, Battery Charger for Ni-MH batteries, Shoulder Strap, Body cap, Eyepiece cap, LCD cover, Cable Holder, USB cable (with Filter), IEEE 1394 cable, Video cable CD-ROM: USB driver, FinePixViewer, ImageMixer VCD2 for FinePix, RAW FILE CONVERTER LE
Optional accessories	xD-Picture Card™: DPC-16, DPC-32, DPC-64, DPC-128, DPC-256, DPC-512 PC Card Adapter DPC-AD CompactFlash™ Card Adapter DPC-CF Image Memory Card Reader DPC-R1 xD-Picture Card™ USB DRIVE DPC-UD1 AC Power Adapter AC-5VX Battery Charger with Battery BK-NH2 Rechargeable Battery 2HR-3UF (2 AA type Ni-MH) Hyper-Utility Software HS-V2 Ver.3.0

Lens Compatibility Chart (Types of CPU lenses and other usable lenses/accessories)

Mode	Focus mode			Exposure mode		Metering system		
	Autofocus	Manual with electronic rangefinder	Manual	Any mode other than M	M	Matrix 3D 10-segment	10-segment	Centre-Weighted, Spot
Lens/accessories								
D-type AF Nikkor ³ , G-type AF Nikkor ³ , AF-S, AF-I Nikkor	✓	✓	✓	✓	✓	✓	—	✓
PC Micro-Nikkor 85 mm f/2.8D ⁴	—	✓ ⁵	✓	—	✓	✓	—	✓
AF-I/AF-S Teleconverter ⁶	✓ ⁷	✓ ⁷	✓	✓	✓	✓	—	✓
Non-D/G-type AF Nikkor (except AF Nikkor for F3AF)	✓	✓	✓	✓	✓	—	✓	✓
AI-P Nikkor	—	✓ ⁸	✓	✓	✓	—	✓	✓
AI-S or AI type Nikkor, Series-E, AI-modified Nikkor	—	✓ ⁸	✓	—	✓ ¹⁰	—	—	—
Medical-Nikkor 120 mm f/4	—	✓	✓	—	✓ ¹¹	—	—	—
Reflex-Nikkor	—	—	✓	—	✓ ¹⁰	—	—	—
PC-Nikkor	—	✓ ⁵	✓	—	✓ ¹⁰	—	—	—
AI-S or AI type Teleconverters	—	✓ ⁷	✓	—	✓ ¹⁰	—	—	—
Bellows Focusing Attachment PB-6 ¹²	—	✓ ⁷	✓	—	✓ ¹⁰	—	—	—
Auto Extension Rings (PK-11A, PK-12, PK-13 and PN-11)	—	✓ ⁷	✓	—	✓ ¹⁰	—	—	—

* Number of effective pixels: The number of pixels on the image sensor which receive input light through the optical lens, and which are effectively reflected in the final output data of the still image.

** Exif 2.21 is a newly revised digital camera file format that contains a variety of shooting information for optimal printing.



Specifications are subject to change without notice.

✓ Compatible — Incompatible

- Spot Metering area can be shifted with focus area selector with CPU Nikkor lens.
- IX-Nikkor lenses cannot be attached.
- This camera is compatible with the Vibration Reduction function of the VR Nikkor lens.
- The camera's exposure metering and flash control system do not work properly when shifting and/or tilting the lens, or when using an aperture other than the maximum aperture.
- Without shifting and/or tilting the lens
- Compatible with AF-S and AF-I Nikkor except AF-S 17-35 mm f/2.8D IF-ED, AF-S 28-70 mm f/2.8D F-ED, AF-S 12-24mm f/4G, AF-S DX ED 17-55mm f/2.8G, AF-S DX ED 18-70mm f/3.5-4.5G, AF-S ED 24-85mm f/3.5-4.5G and AF-S VR ED 24-120mm f/3.5-5.6G.
- With maximum effective aperture of f/5.6 or faster
- With maximum aperture of f/5.6 or faster.
- Some lenses/accessories cannot be attached.
- With exposure mode set to Manual. The exposure meter cannot be used.
- With exposure mode set to Manual and shutter speed set to 1/60 sec. or slower but the exposure meter cannot be used.
- Can be mounted when used with the Nikon Auto extension ring.
• Reprocopy Outfit PF-4 can be attached in combination with Nikon Camera Holder PA-4.
Note: Please refer to the web site (<http://home.fujifilm.com>) for more details of "Lens Compatibility"

For more information on the full range of Fujifilm digital products, please visit our Website: <http://home.fujifilm.com>



4th GENERATION SUPER CCD SR II | 12.34M Effective Pixels (S6.17M+R6.17M) | Nikon F mount | IEEE 1394 | USB 2.0

FinePix S3 Pro

NEW

EVOLUTIONARY EXCELLENCE FOR THE DIGITAL PROFESSIONAL



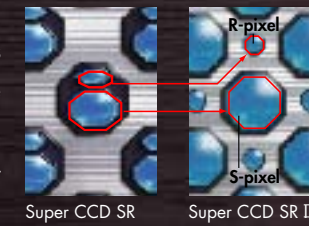


CCD-RAW, 1/500 sec., f/5.6, ISO 100 equivalent

The Ideal: The Evolution of a New Standard in Digital Quality

**Equipped with the Super CCD SR II,
the FinePix S3 Pro delivers
super image quality of an amazing
12.34 million effective pixels**
(S-pixel: 6.17 million, R-pixel: 6.17 million)

No other camera has anything like it: the FinePix S3 Pro is equipped with the newly developed 23.0x15.5mm-format Super CCD SR II. With a remarkable 12.34 million effective pixels (S-pixel: 6.17 million, R-pixel: 6.17 million), the FinePix S3 Pro delivers an obvious difference in image quality. With an ultra-high resolution maximum image size of 12.1 million recording pixels,



detail is astonishing. In addition to this striking image resolution, the image quality of Super CCD SR II evolves to the next level. It yields an improved signal-to-noise ratio and consistently natural color reproduction. It's the perfect digital solution for studio and wedding photographers – or for anyone who demands the highest possible image quality and detail from their DSLR.

Wider dynamic range for richer tonality

The unique Super CCD SR II sensor mimics the structure of photographic film by using a combination of low-sensitivity R-pixels and high-sensitivity S-pixels, employing extremely precise design and construction for each pixel.



This dramatically broadens dynamic range, assuring exceptionally faithful rendition from highest light to deepest shadows. In short: digital photography with the rich tonality of film.

Extended ISO sensitivity range for shooting versatility

With a selection of ISO-equivalent sensitivities of 100/160/200/400/800/1600, the FinePix S3 Pro is ready for virtually any light conditions. And thanks to its new-generation sensor and processing technology, noise is not a significant



concern at any ISO setting. The FinePix S3 Pro handles a wide range of ISO sensitivity with ease, making it a natural for any type of photography, from nature-in-the-wild to studio portraits.

New image processor boosts image quality

Contributing both to image quality and exceptional shooting speed is the FinePix S3 Pro's state-of-art image processor. It blazes through even the largest image files, making operation quicker and more responsive than ever before. At the same time, the new image processor boosts total image quality by increasing resolution, reducing noise, and improving color reproduction.





CCD-RAW, 1/4 sec., f/8, ISO 100 equivalent

The Philosophy: Intuitive Operation for the Creative Professional

Dynamic range customization option

The entirely new Dynamic Range Customizing function allows you to select a dynamic range setting of Auto or Manual (100%, 230%, 400%), optimizing response for any specific subject or



shooting conditions. Creative use of this function lets you capture high-contrast images or subtle scenes with smooth gradation from highlights through shadows.

Accurate exposure and control • D-TTL flash control system

The FinePix S3 Pro gives you a choice of three TTL metering modes (3D-10 Matrix, Center-weighted, Spot), guaranteeing accurate exposure in virtually any light. And the innovative D-TTL



flash control system, compatible with Nikon DX Type Speedlights, makes it easy to take balanced fill-flash pictures even under the most complex lighting conditions.

• Complete exposure versatility

With four modes for controlling aperture and shutter speed, the FinePix S3 Pro offers complete exposure versatility, no matter what your style of shooting.



simplest autoexposure.

S Shutter-priority Auto: Allows you to select any shutter speed between 1/4000-second to 30 seconds.

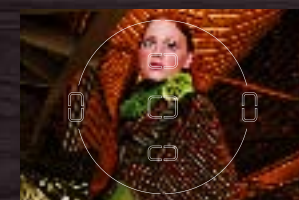
A Aperture-priority Auto: Ideal for times when your first concern is controlling depth of field.

M Manual: Lets you freely set both the shutter speed and aperture.

Auto-Multi program: Works with any of the FinePix S3 Pro's metering modes, including 3D Matrix Metering, to provide the quickest and

High-speed five-area AF system

Five area autofocus sensors provide wide coverage along both the horizontal and vertical axes of the frame – ideal for fast, creative composition.



Alternatively you can designate any of the five sensors as primary focus point, allowing highly effective action and sequence photography.

Virtual film-simulation function

Also new with the FinePix S3 Pro is a unique Film-image Simulating Mode, allowing you to select a specific type of image quality just as you previously would have chosen a type of film depending on subject and shooting conditions.



Film simulation F2 mode: Simulates the highly saturated color and impact of such popular professional-use films as Fujichrome films. This setting is ideal for landscape and nature photography.

Film simulation F1 mode: Yields smooth, extended tonality, faithful color reproduction, and natural-looking skin tones. This setting is specifically optimized for portrait photography.



High-speed continuous shooting

The FinePix S3 Pro processes even the largest image files with remarkable speed. The high-speed continuous shooting mode lets you take up to 12 consecutive shots at 2.5 frames/sec. (at Dynamic range STD mode, JPEG format), even at the largest file size.



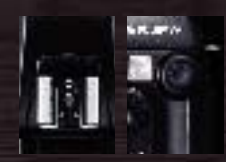


CCD-RAW, 1/125 sec., f/16, ISO 100 equivalent

The Achievement : An Unsurpassed Combination of Innovative Features



Nikon F-mount compatible
The FinePix S3 Pro features a Nikon F-compatible mount that provides full functionality with all Nikkor AF-D/G lenses, including the latest AF-S type professional optics.



Dual flash interfaces
The FinePix S3 Pro is equipped with both a conventional hot shoe and a synchro terminal for connecting external flash units for studio and indoor/outdoor location photography. TTL sync shutter speed is 1/180 second.



Dual high-speed interfaces
The FinePix S3 Pro offers both high-speed IEEE 1394 (Firewire) and USB 2.0 (High-speed) interfaces. Both make possible extremely rapid transfer of images. Used with HS-V2 software, the IEEE 1394 interface allows you to control the FinePix S3 Pro remotely from your PC with ease.



Dual media slots
Dual media slots accept both xD-Picture Cards™ (16MB – 512MB) and, for work that requires more image recording capacity, Microdrive™ cards.

Dual shutter releases
Dual shutter release buttons make the FinePix S3 Pro equally comfortable to hold and operate in both horizontal and vertical orientations. Vertical shutter release button makes shooting vertical-format images, such as full-length portrait photography much easier, while horizontal shutter release button is for full-width landscape or other photography.



Dual LCD monitors
The 2.0-inch low temperature polysilicon TFT LCD monitor delivers crisp, clear images. Coverage is 100% of the frame, as is the viewfinder. The LCD monitor offers an especially effective histogram display, graphically showing luminosity or RGB color distribution among pixels. The camera also features a convenient backlit dot matrix LCD display, making it quick and easy to check or change camera settings.



Standard rechargeable battery power
Power is supplied by four standard AA-size rechargeable Ni-MH batteries. Typical life is approximately 400 shots on a single set of batteries.



Advanced imaging control for the working professional

HS-V2 software for a smoother digital workflow
The optional HS-V2 Ver.3.0 software package includes RAW File Converter EX and Camera Shooting software to give you full flexibility in both taking and managing images. RAW File Converter EX offers a number of advanced features, allowing you to specify parameters such as tonal curves, white balance, sharpness, saturation, and brightness during file conversion.



High-speed remote shooting from your PC

The Camera Shooting software allows you to control the FinePix S3 Pro remotely from your PC via its IEEE 1394 interface.
*This feature will be made available via a program update that will be uploaded to the Fujifilm website in February 2005.

