



KONICA MINOLTA

DIMAGE Z20

5.0
Megapixels

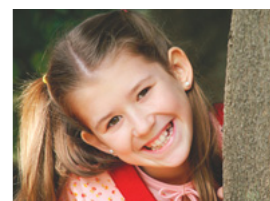
8x
Optical Zoom



8x



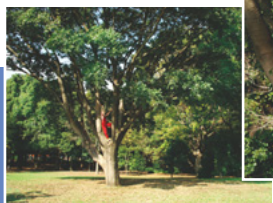
32x (4x Digital Zoom)



3x



1x



Speed, Power, and Mega Zoom so You're Always Ready for Action

- High-quality 5.0-megapixel images plus 8X optical Mega Zoom
- Ultra-fast startup: ready for shooting in 0.5 seconds
- Rapid AF (Auto Focus) with Predictive Focus Control
- Low power consumption: shoot up to 450 frames

 PictBridge

Shoot Wide, Crop Tight—Capture the Moment in Breathtaking Detail

DiMAGE Z20



Superb 5.0-megapixel image quality plus 8x optical Mega Zoom

DiMAGE Z20 delivers beautiful 5.0-megapixel quality images and features a powerful 8x optical zoom lens that covers a focal range of 36 mm – 290 mm (35mm equivalent). Want to get closer? 4x digital zoom boosts your range to an impressive 32x total zoom. What's more, an optional 26 mm wide-angle converter lens can widen the field of view to capture even more of the scene.



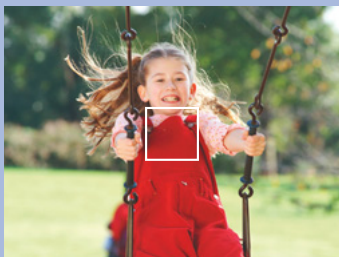
Power on—ready to shoot in just 0.5 seconds

Ready the instant it is turned on, DiMAGE Z20 powers up in 0.5 seconds—the fastest startup time in its class*.

*As of Dec. 1, 2004, 5.0-megapixel class DSC with built-in lens system, 8x zoom or greater.

Rapid AF (Auto Focus) and Predictive Focus Control for sharp action shots

DiMAGE Z20 features Konica Minolta's Rapid AF autofocus for ultra high-speed, superbly accurate focusing that takes just 0.3 seconds at wide angle or tele-photo. Plus Predictive Focus Control judges the motion of moving subjects to deliver sharper images.



Shoot up to 450 frames with four AA alkaline batteries

Energy-efficient design keeps power consumption low, allowing you to shoot up to 450 frames with four AA alkaline batteries*. Better still, these batteries are widely available so you can get replacements virtually anywhere.

*According to CIPA (Camera & Imaging Products Association) standards, using an SD memory card and four included AA alkaline batteries.

Movie recording with selectable 15 fps VGA and 30 fps QVGA modes

When you want to capture moments in motion, DiMAGE Z20 can record VGA movies at 15 fps, which makes a bigger picture on your PC monitor. You also have the choice of QVGA recording at a smooth 30 fps.

Stunning Macro shots from 1 cm / 0.4 in. away

Move in close—really close—with super Macro that takes you to 1 cm (0.4 in.) from the smallest of subjects. Capture incredibly detailed close-ups of flowers, small collectibles, and anything else that catches your eye.



◀ Super close at 1 cm / 0.4 in. away!

Optional Accessories

Availability depends on area.



Camera Case
CS-DG1000



Wide-angle Converter
ZCW-200



36 mm
without converter



26 mm with Wide-angle
ZCW-200 Converter

Note : Numerical values for time, length and weight in this catalog should be considered approximations.

MAIN SPECIFICATIONS

No. of effective pixels CCD	Approx. 5.0 million 1/2.5-type interline primary-color CCD with a total of approx. 5.2 million pixels
Lens Focusing range from front of the lens	6 – 48 mm (35mm equivalent: 36 – 290 mm), f/3.2 – f/3.4 Wide / Tele: 0.5 m (1.6 ft.) / 1.5 m (4.9 ft.) to infinity Macro: Wide: 0.01 m (0.03 ft.) – 1.0 m (3.3 ft.) Tele: 0.6 m (2.0 ft.) – 2.0 m (6.6 ft.)
Autofocus system	A combination of a passive AF sensor and a video AF system
Recording media	SD (Secure Digital) Memory Card / MultiMediaCard
Storage	Approx. 14.5 MB (internal storage)
File format	JPEG, Motion JPEG (MOV) without Audio, DCF2.0 compliant, DPOF (ver. 1.1), Exif 2.2
No. of recorded pixels	2560 x 1920, 2048 x 1536, 1600 x 1200, 640 x 480
Storage capacity Approx. No. of frames using 14.5 MB internal storage at 2560 x 1920	Fine: 6, Standard: 11, Economy: 22 Movie recording (15 fps, 320 x 240): approx. 43 seconds * The actual number of images may vary depending upon the subject and media used.
Interface	USB: Full-Speed 12 Mbps data transfer with a USB2.0 compatible computer
Dimensions (W x H x D)	Approx. 109 mm x 82 mm x 94 mm / 4.3 in. x 3.2 in. x 3.7 in.
Weight	Approx. 300 g / 10.6 oz. (without batteries and recording media)

■ The Konica Minolta logo and "The essentials of imaging" are trademarks or registered trademarks of Konica Minolta Holdings, Inc. ■ DiMAGE is a trademark or a registered trademark of Konica Minolta Photo Imaging, Inc. ■ Windows is a registered trademark of Microsoft Corporation in the United States and other countries. ■ Macintosh and Mac are trademarks of Apple Computer, Inc., registered in the U.S. and other countries. ■ All other brand and product names are trademarks or registered trademarks of their respective owners.

Konica Minolta Photo Imaging, Inc. Shinjuku Nomura Bldg., 1-26-2 Nishishinjuku, Shinjuku-ku, Tokyo, 163-0512 Japan

Standard Accessories

Battery (four AA alkaline batteries), Neck Strap (NS-DG800), Video Cable (VC-400), USB Cable (USB-3), Lens Cap (LF-243B), DiMAGE Viewer CD-ROM

Supported Operating Systems

Windows 98*, Windows 98 Second Edition*, Windows Me, Windows 2000 Professional, Windows XP (Home / Professional), Mac OS 9.0–9.2.2, Mac OS X v.10.1.3–10.1.5, v.10.2.1–10.2.8, v.10.3–10.3.6

*Users with Windows 98 and Windows 98 Second Edition operating systems must install dedicated driver software included in the DiMAGE Viewer CD-ROM.

● Specifications and accessories are based on the information available at the time of printing, and are subject to change without notice. For the latest information, please visit: <http://konicaminolta.com/dimage> ● Depending on the condition of the battery and rechargeable flash, startup time may be slightly longer and some operations may not function. ● The LCD monitor is manufactured using high-precision technology. The appearance of any missing pixels or lit pixels does not indicate damage to the monitor. ● Images (except for product photos) are simulated for design purposes.

Konica Minolta Inkjet Paper

Bringing you perfect photo-quality prints for all digital images captured with Konica Minolta digital cameras

* Package design may not look the same for all regions.



This brochure is printed with soy ink to help preserve the environment.