

OLYMPUS

Your Vision, Our Future

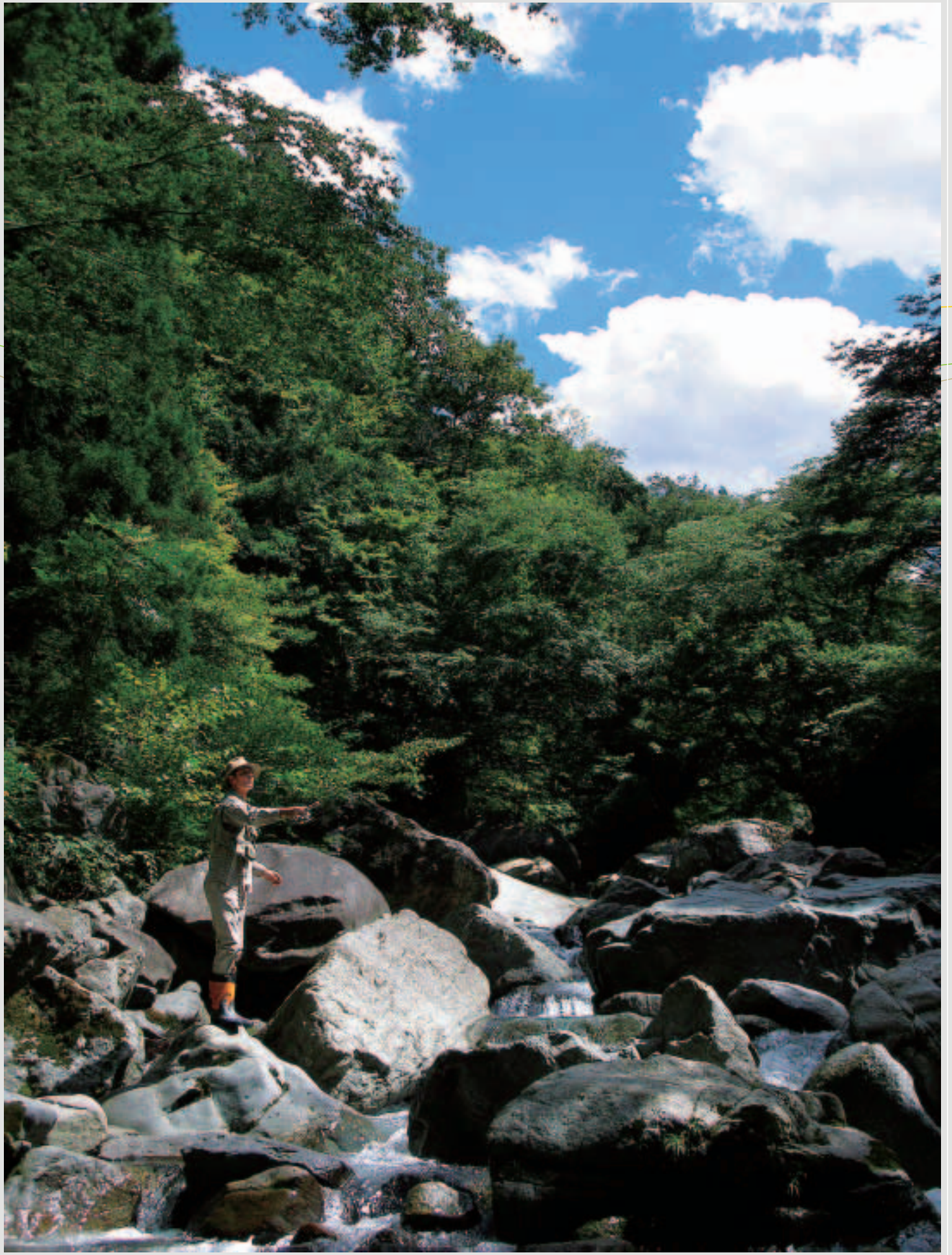
Digital Camera

C-70 ZOOM

NEW

Compact Digital. Packed with Possibilities.







Spend Precious Time with a Camera of Distinction

Satisfaction is guaranteed with the astonishing image quality of a 7.1-megapixel CCD and a high-precision 5X zoom.

Enjoy its superior performance and immediate response, which synchronize at your will.

Feel the confidence of a superior design, providing you with the smoothest handling.

For precious time – The C-70 ZOOM digital camera.



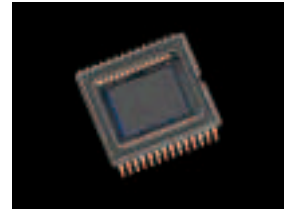


Outstanding Image Quality – for Truly Enjoyable Photography



Massive 7.1-megapixel Imaging Power in a Compact Body

Incorporating a 1/1.8-inch primary-colour CCD with 7.1 effective megapixels, the compact, high-grade C-70 ZOOM digital camera produces image quality that is quite simply incomparable. Images are bright, vivid, and powerful, yet surprisingly subtle, delicate, and nuanced. The ultra-high resolution allows you to print out large, clear, absolutely gorgeous pictures, or trim the picture to create a perfect image. Images can be recorded in RAW, TIFF, or JPEG format.



1/1.8-inch, 7.1-megapixel CCD

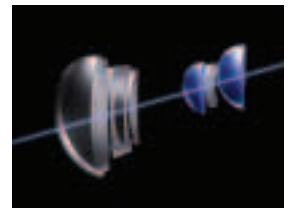
TruePic TURBO Image Processor Supports Image Beauty

An Olympus original, the advanced image processor ensures realistic colour reproduction and smooth gradations under any lighting condition, while maximising clarity by optimising sharpness and minimising noise. It also reduces image processing time in order to ensure fast camera response – a feature that's crucial to any photographer who wants to capture life moment by moment.



Superior-quality 5X Optical Zoom

Designed to maximise the performance of the 7.1-megapixel CCD, the 1:2.8 – 4.8, 38 – 190 mm*, 5X optical zoom boasts superior resolution and incorporates two aspherical lens elements to minimise spherical and chromatic aberration and provide extra clarity and higher contrast. The result is dramatic, super-sharp images with beautifully precise colour. For even more zoom power, use the optical zoom in conjunction with the 6X digital zoom**, enabling telephoto shooting at up to 1140mm* effective equivalent. In addition, superior macro-shooting capability lets you shoot as close to the subject as 8cm in Macro mode, or even 2cm in Super Macro mode. This allows incredible close-ups of flowers, insects, etc.



Lens configuration
■ Aspherical lens

* Equivalent focal length on a 35mm camera format

** Images may be grainy when using the digital zoom.



7.9mm (38mm)



14.1mm (68mm)



39.5mm (190mm)



39.5mm with 6X digital zoom (1140mm)
(): 35mm camera equivalent



Super Macro mode





Quick Handling, with Reliable Focus and Exposure Control



Precise Focusing Includes AF Target Shift

The TTL contrast detection system autofocus allows quick, accurate focusing – even in the dark, thanks to the AF illuminator. Easy-to-set autofocus modes with simple button operation include iESP (intelligent Electro-Selective Pattern), Spot, and Target Shift, which lets you move the AF target mark from the centre of the screen to what you want to focus on from among 143 points, without changing the framing. Fulltime autofocus, which follows the subject to keep it in focus continuously, and manual focus are also available.



AF Target Shift

Versatile Light Metering Systems

Three different metering systems are available. You can choose the one you want quickly using the AE/AF button. AE lock can be engaged by pressing the AEL button, conveniently located within easy reach of your right thumb.

Digital ESP (Electro-Selective Pattern): Employs a selective multi-zone metering system to ensure optimal exposure, even in difficult lighting conditions.

Spot: Measures only the area within the narrow light-metering target mark.

Multi: Measures the brightness of the subject at up to eight different points to set the optimal exposure based on the average brightness.

Exposure Compensation & Auto Bracketing

Exposure compensation – something you’re likely to use frequently – can be set quickly by pressing the right (to plus) and left (to minus) Arrow buttons. ± 2 EV compensation in 1/3 EV steps is possible.

With auto exposure bracketing*, images can be taken sequentially with 3 or 5 different exposures in 1/3 EV steps within ± 2 EV.

* Not available in TIFF and RAW recording formats.



Without compensation



With compensation (-1 1/3 EV)

Histogram & Overexposed/Underexposed Area Display

A histogram that shows the luminance distribution of an image with a graphic chart gives you more precise exposure control.

The Overexposed/Underexposed Area Display colours overexposed areas with red and underexposed areas with blue.



Overexposed/Underexposed Area Display



Shooting Flexibility Gives You the Freedom to Explore Your Potential

A Variety of Shooting Modes

Just rotate the mode dial for quick access to a variety of shooting modes, including P/A/S/M Exposure, Scene Programme, My Mode, and Motion JPEG.

P/A/S/M Exposure: Programme Auto, Aperture Priority Auto, Shutter Priority Auto, and Manual let you choose how exposure is controlled. Apertures of 1:2.8–8 and shutter speeds of 15 seconds to 1/2,000 of a second can be set quickly using the Arrow buttons*.

* The range of apertures and shutter speeds varies depending on shooting modes.

Scene Programme: Portrait, Sports, Landscape Portrait, Landscape, and Night Scene modes customised for each scene make it easy to get great results.

My Mode: You can create up to four personal combinations of settings for quicker shooting the way you like.

Motion JPEG: Enables you to record movies with sound in clear VGA (640 x 480 pixels) at a smooth 30 frames per second.



Programme Auto



Aperture Priority Auto (1:4.8)



Shutter Priority Auto (1/15 sec.)



Manual (1:5.6, 1/800 sec.)

Interval Shooting

You can set a 1 – 60 minute interval (1 minute increments) to let the camera automatically shoot 2 – 99 pictures continuously. Enjoy fixed-point observation such as blooming flowers.

Auto & Manual Sensitivity Settings

Sensitivity can be set to Auto and to ISO settings of approximately 80, 100, 200, or 400. This gives you more shooting flexibility and enhances creative possibilities.

Multiple White Balance Settings

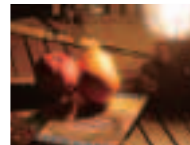
Auto, Preset, and One-touch white balance settings are available. You can also make fine adjustments between –7 (red) and +7 (blue).

iESP (intelligent Electro-Selective Pattern) II Auto:

Faithfully reproduces colours even under complex light sources, with skin tones that come out looking beautiful and natural.

Preset: Lets you set the white balance for daylight, overcast, sunset, tungsten, or three types of fluorescent light.

One-touch: Lets you create even more precise white balance by pointing the camera at a nearby white object.



With adjustment (-7 Red)



Without adjustment



With adjustment (+7 Blue)

High-performance, Built-in Flash

The Intelligent Variable-Power Flash is built in and includes Auto, Red-eye Reduction, Fill-in, Off, 1st/2nd Curtain Slow Synchronisation, and Slow Synchronisation + Red-eye Reduction.

The flash mode changes one after another when the flash mode button is pressed repeatedly.



1st Curtain Slow Synchronisation





Digital Functions that Provide Comprehensive Capabilities



Big 5.1cm / 2.01", Sunshine LCD Monitor

The 5.1cm / 2.01", 206,000-pixel-resolution monitor's big, precision display makes shooting and viewing pictures easy and comfortable. In addition, thanks to the semi-transmissive LCD, the monitor provides a clear view, even in bright outdoor conditions.

Useful Editing Functions

Resizing reduces the image size to 640 x 480 or 320 x 240 pixels for convenient use on the Internet. Trimming crops part of the picture for better composition. And brand-new Red-eye Fix lets you restore flash-induced red eyes to their natural colour right on the camera – no need for a computer.

PictBridge Direct Printing

The camera is compatible with PictBridge, so you can print out your images directly without using a computer simply by connecting the camera to a PictBridge-enabled printer with the included USB cable.



Easy Connections to Computer and TV

Even large amounts of image data can be transferred from the camera to your computer in moments with the included USB cable.

An AV cable is also included for image and sound playback on a TV monitor.

Panorama Picture with Olympus xD-Picture Card

You can turn pictures taken with the Olympus xD-Picture Card into a panorama picture on your computer using the OLYMPUS Master software provided with the camera. Enjoy wide-angle pictures.



Panorama picture

OLYMPUS Master Software Included

This camera also comes with OLYMPUS Master, image management and processing software that lets you browse, organise, and edit images on your computer. A convenient Calendar View function makes it easy to sort pictures by shooting date, and the friendly user interface helps you to process RAW format images, create photo albums, postcards, and more. Multiple print settings are also available. For more demanding users, the optional OLYMPUS Master Plus software is available.

Required Personal Computer Environment
OS: Windows 98SE/Me/2000 Professional/XP,
Mac OS 10.2 or later
Interface: USB port



Calendar View screen

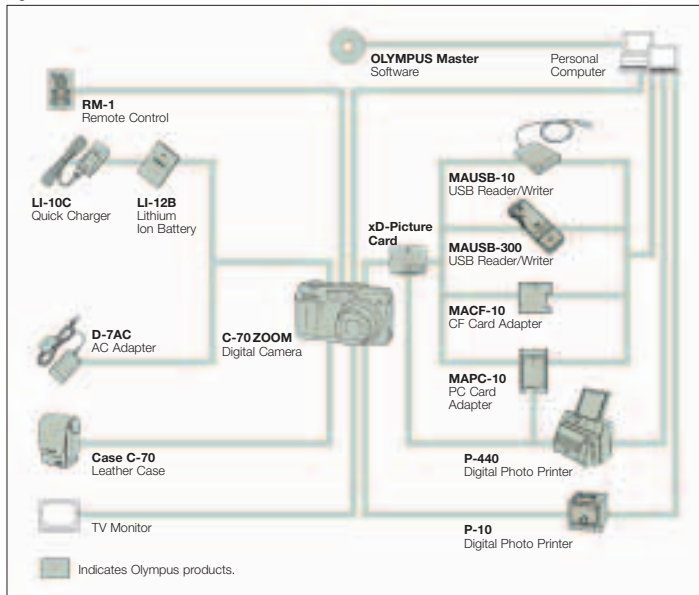
Editing screen

Printing screen

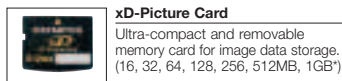
All the sample shots in this catalogue were taken with the C-70 ZOOM.



System Chart



Optional Accessories



xD-Picture Card

Ultra-compact and removable memory card for image data storage. (16, 32, 64, 128, 256, 512MB, 1GB*)



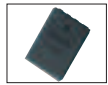
MAUSB-300 USB Reader/Writer

For high-speed data transfer from an xD-Picture Card to a PC/Macintosh with USB 2.0 interface.



MAPC-10 PC Card Adapter

For easy and fast data transfer from an xD-Picture Card/SmartMedia card to a PC/Macintosh with a PC card slot.



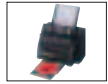
LI-12B Lithium Ion Battery

Rechargeable lithium ion battery.



RM-1 Remote Control

For using a variety of functions from a distance.



P-440 Digital Photo Printer

High image quality, high-speed printer capable of up to A4-size prints. Dye-sublimation printing.



MAUSB-10 USB Reader/Writer

For easy and fast data transfer from an xD-Picture Card/SmartMedia card to a PC/Macintosh with a USB port.



MACF-10 CF Card Adapter

For using an xD-Picture Card with digital cameras or computers with a CF card slot



D-7AC AC Adapter

For extended use of the camera.



LI-10C Quick Charger

Battery charger for LI-12B/LI-10B Lithium Ion Battery.



Case C-70 Leather Case

Durable camera case to protect the camera from damage.



P-10 Digital Photo Printer

PictBridge-compatible printer for direct printing without a computer. Dye-sublimation printing.

* available in early 2005.

C-70 ZOOM Digital Camera Specifications

| | |
|--|--|
| Recording system | Still image: RAW, TIFF, JPEG with DCF (Design rule for Camera File system). Exif 2.21, PRINT Image Matching II, DPOF (Digital Print Order Format) support. Motion JPEG image: QuickTime Motion JPEG support Audio: WAVE format support |
| Memory | xD-Picture Card (16, 32, 64, 128, 256, 512MB, 1GB*) |
| No. of effective pixels | 7.1 megapixels |
| Image pickup element | 1/1.8-inch CCD solid-state image pickup device, total 7.4 megapixels |
| Recording image sizes & approx. no. of storable frames (When using a 32MB xD-Picture Card) | 3072 x 2304 pixels – RAW: 3, TIFF: 1, SHQ: 6, HQ: 18 3072 x 2048 pixels (3:2) – SHQ: 6, HQ: 20 2592 x 1944 pixels – SQ1 (High): 8, SQ1 (Normal): 25 2288 x 1712 pixels – SQ1 (High): 11, SQ1 (Normal): 32 RAW: non-processed TIFF: non-compressed SHQ: Super High Quality HQ: High Quality SQ1: Standard Quality-1 SQ2: Standard Quality-2 |
| Lens | Olympus lens 7.9 – 39.5mm, 1:2.8 – 4.8, 9 elements in 7 groups (equivalent to 38 – 190mm on a 35mm camera) |
| Optical zoom | 1 – 5X (up to 30X with 6X digital zoom)*1 |
| Focusing | TTL contrast detection system iESP/Spot autofocus: Normal mode: 60cm – ∞ (Wide), 1.2m – ∞ (Tele) Macro mode: 8 – 60cm (Wide), 60cm – 1.2m (Tele) Super Macro mode: up to 2cm (focal length fixed) Manual focus: 8cm – ∞ Fulltime autofocus possible, AF target area shift possible, AF illuminator available |
| Sensitivity | Auto, and settings equivalent to approx. ISO 80, 100, 200, 400 |
| Photometric system | Digital ESP light metering, Spot light metering, Multi light metering |
| Exposure control | Programme Auto, Aperture Priority Auto, Shutter Priority Auto exposure modes Aperture Priority Auto: 1:2.8 – 8 (Wide), 1:4.8 – 8 (Tele) Shutter Priority Auto: 4 – 1/2,000 sec. (used with mechanical shutter) Manual exposure mode: 1:2.8 – 8 (Wide), 1:4.8 – 8 (Tele), 15 – 1/2,000 sec AE lock: available except with Manual exposure mode Compensation: within ±2 EV in 1/3 EV steps Auto bracketing: 3 or 5 frames within ±2 EV in 1/3, 2/3, 1 EV steps Histogram available, Overexposed/Underexposed Area Display available |
| White balance | iESP II full auto TTL, One-touch, Preset (daylight, overcast, tungsten, 3 types of fluorescent light) Compensation: 15 levels |
| Sequence Mode | High speed: up to 2 pictures at 2.2 frames per sec. in HQ mode Normal speed: up to 12 pictures at 1.5 frames per sec. in HQ mode Interval shooting available |
| Shooting mode | Programme Auto, Aperture Priority Auto, Shutter Priority Auto, Manual, Scene Programme (Portrait, Sports, Landscape with Portrait, Landscape, Night Scene), My Mode, Motion JPEG |
| Motion JPEG image recording (When using 32MB xD-Picture Card) | 640 x 480 pixels (SHQ): approx. 21 sec. with sound, 21 sec. w/o sound 640 x 480 pixels (HQ): approx. 41 sec. with sound, 42 sec. w/o sound 320 x 240 pixels (SQ1): approx. 56 sec. with sound, 57 sec. w/o sound 320 x 240 pixels (SQ2): approx. 111 sec. with sound, 115 sec. w/o sound |
| Image adjustment | Sharpness ±5, Contrast ±5, Saturation ±5 |
| Special functions | Black & White and Sepia effects, Panorama shooting*, Grid Lines Display function |
| Image editing | Resizing, Trimming, Red-eye Fix |
| Viewfinder | Optical real-image viewfinder |
| LCD monitor | 5.1cm / 2.01" semi-transmissive TFT colour Sunshine LCD, approx. 206,000 pixels |
| Still image playback | Single Frame, Index (4, 9, 16 frames), Slideshow, Close-up (up to 5X), Rotation, Calendar, Histogram, sound playback possible |
| Motion JPEG image playback | Normal, Frame By Frame, Fast Forward, sound playback possible |
| Flash working range | Wide: Approx. 0.15 – 3.8m / Tele: Approx. 0.6 – 2.2m |
| Flash modes | Auto (automatic flash activation in low light and backlight), Red-eye Reduction, Off (no flash), Fill-in (forced activation), 1st/2nd Curtain Slow Synchronisation, 1st Curtain Slow Synchronisation + Red-eye Reduction |
| Selftimer | Electronic selftimer with 12 sec. delay |
| Calendar system | Up to 2099, recorded with picture data simultaneously |
| PictBridge | Compatible |
| External connectors | DC-IN jack, Multi-connector: USB connector and AV output connector |
| Power supply | Exclusive lithium ion battery, optional AC adapter |
| Dimensions | 102 (W) x 59 (H) x 42.5 (D) mm (excluding protruding parts) |
| Weight | 220g (without batteries/card) |

*1 Using a tripod is recommended during super-telephoto shooting.

*2 Panorama is available with an Olympus version of the xD-Picture Card and OLYMPUS Master software.

- QuickTime is a trademark of Apple Computer, Inc.
- All other company and product names are registered trademarks and/or trademarks of their respective owners.
- The pictures in this catalogue of the LCD and PC monitors and the print sample are simulated.
- Specifications and appearances are subject to change without any notice or obligation on the part of the manufacturer.

Pictures in this catalogue were taken at Fish-on Shishidome.