

**Nikon**

**COOLPIX  
4500**

DIGITAL CAMERA



Swivel Magic

**4x**  
Zoom-Nikkor Lens

**4.0**  
Effective Megapixels

**5-Area**  
Multi Autofocus

Unique **Swivel**  
Design

**16** Versatile  
Scene Modes

[www.nikon-coolpix.com](http://www.nikon-coolpix.com)



The swivel design gives you a firmer grip, especially at waist-level position — a vital feature when you need to minimise camera shake in low-light conditions.

The swivel design makes it easy to take low-angle shots, and capture that once-in-a-lifetime expression.

The COOLPIX 4500 dramatically expands your shooting perspective, enabling bold, dynamic compositions.

Enhance the perspective of the wideangle lens with high-angle shooting. The COOLPIX 4500's swivel design allows you to concentrate on picture composition.



Actual size

Never before has a camera offered such a **radically exciting swivel design**. Never before has a digital camera delivered this kind of **aim-and-shoot versatility**. Slim, stylish, it moves the way you do, enabling you to **shoot at any angle** — high, low or straight from the hip. The **high-performance 4x Zoom-Nikkor lens** dramatically extends your reach, and a **4x digital zoom** brings your images even closer. With **4.0 million effective pixels**, the COOLPIX 4500 gives you crisp large-format prints in remarkably fine detail — and Nikon's **unique image processing algorithm** renders them in

true-to-life colour. The **16 Scene Modes** for specific settings make it easy to capture the essence of each and every picture, and the **auto pop-up flash** ensures balanced lighting. What's more, the COOLPIX 4500 accepts the **growing array of COOLPIX 900 series accessories** — including Slide Copy Adaptor, Remote Cord and Wideangle, Telephoto and Fisheye converters — so you can continue developing your digital photography skill, or use it as a serious business tool. What are you waiting for? Discover the magic of the COOLPIX 4500 today.



# An exciting new angle on fine photography

## High-resolution, high-performance Zoom-Nikkor



◆ **Superior Optical Performance** — The COOLPIX 4500 lens features 10 elements in 8 groups and incorporates two aspherical lens elements that not only maximise optical performance throughout the entire zoom range — minimising lens aberration, even at the widest aperture — but also enable a more compact body design. Incorporated in the lens is a seven-blade rounded iris diaphragm that gives you precise control over aperture settings. And an amazing macro shooting feature lets you get as close as 2cm from your subject.

◆ **4x Optical plus 4x Digital Zoom** — The COOLPIX 4500 employs a high-performance 4x Zoom-Nikkor lens with 7.85-32mm coverage (equivalent to 38-155mm in 35mm format), dramatically extending your photographic reach. And a 4x digital zoom brings your captured images even closer.



## High-definition images with strikingly lifelike colour



### Auto Pop-up Speedlight

When available light is insufficient, the Auto pop-up Speedlight emerges automatically to provide supplementary illumination, ensuring bright, colourful pictures with negligible red-eye effect.



Auto



Slow Sync

Command dial  
Function button  
Mode button  
Power switch

Rugged magnesium (Mg) alloy camera body



### 4x optical zoom plus 4x digital zoom



▲Wide

▲Tele

▲4x digital zoom

Play button



### Quick Review

Quick Review lets you view any previously captured images in quarter-screen size.

Microphone

### Voice Memo Function

Images can be annotated with a brief voice memo to help manage your growing collection of images.

Monitor button

Flash mode button

Sync terminal

Optical viewfinder with dioptre adjustment



Focus mode button

Menu button

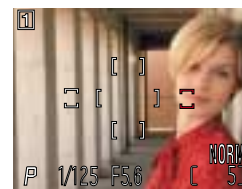
Zoom buttons

USB connector

LCD monitor

Speaker

Multi selector



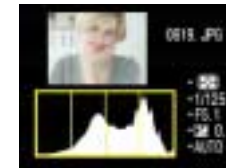
### Focus Area Selection

The handy Multi selector allows you to target any of five focus areas in the frame for easy and precise compositions.



### Thumbnail playback

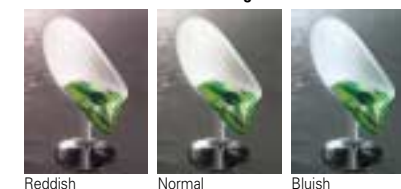
Multiple-frame playback in 4- or 9-image frames makes review of your images fast and efficient.



### Histogram Indication

For full confidence in the exposure setting, each image can be checked for highlights and lowlights immediately after shooting.

### Auto White Balance Bracketing

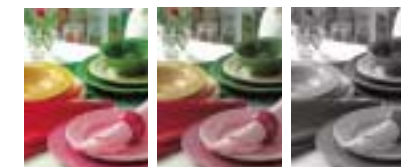


Reddish

Normal

Bluish

### Saturation Control



High

Low

Monochrome

(ideal for direct printing)

(ideal for creative photography)

## In-camera image enhancement



Noise Reduction ON

◆ **TTL White Balance** — Matrix auto white balance automatically measures the white balance in a scene. Or choose from five manual settings — Daylight, Incandescent, Fluorescent, Cloudy, and Speedlight — for more creative image control. Auto white balance bracketing captures images at three different white balance settings (reddish, selected value, and bluish) all with a single release of the shutter.

◆ **Saturation Control** — Colour saturation adjustment allows you to control image saturation in five steps, or select Black & White or Sepia mode. High-saturation images reproduce boldly for home printing, while lower-saturation images are ideal for postproduction and manipulation on your computer.

◆ **Noise Reduction Mode** — This feature — automatically activated when you use a slow shutter — employs a multiple exposure technique to eliminate background noise buildup from the CCD and deliver extended time exposures with exceptional results.



## Creative control options

# The secret behind those amazing images

◆ **4.0 Effective Megapixels** — The COOLPIX 4500, with its newly developed 1/1.8-in. CCD, boasts 4.0 million effective pixels to give you pictures of impressive quality. Beautiful ultrahigh-definition 2,272 x 1,704-pixel images put large-format printing within easy reach, and enable you to digitally enlarge and crop your pictures while retaining remarkably fine detail.

◆ **Nikon's Unrivaled Image Processing Technology** — Nikon has made spectacular advances in the field of digital imaging with cutting-edge research into white balance, image processing, scene analysis and composition, and other vital areas. Our superior algorithms, the all-important image processing systems within the camera, form the unique difference that makes Nikon images stand out from the rest. The COOLPIX 4500 has refined this ability to express colours faithful to the original — from delicate, subtle skin tones and the vivid hues of nature, to high-contrast technical details and the fine gradation of landscapes — setting a decisive new standard in photography.

◆ **Five-Area Multi Autofocus** — The Five-Area Multi Autofocus features approximately 7,100 AF steps for extra-high-precision focusing. An extra-wide focus range ensures sharp pictures in diverse compositions. And when the situation demands, Manual focusing gives you ultimate control. In Macro mode, the COOLPIX 4500 allows you to get as close as 2cm from your subject. ◆ **Exposure Metering Modes** — The COOLPIX 4500 offers four exposure metering options, including Nikon's exclusive 256-segment Matrix Metering for optimal exposures even in difficult lighting conditions. Other choices include Centre-Weighted and Spot metering. Spot AF Area metering automatically delivers the optimal exposure for your selected focus area. ◆ **P, S, A, M Exposure Modes** — Choose from four exposure modes — Programmed Auto [P], Shutter-Priority Auto [S], Aperture-Priority Auto [A], or Manual [M] — for any situation imaginable. Exposure compensation allows you to manually shift the exposure value (EV) from -2 to +2 in 1/3 EV steps. And Auto Exposure Bracketing does it all for you, automatically.

## 16 Versatile Scene Modes

Sixteen programmed Scene Modes make it easy to capture optimal results in the most diverse shooting situations. With the COOLPIX 4500, anyone, even a novice photographer, can take great images simply by choosing the appropriate mode for the next picture.



**Portrait**  
Emphasises a subject with natural skin tones against a soft, pleasing background.



**Party/Indoor**  
Captures the details of dimly lit scenes. In low-light situations, the Speedlight fires automatically.



**Night Portrait**  
Fires the built-in Speedlight to illuminate the subject and keeps the shutter open long enough to capture the background.



**Close Up**  
Takes up-close pictures with an artistically blurred background.



**Multiple Exposure**  
Artistically combine two images on a single frame. A transparent first image helps you with composition when taking the second image.



**Dawn/Dusk**  
Catches the natural-light beauty of dim or hazy situations, such as just before sunrise or after sunset.



**Panorama Assist**  
Allows you to take several side-by-side images, all at the same exposure and white balance setting, then combine them later using the supplied photo editing software to create spectacular wide-vista photos.

**Back Light**  
Automatically fires the Speedlight to illuminate the shadows that cover a subject.

**Beach/Snow**  
Vividly captures the brightness of subjects such as snowy fields, beaches, or sunlit expanses of water.

**Landscape**  
Captures distant scenes with postcard-like sharpness and clarity.

**Sunset**  
Enables users to capture the natural beauty of sunsets.

**Night Landscape**  
Produces stunning night landscapes by employing slow shutter speeds.

**Fireworks Show**  
Instantly responds to the shutter release button to capture fireworks at the ideal moment.

**Museum\***  
Produces sharp, clear indoor pictures without triggering the flash.  
\*Note: In some museums and exhibitions, it is prohibited to take pictures, even without a flash. Be sure to obtain permission before taking pictures.

**Copy**  
Renders clear black and white reproductions of text or drawings from a whiteboard or printed matter.

**Sports**  
Uses a fast shutter speed to capture sharp, clear images that freeze the action.

## Scene Modes



Portrait



Party/Indoor



Night Portrait



Beach/Snow



Landscape



Sunset

## Response

Capture the images you've been looking for



Night Landscape



Museum



Fireworks Show



Close Up



Copy



Back Light



Sports



Panorama Assist



Dawn/Dusk



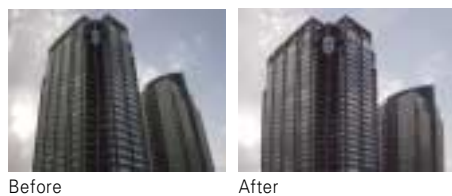
Multiple Exposure

## Easy data management

◆**Instant Image Transfer** — Connect your COOLPIX 4500 to a computer with the USB cable (supplied) to automatically launch the Nikon View 5 (for Windows & Macintosh) dedicated driver software. Then, simply choose the Transfer Function and your selected images will be uploaded automatically to your computer.

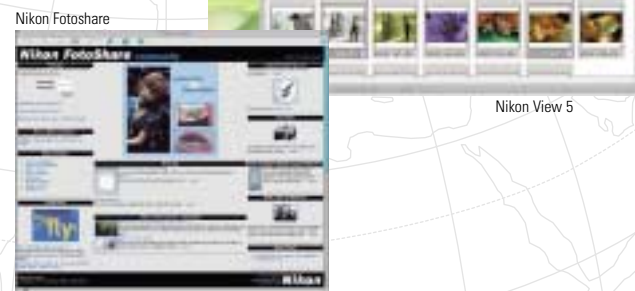


◆**Perspective Control** — With certain subjects, such as tall buildings, the perspective tends to be emphasised when shot from a low angle. After you have taken such an image, this feature allows you to de-emphasise or straighten the converging lines.



◆**Small Picture Function** — The Small Picture function creates a reduced-size copy (640 x 480, 320 x 240, 160 x 120, or 96 x 72 pixels) for quick and easy e-mailing to family and friends.

◆**Nikon View 5** — A convenient software package for creating and maintaining your own digital photo archive. Transferred images appear as thumbnails, making it easy to select and view individual photos. Programmed Slide Show enables you to create attractive presentations. And layout printing allows you to make large-size prints for framing, or multiple-print layouts for your own album. What's more, you can now upload your COOLPIX 4500 photos to Nikon Fotoshare\*, our premier online photo community, to start sharing your most exciting memories with family and friends. At Nikon Fotoshare, you can create online photo albums and order prints quickly and easily.



\*<http://www.nikon.co.uk/fotoshare>

\*Nikon Fotoshare may not be available in some regions.

## Converter Lenses

The COOLPIX 4500 is fully compatible with the growing line of COOLPIX 900 series converters. Wideangle and Fisheye converters broaden your perspective, providing a field of view that can put your subjects into the picture, or give near-infinite depth of field; the Telephoto converter extends the focal length to bring distant objects up close.



Fisheye Converter



Wideangle Converter



Telephoto Converter

## System

Only Nikon offers you a versatile system to address your digital photography needs.



The MC-EU1 remote cord (80cm) enables you to control zoom settings, interval shooting and playback, and to turn the LCD on or off. It also allows you to confirm information such as the exposure mode and number of frames to be captured.

Whether you use your COOLPIX 4500 for pleasure or business, Nikon offers accessories designed to meet your individual needs.



With MACRO COOL-LIGHT SL-1



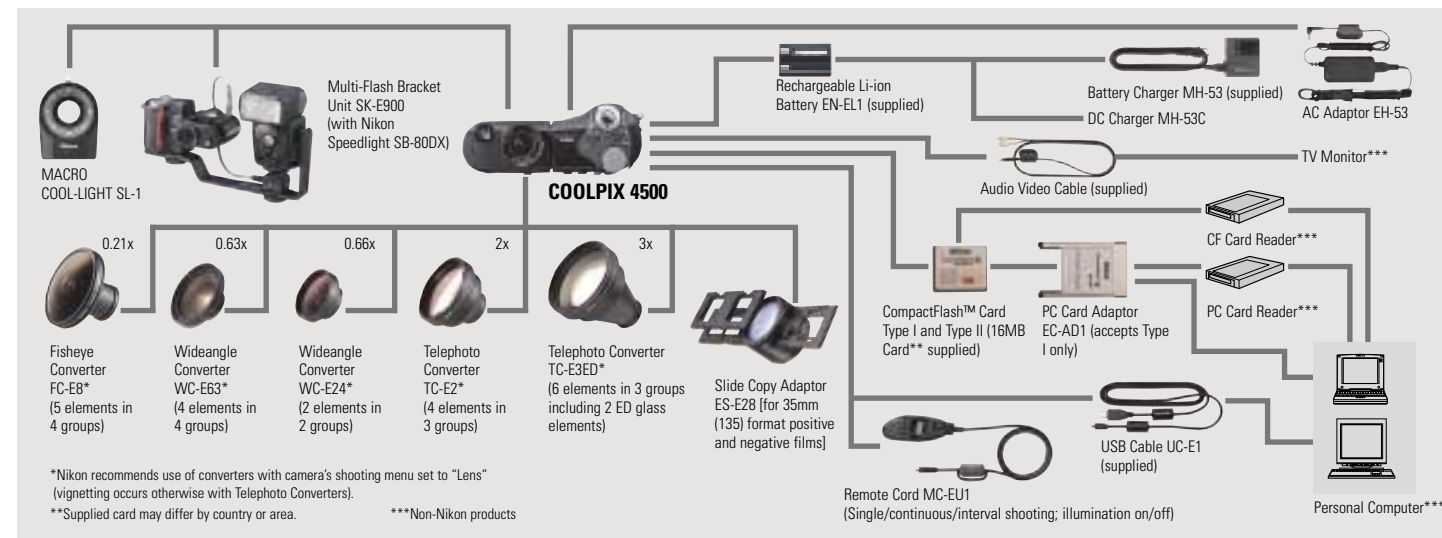
With built-in Speedlight

The new MACRO COOL-LIGHT SL-1 accessory enhances COOLPIX 4500 versatility by evenly illuminating near-field subjects for detailed Macro shots without obtrusive shadows.



## Remote cord

### Total COOLPIX System



## CompactFlash™ Cards



The COOLPIX 4500 accepts both CompactFlash™ Card Type I and II (includes 512MB/1GB IBM Microdrive™) storage options. CompactFlash™ Card Type I is compatible with the PC Card adaptor.

# Nikon Digital Camera COOLPIX 4500 Specifications

**Type of camera** Digital camera E4500  
**Effective pixels** 4.0 million  
**CCD** 1/1.8-inch type (4.13 million total pixels)  
**Image size** 2272 (2,272 x 1,704); 1600 (1,600 x 1,200); 1280 (1,280 x 960); 1024 (1,024 x 768); 640 (640 x 480); 3:2 (2,272 x 1,520) selectable  
**Lens** 4x Zoom-Nikkor; f=7.85 – 32mm [35mm (135) format equivalent to 38mm – 155mm] /F2.6 – 5.1 with macro; 10 elements in 8 groups  
**Digital zoom** Up to 4x  
**Autofocus** Contrast-detect TTL AF: 5-area Multi AF or Spot AF selectable  
**Focus modes** Single AF mode; Continuous AF mode also available  
**Manual Focus** (50 positions, focus confirmation image)  
**Focus range** 30cm to infinity (50cm at widest zoom setting), 2cm to infinity in Macro mode  
**Optical viewfinder** Real-image zoom viewfinder  
**Frame coverage:** approx. 80%; Dioptre adjustment: -2 ~ +2m<sup>-1</sup>  
**LCD monitor** 1.5-in., low-temp. polysilicon TFT (LED-BKL) 110,000-dot; brightness (5 levels) adjustment, Frame coverage: approx. 97%  
**Storage system** Exif 2.2 file (uncompressed TIFF-RGB or compressed JPEG)  
**Design rule for camera file system (DCF), Fine:** approx. 1/4; Normal: approx. 1/8; Basic: approx. 1/16; uncompressed mode TIFF-RGB  
**Quick Time Motion JPEG (Movie, Audio)**  
**Media** CompactFlash™ (CF) Card Type I and Type II (compatible with 512MB/1GB IBM Microdrive™)  
**No. of frames with 16MB CF Card (approx.)**

Image quality	Image size	2272	1600	1280	1024	640	3:2
HI		1	-	-	-	-	1
FINE		8	16	24	37	86	9
NORMAL		16	31	47	69	144	17
BASIC		32	59	86	121	229	34

**Shooting modes** AUTO, SCENE, P, S, A, M  
**Scene modes** Portrait, Party/Indoor, Night Portrait, Beach/Snow, Landscape, Sunset, Night Landscape, Museum, Fireworks Show, Close Up, Copy, Back Light, Sports, Panorama Assist, Dawn/Dusk and Multiple Exposure  
**Shooting menu options** Single, Continuous, Ultra-high-speed Continuous (approx. 30 fps for 70 QVGA-size images), Movie with audio (35 sec. for QVGA-size images at 15 fps), Multi-Shot 16 (5 fps; 16 frames in 1/16 size), Image Adjustment (Auto / Normal / More Contrast / Less Contrast / Lighten / Darken), Image sharpening (Auto/High/Normal/Low/Off), Saturation control, Self-timer  
**Exposure metering** 4-mode TTL metering: 1) 256-segment Matrix, 2) Centre-Weighted, 3) Spot, 4) AF Spot  
**Shutter** Mechanical and charge-coupled electronic shutter; 8 to 1/2,300 sec., and Bulb (up to 5 min.)  
**Aperture** 7-blade iris diaphragm; 10 steps in 1/3 EV increments  
**Exposure control** 1) Programmed Auto with Flexible Program [P], 2) Shutter-Priority Auto [S], 3) Aperture-Priority Auto [A], 4) Manual [M]; Exposure Compensation (±2 EV in 1/3 EV steps); Auto Exposure Bracketing EV -2.2 ~ +1.7 (W), EV -0.3 ~ +1.8 (T) (ISO 100 equivalent)  
**Exposure range** Auto or Manual (ISO 100, 200, 400, 800 equivalent); can be controlled in any exposure mode  
**Sensitivity (approx.)**  
**White balance** 1) Matrix Auto White Balance with TTL control, 2) 5-mode Manual with fine tuning (Daylight / Incandescent / Fluorescent / Cloudy / Speedlight), 3) Preset, 4) White Balance Bracketing

**Self-timer** 10 sec. or 3 sec. duration  
**Auto OFF mode** 1min.; can also be set manually (30 sec. 1/5/30 min.)  
**Built-in Speedlight** Auto pop-up type  
**Shooting range:** approx. 0.5 – 3.0m (W), approx. 0.5 – 1.6m (T)  
**Flash control:** Sensor flash system  
**Flash modes:** 1) Auto Flash, 2) Anytime Flash, 3) Night Portrait (Slow Sync. Flash), 4) Red Eye Reduction with pre-Flash, 5) Flash Cancel  
**External Speedlight** Multi-flash sync terminal connects to external Nikon Speedlight SB-80DX/30/28DX/28/26/25/24/22s through the Multi-Flash Bracket Unit SK-E900; built-in Speedlight can be cancelled when using external Speedlight(s)  
**Playback menu options** 1) 1 frame, 2) Thumbnail (4/9 segments), 3) Slide show, 4) Enlarged playback (up to 6x); Histogram indication and highlight point display; Focus confirmation indication; Hide and protect attributes can be set to each image  
**Interface** USB 1.1 interface  
**I/O terminal** Power input; Audio/Video output (NTSC or PAL selectable); Digital terminal (USB 1.1/Remote Cord); Sync terminal for external Speedlight  
**Power requirements** One Rechargeable Li-ion Battery EN-EL1 (included), One 6V 2CR5/DL245 lithium battery (optional), AC adaptor EH-53 (optional)  
**Battery life** Approx. 100 min. (as measured at room temperature [20°C] under standard Nikon test conditions: monitor on, zoom adjusted with each shot, flash used in approx. one third of photographs, image quality set to NORMAL, image size 2,272 x 1,704)  
**Dimensions (W x H x D)** 130 x 73 x 50mm  
**Weight** Approx. 360g (without battery and storage media)  
**Accessories included\*** Lens cap, Neck strap, Audio Video cable, 16MB CompactFlash™ Card, USB cable UC-E1, Rechargeable Li-ion Battery EN-EL1, Battery Charger MH-53, Nikon View 5 (COOLPIX) CD-ROM

\*Standard accessories may differ by country or area

## Nikon View 5 System Requirements

Macintosh	Windows
<b>OS</b> Mac® OS 9.0 – 9.2 (only built-in USB ports supported), Mac® OS X (10.1.2 or later)	<b>OS</b> Windows® 98SE, Windows® Me, Windows® 2000 Professional, Windows® XP Home Edition, Windows® XP Professional pre-installed model
<b>Models</b> iMac™, iMac™ DV, Power Macintosh® G3 (Blue & White), Power Mac™ G4 or later; iBook™, PowerBook® G3 or later (only built-in USB ports supported)	<b>Models</b> Only models with built-in USB ports supported
<b>RAM</b> 64MB or more recommended	<b>CPU</b> Pentium® 300MHz or faster
<b>Hard disk</b> 25MB required for installation, with additional amount equivalent to twice the capacity of the camera memory card plus 10MB required when Nikon View 5 is running	<b>RAM</b> 64MB (128MB or more recommended)
<b>Display</b> 800 x 600 with thousands of colours (millions of colours recommended)	<b>Hard disk</b> 25MB required for installation, with additional amount equivalent to twice the capacity of the camera memory card plus 10MB required when Nikon View 5 is running
<b>Others</b> CD-ROM drive required for installation	<b>Display</b> 800 x 600 with High Colour (True Colour recommended)
	<b>Others</b> CD-ROM drive required for installation

## ALL-IN-ONE-PACKAGE

- Neck Strap
- 16MB CompactFlash™ Card
- USB Cable UC-E1
- Audio Video Cable
- Rechargeable Li-ion Battery EN-EL1
- Battery Charger MH-53
- Lens Cap
- Nikon View 5 (COOLPIX) CD-ROM

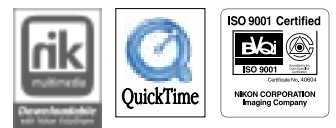


•Microsoft® and Windows® are either registered trademarks or trademarks of Microsoft Corporation in the United States and/or other countries. •Macintosh® and QuickTime® are either registered trademarks or trademarks of Apple Computer Inc. in the United States and/or other countries. •CompactFlash™ is a trademark of SanDisk Corporation. •Microdrive™ is a trademark of IBM. •Products and brand names are trademarks or registered trademarks of their respective companies.

Specifications and equipment are subject to change without any notice or obligation on the part of the manufacturer. August 2002.  
 © 2002 NIKON CORPORATION

**Exif Print** \*Exif Print™ is the industrial term for Exif 2.2, which is a newly established standard for Digital Still Camera Image File Format.

**WARNING** TO ENSURE CORRECT USAGE, READ MANUALS CAREFULLY BEFORE USING YOUR EQUIPMENT. SOME DOCUMENTATION IS SUPPLIED ON CD-ROM ONLY.



Nikon Fotoshare may not be available in some regions.

**Nikon** NIKON CORPORATION  
 FUJII BLDG., 2-3, MARUNOUCHI 3-CHOME, CHIYODA-KU, TOKYO 100-8331, JAPAN  
[www.nikon-image.com/eng/](http://www.nikon-image.com/eng/)