

Nikon Digital Camera COOLPIX 5200/4200 Specifications

Type:	Digital camera E5200/E4200
Effective pixels:	5.1 million (E5200)/4.0 million (E4200)
CCD:	1/1.8-in. primary color CCD (5.26 million total pixels) / E4200: 1/1.8-in. primary color CCD (4.13 million total pixels)
Image size:	E5200: 5M (2,592 x 1,944), 3M (2,048 x 1,536), 2M (1,600 x 1,200), PC (1,024 x 768), TV (640 x 480) / E4200: 4M (2,272 x 1,704), 3M (2,048 x 1,536), 2M (1,600 x 1,200), PC (1,024 x 768), TV (640 x 480)
Lens:	3x Zoom-Nikkor; f=7.8-23.4mm (35mm format equivalent to 38-114mm)/ f/2.8 - f/4.9; 7 elements in 6 groups (one ED lens and two aspherical lenses); Digital zoom: up to 4x
Autofocus:	Contrast-detect TTL AF
Focus range:	Approx. 30cm (11.8") - ∞; approx. 4cm (1.6") - ∞ at wide zoom position in macro close up mode
Focus area:	Auto (5-area automatic focus selection), Manual (99-area manual focus selection), Center-focus area selection available
LCD monitor:	1.5-in.; 110,000-dot low-temp. polysilicon TFT transfective LCD with brightness adjustment; Advanced brightness control LCD
Storage media:	Internal memory: approx. 12MB, SD memory card
Shooting modes:	Auto, Scene Assistance (Portrait, Landscape, Sports, Night portrait), Scene (Party/Indoor, Beach/Snow, Sunset, Dusk/Dawn, Night landscape, Close up, Museum, Fireworks show, Copy, Back light, Panorama assist), BSS (Best Shot Selector), Image adjustment, Image sharpening, Saturation control, Auto exposure bracketing, White Balance (Auto, Preset and 7 manual modes), WB bracketing, Digital zoom (Max. 4x), Noise reduction, Self-timer (3 sec., 10 sec.)
Movie:	E5200: TV movie (640) at 30fps, Small size (320) at 30fps, Smaller size (160) at 30fps E4200: TV movie (640) at 15fps, Small size (320) at 15fps, Smaller size (160) at 15fps
Capture modes:	E5200: Single, Continuous (approx. 2.5fps), Multi-shot 16 (16 frames 1/16 in size), 5 shot buffer E4200: Single, Continuous (approx. 1.3fps), Multi-shot 16 (16 frames 1/16 in size), 5 shot buffer
Number of frames:	E5200 (5M) : (w / Internal Memory): Fine approx.4, Normal approx. 8, Basic approx.16 E4200 (4M) : (w / Internal Memory): Fine approx.5, Normal approx. 11, Basic approx.21
Exposure metering:	Matrix metering, Center-weighted metering, Spot metering
Shutter:	Mechanical and charge coupled electronic shutter
Shutter speed:	4-1/2,000 sec.
Aperture:	Electronically controlled preset aperture
Aperture range:	Two-step (f/2.8 and f/4.8 [wide])
Built-in Speedlight:	Range: 0.3-4.5m / 1-14.8ft. (w), 0.3-3.5m / 1-11.5ft (t); Flash modes: Auto, Red-eye Reduction Auto (Advanced Red-eye Reduction), Anytime Flash, Flash Cancel, and Slow sync.
Interface:	USB, Audio Video output (NTSC/PAL)
Power requirements:	One Rechargeable Li-ion Battery EN-EL5 (Supplied), AC adapter EH-62A (Optional)
Dimensions (WxHxD):	Approx. 88 x 60 x 36.5mm (3.5 x 2.3 x 1.4 in.)
Weight:	Approx. 155g (5.5 oz.) (Without battery and SD memory card)
Supplied accessories*:	Strap, USB cable, Audio Video cable, Li-ion rechargeable battery EN-EL5, Battery charger MH-61, Software CD-ROM, Quick start guide, and Instruction manual
Optional accessories:	AC Adapter EH-62A, Soft Case, Waterproof Case WP-CP2**, and SD memory card

* Supplied accessories may differ by country or area.
** Not available in some countries and areas

PictureProject System Requirements

Macintosh	OS: Mac® OS X (10.1.5 or later) RAM: 64MB or more recommended Hard disk: 60MB required for installation Display: 800 x 600 with 16-bit color (full color recommended) Others: CD-ROM drive required for installation
Windows	OS: Windows® 98SE, Windows® ME, Windows® 2000 Professional, Windows® XP Home Edition, Windows® XP Professional pre-installed models RAM: 64MB or more recommended Hard disk: 60MB required for installation Display: 800 x 600 with 16-bit color (full color recommended) Others: CD-ROM drive required for installation

Microsoft® and Windows® are either registered trademarks or trademarks of Microsoft Corporation in the United States and/or other countries. Macintosh® and QuickTime® are either registered trademarks or trademarks of Apple Computer Inc. in the United States and/or other countries. The FotoNation logo is a trademark. The SD logo is a trademark. PictBridge is a trademark. Products and brand names are trademarks or registered trademarks of their respective companies. Images on LCDs and monitors shown on this publication are simulated.

Specifications and equipment are subject to change without any notice or obligation on the part of the manufacturer.
February 2004 ©2004 NIKON CORPORATION











WARNING

TO ENSURE CORRECT USAGE, READ MANUALS CAREFULLY BEFORE USING YOUR EQUIPMENT. SOME DOCUMENTATION IS SUPPLIED ON CD-ROM ONLY.



At the heart of the image

DIGITAL CAMERA
COOLPIX
5200
4200



COOLPIX 5200
5.1 Effective Megapixels



COOLPIX 4200
4.0 Effective Megapixels



NIKON CORPORATION

Fuji Bldg., 2-3, Marunouchi 3-chome, Chiyoda-ku,
Tokyo 100-8331, Japan

<http://nikonimaging.com/>

En

Enhanced for real expression. Streamlined to suit your needs.

Nikon presents two exciting additions to the popular COOLPIX range. Through easy operation, they deliver satisfying results without complication. With a streamlined range of functions, it's simple to take shots anytime without having to wade through lists of options. Two attractive aluminum-cased cameras with designs as attractive as the results they produce, the COOLPIX 5200/4200 bring effortless enjoyment and new excitement to the digital photography experience.



5.1 (COOLPIX 5200) / 4.0 (COOLPIX 4200) effective megapixel performance

Optical 3X Zoom-Nikkor ED lens

15 convenient Scene modes; 4 featuring Scene Assistance

Full-size movie capability with high-quality sound

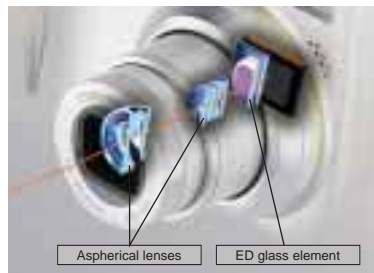
Advanced Red-eye Reduction for automatic in-camera image correction



Nikon ingenuity adds impact and clarity

Truly expressive imaging ability

The COOLPIX 5200/4200 achieve shots of superior quality. That's because they deliver the clarity of 5.1 and 4.0 effective megapixels, the freedom of a powerful 3X Zoom-Nikkor ED lens, and the advantage of a D-SLR-based image processor. Such factors mean shots remain stunning even when enlarged to A4 size, while an innovative lens design keeps overall dimensions compact throughout the zooming range.

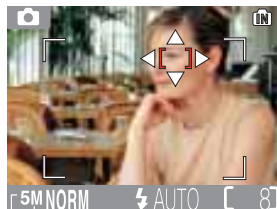


Swift, precise Multi-area AF

Multi-area AF enables sharp focus regardless of the subject. Manual Area focus enables the selection of an area anywhere in the frame, while Auto Area focus achieves optimal results with minimal effort.



Auto Area Focus mode



Manual Area Focus mode

White balance ensures consistent color quality

High-quality white balance maintains natural colors in different kinds of light. An Auto setting achieves optimal accuracy, 7 manual modes and preset capability deliver greater control, and White Balance Bracketing is also available – allowing three images with different white balance settings to be taken one after the other with just a single press of a button.



Approach each opportunity with easy operation



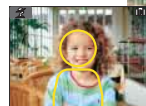
Close up



Night Landscape

Scene modes suited to frequent compositions

With a selection of 15 Scene Modes — four of which feature Scene Assistance — the COOLPIX 5200/4200 enable sharp, well-exposed shots to be achieved with ease in a wide range of common situations.



Portrait Assist



Portrait Assist ensures pleasing, well-composed shots of people

Designed for user friendliness

With smooth lines and with buttons located within easy reach, both cameras place a strong emphasis on user comfort. The cameras also feature an advanced GUI (Graphic User Interface), which is as easy to see as it is to operate.



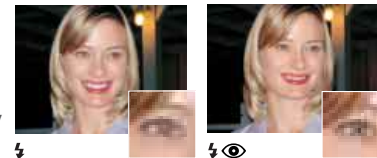
Handy Mode dial within easy reach



The user-friendly GUI enables smooth operation

Advanced Red-eye Reduction

Automatic in-camera correction is like having a darkroom built into the camera - removing annoying red eyes instantly and effectively without the need to use a PC.



Fast, stress-free operation

Powering up in minimal time, the COOLPIX 5200/4200 let you prepare for the shot as soon as the action begins. And with continuous shooting at a rapid 2.5fps* (approx.), movement can be captured in a more expressive manner.



* E5200 only (E4200: approx. 1.3fps)

Maximize your enjoyment with a range of exciting functions

Smooth movies with quality sound.

The COOLPIX 5200 even records smooth 30fps* video with sound, and it's easy to connect it to a TV too. Now you can sit back and enjoy watching recorded action with your friends and family.

* E5200 only (E4200: 15fps)



PictureProject for further fun

PictureProject is designed to be highly accessible for beginners and experienced users alike — making it simple to organize, edit and use images as you like.



PictureProject

Direct printing with PictBridge support

The COOLPIX 5200/4200 enable direct printing* from the camera straight to the printer.

*When connected to compatible printers.



Optional waterproof case

The dedicated Waterproof Case makes it easy to take pictures safely in the rain, or even while scuba diving to underwater depths of up to 40m.

