



At the heart of the image

DIGITAL CAMERA
COOLPIX
7900
5900

- 7.1 and 5.1 Effective Megapixel Performance
- 3x Optical Zoom-Nikkor ED Lens
- Large, Easy-to-view 2.0-inch LCD



COOLPIX 7900
7.1 Effective Megapixels



COOLPIX 5900
5.1 Effective Megapixels

The artistry of life.

Capture the artistry in everyday life with the new Nikon COOLPIX 7900/5900 digital cameras. Combining advanced technology with legendary Nikon optical performance and quality, these simple-to-use cameras make it easy to make the very most of the moment.



COOLPIX5900

A step ahead in compact clarity

The COOLPIX 7900/5900 take compact digital photography to new heights of performance. The 3x optical Zoom-Nikkor ED* lens (plus 4x digital zoom) enables versatile composition and optimal sharpness. 7.1 and 5.1 megapixel performance delivers incredible detail and clarity. What's more, they are also simple to operate and feature a large 2-inch LCD monitor that makes it easier to take and view images.



Small enough to carry almost anywhere, yet incorporating superior technology, the COOLPIX 7900/5900 prove that size is no measure of quality.

*Nikon's ED (Extra-low Dispersion) glass offers superior sharpness and optimal color correction.



Innovative features for more impressive images

Enhance exposure after the picture is taken, with D-Lighting

With Nikon's innovative new D-Lighting control, dark images can be rescued by improving the overall exposure of a scene in playback mode.



Without D-Lighting

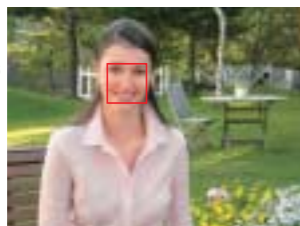


With D-Lighting

Face-priority AF* ensures pleasing portraits

Nikon's Face-priority AF (available in Portrait mode) automatically finds, then focuses on people's faces — making it so much easier to take satisfyingly sharp pictures of friends and family.

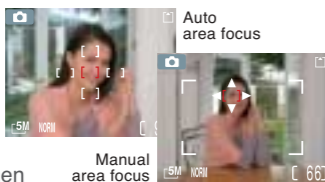
*Face recognition capability may be limited in some shooting conditions.



Face-priority AF

High-precision Multi-area Auto Focus

Multi-area Auto Focus ensures exceptional clarity, allowing you to locate the main subject almost anywhere in the frame (with a choice of 99 areas) and produce great results even when putting more than one subject in the picture.



Manual area focus

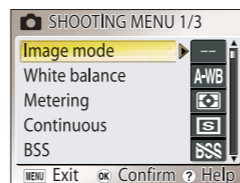
Auto area focus



Easy operation means less effort, more enjoyment

Select functions by name or icon — the choice is all yours

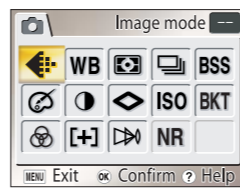
A new graphic user interface allows you to select functions by either name or icon, making it as simple as possible to take great pictures.



Select functions by name...



Need an explanation for a function on the menu? Just press the handy HELP button.



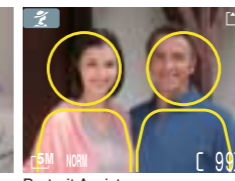
...or by icon.

16 convenient Scene Modes, 4 with Scene Assist

A range of Scene Modes provide sharp focus and optimal exposure when taking pictures of common subjects, while Scene Assist functions help to improve composition.



Close up



Portrait Assist



Sunset



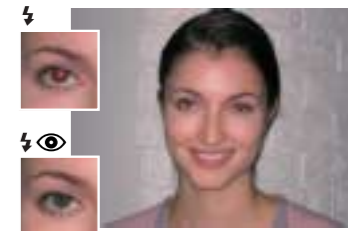
Underwater*



*For use only with Waterproof Case WP-CP4.

In-Camera Red-Eye Fix

Nikon's exclusive In-Camera Red-Eye Fix function automatically detects annoying red-eyes caused by flash, then corrects them instantly and effectively without the need to use a PC.



Further versatility extends enjoyment beyond shooting

Smooth movie performance with sound

The COOLPIX 7900/5900 can record VGA-size movies with sound at a smooth 30 frames per second. The length of your QuickTime movie is restricted only by the capacity of your SD memory card. It's also easy to connect the cameras to a TV for instant viewing with the supplied Audio Video cable.



PictureProject takes the fun further

Now even more versatile and user-friendly, PictureProject software (included) makes it easy to organize, edit and share images.



Direct printing with PictBridge

PictBridge compatibility enables direct printing to compatible printers, producing photos that remain stunning even when significantly enlarged.



Improved efficiency makes batteries last longer

The COOLPIX 7900/5900 are designed specially to take more pictures per battery (approx. 220/270 respectively with an EN-EL5), extending your enjoyment by reducing time spent recharging.

Nikon Digital Camera COOLPIX 7900/5900 Specifications

Type	Digital camera E7900/E5900
Effective pixels	7.1 million (E7900)/ 5.1 million (E5900)
CCD	1/1.8-inch type
Image modes	E7900: 7M (3072 x 2304), 5M (2592 x 1944), 3M (2048 x 1536), 2M (1600 x 1200), PC (1024 x 768), TV (640 x 480)/ E5900: 5M (2592 x 1944), 3M (2048 x 1536), 2M (1600 x 1200), PC (1024 x 768), TV (640 x 480)
Lens	3x Zoom-Nikkor ED; 7.8-23.4mm [35mm (135) format equivalent to 38-114mm]; f/2.8-4.9; 7 elements in 6 groups; Digital zoom: Up to 4x
Autofocus	Contrast-detect TTL AF
Focus range	Approx. 30cm (12 in.) to infinity (∞), 4cm (1.6 in.) to infinity (∞) in Macro Mode
Focus area	Auto (5-area automatic focus selection), Manual (99-area manual focus selection), Center-focus area selection available
LCD monitor	2.0-inch type, 115,000-dot Amorphous silicon TFT LCD monitor with brightness adjustment; frame coverage: approx. 100%
Storage media	SD memory card (optional), Internal memory equipped
Shooting modes	Auto, Scene Assist (Portrait, Landscape, Sports, Night portrait), Scene (Party/Indoor, Beach/Snow, Sunset, Dusk/Dawn, Night landscape, Close up, Museum, Fireworks show, Copy, Back light, Panorama assist, Underwater), BSS (Best Shot Selector), Image adjustment, Image sharpening, Saturation control, Auto exposure bracketing, White balance (Auto, Preset and 7 manual modes), WB bracketing, Digital zoom (Max. 4x), Noise reduction, Self-timer (3 sec., 10 sec.)
Movie	TV movie (640 x 480) at 15fps or 30fps, Small size (320 x 240) at 30fps, Smaller size (160 x 120) at 30fps. Electronic VR (Vibration Reduction) available (E7900 only)
Capture modes	1) Single, 2) Continuous (E7900: approx. 1.7fps/ E5900: approx. 2fps), 3) 5-shot buffer, 4) Multi-shot 16 (available only at 5M image size)
Number of frames	E7900 (7M): (w/ Internal memory): Fine approx. 4, Normal approx. 7, Basic approx. 15/ E5900 (5M): (w/ Internal memory): Fine approx. 5, Normal approx. 10, Basic approx. 21
Shutter speed	4-1/2000 sec.
Aperture range	Two-step (f/2.8 and f/4.9 [wide], f/8.2 and f/4.9 [telephoto])
Built-in Speedlight	Range: 0.3-4.5m/ 1-14.8 ft. (W), 0.3-3.5m/ 1-11.5 ft. (T); Flash modes: Auto, Red-eye Reduction Auto (In-Camera Red-Eye Fix), Anytime Flash, Flash Cancel, Slow sync.
Interface	USB, Audio Video output (NTSC/PAL)
Supported languages	German/English/Spanish/French/Italian/Dutch/Swedish/Japanese/Simplified Chinese/Traditional Chinese/Korean selectable in menu display
Power requirements	One Rechargeable Li-ion Battery EN-EL5 (Supplied), one CP1 lithium battery (Optional), AC adapter EH-62A (Optional)
Dimensions (WxHxD)	Approx. 88 x 60 x 36.5mm (3.5 x 2.4 x 1.4 in.)
Weight	Approx. 150g (5.3 oz.) (without battery and memory card)
Supplied Accessories*	Strap, USB cable, Audio Video cable, Rechargeable Li-ion Battery EN-EL5, Battery charger MH-61, PictureProject CD-ROM
Optional Accessories	AC adapter EH-62A, Soft case, Waterproof Case WP-CP4** and SD memory card

** Not available in some countries or areas.

PictureProject System Requirements

OS	Macintosh: Mac® OS X (10.1.5 or later)/ Windows: Windows® XP Home Edition/ Professional, Windows® 2000 Professional, Windows® Me, Windows® 98SE pre-installed models
RAM	64MB or more recommended
Hard disk	60MB required for installation
Display	800 x 600 or larger with 16-bit color (full color recommended)
Others	CD-ROM drive required for installation Only built-in USB ports are supported

Microsoft® and Windows® are either registered trademarks or trademarks of Microsoft Corporation in the United States and/or other countries. Macintosh® and QuickTime® are either registered trademarks or trademarks of Apple Computer Inc. in the United States and/or other countries. The FotoNation logo is a trademark. The SD Logo is a trademark. PictBridge is a trademark. D-Lighting technology is provided by Apical Limited. Products and brand names are trademarks or registered trademarks of their respective companies. Images on LCDs and monitors shown in this brochure are simulated.

Specifications and equipment are subject to change without any notice or obligation on the part of the manufacturer. January 2005 ©2005 NIKON CORPORATION



WARNING

TO ENSURE CORRECT USAGE, READ MANUALS CAREFULLY BEFORE USING YOUR EQUIPMENT. SOME DOCUMENTATION IS SUPPLIED ON CD-ROM ONLY.



NIKON CORPORATION

Fuji Bldg., 2-3, Marunouchi 3-chome, Chiyoda-ku,
Tokyo 100-8331, Japan

<http://nikonimaging.com/>

En