



At the heart of the image

DIGITAL CAMERA

COOLPIX

P1

P2



COOLPIX
P1

8.0
Megapixels

3.5x
ZOOM

2.5"
LCD



COOLPIX
P2

5.1
Megapixels

3.5x
ZOOM

2.5"
LCD

High performance with no strings attached

The latest entries to Nikon's COOLPIX lineup establish a new category of advanced photographic performance and enjoyment. 8.0 effective megapixels of sharp resolution ensures vivid pictures with plenty of detail. Advanced features, from Aperture-priority Auto Mode to new optimized Scene Modes and in-camera image correction, combine with the freedom of wireless image transfer to computers or compatible printers to introduce a whole new dimension that will be the hit of the party. The COOLPIX P1 and P2 make going unplugged more exciting than you ever imagined!



**COOLPIX
P1**



**COOLPIX
P2**



High performance
with no strings attached

Wi-Fi – WIRELESS LAN



Bringing built-in Wi-Fi LAN support (IEEE802.11b/g) to compact digital cameras for the first time, the COOLPIX P1 and P2 provide major new benefits by adding the outstanding flexibility of wireless shooting, image transfer, and direct printing to the enjoyment of taking great pictures with a quality Nikon digital camera.



COOLPIX
P1



COOLPIX
P2



Wireless image transfer



Individual pictures can be automatically transferred as you shoot, or you can transfer the photo data from an SD card or the camera's internal memory to one or more computers at your convenience.



Wireless to Computer



Wireless to Printer



Wireless Printer Adapter (optional)

Image quality that preserves the moment beautifully

The COOLPIX P1 and P2 are all about performance. The advanced hardware features at the heart are the new CCD image sensor, a high-quality Zoom-Nikkor lens, and the first implementation of Wi-Fi technology in a compact digital camera. Combined, this hardware also delivers the benefit of quick power-up and continuous shooting at a brisk 2.3* frames per second.

*For the COOLPIX P1, 2.5 frames per second for the COOLPIX P2



8.0 MEGAPIXELS

Both models are equipped with advanced CCD image sensors, which produce sharp and vivid pictures with high resolution, leave plenty of room for creative cropping, and make beautiful enlargements. Select from 8.0 megapixels for super-high resolution, or 5.1 megapixels for smaller file sizes.



3.5x ZOOM

The COOLPIX P1 and P2 are equipped with a high-quality 3.5x Zoom-Nikkor lens that provides a range from 36mm to 126mm*, and offers macro shooting from as close as 4cm from your subject.

* 35mm equivalent

8.0 MEGAPIXELS

Image quality that preserves the moment beautifully

The COOLPIX P1 and P2 are all about performance. The advanced hardware features at the heart are the new CCD image sensor, a high-quality Zoom-Nikkor lens, and the first implementation of Wi-Fi technology in a compact digital camera. Combined, this hardware also delivers the benefit of quick power-up and continuous shooting at a brisk 2.3* frames per second.

*For the COOLPIX P1, 2.5 frames per second for the COOLPIX P2



Technology that lets you control how light is best captured

When you want more than the fully automatic operation of Program and other modes, the COOLPIX P1 and P2 also offer Aperture-priority Auto Mode for greater manual control over the results. The large LCD on the back makes it easier to select functions, either by name or by icon. And, if you want a main menu selection explained, simply press the handy Help button.



APERTURE PRIORITY AUTO

Aperture-priority Auto Mode offers 10-step manual control at 1/3 EV steps for those who wish to take direct control of how lighting will affect the results.



2.5-INCH LCD

A large, bright 2.5-inch LCD fills the camera's back, offering accurate previews of the framed shot, and making it easy to get the settings just right.

Technology that lets you control how light is best captured

When you want more than the fully automatic operation of Program and other modes, the COOLPIX P1 and P2 also offer Aperture-priority Auto Mode for greater manual control over the results. The large LCD on the back makes it easier to select functions, either by name or by icon. And, if you want a main menu selection explained, simply press the handy Help button.



APERTURE
PRIORITY AUTO



Innovative Nikon technologies that optimize images within the camera

D-Lighting



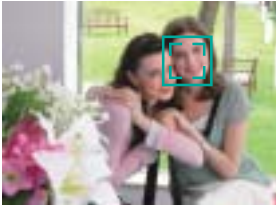
Without D-Lighting



With D-Lighting

D-Lighting brings out optimal detail and contrast by compensating for underexposed areas without affecting properly exposed areas.

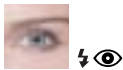
Face-priority AF*



Face-priority AF employs advanced technologies to automatically locate and focus on people's faces, ensuring great portraits with sharp focus every time.

* Face recognition capability may be limited in some shooting situations.

In-Camera Red-Eye Fix



Nikon's exclusive In-Camera Red-Eye Fix performs automatic in-camera correction to rid photos of the annoying problem of red-eye that sometimes occurs in flash photography for pleasing, natural-looking results.

Advanced Scene Modes

Sunset



Normal



Effect 1



Effect 2

Dusk/Dawn



Normal



Effect 1



Effect 2

In addition to a selection of 16 Scene Modes, Nikon adds a new level of fine control by providing Advanced Scene Modes for 11 of the Scene Modes. These offer a choice of three effects that can further enhance the results of several of the automated Scene Modes to more closely fit your personal preferences.

Macro Mode



Macro Mode lets you compose as close as 4cm from the subject and take closer control over the results.

High quality VGA movie recording with e-VR

Record movies with sound at a full 30fps in TV (640*) mode, 15fps for small size (320), or smaller size (160).

e-VR (electronic vibration reduction) adds greater stability for better results.



Date search function



View a list that organizes your shots by date for easy confirmation of what you shot on a particular day. For extra convenience, settings can be made or effects applied to any individual image, or a group of images within the list.

32MB internal memory*

32MB* of built-in memory ensures you always get your shot, even when caught without an SD memory card inserted in the camera.

* 32MB/COOLPIX P1 and 16MB/COOLPIX P2

2.3fps* continuous shooting

The ability to shoot in bursts at a speed of 2.3 frames per second* makes it easier to capture just the right expression or action of moving subjects.

* 2.3 shots in Continuous H mode (COOLPIX P1 only),
2.5 shots for the COOLPIX P2 in Continuous mode.



Direct Printing

Print directly to any PictBridge-compatible printer for a quick and convenient way to produce great prints, without needing a computer to process the job.



Powerful lithium-ion battery

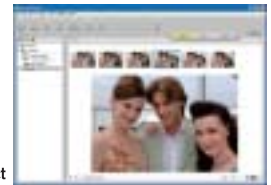
The Rechargeable Lithium-ion battery EN-EL8 is capable of shooting approximately 180 shots* on a single charge.

* Approx. 180 shots (COOLPIX P1)/ Approx. 190 shots (COOLPIX P2). Figures based on CIPA standard, image mode set to Normal, image mode at 8M(COOLPIX P1) and 5M (COOLPIX P2).

PictureProject

PictureProject software (included) offers a versatile, powerful and user-friendly interface for transferring, organizing, editing and sharing your pictures. A new version prepared to coincide with the release of the COOLPIX P1 and P2 also adds support for the new Wi-Fi functions,

including a handy setup utility, as well as intuitive controls over the various wireless image transfer options.



Wireless Printer Adapter (optional)

Connect the Wireless Printer Adapter to a PictBridge-compatible printer's USB port, and enjoy cable-free printing straight from the camera.



Nikon Digital Camera COOLPIX P1/P2 Specifications

Type:	Compact digital camera
Effective pixels:	8.0 million (P1)/ 5.1 million (P2)
CCD:	P1: 1/1.8-inch type (8.31 million total pixels) / P2: 1/1.8-inch type (5.26 million total pixels)
Image modes:	P1: 8M (3264), 5M (2592), 3M (2048), 2M(1600), 1M (1280), PC (1024), TV (640), 3:2 (3264) / P2: 5M (2592), 3M (2048), 2M(1600), 1M (1280), PC (1024), TV (640), 3:2 (2592)
Lens:	3.5x Zoom-Nikkor; 7.5-26.3mm (35mm [135] format equivalent to 36-126mm); f/2.7-5.2; 7 elements in 6 groups; Digital zoom: up to 4x
Focus range:	50cm (19.6 in.) to infinity (∞), 4cm (1.6 in.) to infinity (∞) in Macro Mode
LCD monitor:	2.5-inch type, 110,000-dot TFT LCD monitor with brightness adjustment
Storage media:	Internal memory (P1: approx. 32MB, P2: approx. 16MB), SD memory card
Shooting modes:	Auto, Programmed Auto, Aperture-priority Auto, Scene (Panorama assist, Beach/Snow, Museum, Copy, Sports), Advanced Scene (Portrait [Face AF], Portrait, Party/Indoor, Night portrait, Landscape, Night landscape, Sunset, Dusk/Dawn, Fireworks show, Back light, Close up), Voice recording, BSS (Best Shot Selector), Blur Warning, Date imprint, Self-timer (3, 10 sec.)
Movie:	With sound: TV movie (640*) at 30fps, TV movie (640) at 15fps, Small size (320) at 15fps, Smaller size (160) at 15fps.; Sepia movie (320) at 5fps, B/W movies at 15fps; Without sound: Time-lapse movie at 30fps, Electronic VR (Vibration Reduction) available
Capture modes:	P1: 1) Single, 2) Continuous H (approx. 2.3fps), 3) Continuous L (approx. 2.0fps), 4) Ultra HS (up to 100 pictures at up to 30fps), 5) Multi-shot 16 (16fps 1/16 in size), 6) 5 shot buffer (approx. 1fps), 7) Intvl timer shooting / P2: 1) Single, 2) Continuous (approx. 2.5fps), 3) Ultra HS (up to 40 pictures at up to 30fps), 4) Multi-shot 16 (16fps 1/16 in size), 5) 5 shot buffer (approx. 1.2fps), 6) Intvl timer shooting
Number of frames:	P1: Fine: approx. 7, Normal: approx. 14, Basic: approx. 27 / P2: Fine: approx. 5, Normal: approx. 10, Basic: approx. 20
Built-in flash:	Range: 0.5-3.8m/ 1' 8" - 12' 6" (W), 0.5-2.0m/ 1' 8" - 6' 7" (T); Flash modes: Auto, Auto with Red-eye Reduction (In-Camera Red-Eye Fix), Flash Cancel, Anytime Flash, Slow Sync and Rear Curtain Sync.
Interface:	Wi-Fi, USB 2.0, Audio Video output
Wireless capability:	IEEE802.11b/g, wireless range up to 30m (depending on environment)
Supported languages:	German/English/Spanish/French/Italian/Dutch/Swedish/Japanese/Simplified Chinese/Traditional Chinese/Korean/Russian selectable in menu display
Power requirements:	One Rechargeable Li-ion Battery EN-EL8 (supplied), AC Adapter EH-62C (optional)
Battery life:	P1: Approx. 180 shots with EN-EL8 Rechargeable Battery / P2: Approx. 190 shots with EN-EL8 (based on CIPA standard*)
Dimensions (WxHxD):	Approx. 91 x 60 x 39mm (3.6 x 2.4 x 1.5 in.)
Weight:	Approx. 170g (6 oz.) (without battery and SD memory card)
Supplied Accessories**:	Rechargeable Li-ion Battery EN-EL8, Battery Charger MH-62, USB Cable, Audio Video Cable, Strap, PictureProject CD-ROM
Optional Accessories:	AC Adapter EH-62C, Wireless Printer Adapter PD-10

* Industry standard for measuring life of camera batteries. Measured at 25°C (77°F); zoom adjusted with each shot, built-in flash fired with every other shot, image mode set to Normal (COOLPIX P1: 8M; COOLPIX P2: 5M).
** Supplied accessories may differ by country or area.

PictureProject System Requirements

OS:	Macintosh: Mac OS X version 10.1.5 or later (version 10.2.8 or later required for Burn Disc option) / Windows: Windows XP Home Edition/Professional, Windows 2000 Professional, Windows Me, Windows 98SE pre-installed models
RAM:	Macintosh: 64MB or more recommended / Windows: 64MB or more recommended (128MB with muvee option)
Hard disk:	60MB required for installation
Display:	800 x 600 or more with 16-bit color (full color recommended)
Others:	CD-ROM drive required for installation Only built-in USB ports are supported

Microsoft® and Windows® are either registered trademarks or trademarks of Microsoft Corporation in the United States and/or other countries. Macintosh® and QuickTime® are either registered trademarks or trademarks of Apple Computer Inc. in the United States and/or other countries. The FotoNation logo is a trademark. The SD logo is a trademark. PictBridge is a trademark. D-Lighting technology is provided by Apical Limited. Face-priority AF technology is provided by Identix®. Products and brand names are trademarks or registered trademarks of their respective companies. Images on LCDs and monitors shown in this brochure are simulated.

Specifications and equipment are subject to change without any notice or obligation on the part of the manufacturer. August 2005 ©2005 NIKON CORPORATION



WARNING TO ENSURE CORRECT USAGE, READ MANUALS CAREFULLY BEFORE USING YOUR EQUIPMENT, SOME DOCUMENTATION IS SUPPLIED ON CD-ROM ONLY.



NIKON CORPORATION

Fuji Bldg., 2-3, Marunouchi 3-chome, Chiyoda-ku
Tokyo 100-8331, Japan

<http://nikonimaging.com/>

En