



At the heart of the image

DIGITAL CAMERA
COOLPIX
52

All-weather
Metal Body





There's so much more to the COOLPIX S2 than its super slim, sleek, elegant lines.

Inside its all-weather, splash-proof aluminum body* lies a 3x optical Zoom-Nikkor ED** lens that makes the most of 5.1-megapixel image resolution to guarantee incredibly detailed, sharp, colorful images.

Even though it's not much bigger than a credit card, the COOLPIX S2 is packed full of Nikon's innovative photo-enhancing features. And with its large 2.5-inch LCD screen, you can clearly and easily see all your super-sharp photos.

Incredibly fast start-up time and a quick-fire continuous shooting mode mean whatever the occasion and whatever the weather, the stylish COOLPIX S2 will give you the results you want.

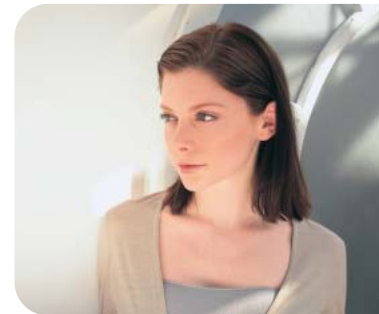
*The all-weather metal body of the COOLPIX S2 offers "splash proof" water resistance equivalent to IEC 60529 IPX4. It is not waterproof and should never be immersed in water.

**Nikon's ED (Extra-low Dispersion) glass offers superior sharpness and optimal color correction.

Open up to quality



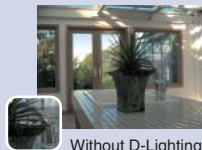
Go with the flow



Capture the entire moment

D-Lighting

D-Lighting corrects insufficient exposure — keeping well-exposed parts of pictures exactly as they are, while automatically adding detail and light to underexposed areas.



Without D-Lighting



With D-Lighting

Face-priority AF*

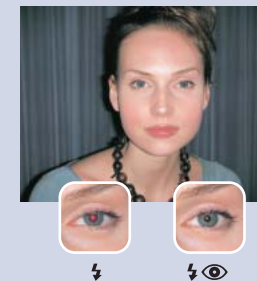
The Face-priority AF function automatically detects, then focuses on people's faces, resulting in well-defined, sharp portraits no matter where the person is in the frame.

* Face recognition capability may be limited in some shooting conditions.



In-Camera Red-Eye Fix

The Coolpix S2's In-Camera Red-Eye Fix automatically detects and eliminates any red-eye, which is sometimes caused by flash.



COOL-STATION MV-12

The COOL-STATION MV-12 charges batteries while they are still in the camera, gives you direct connection to a TV and links up to a computer via USB cable.

Nikon Digital Camera COOLPIX S2 Specifications

Type:	Digital camera S2
Effective pixels:	5.1 million
CCD:	1/2.5-inch type (5.36 million total pixels)
Image modes:	High (2592*), Normal (2592), Normal (2048), PC (1024), TV (640)
Lens:	3x Zoom-Nikkor ED; 5.8-17.4mm (35mm [135] format equivalent to 35-105mm); f/3.0-5.4; 12 elements in 10 groups; Digital zoom: up to 4x
Focus range:	30cm (12 in.) to infinity (∞), 4cm (1.6 in.) to infinity (∞) in Macro Mode
LCD monitor:	2.5-inch type, 110,000-dot Amorphous silicon TFT LCD monitor with brightness adjustment
Storage media:	Internal memory: approx. 12MB, SD memory card
Shooting modes:	Auto, Scene Assist (Portrait, Landscape, Sports, Night portrait), Scene (Party/Indoor, Beach/Snow, Sunset, Dusk/Dawn, Night landscape, Close up, Museum, Fireworks show, Copy, Back light, Panorama assist, Voice recording), BSS (Best Shot Selector), Blur Warning, Date imprint, Self-timer (10 sec.)
Movie:	With sound: TV movie (640) at 15fps, Small size (320) at 15fps, Smaller size (160) at 15fps; Without sound: Time-lapse movie at 15fps
Capture modes:	1) Single, 2) Continuous (approx. 1.8fps), 3) Multi-shot 16 (16 frames 1/16 in size)
Number of frames (w/ Internal memory):	5M: High (2592*) approx. 5, Normal (2592) approx. 10, 3M: Normal (2048) approx. 17
Built-in flash:	Range: 0.3-2.5m/ 1' - 8'2" (W), 0.3-1.4m/ 1' - 4'7" (T); Flash modes: Auto, Auto with Red-eye Reduction (In-Camera Red-Eye Fix), Anytime Flash, Flash Cancel and Slow sync.
Interface (via COOL-STATION MV-12):	USB, Audio Video output
Water resistance:	Equivalent to IEC 60529 IPX4 ("splash proof")*
Supported languages:	German/English/Spanish/French/Italian/Dutch/Swedish/Japanese/Simplified Chinese/Traditional Chinese/Korean/Russian selectable in menu display
Power requirements:	One Rechargeable Li-ion Battery EN-EL8 (supplied), AC Adapter EH-63 (supplied)
Battery life (approx.):	Approx. 190 images with EN-EL8 Rechargeable Battery (based on CIPA standard†)
Dimensions (WxHxD):	Approx. 91.9 x 59 x 22mm (3.6 x 2.3 x 0.9 in.)
Weight:	Approx. 140g (5 oz.) (without battery and memory card)
Supplied accessories:‡	COOL-STATION MV-12, Strap, USB Cable UC-E10, Audio Video Cable EG-E5000, AC Adapter EH-63, Rechargeable Li-ion Battery EN-EL8, PictureProject CD-ROM
Optional accessories:	COOL-STATION MV-12, USB Cable UC-E10, Audio Video Cable EG-E5000, AC Adapter EH-63, Rechargeable Li-ion Battery EN-EL8, Battery Charger MH-62

* Based on Nikon test results. The all-weather metal body of the COOLPIX S2 offers "splash proof" water resistance. It is not waterproof and should never be immersed in water.

† Industry standard for measuring life of camera batteries. Measured at 25°C (77°F); zoom adjusted with each shot, built-in flash fired with every other shot, image mode set to Normal.

‡ Supplied accessories may differ by country or area.

PictureProject System Requirements

OS	Macintosh: Mac® OS X version 10.1.5 or later (version 10.2.8 or later required for Burn Disc option) / Windows: Windows® XP Home Edition/Professional, Windows® 2000 Professional, Windows® ME, Windows® 98SE pre-installed models
RAM:	Macintosh: Minimum 64MB / Windows: Minimum 64MB (128MB with muvee option)
Hard disk:	60MB required for installation
Display:	800 x 600 or more with 16-bit color (full color recommended)
Others:	CD-ROM drive required for installation Only built-in USB ports are supported

Microsoft® and Windows® are either registered trademarks or trademarks of Microsoft Corporation in the United States and/or other countries. Macintosh® and QuickTime® are either registered trademarks or trademarks of Apple Computer Inc. in the United States and/or other countries. The FotoNation logo is a trademark. The SD logo is a trademark. PictBridge is a trademark. D-Lighting technology is provided by Apical Limited. Face-priority AF technology is provided by Identix®. Products and brand names are trademarks or registered trademarks of their respective companies. Images on LCDs and monitors shown in this brochure are simulated.

Specifications and equipment are subject to change without any notice or obligation on the part of the manufacturer.
April 2005 ©2005 NIKON CORPORATION



WARNING

TO ENSURE CORRECT USAGE, READ MANUALS CAREFULLY BEFORE USING YOUR EQUIPMENT. SOME DOCUMENTATION IS SUPPLIED ON CD-ROM ONLY.



NIKON CORPORATION

Fuji Bldg., 2-3, Marunouchi 3-chome, Chiyoda-ku,
Tokyo 100-8331, Japan

<http://nikonimaging.com/>

En