



*At the heart of the image*

DIGITAL CAMERA  
**COOLPIX**  
**{3}**



## A sharper kind of style

The COOLPIX S3 is every bit as eye-catching as the images it captures. Packing 6.0 effective megapixels and a 3x Zoom-Nikkor ED\* lens into a slim, appealing design, it gives you all the style with none of the compromise. And offering a range of unique Nikon features for enhanced results, it gives you the power to produce better pictures, more of the time. It's also available in a range of attractive colors, extending the joy of self-expression way beyond the moment of shooting.

Step out in style, step ahead in quality, step up to the COOLPIX S3.

\*Nikon's ED (Extra-low Dispersion) glass offers superior sharpness and optimal color correction.



Ivory white



Platinum silver



Brown red



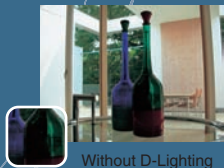
6  
Megapixels

3x  
Zoom

2.5  
inch LCD

## D-Lighting

D-Lighting rescues shots with insufficient exposure or excessive backlight — keeping well-exposed parts as they are, while automatically adding detail and light to underexposed areas.



Without D-Lighting



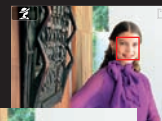
With D-Lighting



## Face-priority AF\*

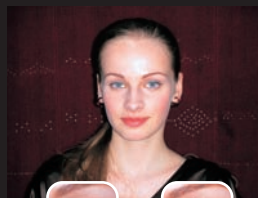
The clever Face-priority AF function automatically finds, then focuses on people's faces — giving you satisfying pin-sharp portraits, wherever your subject is in the shot.

\* Face recognition capability may be limited in some shooting conditions.



## In-Camera Red-Eye Fix

In-Camera Red-Eye Fix automatically detects the occurrence of the red-eye effect sometimes caused by flash, then compensates for it to produce better-looking portraits in low light.



A broader range  
of possibilities



## COOL-STATION

Not only does the COOL-STATION MV-11/ MV-11B allow you to recharge batteries without removing them from the camera. It also offers a direct USB link to your computer and even connects to a TV too.

Note: MV-11 or MV-11B supplied depending on camera body color.



## Waterproof Case

With the optional Waterproof Case WP-CP5, you're free to carry on shooting in the rain or on the beach. You can also use it when scuba diving to 40m depths, while taking advantage of the COOLPIX S3's Underwater Scene Mode.

# Nikon Digital Camera COOLPIX S3 Specifications

<b>Type:</b>	Compact digital camera
<b>Effective pixels:</b>	6.0 million
<b>CCD:</b>	1/2.5-inch type (6.4 million total pixels)
<b>Image modes:</b>	High (2816*), Normal (2816), Normal (2048), PC (1024), TV (640)
<b>Lens:</b>	3x Zoom-Nikkor ED; 5.8-17.4mm (35mm [135] format equivalent to 35-105mm); f/3.0-5.4; 12 elements in 10 groups; Digital zoom: up to 4x
<b>Focus range:</b>	30cm (12 in.) to infinity ( $\infty$ ), 4cm (1.6 in.) to infinity ( $\infty$ ) in Macro Mode
<b>LCD monitor:</b>	2.5-inch type, 110,000-dot TFT LCD monitor with brightness adjustment
<b>Storage media:</b>	Internal memory: approx. 12MB, SD memory card
<b>Shooting modes:</b>	Auto, Scene Assist (Portrait, Landscape, Sports, Night portrait), Scene (Party/Indoor, Beach/Snow, Sunset, Dusk/Dawn, Night landscape, Close up, Museum, Fireworks show, Copy, Back light, Panorama assist, Voice Recording, Underwater), BSS (Best Shot Selector), Color Options, Blur Warning, Date Imprint, Self-timer (10 sec.)
<b>Movie:</b>	With sound: TV movie (640) at 15fps, Small size (320) at 15fps, Smaller size (160) at 15fps; Without sound: Time-lapse movie at 15fps
<b>Capture modes:</b>	1) Single, 2) Continuous (approx. 1.6fps), 3) Multi-shot 16 (16 frames 1/16 in size)
<b>Number of frames (w/ Internal memory):</b>	6M: High (2816*) approx. 4, Normal (2816) approx. 9, 3M: Normal (2048) approx. 16
<b>Built-in flash:</b>	Range: 0.3-2.5m/ 1 ft. – 8 ft. 2 in. (W), 0.3-1.4m/ 1 ft. – 4 ft. 7 in. (T); Flash modes: Auto, Auto with Red-eye Reduction (In-Camera Red-Eye Fix), Flash Cancel, Anytime Flash and Slow sync.
<b>Interface (via COOL-STATION MV-11/MV-11B):</b>	USB, Audio Video output
<b>Supported languages:</b>	German/English/Spanish/French/Italian/Dutch/Swedish/Japanese/Simplified Chinese/Traditional Chinese/Korean/Russian selectable in menu display
<b>Power requirements:</b>	One Rechargeable Li-ion Battery EN-EL8 (supplied), AC Adapter EH-63 (supplied)
<b>Battery life (approx.):</b>	Approx. 190 images with Rechargeable Battery EN-EL8 (based on CIPA standard*)
<b>Dimensions (WxHxD):</b>	Approx. 89.9 x 57.5 x 19.7mm (3.5 x 2.3 x 0.8 in.)
<b>Weight:</b>	Approx. 118g (4 oz.) (without battery and memory card)
<b>Supplied accessories:†</b>	COOL-STATION MV-11/MV-11B, Strap, USB Cable UC-E10, Audio Video Cable EG-E5000, AC Adapter EH-63, Rechargeable Li-ion Battery EN-EL8, PictureProject CD-ROM
<b>Optional accessories:</b>	COOL-STATION MV-11/MV-11B, USB Cable UC-E10, Audio Video Cable EG-E5000, AC Adapter EH-63, Rechargeable Li-ion Battery EN-EL8, Battery Charger MH-62, Waterproof Case WP-CP5‡ * Industry standard for measuring life of camera batteries. Measured at 25°C (77°F); zoom adjusted with each shot, built-in flash fired with every other shot, image mode set to Normal. † Supplied accessories may differ by country or area. ‡ Not available in some countries or areas.

## PictureProject System Requirements

<b>OS</b>	<b>Macintosh:</b> Mac® OS X version 10.1.5 or later (version 10.2.8 or later required for Burn Disc option) / <b>Windows:</b> Windows® XP Home Edition/Professional, Windows® 2000 Professional, Windows® ME, Windows® 98SE pre-installed models
<b>RAM:</b>	<b>Macintosh:</b> 64MB or more recommended / <b>Windows:</b> 64MB or more recommended (128MB with muvee option)
<b>Hard disk:</b>	60MB required for installation
<b>Display:</b>	800 x 600 or more with 16-bit color (full color recommended)
<b>Others:</b>	CD-ROM drive required for installation Only built-in USB ports are supported

Microsoft® and Windows® are either registered trademarks or trademarks of Microsoft Corporation in the United States and/or other countries. Macintosh® and QuickTime® are either registered trademarks or trademarks of Apple Computer Inc. in the United States and/or other countries. The FotoNation logo is a trademark. The SD logo is a trademark. PictBridge is a trademark. D-Lighting technology is provided by Apical Limited. Face-priority AF technology is provided by Identix®. Products and brand names are trademarks or registered trademarks of their respective companies. Images on LCDs and monitors shown in this brochure are simulated.

Specifications and equipment are subject to change without any notice or obligation on the part of the manufacturer.  
August 2005 ©2005 NIKON CORPORATION



TO ENSURE CORRECT USAGE, READ MANUALS CAREFULLY BEFORE USING YOUR EQUIPMENT, SOME DOCUMENTATION IS SUPPLIED ON CD-ROM ONLY.



## NIKON CORPORATION

Fuji Bldg., 2-3, Marunouchi 3-chome, Chiyoda-ku  
Tokyo 100-8331, Japan

<http://nikonimaging.com/>