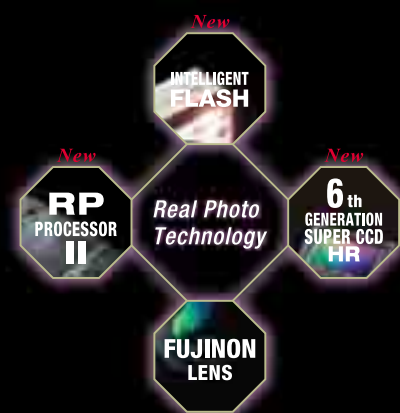




DIGITAL CAMERA
FinePix F30 NEW



The Evolution of Real Photo Technology
World's First Digital Compact with ISO 3200 Sensitivity*

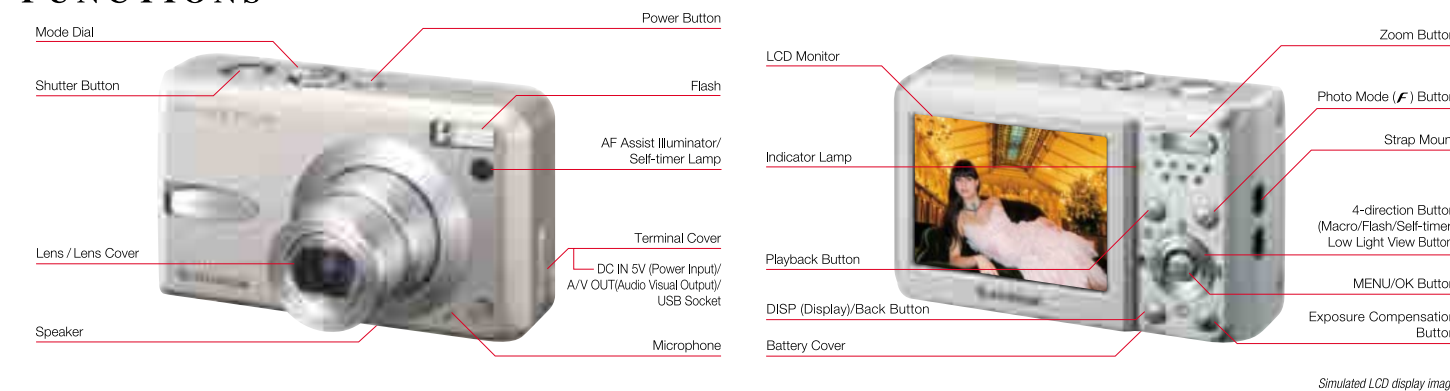
The future of digital photography has arrived. Equipped with a new "eye" and "brain", the new generation of Real Photo Technology from Fujifilm captures the images you really want – with greater ease, in more situations, and with higher quality.

The new 6th Generation Super CCD HR captures more light from the superb Fujinon lens more efficiently with less light loss, and sends the image to the processor with less noise. The new RP Processor II featuring enhanced double noise reduction lets users take full advantage of the phenomenal ISO 3200 sensitivity of the FinePix F30. Other improvements include "Intelligent Flash" and upgraded signal processing for more accurate color reproduction.

All these enhancements add up to more stunning photos every time you press the shutter.

*As of January 2006, ISO 3200 at full 6.3 megapixel resolution.

FUNCTIONS



SPECIFICATIONS

DIGITAL CAMERA FinePix F30

| | | |
|------------------------------------|---|--|
| Number of effective pixels* | 6.3 million pixels | |
| CCD sensor | 1/1.7-inch Super CCD HR | |
| Number of recorded pixels | Still image: 2,848 × 2,136 / 3,024 × 2,016 / 2,048 × 1,536 / 1,600 × 1,200 / 640 × 480 pixels | |
| | Movie: 640 × 480 / 320 × 240 pixels (30 frames/sec.) with monaural sound | |
| Storage media | Internal memory (approx. 10MB), xD-Picture Card™ (16MB - 1GB) | |
| File format | Still image: JPEG (Exif Ver 2.2**), AVI (Motion JPEG), WAV (Design rule for Camera File system compliant / DPOF-compatible) | |

| Modes | Still image | | | | | | Movie | |
|---------------------------|-------------|-------------|-------------|-------------|-------------|-----------|-------------------|-------------------|
| | 6M(Fine) | 6M(Normal) | 6M(3:2) | 3M | 2M | 0.3M | 640 × 480 | 320 × 240 |
| Number of recorded pixels | 2848 × 2136 | 2848 × 2136 | 3024 × 2016 | 2048 × 1536 | 1600 × 1200 | 640 × 480 | 640 × 480 | 320 × 240 |
| 16MB | 5 | 10 | 10 | 19 | 25 | 122 | Approx. 13 sec. | Approx. 26 sec. |
| 32MB | 10 | 20 | 20 | 40 | 50 | 247 | Approx. 27 sec. | Approx. 54 sec. |
| 64MB | 21 | 42 | 42 | 81 | 101 | 497 | Approx. 55 sec. | Approx. 109 sec. |
| 128MB | 42 | 84 | 84 | 162 | 204 | 997 | Approx. 111 sec. | Approx. 219 sec. |
| 256MB | 85 | 169 | 169 | 325 | 409 | 1997 | Approx. 223 sec. | Approx. 7.3 min. |
| 512MB | 170 | 339 | 339 | 651 | 818 | 3993 | Approx. 7.4 min. | Approx. 14.6 min. |
| 1GB | 341 | 680 | 680 | 1305 | 1639 | 7995 | Approx. 14.9 min. | Approx. 29.3 min. |

The number of images and recording time will vary slightly depending on the type of subject.

| | |
|--------------------------|---|
| Lens | Fujinon 3× optical zoom lens, F2.8 - F5.0 |
| Lens focal length | f=8.0-24.0mm (Equivalent to 36-108mm on a 35mm camera) |
| Focus | Auto Focus (Center, Multi, Continuous) AF assist illuminator available |
| Focus distance | Normal: Approx. 60cm / 2.0ft. to infinity Macro: Wide-angle: Approx. 5cm / 2.0in. to 80cm / 2.6ft. Telephoto: Approx. 30cm / 1.0ft. to 80cm / 2.6ft. |
| Shutter speed | 3 sec. to 1/2000 sec. depend on shooting mode. 15 sec. at long exposure mode. |
| Aperture | F2.8 - F8 (1/3 EV step) at Wide-angle. F5.0 - F8 (1/3 EV step) at Telephoto |
| Sensitivity | AUTO / Equivalent to ISO 100 / 200 / 400 / 800 / 1600 / 3200 |
| Exposure control | 256-zone TTL metering - Multi / Spot / Average |
| Exposure mode | Programmed AE, Shutter priority AE, Aperture priority AE |
| White balance | Automatic scene recognition / Preset (Fine, Shade, Fluorescent light (Daylight), Fluorescent light (Warm White), Fluorescent light (Cool White), Incandescent light) / Custom |
| LCD monitor | 2.5-inch TFT (Approx. 230,000 pixels), approx. 100% coverage |
| Flash | Auto flash Effective range: Wide angle: approx. 0.6m - 6.5m (2.0ft. - 21.3ft.) Telephoto: approx. 0.6m - 3.5m (2.0ft. - 11.5ft.) Macro: approx. 0.3m - 0.8m (1.0ft. - 2.6ft.) Flash mode: Auto, Red-eye Reduction, Forced Flash, Suppressed Flash, Slow Synchro, Red-eye Reduction + Slow Synchro |
| Self-timer | Approx. 10 sec. / 2 sec. delay |
| Video output | NTSC / PAL selectable |
| Digital interface | USB 2.0 High-speed |
| Power Source | NP-95 Rechargeable Battery or AC Power Adapter AC-SVC (included) |
| Dimensions | 92.7 (W) × 56.7 (H) × 27.8 (D) mm / 3.6 (W) × 2.2 (H) × 1.1 (D) in. |
| Weight | Approx. 155g / 5.5oz. (excluding battery and media) |

| | |
|-------------------------|--|
| Camera functions | Approx. 6.2× (3× optical zoom lens is used together; Max. zoom scale: 18.6×) |
| Digital zoom | Auto brightness up function plus low light view button |
| LCD brightness | Normal: Auto, Scene Position (Natural Light, Natural Light & with Flash, Portrait, Landscape, Sport, Night, Fireworks, Sunset, Snow, Beach, Underwater, Museum, Party, Flower Close-Up, Text) |
| Shooting modes | Continuous: 1.Top-3: max. 2.2 frames/sec., up to 3 frames 2.Final-3: max. 2.2 frames/sec., up to 3 frames 3.Long-period: Depend on Memory size. 1.5 sec. intervals at 6M(N) depending on quality level |
| Color modes | High speed shooting B&W / CHROME / STANDARD |
| Voice Memo | Up to 30 sec. WAV format |
| Playback | Single frame, 9 Multi-frame, Day sorting display, Image rotation, Post shot assist window (3 frames) |
| Auto Playback | Single image, multiple images, fade-in, with clock |

Microsoft, Windows, and Windows logo are trademarks, or registered trademarks of Microsoft Corporation in the United States and/or other countries. Macintosh and Mac OS are trademarks of Apple Computer, Inc., registered in the U.S. and other countries. All other trademarks are the property of their respective holders.

| | |
|-----------------------------|---|
| Accessories included | NP-95 Rechargeable Battery, AC Power Adapter AC-SVC, Hand strap, USB cable, A/V cable, CD-ROM: FinePixViewer |
| Optional accessories | xD-Picture Card™: 64MB, 128MB, 256MB, 512MB, 1GB PC Card Adapter DPC-AD CompactFlash™ Card Adapter DPC-CF Image Memory Card Reader DPC-R1 AC Power Adapter AC-SVX Rechargeable Battery NP-95 Battery charger BC-65S Soft Case SC-FXF30 Waterproof Case WP-FXF30 |

| | | |
|--|--------------------|--------------------|
| Guide to the number of available frames for battery operation | | |
| Battery | LCD monitor status | Number of frames |
| NP-95 | LCD monitor ON | Approx. 580 frames |

The number of frames per charge will decrease in High Speed Shooting mode.

According to the Camera & Imaging Products Association (CIPA) standards***: The storage media should be xD-Picture Card. The battery (NP-95) is supplied with the camera.

* Number of effective pixels: The number of pixels on the image sensor which receive input light through the optical lens, and which are effectively reflected in the final output data of the still image.

** Exif 2.2 is a newly revised digital camera file format that contains a variety of shooting information for optimal printing.

*** "CIPA DC-002-2003 'Standard Procedure for Measuring Digital Still Camera Battery Consumption'" (extract) Pictures shall be taken at a temperature of 23 °C, with the LCD monitor turned on, the zoom moved from full wide-angle to full telephoto (or vice-versa) and back again to its original position every 30 seconds, the flash used at full power every second shot and the camera turned off and then on again once every 10 shots.



Specifications are subject to change without notice.

FUJIFILM
I&I - Imaging & Information

DIGITAL CAMERA
FinePix F30

6.3 MegaPixels

ISO 3200

3.0x Optical Zoom

2.5 inch LCD

NEW



Fujifilm - Official Imaging Sponsor of
2006 FIFA World Cup Germany™

For more information on the full range of Fujifilm digital products, please visit our Website: <http://home.fujifilm.com/products/digital>

FUJIFILM
FUJI PHOTO FILM CO., LTD.
26-30, NISHIAZABU 2-CHOME, MINATO-KU, TOKYO 106-8620, JAPAN

Ref. No. EB-600E (SK-06-02-F2586-F9711) Printed in Japan ©2006 Fuji Photo Film Co., Ltd.

Capture the moment as your eye sees it!



Conventional digital camera (ISO100, 1/100 sec., F2.8, with flash)



FinePix F30 (ISO1600, 1/100 sec., F2.8, with "Intelligent Flash")

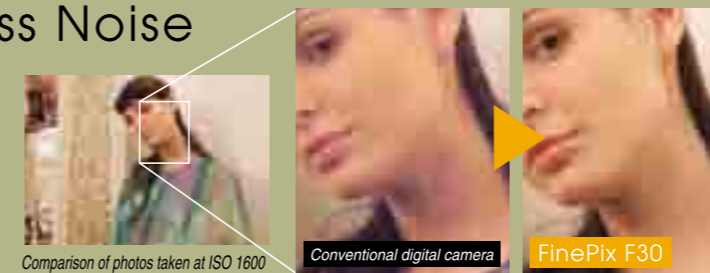
FinePix F30 - even closer to the human eye.

The human eye sees things in motion in sharp detail. It instantly adjusts to low light and captures the entire scene. At Fujifilm, we seek to match these capabilities in our cameras, and the new FinePix F30 has brought us even closer to this goal with two remarkable achievements: super high sensitivity up to ISO 3200 – the first time ever offered in a compact digital camera*, and "Intelligent Flash" – a newly developed program to control flash output! These new features work in concert to take beautiful photos under all lighting conditions. Even photos taken in low light capture the entire background without unnatural overexposure of the subject. Fujifilm invites you to experience the next stage of sensitivity!

ISO 3200 + 6.3 MegaPixels

More Sensitivity with Less Noise

The latest evolutionary leap in Real Photo Technology means that you enjoy astounding photos even when taking photos with 6.3 million effective pixels of resolution at the highest sensitivity of ISO 3200. With the heightened sensitivity, you can use a high-speed shutter to prevent camera shake or freeze subject movement, keeping blur to a minimum. Also photos taken in dimly lit conditions capture the entire background beautifully and naturally.



Comparison of photos taken at ISO 1600

Intelligent Flash

When using high sensitivity, the innovative "Intelligent Flash" feature automatically controls flash output to an appropriately low setting. This smart flash control technology recognizes scene conditions and determines the optimum flash output to give you superb results.



FinePix F30

ISO1600, 1/100sec., F2.8, with new "Intelligent Flash" – Both subject and background come out bright and clear

Conventional digital camera

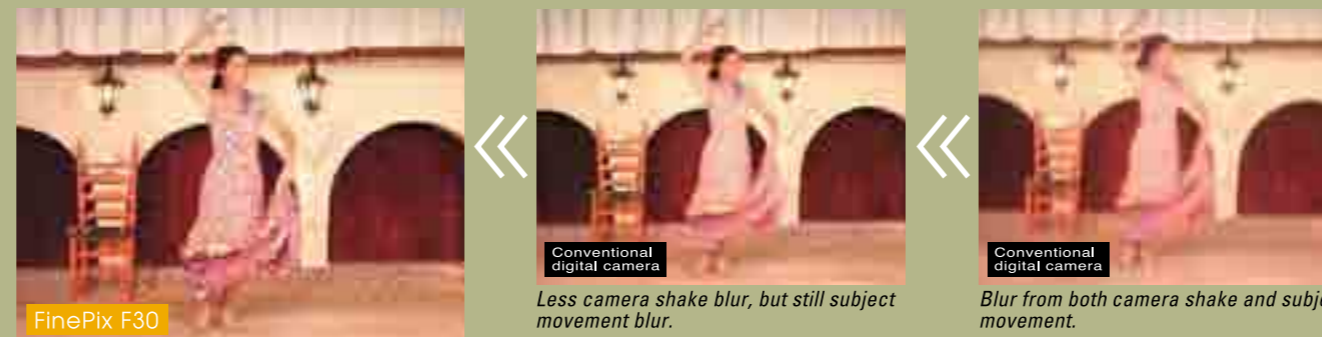
ISO1600, 1/100sec., F2.8, with flash – Background is captured but subject is "washed out"

Conventional digital camera

ISO100, 1/100sec., F2.8, with flash – No background detail and subject is "washed out"

PS (Picture Stabilization) mode

Perfect to prevent blurring due to a fast-moving subject or camera shake, this PS mode automatically sets the optimum ISO sensitivity and shutter speed to beautifully freeze the moment forever in sharp detail.



FinePix F30

Less camera shake blur, but still subject movement blur.

Blur from both camera shake and subject movement.

N Natural Light mode

In low-light situations where flash is prohibited or undesirable, you can still take beautiful photos with the "Natural Light" mode.



No "red eye"! No flash means no "red eye" phenomenon.

When flash is not allowed! Use Natural Light mode to record your visit to a museum or aquarium.

When flash is unwanted! Flashless means no awakened babies nor bothering others in a restaurant. Just priceless results.



2.5 inch LCD

With its high resolution of 230,000 pixels and convenient features like Auto Brightness and the new anti-glare, low-reflection CV Film developed by Fujifilm, the big 2.5 inch LCD monitor provides comfortable composition and viewing of photos whether in dim interiors or under bright sunlight.



Date-stamped album playback

Slide Show

Post Shot Assist Window

0.01 sec Shutter Response

The responsive FinePix F30 is ready when you are!

- Super-fast start-up time of only 1.4 sec.
- Shooting interval of 1.5 sec.
- Shutter release time lag of minimum 0.01 sec.* *After AF/AE locked

Approx. 580 Shots Per Charge

Enjoy 580 shots on a full charge! You can take hundreds of photos at a holiday or business trip destination without recharging.



Versatile Shooting modes

From full AUTO for quick and easy shooting to Manual for hands-on creativity, just turn the mode dial! Fujifilm makes it easy to take great pictures.

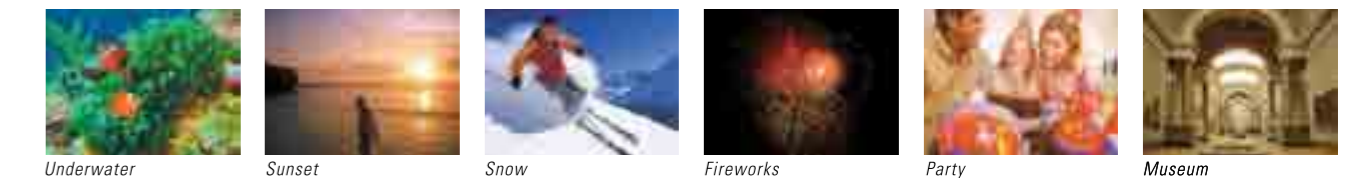
| | | |
|--|---|--|
| | Auto | Automatic setting for easy point and shoot. |
| | Manual | <ul style="list-style-type: none"> • White Balance • Exposure Control • Exposure Compensation • AF Mode |
| | Aperture-priority Auto Shutter-priority Auto | "A" mode to increase/decrease depth of field. "S" mode to freeze motion or create motion blur. |
| | Movie | Video record/playback with monaural sound* max. 29.3 min. at 320 x 240 pixels, or max. 14.9 min. at 640 x 480 pixels. |
| | Picture Stabilization | Prevent blur caused by subject movement or camera shake. |
| | Scene Position | Natural Light / Natural Light & with Flash / Portrait / Landscape / Sport / Night / Fireworks / Sunset / Snow / Beach / Underwater** / Museum / Party / Flower Close-Up / Text |

A Aperture-priority Auto

Other modes: Continuous, Macro, Slow Synchro **When using a 1GB xD-Picture Card™. **Waterproof Case WP-FX30 is required.

New Scene Positions

With a choice of 15 Scene Positions, you can quickly select exactly the right setting for every situation.



Underwater

Sunset

Snow

Fireworks

Party

Museum

"L" Form Body

With its distinctive "L-shaped" rear cover, FinePix F30 makes a sleek and stylish statement to express the cutting-edge functionality and performance of a new generation of Real Photo Technology inside. From the elegant logo design to the simple control layout, FinePix F30 is designed and engineered for performance and ease of use.



Other Features

- 3x Optical Zoom
- 10MB internal memory
- FinePix Photo Button for one-touch access to frequently used settings (image size, ISO sensitivity setting and FinePix Color mode)
- USB2.0 High-speed connectivity
- Video output (NTSC/PAL)
- PictBridge compatibility

