




| | | | |
|------------------------------------|---|----------------------|---|
| 5.2M Effective Pixels | ZOOM 3.4X Optical 4.1X Digital | 2-inch LCD |  PictBridge |
|------------------------------------|---|----------------------|---|

FinePix F455

SOPHISTICATED STYLE, DESIGNED FOR A COMFORTABLE HOLD

NEW



STYLE AND FUNCTIONALITY GO HAND IN HAND



ULTRA-COMPACT, EASY-TO-HOLD CAMERA

The FinePix F455 is an ultra-compact digital camera that nestles neatly in the palm, slips easily into pockets and small bags. The aluminum body provides a secure, comfortable hold, even when shooting one-handed.

BIG-SCREEN LCD LUXURY

Enjoy a bigger, sharper view: the extra-large 2-inch, 154,000-pixel TFT LCD monitor makes it easier to frame your shots and more enjoyable to review them. Even outdoors, it's bright and glare-free.

SUPER-SLIM 3.4X OPTICAL ZOOM

To fit full-size performance into such a compact camera, Fujifilm engineers developed a super-slim Fujinon lens that allows the high-performance 3.4x zoom lens (38-130mm equivalent) to retract fully into the ultra-slim body. Add digital zoom of up to 4.1x and you have remarkable shooting versatility.



Wide angle

3.4x optical zoom

3.4x optical plus 1.6x digital zoom



FEATURES FOR CONVENIENCE AND CREATIVITY

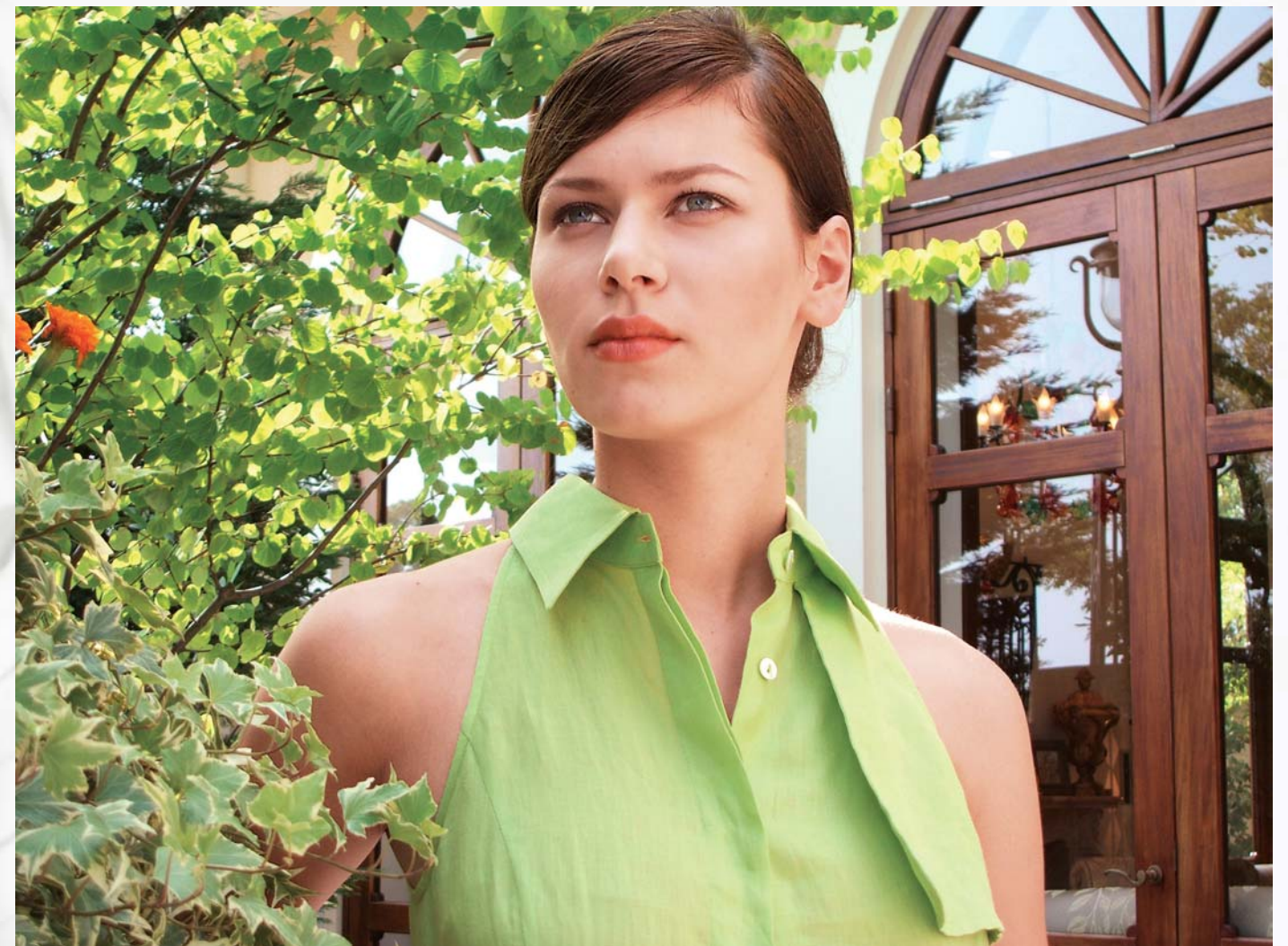
For total ease, choose the Auto mode and let the camera do the rest. Want more control? You also have a choice of Scene Position mode, manual shooting mode, slow synchro for dramatic night shots, and macro mode for high-impact close-ups.



S $\frac{1}{4}$ Slow Synchro Shooting

Macro Shooting

Movie Recording



JPEG mode, 2592 x 1944 pixels, 1/90 sec., f/3.4, ISO 80 equivalent

CLASS-LEADING IMAGE QUALITY



The FinePix F455 delivers brilliantly sharp, precisely detailed images. The camera utilizes 5.2 million effective pixels for remarkably superb image quality. It also benefits from Fujifilm's state-of-art digital and image processing technology in the form of the newly developed image processor which delivers true-to-life color reproduction and smoother tonality by precisely and accurately analyzing lighting conditions, and the color and tonality of subjects. This new, high-performance image processor is on the leading edge of progress in the field of digital imaging.



FINEPIX PHOTO MODE

The convenient **F** button gives you one-touch control of all image quality parameters, including quality setting, sensitivity, and FinePix Color mode. Now you'll have instant access to all your favorite settings.



DIRECT PRINTING WITHOUT A PC

The FinePix F455 incorporates the PictBridge standard, allowing you to send your image files to any PictBridge-compatible printer for computer-free printing.



EASY CONNECTION TO YOUR PC

The included PictureCradle and FinePixViewer software make it a snap to download image files, movie clips, and audio files to your computer, all while recharging the camera's battery. The PictureCradle can also be used to transform the camera into a handy "photo stand" which runs a slideshow of images on the LCD monitor.



OTHER FEATURES

- Movie recording with monaural sound
- Multi-language LCD monitor (Supports six languages)
- Video out socket for connecting to TV
- Rechargeable battery and AC power adapter included


FUNCTIONS



Simulated LCD display image

SPECIFICATIONS

DIGITAL CAMERA FinePix F455

| | |
|------------------------------------|---|
| Number of effective pixels* | 5.2 million pixels |
| CCD sensor | 1/2.5-inch CCD [Number of total pixels: 5.36 million pixels] |
| Number of recorded pixels | Still image: 2592×1944 (5.0 million)/2048×1536/1600×1200/640×480 pixels Movie: 320×240/160×120 pixels (10 frames/sec., with monaural sound) |
| Storage media | xD-Picture Card™ (16MB to 512 MB) |
| File format | Still image: JPEG (Exif Ver 2.2**)/Movie: AVI (Motion JPEG)  [Design rule for Camera File system compliant/DPOF-compatible] |

Number of images/recording time

| Still image | 5M Fine | 5M Normal | 3M | 2M | 0.3M |
|---------------------------|-------------|-------------|-------------|-------------|-----------|
| Quality | 5M Fine | 5M Normal | 3M | 2M | 0.3M |
| Number of recorded pixels | 2592 × 1944 | 2592 × 1944 | 2048 × 1536 | 1600 × 1200 | 640 × 480 |
| DPC-16 (16MB) | 6 | 12 | 19 | 25 | 122 |
| DPC-32 (32MB) | 12 | 25 | 40 | 50 | 247 |
| DPC-64 (64MB) | 25 | 50 | 81 | 101 | 497 |
| DPC-128 (128MB) | 51 | 102 | 162 | 204 | 997 |
| DPC-256 (256MB) | 102 | 204 | 325 | 409 | 1997 |
| DPC-512 (512MB) | 205 | 409 | 651 | 818 | 3993 |

Movie

| Quality | 320 × 240 | 160 × 120 |
|-----------------|-------------------|--------------------|
| DPC-16 (16MB) | Approx. 94 sec. | Approx. 4.8 min. |
| DPC-32 (32MB) | Approx. 3.2 min. | Approx. 9.7 min. |
| DPC-64 (64MB) | Approx. 6.3 min. | Approx. 19.4 min. |
| DPC-128 (128MB) | Approx. 12.7 min. | Approx. 39.0 min. |
| DPC-256 (256MB) | Approx. 25.5 min. | Approx. 78.1 min. |
| DPC-512 (512MB) | Approx. 51.0 min. | Approx. 156.3 min. |

The number of images and recording time will vary slightly depending on the type of subject.

| | |
|--------------------------|---|
| Lens | Fujinon 3.4× optical zoom lens (F2.8 – F5.5) |
| Lens focal length | Equivalent to 38 – 130 mm on a 35 mm camera |
| Focus | TTL contrast-type Auto focus |
| Focus distance | Normal: Approx. 60 cm/2.0 ft. to infinity Macro: Approx. 9 cm – 80 cm/3.6 in. – 2.6 ft. |
| Shutter speed | 2 sec. – 1/2000 sec. depending on the shooting mode |
| Aperture | F2.8 – F7.4 (automatically selected) |
| Sensitivity | Auto: AUTO (Equivalent to ISO 80 – 400, depending on conditions)/80/100/200/400 Manual/SP: ISO 80/100/200/400 |
| Exposure control | 64-zone TTL metering |
| Exposure modes | Programmed AE (Exposure compensation in manual mode) |
| White balance | Automatic Manual [Fine, Shade, Fluorescent light (Daylight), Fluorescent light (Warm White), Fluorescent light (Cool White), Incandescent light] |
| Viewfinder | Real-image optical viewfinder, approx. 78% coverage |
| LCD monitor | 2.0-inch low temperature polysilicon TFT (Approx. 154,000 pixels), approx. 97% coverage |
| Flash | Auto flash using flash control sensor Effective range: Wide angle (0.6 m – 3.6 m/2.0 ft – 12.0 ft) Telephoto (0.6 m – 2.0 m/2.0 ft – 6.7 ft) Flash mode: Auto, Red-eye Reduction, Forced Flash, Suppressed Flash, Slow Synchro, Red-eye Reduction + Slow Synchro |
| Self-timer | Approx. 10 sec. delay |
| Video output | NTSC/PAL selectable |
| Digital interface | USB |
| Terminal | Multiple Connector (for included USB & A/V cable, PictureCradle) |
| Power source | NP-40 battery (included) or AC power adapter AC-5VW (included) |
| Dimensions | 92.6 (W) × 56.4 (H) × 21.9 (D) mm/3.6(W) × 2.2(H) × 0.9(D) in. |
| Weight | Approx. 140g/4.9oz. (excluding battery and media) |

Microsoft, Windows, and Windows logo are trademarks, or registered trademarks of Microsoft Corporation in the United States and/or other countries. Macintosh and Mac OS are trademarks of Apple Computer, Inc., registered in the U.S. and other countries. All other trademarks are the property of their respective holders.

Camera functions

Digital zoom

| Quality modes | 2592 × 1944 | 2048 × 1536 | 1600 × 1200 | 640 × 480 |
|---------------|-------------|-------------|-------------|-----------|
| Shooting | – | 1.3 | 1.6 | 4.1 |

Shooting modes

Auto, Manual, Scene Position (Portrait, Landscape, Sports, Night Scene)

Color modes

STANDARD/CHROME/B&W

Movie recording

320×240 pixels: 10 frames/sec., up to 60 sec.
160×120 pixels: 10 frames/sec., up to 180 sec.
With monaural sound, AVI format (Motion JPEG)

Voice memo

Up to 30 sec. WAV format

Playback

Single frame (with max. 16.2× Playback zoom at 5M mode),
9 Multi-frame

Accessories included

16 MB xD-Picture Card™, Li-ion battery NP-40, AC Power Adapter AC-5VW, Hand strap, USB cable, A/V cable, PictureCradle, CD-ROM (FinePixViewer, ImageMixer VCD2 for FinePix)

* Number of effective pixels: The number of pixels on the image sensor which receive input light through the optical lens, and which are effectively reflected in the final output data of the still image.

** Exif 2.2 is a newly revised digital camera file format that contains a variety of shooting information for optimal printing.






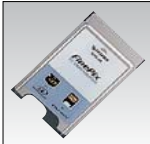


Windows® XP compatible



World standard PictBridge compatible

Specifications are subject to change without notice.

OPTIONAL ACCESSORIES

| | | | |
|---|---|---|---|
|  | xD-Picture Card™ DPC-16 (16MB) DPC-32 (32MB) DPC-64 (64MB) DPC-128 (128MB) DPC-256 (256MB) DPC-512 (512MB) |  | Rechargeable Lithium-ion Battery NP-40 |
|  | Battery Charger BC-65 • Charges in approx. 90 minutes. The NP-40 battery adapter is included. |  | PC Card Adapter DPC-AD |
|  | Image Memory Card Reader DPC-R1 (USB) |  | Soft Case SC-FX455 |
|  | xD-Picture Card™ USB Drive DPC-UD1 | | |

For more information on the full range of Fujifilm digital products, please visit our Website: <http://home.fujifilm.com>



FUJI PHOTO FILM CO., LTD.

26-30, NISHIAZABU 2-CHOME, MINATO-KU, TOKYO 106-8620, JAPAN