




SPECIFICATIONS

FinePix J20 / J250

	<div>FinePix J20</div> <div><div></div><div></div></div> <div>Silver</div> <div>Black</div>	<div>FinePix J250</div> <div></div> <div>Black</div>
Number of effective pixels*	10.0 million pixels	10.0 million pixels
CCD sensor	1/2.3-inch CCD	1/2.3-inch CCD
Storage media	Internal memory (Approx. 20MB) / SD memory card / SDHC memory card*2	Internal memory (Approx. 23MB) / SD memory card / SDHC memory card*2
File format	Still image: JPEG (Exif Ver. 2.2*) / Movie: AVI (Motion JPEG) with sound (Design rule for Camera File system compliant / DPOF-compatible)	Still image: JPEG (Exif Ver. 2.2*) / Movie: AVI (Motion JPEG) with sound (Design rule for Camera File system compliant / DPOF-compatible)
Number of recorded pixels	Still image: 3,648 × 2,736 (10M) / 3,648 × 2,432 (3.2 format) / 2,592 × 1,944 / 2,048 × 1,536 / 1,600 × 1,200 / 640 × 480	Still image: 3,648 × 2,736 (10M) / 3,648 × 2,432 (3.2 format) / 2,592 × 1,944 / 2,048 × 1,536 / 1,600 × 1,200 / 640 × 480
Lens	Fujinon 3× optical zoom lens, F3.1 (Wide) - F5.6 (Telephoto)	Fujinon 5× optical zoom lens, F3.3 (Wide) - F5.1 (Telephoto)
Lens focal length	f=6.3 - 18.9 mm, equivalent to 35.5 - 106.5 mm on a 35 mm camera	f=5.1 - 25.5 mm, equivalent to 28 - 140 mm on a 35 mm camera
Digital zoom	Approx. 5.7×	Approx. 5.7×
Aperture	Wide: F3.1 / F7.8, Telephoto: F5.6 / F14.1	Wide: F3.3 / F5.2, Telephoto: F5.1 / F8.0
Focus distance (from lens surface)	Normal: Wide: Approx. 40 cm / 1.3 ft. to infinity Telephoto: Approx. 40 cm / 1.3 ft. to infinity Macro: Wide: Approx. 10 cm - 80 cm / 3.9 in. - 2.6 ft. Telephoto: Approx. 40 cm - 80 cm / 1.3 ft. - 2.6 ft.	Normal: Wide: Approx. 60 cm / 2.0 ft. to infinity Telephoto: Approx. 1.2 m / 3.9 ft. to infinity Macro: Wide: Approx. 5 cm - 80 cm / 2.0 in. - 2.6 ft. Telephoto: Approx. 70 cm - 1.5 m / 2.3 ft. - 4.9 ft.
Sensitivity	Auto / Equivalent to ISO 100 / 200 / 400 / 800 / 1600 (Standard Output Sensitivity)	Auto / Equivalent to ISO 64 / 100 / 200 / 400 / 800 / 1600 / 3200 (Standard Output Sensitivity) *ISO3200: 3M pixels or lower (Number of recorded pixels)
Shooting modes	Portrait, Landscape, Sport, Night, Fireworks, Sunset, Snow, Beach, Museum, Party, Flower, Text, Baby, PS (Anti-blur), Natural Light, Night (tripod), Movie	Mode dial: Auto, SR Auto, Baby, Red-eye Reduction, Digital Zoom, Portrait, SP, Movie SP: Landscape, Sport, Night, Night (tripod), Natural Light, Beach, Snow, Fireworks, Sunset, Flower, Party, Museum, Text, Manual
Image stabilization	PS (Anti-blur)	CCD-shift type
Shutter speed	(Auto mode) 1/4 sec. to 1/2000 sec. (All other modes) 8 sec. to 1/2000 sec.	(Auto mode) 1/4 sec. to 1/2000 sec. (All other modes) 8 sec. to 1/2000 sec.
Continuous shooting	Top-3 (max. 1.4 frames/sec.)	Top-3 (max. 1.7 frames/sec.)
Focus	Auto focus (Center)	Auto focus (Center)
White balance	Automatic scene recognition Preset: Fine, Shade, Fluorescent light (Daylight), Fluorescent light (Warm white), Fluorescent light (Cool white), Incandescent light	Automatic scene recognition Preset: Fine, Shade, Fluorescent light (Daylight), Fluorescent light (Warm white), Fluorescent light (Cool white), Incandescent light
Self-timer	Approx. 10 sec. / 2 sec. delay	Approx. 10 sec. / 2 sec. delay
Flash	Auto flash Effective range: (ISO AUTO): Normal: Wide: Approx. 50 cm - 3.2 m / 1.6 ft. - 10.5 ft. Telephoto: Approx. 50 cm - 1.8 m / 1.6 ft. - 5.9 ft. Macro: Approx. 30 cm - 80 cm / 1.0 ft. - 2.6 ft.  Flash modes Red-eye removal OFF: Auto, Forced Flash, Suppressed Flash, Slow Synchro. Red-eye removal ON: Red-eye Reduction Auto, Red-eye Reduction & Forced Flash, Suppressed Flash, Red-eye Reduction & Slow Synchro.	Auto flash Effective range: (ISO 400): Normal: Wide: Approx. 60 cm - 3.0 m / 2.0 ft. - 9.8 ft. Telephoto: Approx. 1.2 m - 1.9 m / 3.9 ft. - 6.2 ft. Macro: Wide: Approx. 30 cm - 80 cm / 1.0 ft. - 2.6 ft. Telephoto: Approx. 70 cm - 1.5 m / 2.3 ft. - 4.9 ft.  Flash modes Red-eye removal OFF: Auto, Forced Flash, Suppressed Flash, Slow Synchro. Red-eye removal ON: Red-eye Reduction Auto, Red-eye Reduction & Forced Flash, Suppressed Flash, Red-eye Reduction & Slow Synchro.
LCD monitor	2.7-inch, Approx. 230,000 dots, TFT color LCD monitor, Approx. 97% coverage	3.0-inch, Approx. 230,000 dots, TFT color LCD monitor, Approx. 97% coverage
Photography functions	SR Auto (Scene Recognition Auto), Face Detection (with Auto red-eye removal), Framing guideline, Frame No. memory	SR Auto (Scene Recognition Auto), Face Detection (with Auto red-eye removal), Framing guideline, Frame No. memory
Playback functions	Slide show, Face Detection (with Red-eye removal), Trimming, Single frame and Multi-frame playback (with Micro Thumbnail), Sorting by date, Image rotate	Slide show, Face Detection (with Red-eye removal), Trimming, Single frame and Multi-frame playback (with Micro Thumbnail), Sorting by date, Image rotate
Power supply	NP-45 Li-ion battery (included), CP-45 with AC adapter AC-5VX (sold separately)	NP-45 Li-ion battery (included), CP-45 with AC adapter AC-5VX (sold separately)
Number of available frames for battery operation*4	Approx. 165 frames	Approx. 150 frames
Dimensions	91.0 (W) × 56.0 (H) × 17.4 (D) mm / 3.6 (W) × 2.2 (H) × 0.7 (D) in. (excluding accessories and attachments)	92.0 (W) × 57.9 (H) × 22.6 (D) mm / 3.6 (W) × 2.3 (H) × 0.9 (D) in. (excluding accessories and attachments)
Weight	Approx. 96.5 g / 3.4 oz. (excluding accessories, battery and memory card)	Approx. 151 g / 5.3 oz. (excluding accessories, battery and memory card)
Accessories included	Li-ion battery NP-45, Battery charger BC-45A, Hand strap, CD-ROM: FinePixViewer-S / FinePixViewer, Owner's manual	
Optional accessories	Li-ion battery NP-45, Battery charger BC-45, DC coupler CP-45, A/V cable AV-C1	

Number of images / recording time  
FinePix J20

Mode	Still image								Movie	
Number of recorded pixels	3,648 × 2,736	3,648 × 2,432 (3:2)	2,592 × 1,944	2,048 × 1,536	1,600 × 1,200	640 × 480			Movie recording time	
Quality	JPEG FINE	JPEG NORMAL	JPEG	JPEG	JPEG	JPEG	VGA (30 fps)	QVGA (30 fps)		
Internal memory (approx. 20MB)	3	7	8	13	19	26	90	13 sec.	31 sec.	
SD memory card	512MB	95	190	210	350	480	640	2,220	6 min.	12 min.
	1GB	190	380	420	700	960	1,280	4,420	12 min.	28 min.
	2GB	390	760	860	1,400	1,930	2,580	8,850	25 min.	57 min.
SDHC memory card	4GB	790	1,520	1,720	2,810	3,870	5,160	17,720	50 min.*	116 min.*
	8GB	1,590	3,060	3,450	5,650	7,780	10,370	35,560	100 min.*	229 min.*

FinePix J250

Mode	Still image								Movie	
Number of recorded pixels	3,648 × 2,736	3,648 × 2,432 (3:2)	2,592 × 1,944	2,048 × 1,536	1,600 × 1,200	640 × 480			Movie recording time	
Quality	JPEG FINE	JPEG NORMAL	JPEG	JPEG	JPEG	JPEG	VGA (30 fps)	QVGA (30 fps)		
Internal memory (approx. 23MB)	4	8	9	17	28	35	147	28 sec.	51 sec.	
SD memory card	512MB	95	190	220	380	600	750	3,090	9 min.	17 min.
	1GB	200	390	440	770	1,210	1,510	6,190	19 min.	35 min.
	2GB	400	790	880	1,540	2,380	2,950	12,400	39 min.	71 min.
SDHC memory card	4GB	800	1,590	1,770	3,100	4,770	5,900	24,820	79 min.*	143 min.*
	8GB	1,610	3,190	3,550	6,220	9,570	11,850	49,800	160 min.*	288 min.*

\*1: Number of effective pixels: The number of pixels on the image sensor which receive input light through the optical lens, and which are effectively reflected in the final output data of the still image.  
\*2: Please see the Fujifilm website to check memory card compatibility.  
\*3: Exif 2.2 is a digital camera file format that contains a variety of shooting information for optimal printing.  
\*4: According to "CIPA DC-002-2003 Standard Procedure for Measuring Digital Still Camera Battery Consumption" (extract) Pictures shall be taken at a temperature of 23°C, with the LCD monitor turned on, the zoom moved from full wide-angle to full telephoto (or vice-versa) and back again to its original position every 30 seconds, the flash used at full power every second shot and the camera turned off and then on again once every 10 shots. The battery (NP-45) is supplied with the camera.

Microsoft, Windows and Windows logo are trademarks, or registered trademarks of Microsoft Corporation in the United States and/or other countries. Macintosh and Mac OS are trademarks of Apple Computer, Inc., registered in the U.S. and other countries. SD logo is a trademark. All other trademarks are the property of their respective holders.



FUJIFILM Corporation

FUJIFILM FINEPIX J20/J250

NEW

Compact Stylish Performer



FINEPIX J20

From Wide-Angle Shots to Close-Ups, One Camera Does It All



FINEPIX J250

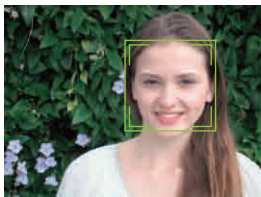
FinePix . More than you imagined.

# The FinePix J Series: Featuring SR AUTO & Face Detection

## Scene Recognition Auto



### Portrait



FinePix J20/J250 in SR AUTO

SR Auto recognizes portraits, finding faces quickly and then focusing and optimizing exposure to produce perfect portraits with bright, beautiful detail.



### Landscape

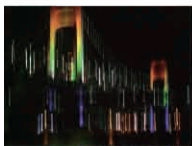


FinePix J20/J250 in SR AUTO

When SR Auto detects a landscape, it automatically optimizes for maximum sharpness and depth of field. From cityscapes to nature, landscapes are captured in beautiful, high-resolution color and smooth tonality, just as the human eye sees them.



### Night



Conventional digital camera in Auto mode



FinePix J20/J250 in SR AUTO

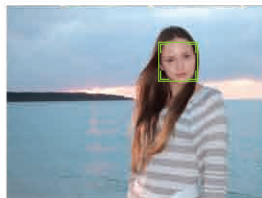
For low-light and nighttime scenarios, SR Auto automatically adjusts shutter speed and sensitivity, producing blur-free pictures with minimal noise, even at high sensitivity.



### Backlit Portrait



Conventional digital camera in Auto mode



FinePix J20/J250 in SR AUTO

When photographing people against the sun or other strong backlight, SR Auto automatically optimizes the exposure and flash to ensure clear, evenly lit facial features.



### Macro



Conventional digital camera in Auto mode



FinePix J20/J250 in SR AUTO

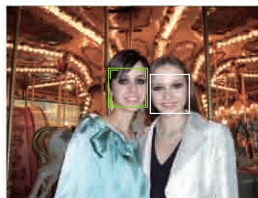
When your subject is closer than normal, SR Auto automatically adjusts the Fujinon lens optics and aperture for a shallow depth of field, producing high-resolution close-ups with crisp clarity.



### Night Portrait



Conventional digital camera in Auto mode



FinePix J20/J250 in SR AUTO

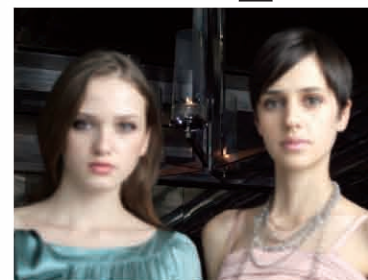
When photographing people at night or in low light, SR Auto optimizes flash range, shutter speed and exposure to give you attractive, properly exposed portraits.



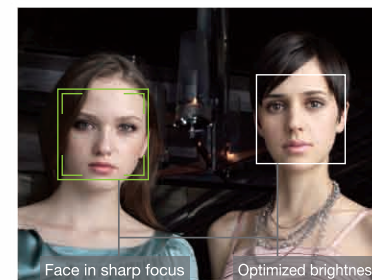
## Face Detection with Auto Red-Eye Removal

Face Detection identifies faces in the frame and optimizes focus and exposure, making it easy to take flattering portraits. Auto red-eye removal identifies and compensates for red-eye in detected faces for foolproof flash-lit portraits and party pictures.

### Face Detection

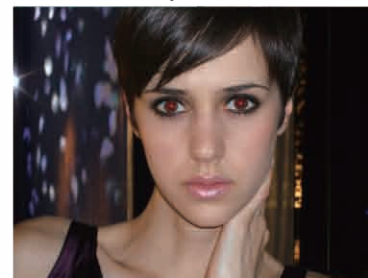


Lost photo opportunity

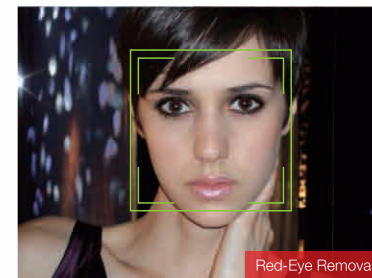


FinePix J20/J250

### Auto Red-Eye Removal



Lost photo opportunity



FinePix J20/J250

Simple & Stylish

P.03-04



FINEPIX J20

Wide-Angle, 5x Zoom

P.05-06



FINEPIX J250

FINEPIX J20/J250





Slim Styling Goes Everywhere

## FINEPIX J20



Silver



Black

### 1 17.4mm Slim Profile

Stylish lines and a slim profile make the FinePix J20 models a perfect companion, slipping effortlessly into your purse or pocket and always there, whenever you want to capture the moment.



### 2 10.0 Megapixels & High Sensitivity ISO1600

10.0 megapixels of resolution produces impressive, crisp, clear pictures, perfect for cropping or enlarging as you like. Maximum sensitivity of ISO1600 ensures great blur-free photos in various conditions.

### 3 3x Optical Zoom

The sharp, high-quality Fujinon lens features a 3x optical zoom, providing added flexibility for close-ups and expanding the fun of photos.



Wide angle



3x optical zoom

### 4 Picture Stabilization / Anti-blur Mode

This mode corrects for camera shake and subject blur, making it easy to capture sharp, clear stop-action photos with excellent background detail.



Conventional digital camera



FinePix J20

### 5 Large 2.7-inch LCD with Micro Thumbnail View

The large, bright 2.7-inch LCD adds impact to photo viewing. Display your photos one, two, or nine frames at a time or navigate your photo library with a simultaneous display of 100 shots in Micro Thumbnail View.







28mm Wide Angle & Large, Bright LCD

**FINEPIX J250**



## 1 28mm Wide Angle + 5x Optical Zoom: True All-Round Performance

For group portraits, expansive landscapes, and architectural scenes, the 28mm wide-angle setting creates impressive pictures with powerful depth and scale. At the other end of the focal range, the 5x optical zoom lets you move in at the touch of a button, capturing dramatic details and subtle expressions, even from a distance.



Lost photo opportunity



28mm wide angle



Wide angle



3x optical zoom



5x optical zoom

## 2 10.0 Megapixels & High Sensitivity ISO3200\*

10.0 megapixels of resolution produces impressive, crisp, clear pictures, perfect for cropping or enlarging as you like, while maximum sensitivity of ISO3200 lets you shoot natural-looking pictures without flash in various lighting conditions.

\*At ISO 3200, number of recorded pixels is limited to 3 megapixels.

## 3 Dual Image Stabilization (Ⓜ)

The combination of high sensitivity and CCD shift image stabilization works to eliminate blurred photos by freezing action and minimizing the effects of camera shake.



Conventional digital camera



FinePix J250

## 4 Large 3.0-inch LCD with Micro Thumbnail View

View photos on a large, bright 3.0-inch LCD. Photos can be displayed one, two, or nine frames at a time, while the convenient Micro Thumbnail View lets you navigate your photo library with a simultaneous display of 100 shots.

