

**SPECIFICATIONS**

FinePix Z33WP	
Number of effective pixels*	10.0 million pixels
CCD sensor	1/2.3-inch CCD
Storage media	Internal memory (Approx. 50MB) SD memory card/SDHC memory card**
File format	Still image: JPEG (Exif Ver.2.2)** Movie: AVI (Motion JPEG) with sound / Audio: WAVE format, Monoaural sound (Design rule for Camera File system compliant / DPOF-compatible)
Number of recorded pixels	Still image: 3,648 x 2,736 (10M) / 3,648 x 2,432 (3:2 format) / 2,592 x 1,944 / 2,048 x 1,536 / 1,600 x 1,200 / 640 x 480
Lens	Fujinon 3x optical zoom lens, F3.7 (Wide) - F4.2 (Telephoto)
Lens focal length	F= 6.3 - 18.9mm, equivalent to 35 - 105mm on a 35mm camera
Digital zoom	Approx. 5.7x
Aperture	Wide: F3.7 - F8.0, Telephoto: F4.2 - F9.0
Focus distance (from lens surface)	Normal: Wide: Approx. 60cm / 2.0 ft. to infinity, Telephoto: Approx. 60cm / 2.0ft. to infinity Macro: Wide: Approx. 8cm - 80cm / 3.2 in. - 2.6ft., Telephoto: Approx. 60cm - 3m / 2.0ft. - 9.8ft.
Sensitivity	Auto / Equivalent to ISO 64 / 100 / 200 / 400 / 800 / 1600(Standard Output Sensitivity)
Exposure control	TTL 256-zones metering
Exposure mode	Programmed AE
Shooting modes	SR Auto, Auto, Natural Light, Natural Light & with Flash, Manual, Anti-blur, Successive movie SP : Underwater, Auction, Portrait, Landscape, Sport, Night, Night(Tripod), Sunset, Snow, Beach, Museum, Party, Flower, Text
Shutter speed	(Auto mode) 1/4 sec. to 1/1000 sec., (All other modes) 3 sec. to 1/1000 sec.
Continuous shooting	Top-3 (max. 0.6 frames/sec.) Final-3 (max. 0.6 frames/sec.) Long-period
Focus	Auto focus (Multi, Center)
White balance	Automatic scene recognition Preset: Fine, Shade, Fluorescent light (Daylight), Fluorescent light (Warm White), Fluorescent light (Cool White), Incandescent light
Self-timer	Approx. 10 sec./2 sec. delay, Couple Timer, Group Timer
Flash	Auto flash Effective range: (ISO AUTO): Normal Wide: Approx. 70cm - 3.9m / 2.3 ft. - 12.7 ft. Telephoto: Approx. 70cm - 3.4m / 2.3ft. - 11.1 ft. Macro: Approx. 30cm - 80cm / 1.0 ft. - 2.6 ft. Flash modes Red-eye removal OFF: Auto, Forced Flash, Suppressed Flash, Slow Synchro. Red-eye removal ON: Red-eye Reduction Auto, Red-eye Reduction & Forced Flash, Suppressed Flash, Red-eye Reduction & Slow Synchro.
LCD monitor	2.7-inch, Approx. 230,000 dots, TFT color LCD monitor, Approx. 97% coverage
Movie recording	640 x 480 pixels / 320 x 240 pixels (30 frames/sec.) with monoaural sound *Digital zoom function can be selected during movie recording.
Photography functions	SR Auto (Scene Recognition Auto), Face Detection (with Auto red-eye removal), Framing guideline, Frame No. memory, Silent mode
Playback functions	Face Detection (with Red-eye removal), Slide show, Trimming, Trimming for blog, Playback type, Multi-frame playback (with Micro Thumbnail), Sorting by date, Image rotate, Voice memo
Waterproof / Dustproof	IP68 compliant
Video output	NTSC/PAL selectable
Digital interface	USB 2.0 High-speed
Power supply	NP-45 Li-ion battery (included)
Dimensions	92.0 (W) x 59.6 (H) x 20.6 (D) mm / 3.6 (W) x 2.3 (H) x 0.8 (D) in. (excluding accessories and attachments)
Weight	Approx. 110g / 3.9 oz. (excluding accessories, battery and memory card)

Number of images / recording time		Still image						Movie		
Mode	Quality	JPEG FINE	JPEG NORMAL	JPEG	JPEG	JPEG	VGA (30fps)	QVGA (30fps)	QVGA (15fps)	
Number of recorded pixels		3,648x2,736	3,648x2,432	2,592x1,944	2,048x1,536	1,600x1,200	640x480			
Internal memory (approx. 50MB)		10	20	23	40	62	78	321	56 sec. 1 min. 29sec.	
SD memory card		100	190	220	380	600	750	3090	9 min. 14 min.	
1GB		200	390	440	770	1210	1510	6190	18 min. 28 min.	
2GB		400	790	900	1550	2390	2960	12430	35 min. 57 min.	
SDHC memory card		4GB	800	1590	1790	3100	4770	3900	24820	71 min. 114 min.
8GB		1610	3190	3600	6220	9570	11850	49800	143 min. 230 min.	

\*1: Number of effective pixels: The number of pixels on the image sensor which receive input light through the optical lens, and which are effectively reflected in the final output data of the still image.  
\*2: Please see the Fujifilm website to check memory card compatibility.  
\*3: Exif 2.2 is a digital camera file format that contains a variety of shooting information for optimal printing.  
\*4: \*CPA DC-002-2003 Standard Procedure for Measuring Digital Still Camera Battery Consumption" (extract) Pictures shall be taken at a temperature of 23°C, with the LCD monitor turned on, the zoom moved from full wide-angle to full telephoto (or vice-versa) and back again to its original position every 30 seconds, the flash used at full power every second shot and the camera turned off and then on again once every 10 shots.

Microsoft, Windows and Windows logo are trademarks, or registered trademarks of Microsoft Corporation in the United States and/or other countries. Macintosh and Mac OS are trademarks of Apple Computer, Inc., registered in the U.S. and other countries. SD logo is a trademark. All other trademarks are the property of their respective holders.  
For more information, please visit our Website: [http://www.fujifilm.com/products/digital\\_cameras/index.html](http://www.fujifilm.com/products/digital_cameras/index.html)



**COLOR VARIATIONS**



**OPTIONAL ACCESSORIES**

- Li-ion battery NP-45
- Silicone jacket SJ-FXZ33
- Float strap FS-FXZ33
- Battery charger BC-45
- A/V cable AV-C1

**ACCESSORIES INCLUDED**

- ?Li-ion battery NP-45
- ?Battery charger BC-45W
- ?Hand strap
- ?USB cable for the FinePix Z33WP
- ?CD-ROM: FinePixViewer
- ?Owner's manual

Guide to the number of available frames for battery operation		
Battery	LCD monitor status	Number of frames
NP-45	LCD monitor ON	Approx. 200 frames



Specifications are subject to change without notice.

# Scene Recognition Auto



Never lose another priceless moment fumbling with modes and settings! SR Auto recognizes 6 different scene types, automatically selects the ideal mode, and instantly fine tunes exposure, focus, sensitivity and white balance for stunning clarity and vivid color. Capture natural skin tones in portraits, clear night shots, detailed landscapes and amazing macro photos. Even taking difficult night or backlit portrait scenes, the quality is exceptional.

 <b>Portrait</b> 	 <b>Macro</b> 
 <b>Night</b> 	 <b>Landscape</b> 
 <b>Night Portrait</b> 	 <b>Backlit Portrait</b> 

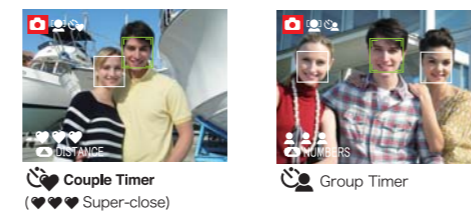
## Face Detection with Auto Red-eye Removal

Face Detection automatically and accurately finds and focuses faces, optimizes brightness and corrects "red eye" for perfect portraits every time!



## "Smart" Self-Timer Functions

Thanks to the power of built-in Face Detection, the new self timer only snaps the photo when the selected number, position and distance of faces are detected, with all the faces in focus and properly exposed. With Couple Timer, just select "Near", "Close-up" or "Super-close" for your desired level of intimacy. For group photos, choose Group Timer and select auto detection for up to 4 faces.

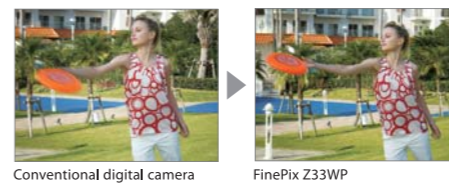


## 10 Megapixels & 3x Optical Zoom

Zoom in on the action for dynamic close-ups. With 10-megapixel resolution, you can crop and enlarge, and still enjoy exceptional detail and clarity.

## ISO1600 & Anti-Blur Mode

FinePix renowned high sensitivity not only captures exceptional pictures in dark scenes, but also prevents blur from camera shake and moving subjects by letting you use a fast shutter speed.

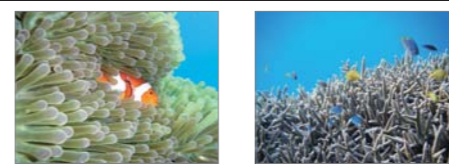


## Successive Movie Function

The story goes on with Successive movie function. Just select a previously recorded movie file and "resume" shooting to complete a movie up to 60 seconds long.

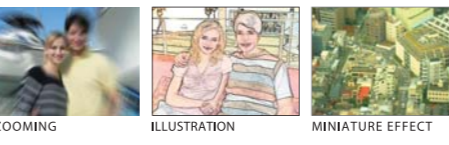
## Underwater Mode

Just select Underwater Mode and every setting from exposure to white balance is optimized for stunning underwater photos. You can also capture the underwater wonder as a movie with just a touch of a button.



## Blog Mode with 12 Editing Functions

Add an artistic dimension to any recorded image in your camera from a dozen special effects. For example, transform any subject into an illustration or a painting. Zoom in on part of the scene. Make the subject look like a miniature model. Edited image is set to VGA (640 x 480 pixels) or QVGA (320 x 240 pixels) size to upload on your blog without fuss.



## 2.7" LCD & Micro Thumbnail View

Navigate your collection and find photos in an instant on the large 2.7" LCD and the handy 10 x 10 thumbnail array.



## Optional Accessories

- Silicone Jacket**  
Protect your Z33WP from scratches and improve grip with this non-slip soft silicone skin.
- Float Strap**  
The high-visibility strap keeps your camera handy and afloat if it ever escapes your grip in the water.



# FUJIFILM FINEPIX Z33WP NEW



10Megapixels SR AUTO (Scene Recognition Auto) 3m Waterproof

FinePix. More than you imagined.

\*Among waterproof digital cameras with 3x optical zoom and 10 mega+ pixels; as of December 2008, Fujifilm research.



Get pix at the beach!

Shoot in rain or snow!

Capture nature "live".

Ready to get wild in the outdoors!

Snap a splash at poolside!

# Anytime, anywhere, even 3m underwater.

